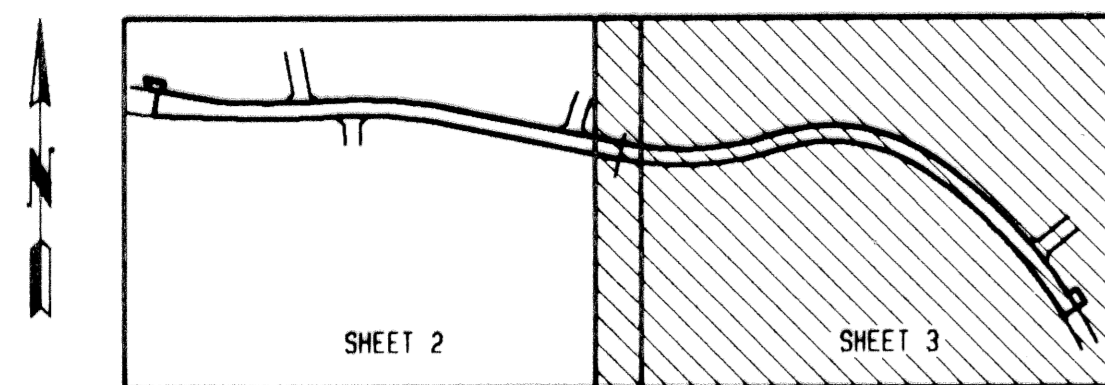


# WOODFIELD CIRCLE PLAT THREE

IN PART OF SECTION 4, TOWNSHIP 47 SOUTH, RANGE 42 EAST  
CITY OF BOCA RATON, PALM BEACH COUNTY, FLORIDA  
SHEET NO. 3 OF 3

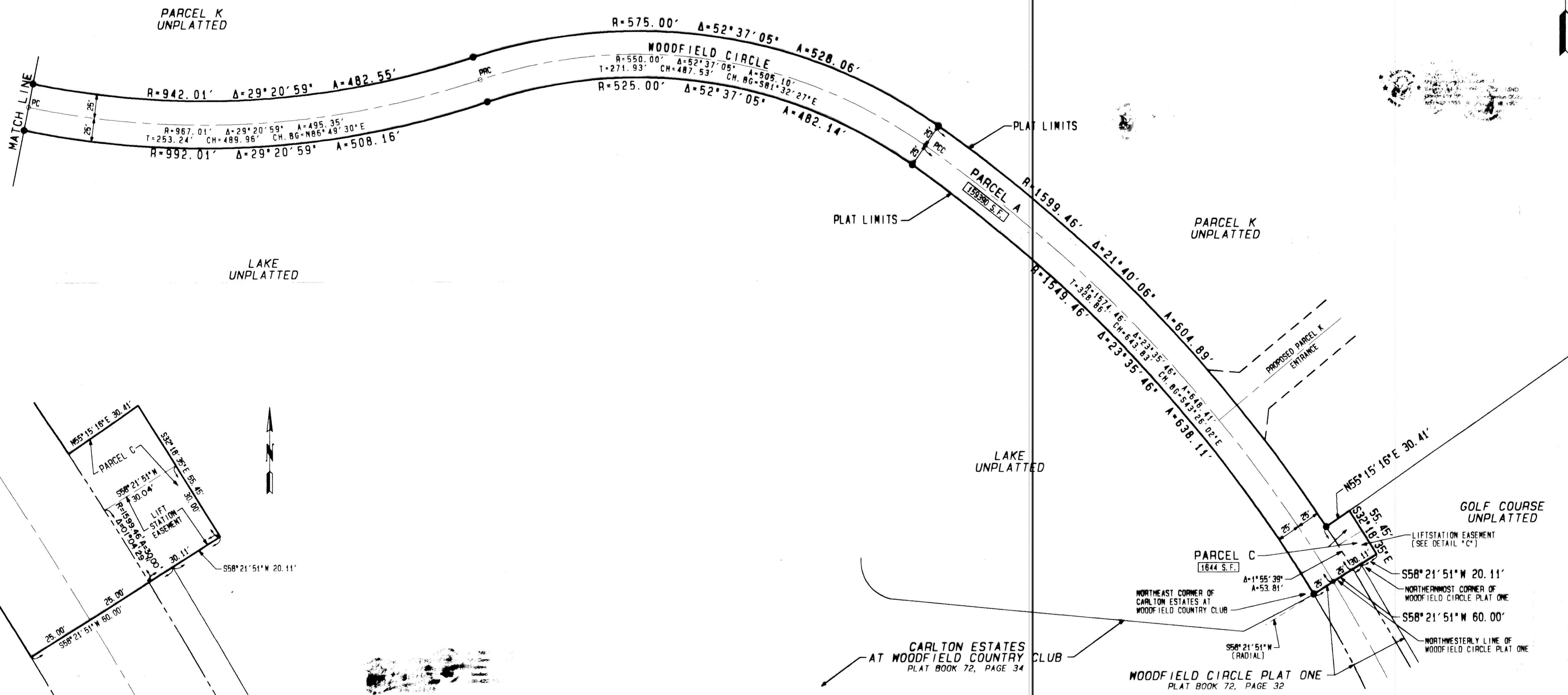
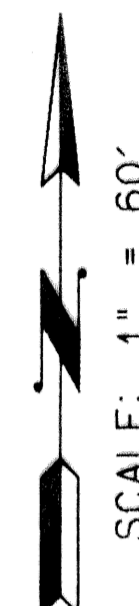
GEE & JENSON  
ENGINEERS - ARCHITECTS - PLANNERS, INC.  
WEST PALM BEACH, FLORIDA  
JANUARY 1994  
SCALE IN FEET SCALE 1" = 60'



KEY MAP  
NOT TO SCALE

# 197

STATE OF FLORIDA  
COUNTY OF PALM BEACH  
This plat was filed for  
record at \_\_\_\_\_ M this day  
of \_\_\_\_\_ 1994, and duly  
recorded in Plat Book No. \_\_\_\_\_  
on Pages \_\_\_\_\_ thru \_\_\_\_\_  
By \_\_\_\_\_ D. C.  
DOROTHY WILKEN  
Clerk Circuit Court



SUBDIVISION - Woodfield Circle Plat 3  
BOOK 72 PAGE 197  
FLOOD ZONE - FLOOD HAZARD ZONE  
CIVIL ENGINEER - [Signature]  
PUD NAME - Boca

COMPUTED D. BACHOR  
DRAWN D. BACHOR  
CHECKED \_\_\_\_\_  
APPROVED \_\_\_\_\_  
JOB NO. 93-330

DETAIL "C"  
SCALE: 1" = 20'