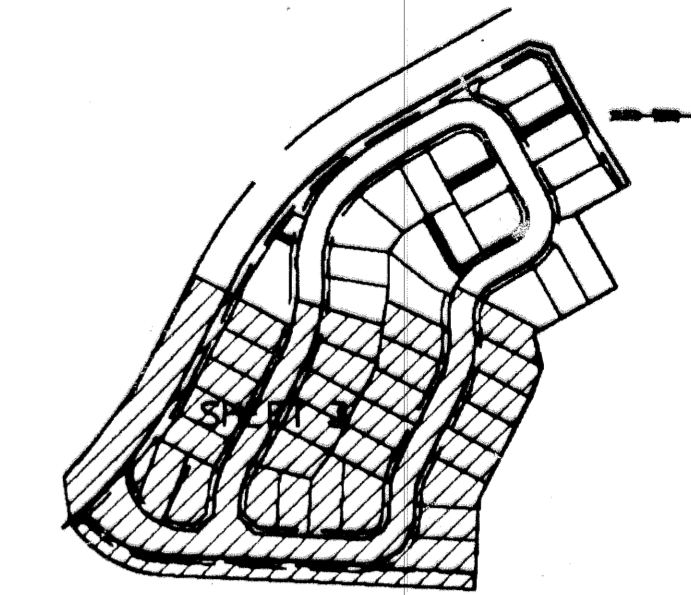
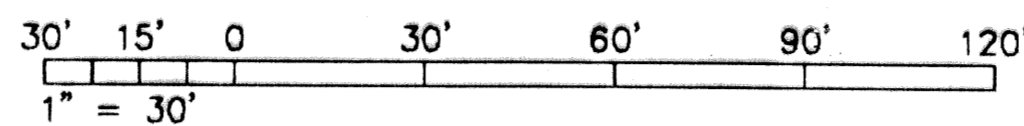


PLAT OF NORMANDY VILLAGE

BEING A REPLAT OF A PORTION OF TRACT "Q-2" OF THE REPLAT
 OF TRACTS "Q-1" AND "BBB-1", REPLAT OF TRACTS "CCC",
 "AAA" AND A PORTION OF TRACT "BB" RECORDED IN PLAT BOOK 47 PAGE 181
 IN SECTION 16, TOWNSHIP 43 SOUTH, RANGE 43 EAST IN THE CITY OF WEST PALM BEACH,
 PALM BEACH COUNTY, FLORIDA
APRIL 1994 SHEET 3 OF 3



200

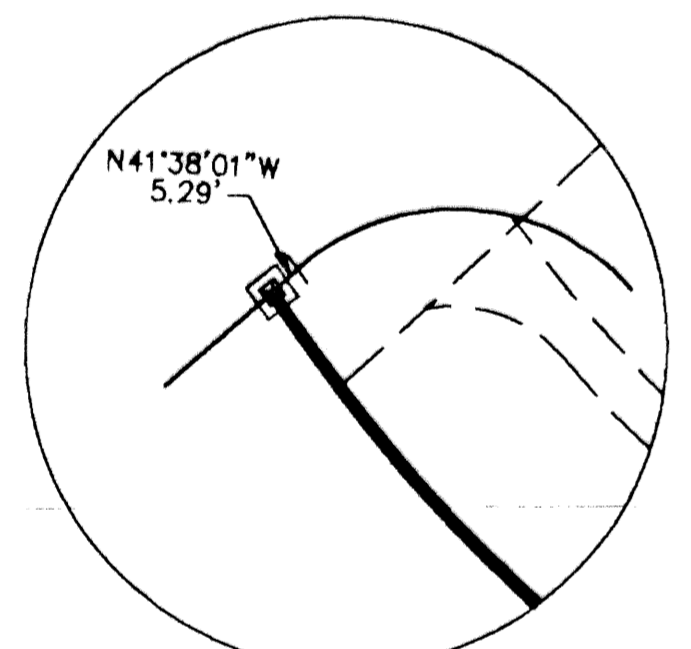
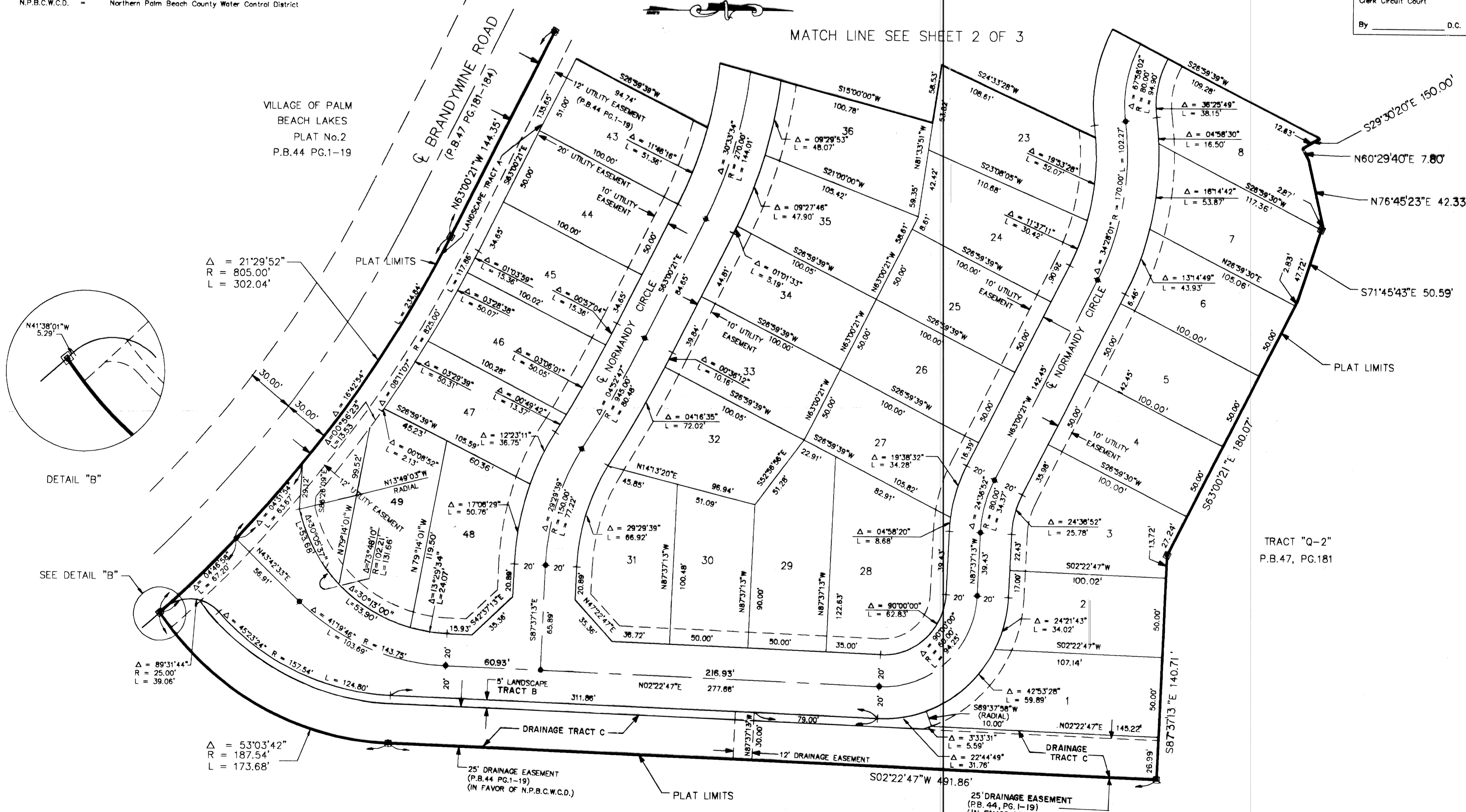
STATE OF FLORIDA
 COUNTY OF PALM BEACH
 This plat was filed for
 record at ___ M. this day ___
 of 1994, and duly
 recorded in Plat Book No. ___
 on Pages ___ thru ___.

DOROTHY WILKEN
 Clerk Circuit Court

By _____ D.C.

- LEGEND**
- P.O.B. = Point of Beginning
 - P.O.C. = Point of Commencement
 - R = Radius
 - Δ = Delta
 - L = Arc Length
 - = Set Permanent Reference Monument (4x4 Concrete Monument) #4659
 - = Permanent Control Point
 - P.B. = Plat Book
 - PG. = Page
 - ⊕ = Centerline
 - N.P.B.C.W.C.D. = Northern Palm Beach County Water Control District

MATCH LINE SEE SHEET 2 OF 3



SUBVISION Normandy Village
 BLOCK 72 PAGE 200
 FLOOR PLAN
 4/23/94
 2:15pm
 CLEAR

C:02-PL3
 COMPUTED
 DRAWN
 CHECKED
 APPROVED
 JOB NO. 93-374

This instrument was prepared by:
ALLAN FRANK OSLUND P.L.L.C.
 Gee & Jensen, Engineers, Architects, Planners, Inc.
 One Harvard Circle
 West Palm Beach, Florida 33409-1923