

RICKIE C. WEINBERG  
**CARMAN-PROCTOR AND ASSOCIATES, INC.**  
 CONSULTING ENGINEERS  
 SURVEYORS ENGINEERS PLANNERS  
 6191 WEST ATLANTIC BLVD., MARGATE, FLORIDA 33063  
 NOVEMBER 1993 8706062B JSH

BOCA GREENS (WEST PHASE) P.U.D.

208-020 JUL-21-1994 11:02am 94-249603

10

# BOCA ISLES SOUTH PHASE 5B

A PORTION OF SECTION 12, TOWNSHIP 47 SOUTH, RANGE 41 EAST AND A REPLAT OF PORTIONS OF TRACTS 17 AND 18, SECTION 13, TOWNSHIP 47 SOUTH, RANGE 41 EAST, "FLORIDA FRUIT LANDS COMPANY'S SUBDIVISION NO. 2", (P.B. 1, PG. 102, P.B.C.R.) AND A PORTION OF THE ABANDONED 15.00 FOOT WIDE ROAD RIGHT-OF-WAY (O.R.B. 8328, PGS. 1295-1324, P.B.C.R.)

## PALM BEACH COUNTY, FLORIDA

### DESCRIPTION, DEDICATION AND RESERVATION

KNOW ALL MEN BY THESE PRESENTS THAT BOCA GREENS INC., A FLORIDA CORPORATION, OWNER OF THE LANDS SHOWN HEREON, BEING A PORTION OF SECTION 12, TOWNSHIP 47 SOUTH, RANGE 41 EAST, AND A REPLAT OF PORTIONS OF TRACTS 17 AND 18 IN SECTION 13, TOWNSHIP 47 SOUTH, RANGE 41 EAST, "FLORIDA FRUIT LANDS COMPANY'S SUBDIVISION NO. 2", AS RECORDED IN PLAT BOOK 1 AT PAGE 102 OF THE PUBLIC RECORDS OF PALM BEACH COUNTY, FLORIDA, AND A PORTION OF THE 15.00 FOOT ABANDONED ROAD RIGHT-OF-WAY AS RECORDED IN OFFICIAL RECORDS BOOK 8328 AT PAGES 1295-1324 OF THE PUBLIC RECORDS OF PALM BEACH COUNTY, FLORIDA, BEING SHOWN HEREON AS "BOCA ISLES WEST PHASE 5B", A REPLAT, BEING MORE PARTICULARLY DESCRIBED AS FOLLOWS:

COMMENCING AT THE SOUTHEAST CORNER OF SAID SECTION 12; THENCE SOUTH 89°46'57" WEST, ALONG THE SOUTHERLY LINE OF SAID SECTION 12, A DISTANCE OF 2855.98 FEET TO THE POINT OF BEGINNING, SAID POINT ALSO LYING ON THE WESTERLY LINE OF AN 80.00 FOOT ROAD RIGHT-OF-WAY (KNOWN AS "CAIN BOULEVARD") AS RECORDED IN OFFICIAL RECORD BOOK 6370 AT PAGE 1418, OF SAID PUBLIC RECORDS OF PALM BEACH COUNTY, FLORIDA; THENCE SOUTH 08°47'28" EAST, ALONG SAID WESTERLY LINE, A DISTANCE OF 343.71 FEET; THENCE SOUTH 81°12'32" WEST, A DISTANCE OF 50.00 FEET; THENCE NORTH 06°23'06" WEST, A DISTANCE OF 49.26 FEET; THENCE NORTH 32°17'27" WEST, A DISTANCE OF 123.14 FEET; THENCE NORTH 61°11'40" WEST, A DISTANCE OF 123.80 FEET; THENCE SOUTH 89°14'52" WEST, A DISTANCE OF 264.95 FEET; THENCE NORTH 64°37'21" WEST, A DISTANCE OF 66.40 FEET; THENCE NORTH 48°01'54" WEST, A DISTANCE OF 80.20 FEET; THENCE SOUTH 41°58'06" WEST, A DISTANCE OF 110.00 FEET; THENCE NORTH 06°58'06" WEST, A DISTANCE OF 32.84 FEET; THENCE NORTH 55°54'19" WEST, ALONG A BEARING RADIAL TO THE NEXT DESCRIBED CURVE, A DISTANCE OF 80.00 FEET TO A POINT LYING ON THE ARC OF A CIRCULAR CURVE TO THE RIGHT; THENCE SOUTHWESTERLY, ALONG THE ARC OF SAID CURVE, HAVING A RADIUS OF 260.00 FEET AND A CENTRAL ANGLE OF 27°10'33", A DISTANCE OF 123.32 FEET TO THE POINT OF TANGENCY; THENCE SOUTH 61°16'15" WEST, A DISTANCE OF 84.65 FEET; THENCE NORTH 28°43'45" WEST, A DISTANCE OF 112.13 FEET TO A POINT LYING ON THE ARC OF A NON-TANGENT CIRCULAR CURVE TO THE LEFT AT WHICH THE RADIUS BEARS SOUTH 56°51'21" WEST; THENCE NORTHWESTERLY AND WESTERLY, ALONG THE ARC OF SAID CURVE, HAVING A RADIUS OF 337.00 FEET AND A CENTRAL ANGLE OF 49°24'55", A DISTANCE OF 290.65 FEET TO A POINT LYING ON A NON-TANGENT LINE; THENCE NORTH 88°48'17" WEST, ALONG SAID NON-TANGENT LINE, A DISTANCE OF 175.25 FEET; THENCE NORTH 05°48'17" WEST, A DISTANCE OF 90.68 FEET; THENCE NORTH 04°06'43" WEST, A DISTANCE OF 80.24 FEET; THENCE NORTH 09°39'20" WEST, A DISTANCE OF 82.06 FEET TO A POINT LYING ON THE ARC OF A NON-TANGENT CIRCULAR CURVE TO THE LEFT AT WHICH THE RADIUS BEARS SOUTH 74°10'27" WEST; THENCE NORTHWESTERLY ALONG THE ARC OF SAID CURVE, HAVING A RADIUS OF 337.00 FEET AND A CENTRAL ANGLE OF 38°35'29", A DISTANCE OF 226.99 FEET TO A POINT LYING ON A NON-RADIAL LINE; THENCE NORTH 40°03'05" EAST, ALONG A LINE NON-RADIAL TO THE LAST DESCRIBED CURVE, ALSO BEING RADIAL TO THE NEXT DESCRIBED CURVE, A DISTANCE OF 346.59 FEET TO A POINT LYING ON THE ARC OF A CIRCULAR CURVE TO THE LEFT; THENCE SOUTHEASTERLY ALONG THE ARC OF SAID CURVE, HAVING A RADIUS OF 493.00 FEET AND A CENTRAL ANGLE OF 09°09'49", A DISTANCE OF 78.85 FEET TO THE POINT OF TANGENCY; THENCE SOUTH 59°06'44" EAST, A DISTANCE OF 37.70 FEET TO THE POINT OF CURVATURE OF A CIRCULAR CURVE TO THE LEFT; THENCE EASTERLY ALONG THE ARC OF SAID CURVE, HAVING A RADIUS OF 375.00 FEET AND A CENTRAL ANGLE OF 54°13'23", A DISTANCE OF 354.89 FEET TO A POINT LYING ON A RADIAL LINE; THENCE SOUTH 23°20'07" EAST, ALONG SAID RADIAL LINE, A DISTANCE OF 50.00 FEET; THENCE SOUTH 25°49'02" WEST, A DISTANCE OF 32.70 FEET; THENCE SOUTH 15°01'48" EAST, A DISTANCE OF 100.87 FEET; THENCE NORTH 61°52'16" EAST, A DISTANCE OF 38.83 FEET; THENCE NORTH 55°30'48" EAST, A DISTANCE OF 91.20 FEET; THENCE NORTH 59°55'56" EAST, A DISTANCE OF 130.40 FEET; THENCE SOUTH 24°05'46" EAST, A DISTANCE OF 52.15 FEET; THENCE SOUTH 18°01'26" EAST, A DISTANCE OF 64.65 FEET; THENCE SOUTH 14°20'04" EAST, A DISTANCE OF 64.61 FEET; THENCE SOUTH 10°36'45" EAST, A DISTANCE OF 64.61 FEET; THENCE SOUTH 14°21'45" WEST, A DISTANCE OF 68.46 FEET; THENCE SOUTH 01°23'11" WEST, A DISTANCE OF 65.61 FEET TO THE POINT OF CURVATURE OF A CIRCULAR CURVE TO THE LEFT; THENCE SOUTHERLY, EASTERLY, AND NORTHERLY ALONG THE ARC OF SAID CURVE, HAVING A RADIUS OF 170.10 FEET AND A CENTRAL ANGLE OF 190°10'39", A DISTANCE OF 564.60 FEET TO A POINT LYING ON A RADIAL LINE; THENCE NORTH 81°12'32" EAST, ALONG SAID RADIAL LINE, A DISTANCE OF 41.63 FEET; THENCE NORTH 05°33'30" WEST, A DISTANCE OF 92.42 FEET TO A POINT LYING ON THE ARC OF A NON-TANGENT CIRCULAR CURVE TO THE RIGHT, AT WHICH THE RADIUS BEARS SOUTH 78°38'41" WEST, ALSO BEING THE WESTERLY BOUNDARY OF SAID "CAIN BOULEVARD"; THENCE SOUTHERLY ALONG THE ARC OF SAID CURVE, ALSO BEING SAID WESTERLY BOUNDARY, HAVING A RADIUS OF 1830.00 FEET AND A CENTRAL ANGLE OF 02°33'51", A DISTANCE OF 81.90 FEET TO THE POINT OF TANGENCY; THENCE SOUTH 08°47'28" EAST, ALONG SAID WESTERLY BOUNDARY, A DISTANCE OF 366.12 FEET TO THE POINT OF BEGINNING.

SAID LANDS SITUATE IN PALM BEACH COUNTY, FLORIDA AND CONTAIN 18.872 ACRES, MORE OR LESS.  
 HAS CAUSED THE SAME TO BE SURVEYED AND PLATTED AS SHOWN HEREON, AND DOES HEREBY DEDICATE AND RESERVE AS FOLLOWS:

- TRACT "A", AS SHOWN HEREON, IS HEREBY RESERVED FOR THE BOCA ISLES SOUTH PROPERTY OWNERS ASSOCIATION, INC., ITS SUCCESSORS AND ASSIGNS, FOR PRIVATE STREET PURPOSES AND OTHER PURPOSES NOT INCONSISTENT WITH THIS RESERVATION AND IS THE PERPETUAL MAINTENANCE OBLIGATION OF SAID ASSOCIATION, ITS SUCCESSORS AND ASSIGNS, WITHOUT RECOURSE TO PALM BEACH COUNTY.
- TRACT "B", AS SHOWN HEREON, IS HEREBY RESERVED FOR THE BOCA ISLES SOUTH PROPERTY OWNERS ASSOCIATION, INC., ITS SUCCESSORS AND ASSIGNS, FOR STORMWATER MANAGEMENT AND DRAINAGE PURPOSES AND IS THE PERPETUAL MAINTENANCE OBLIGATION OF SAID ASSOCIATION, ITS SUCCESSORS AND ASSIGNS, WITHOUT RECOURSE TO PALM BEACH COUNTY.
- TRACT "C", AS SHOWN HEREON IS HEREBY RESERVED FOR THE PERPETUAL USE OF THE RESIDENTS OF THE DEVELOPMENT AS DEFINED IN THE DECLARATION OF RESTRICTIONS RECORDED IN OFFICIAL RECORDS BOOK 8328 AT PAGE 102 OF THE PUBLIC RECORDS OF PALM BEACH COUNTY, FLORIDA, FOR RECREATION PURPOSES AND IS THE PERPETUAL MAINTENANCE OBLIGATION OF THE BOCA ISLES CLUB SOUTH, INC., ITS SUCCESSORS AND ASSIGNS, WITHOUT RECOURSE TO PALM BEACH COUNTY.
- TRACT "D", THE PRESERVE AREA IS THE PERPETUAL RESPONSIBILITY OF THE ASSOCIATION AND MAY IN NO WAY BE ALTERED FROM THEIR NATURAL STATE. ACTIVITIES PROHIBITED WITHIN THE CONSERVATION AREA INCLUDE, BUT ARE NOT LIMITED TO, CONSTRUCTION OR PLACING OF BUILDINGS ON OR ABOVE THE GROUND; DUMPING OR PLACING SOIL OR OTHER SUBSTANCES SUCH AS TRASH; REMOVAL OR DESTRUCTION OF TREES, SHRUBS, OR OTHER VEGETATION; WITH THE EXCEPTION OF EXOTIC/NUISANCE VEGETATION REMOVAL; ANY OTHER ACTIVITIES DETRIMENTAL TO DRAINAGE; FLOOD CONTROL, WATER CONSERVATION, EROSION CONTROL, OR FISH AND WILDLIFE HABITAT CONSERVATION OR PRESERVATION.
- TRACTS "E", "F", "G" AND "H" AS SHOWN HEREON, ARE HEREBY RESERVED FOR THE BOCA ISLES SOUTH PROPERTY OWNERS ASSOCIATION, INC., ITS SUCCESSORS AND ASSIGNS, FOR LANDSCAPE BUFFER PURPOSES AND ARE THE PERPETUAL MAINTENANCE OBLIGATION OF SAID ASSOCIATION, ITS SUCCESSORS AND ASSIGNS, WITHOUT RECOURSE TO PALM BEACH COUNTY.
- TRACT "I", AS SHOWN HEREON, IS HEREBY DEDICATED TO THE BOARD OF COUNTY COMMISSIONERS OF PALM BEACH COUNTY, FLORIDA, FOR THE PERPETUAL USE OF THE PUBLIC FOR PUBLIC STREET PURPOSES.

- DRAINAGE EASEMENTS, AS SHOWN HEREON ARE HEREBY DEDICATED IN PERPETUITY FOR DRAINAGE PURPOSES. THE MAINTENANCE OF ALL DRAINAGE FACILITIES LOCATED THEREIN SHALL BE THE PERPETUAL MAINTENANCE OBLIGATION OF THE BOCA ISLES SOUTH PROPERTY OWNERS ASSOCIATION, INC., ITS SUCCESSORS AND ASSIGNS, WITHOUT RECOURSE TO PALM BEACH COUNTY.
- THE UTILITY EASEMENTS AS SHOWN ARE DEDICATED IN PERPETUITY FOR THE CONSTRUCTION AND MAINTENANCE OF UTILITY FACILITIES, INCLUDING CABLE TELEVISION SYSTEMS. THE INSTALLATION OF CABLE TELEVISION SYSTEMS SHALL NOT INTERFERE WITH THE CONSTRUCTION AND MAINTENANCE OF OTHER UTILITIES.
- THE LAKE MAINTENANCE EASEMENTS AND LAKE MAINTENANCE ACCESS EASEMENTS, AS SHOWN HEREON ARE HEREBY RESERVED FOR THE BOCA ISLES SOUTH PROPERTY OWNERS ASSOCIATION, INC., ITS SUCCESSORS AND ASSIGNS FOR ACCESS TO STORMWATER MANAGEMENT AND DRAINAGE FACILITIES LOCATED WITHIN THE ASSOCIATED WATER MANAGEMENT TRACTS FOR PURPOSES OF PERFORMING ANY AND ALL MAINTENANCE ACTIVITIES PURSUANT TO THE MAINTENANCE OBLIGATION OF SAID ASSOCIATION, ITS SUCCESSORS AND ASSIGNS, WITHOUT RECOURSE TO PALM BEACH COUNTY.
- PALM BEACH COUNTY SHALL HAVE THE RIGHT, BUT NOT THE OBLIGATION, TO MAINTAIN ANY PORTION OF THE DRAINAGE SYSTEM ENCOMPASSED BY THIS PLAT WHICH IS ASSOCIATED WITH THE DRAINAGE OF PUBLIC ROADS, INCLUDING THE RIGHT TO UTILIZE FOR PROPER PURPOSES ASSOCIATED WITH SAID DRAINAGE SYSTEM.
- THE LIMITED ACCESS EASEMENTS AS SHOWN HEREON ARE HEREBY DEDICATED TO THE BOARD OF COUNTY COMMISSIONERS OF PALM BEACH COUNTY, FLORIDA, FOR THE PURPOSE OF CONTROL AND JURISDICTION OVER ACCESS RIGHTS.
- THE LIFT STATION EASEMENT AS SHOWN HEREON IS HEREBY DEDICATED IN PERPETUITY TO PALM BEACH COUNTY WATER UTILITY DEPARTMENT, ITS SUCCESSORS AND ASSIGNS, FOR LIFT STATION AND RELATED PURPOSES.
- TRACT "J", AS SHOWN HEREON, IS HEREBY RESERVED FOR THE BOCA ISLES SOUTH PROPERTY OWNERS ASSOCIATION, INC., ITS SUCCESSORS AND ASSIGNS, FOR LANDSCAPE AND CROSS-ACCESS PURPOSES AND IS THE PERPETUAL MAINTENANCE OBLIGATION OF SAID ASSOCIATION, ITS SUCCESSORS AND ASSIGNS, WITHOUT RECOURSE TO PALM BEACH COUNTY.
- THE PEDESTRIAN ACCESS EASEMENTS AS SHOWN HEREON, ARE HEREBY RESERVED FOR THE BOCA ISLES SOUTH PROPERTY OWNERS ASSOCIATION, INC., ITS SUCCESSORS AND ASSIGNS, FOR PEDESTRIAN ACCESS PURPOSES AND ARE THE PERPETUAL MAINTENANCE OBLIGATION OF SAID ASSOCIATION, ITS SUCCESSORS AND ASSIGNS, WITHOUT RECOURSE TO PALM BEACH COUNTY.

IN WITNESS WHEREOF, BOCA GREENS, INC., A FLORIDA CORPORATION, HAS CAUSED THESE PRESENTS TO BE SIGNED BY ITS VICE-PRESIDENT AND ITS CORPORATE SEAL TO BE AFFIXED HERETO BY AND WITH THE AUTHORITY OF ITS BOARD OF DIRECTORS, THIS 3 DAY OF MARCH, 1994.

BOCA GREENS, INC.  
 A FLORIDA CORPORATION  
 BY: Stuart Miller  
 VICE PRESIDENT

### ACKNOWLEDGEMENT

STATE OF FLORIDA )  
 COUNTY OF DADE ) SS  
 I, Stuart Miller, who is personally known to me, and did not take an oath, and who executed the foregoing instrument as Vice President of BOCA GREENS, INC., A FLORIDA CORPORATION, AND ACKNOWLEDGED TO AND BEFORE ME THAT HE EXECUTED SUCH INSTRUMENT AS SUCH OFFICER OF SAID CORPORATION, THAT THE SEAL AFFIXED HERETO IS THE CORPORATE SEAL OF SAID CORPORATION AND THAT IT WAS AFFIXED HERETO BY DUE AND REGULAR CORPORATE AUTHORITY, AND THAT SAID INSTRUMENT IS THE FREE ACT AND DEED OF SAID CORPORATION.

WITNESS MY HAND AND OFFICIAL SEAL THIS 3 DAY OF MARCH, 1994.  
 MY COMMISSION EXPIRES: NOV-16-1994

WITNESS: James A. Thiele  
 (NAME) JAMES A. THIELE

### TITLE CERTIFICATION

STATE OF FLORIDA )  
 COUNTY OF BROWARD ) SS  
 I, Gerald L. Knight, A DULY LICENSED ATTORNEY IN THE STATE OF FLORIDA, DO HEREBY CERTIFY THAT I HAVE EXAMINED THE TITLE TO THE HEREON DESCRIBED PROPERTY; THAT I FIND THE TITLE TO THE PROPERTY IS VESTED TO BOCA GREENS, INC., A FLORIDA CORPORATION; THAT THE CURRENT TAXES HAVE BEEN PAID; THAT THERE ARE NO MORTGAGES OF RECORD; AND THAT THERE ARE ENCUMBRANCES OF RECORD BUT THOSE ENCUMBRANCES DO NOT PROHIBIT THE CREATION OF THE SUBDIVISION DEPICTED BY THIS PLAT.

DATE: Mar 4, 1994  
 UPDATE: May 19, 1994  
 BY: Gerald L. Knight  
 GERALD L. KNIGHT  
 ATTORNEY AT LAW

### APPROVALS - BOARD OF COUNTY COMMISSIONERS OF PALM BEACH COUNTY

PALM BEACH COUNTY BOARD OF COUNTY COMMISSIONERS  
 PALM BEACH COUNTY

THIS PLAT IS HEREBY APPROVED FOR RECORD THIS 19 DAY OF July, 1994

BY: Mary McCarty  
 MARY MCCARTY, CHAIR

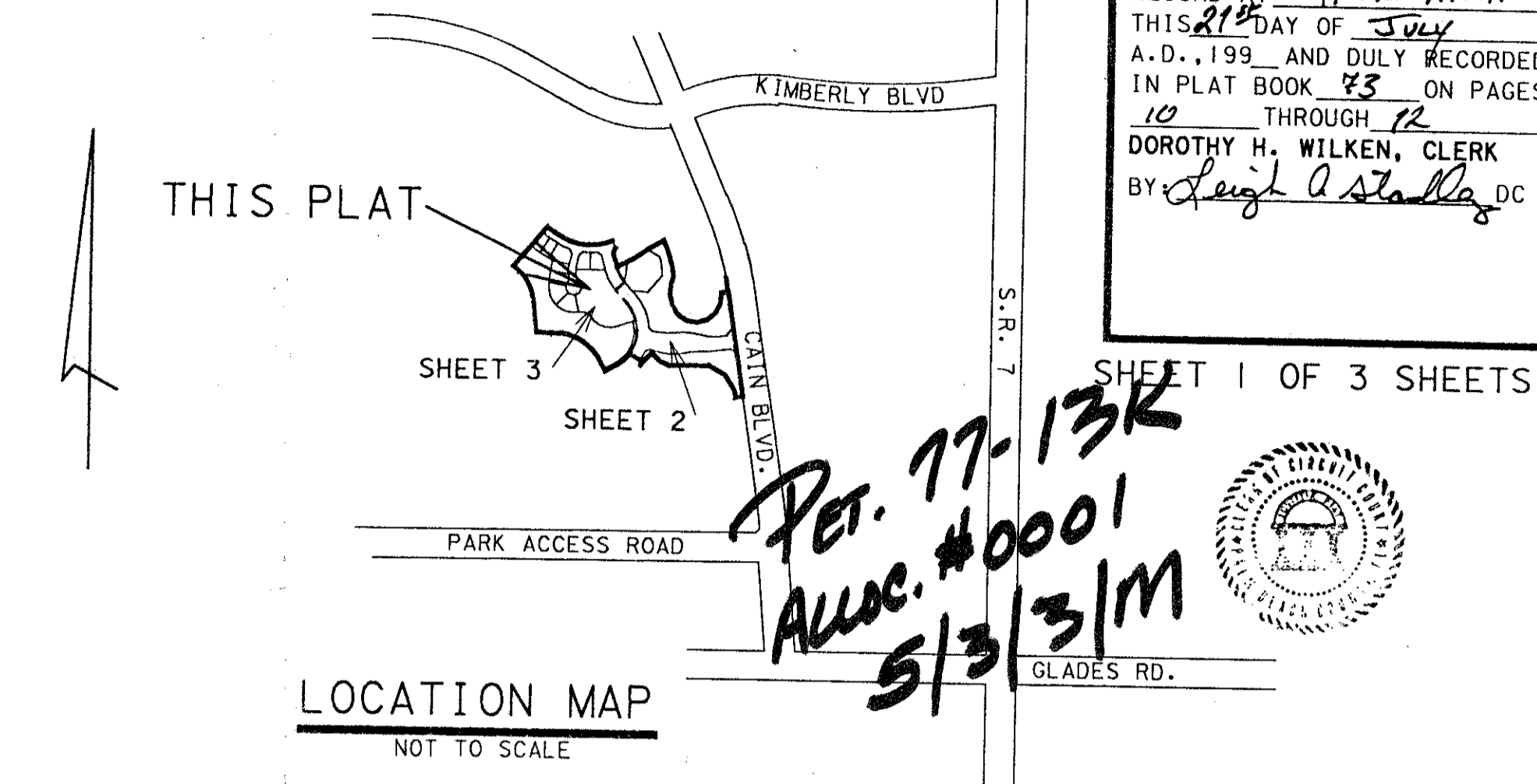
ATTEST: Dorothy H. Wilken, CLERK BY Debra Cowart, DEPUTY CLERK

COUNTY ENGINEER  
 THIS PLAT IS HEREBY APPROVED FOR RECORD THIS 19 DAY OF July, 1994

BY: George T. Webb, P.E.  
 GEORGE T. WEBB, P.E.  
 COUNTY ENGINEER

P.U.D. STATISTICS

PETITION NO. 77-13  
 ACREAGE 18.872  
 UNITS 9  
 DENSITY 0.477 D.U./AC.  
 TYPE OF UNITS SINGLE FAMILY



### ACCEPTANCE OF RESERVATIONS

STATE OF FLORIDA )  
 COUNTY OF PALM BEACH ) SS  
 THE BOCA ISLES SOUTH PROPERTY OWNERS ASSOCIATION, INC. HEREBY ACCEPTS THE DEDICATIONS OR RESERVATIONS TO SAID ASSOCIATION AS STATED AND SHOWN HEREON, AND HEREBY ACCEPTS ITS MAINTENANCE OBLIGATIONS FOR SAME AS STATED HEREON, DATED THIS 16th DAY OF JUNE, 1994.

BOCA ISLES SOUTH PROPERTY OWNERS ASSOCIATION INC.  
 A FLORIDA CORPORATION NOT FOR PROFIT  
 BY: Tammy McDonald  
 TAMMY McDONALD, PRESIDENT

### ACKNOWLEDGEMENT

STATE OF FLORIDA )  
 COUNTY OF PALM BEACH ) SS  
 BEFORE ME PERSONALLY APPEARED TAMMY McDONALD, WHO IS PERSONALLY KNOWN TO ME AND DID NOT TAKE AN OATH, AND WHO EXECUTED THE FOREGOING INSTRUMENT AS PRESIDENT OF THE BOCA ISLES SOUTH PROPERTY OWNERS ASSOCIATION, INC., A FLORIDA CORPORATION, AND ACKNOWLEDGED TO AND BEFORE ME THAT SHE EXECUTED SUCH INSTRUMENT AS SUCH OFFICER OF SAID CORPORATION, AND THAT THE SEAL AFFIXED TO THE FOREGOING INSTRUMENT IS THE CORPORATE SEAL OF SAID CORPORATION AND THAT IT WAS AFFIXED TO SAID INSTRUMENT BY DUE AND REGULAR CORPORATE AUTHORITY, AND THAT SAID INSTRUMENT IS THE FREE ACT AND DEED OF SAID CORPORATION.

WITNESS MY HAND AND OFFICIAL SEAL THIS 16th DAY OF June, 1994.  
 MY COMMISSION EXPIRES: SEPT 3, 1995

WITNESS: Rebecca Harper  
 (NAME) REBECCA HARPER

### ACCEPTANCE OF RESERVATIONS

STATE OF FLORIDA )  
 COUNTY OF PALM BEACH ) SS  
 THE BOCA ISLES CLUB SOUTH, INC. HEREBY ACCEPTS THE DEDICATIONS OR RESERVATIONS TO SAID ASSOCIATION AS STATED AND SHOWN HEREON, AND HEREBY ACCEPTS ITS MAINTENANCE OBLIGATIONS FOR SAME AS STATED HEREON, DATED THIS 24th DAY OF JUNE, 1994.

BOCA ISLES CLUB SOUTH, INC.  
 A FLORIDA CORPORATION  
 BY: Jonathan M. Jaffe  
 JONATHAN M. JAFFE, VICE PRESIDENT

### ACKNOWLEDGEMENT

STATE OF FLORIDA )  
 COUNTY OF PALM BEACH ) SS  
 BEFORE ME PERSONALLY APPEARED JONATHAN M. JAFFE, WHO IS PERSONALLY KNOWN TO ME AND DID NOT TAKE AN OATH, AND WHO EXECUTED THE FOREGOING INSTRUMENT AS VICE PRESIDENT OF BOCA ISLES CLUB SOUTH, INC., A FLORIDA CORPORATION, AND ACKNOWLEDGED TO AND BEFORE ME THAT HE EXECUTED SUCH INSTRUMENT AS SUCH OFFICER OF SAID CORPORATION, AND THAT THE SEAL AFFIXED TO THE FOREGOING INSTRUMENT IS THE CORPORATE SEAL OF SAID CORPORATION AND THAT IT WAS AFFIXED TO SAID INSTRUMENT BY DUE AND REGULAR CORPORATE AUTHORITY, AND THAT SAID INSTRUMENT IS THE FREE ACT AND DEED OF SAID CORPORATION.

WITNESS MY HAND AND OFFICIAL SEAL THIS 24 DAY OF June, 1994.  
 MY COMMISSION EXPIRES: SEP 15, 1995

WITNESS: Betty Tibbitts  
 (NAME) BETTY TIBBITTS

NOTARY PUBLIC - STATE OF FLORIDA  
 COMMISSION NO. 285910

BOCA ISLES SOUTH PHASE 5B

73/10

0208-620

TAZ 777  
 BOCA ISLES SOUTH PHASE 5B  
 77-13  
 BOCA GREENS, INC.  
 33439  
 BOCA ISLES CLUB SOUTH, INC.  
 33439