

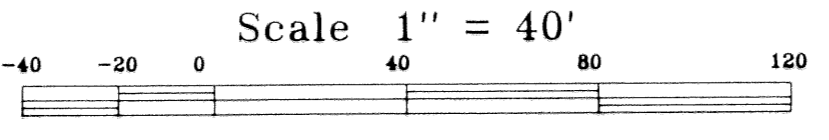
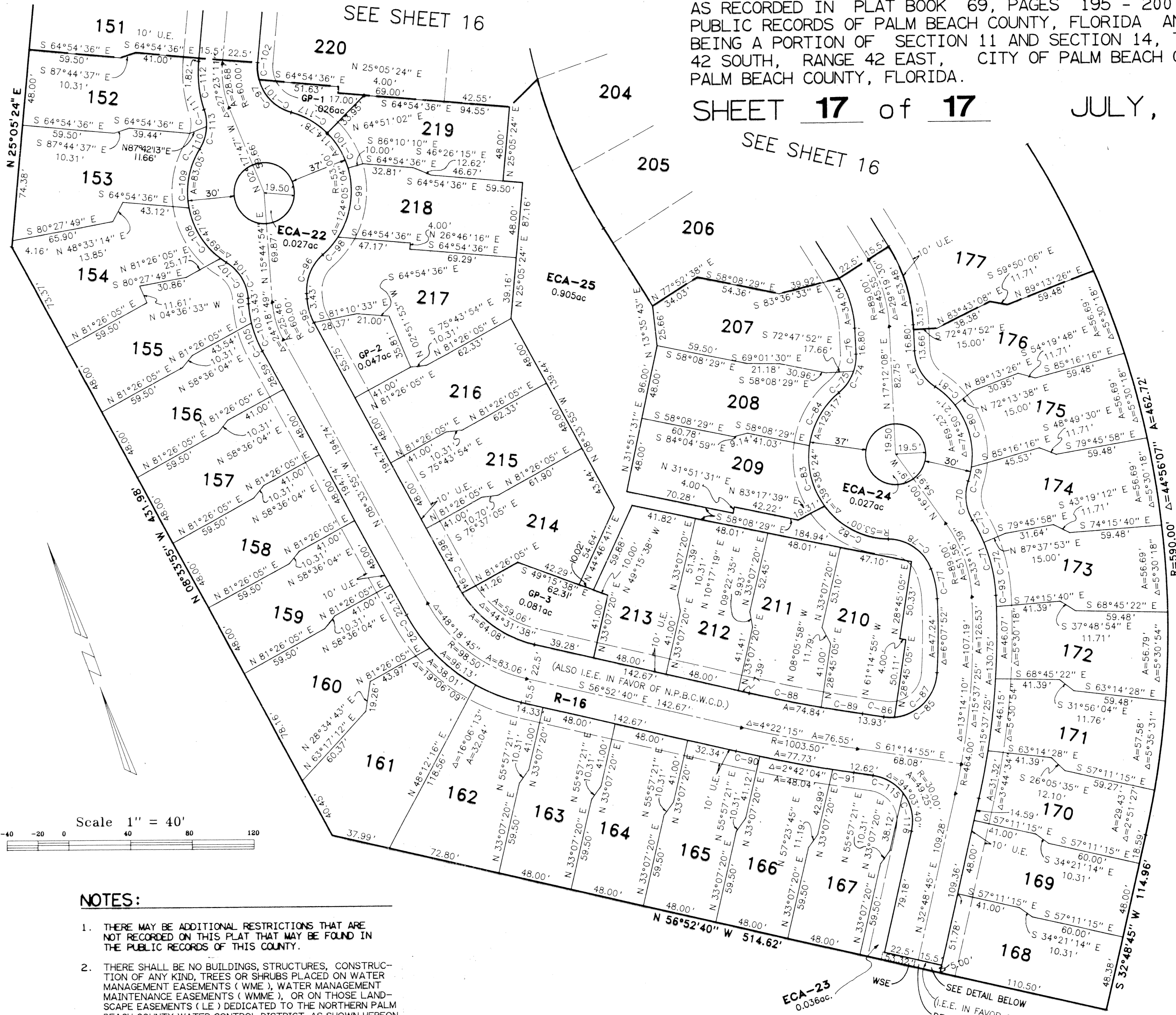
PLAT THREE, BALLENISSLES

BEING A REPLAT OF A PORTION OF PLAT TWO, HANSEN - JDM AS RECORDED IN PLAT BOOK 69, PAGES 195 - 200 OF THE PUBLIC RECORDS OF PALM BEACH COUNTY, FLORIDA AND ALSO BEING A PORTION OF SECTION 11 AND SECTION 14, TOWNSHIP 42 SOUTH, RANGE 42 EAST, CITY OF PALM BEACH GARDENS, PALM BEACH COUNTY, FLORIDA.

SHEET 17 of 17 JULY, 1994

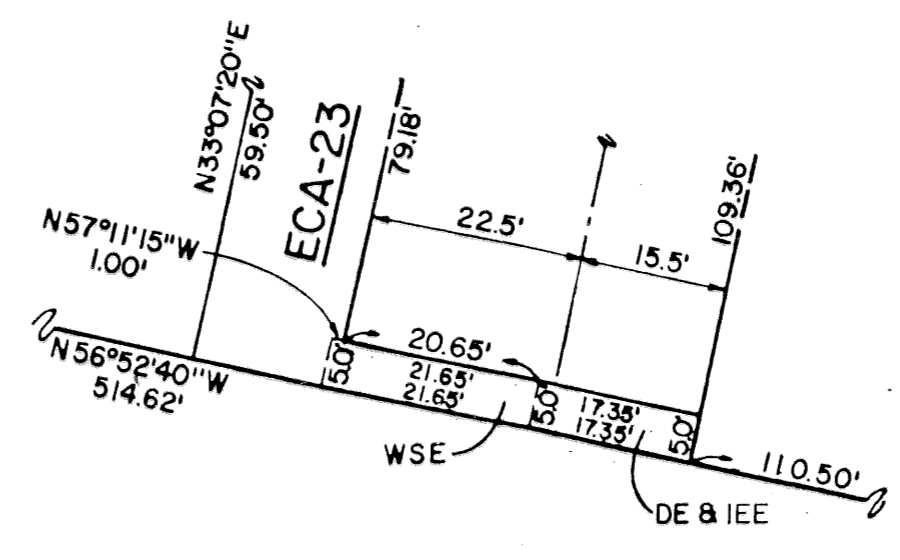
STATE OF FLORIDA COUNTY OF PALM BEACH THIS PLAT WAS FILED FOR RECORD AT THIS DAY OF A.D. 1994 AND DULY RECORDED IN PLAT BOOK ON PAGES AND BY: DOROTHY WILKEN, CLERK CIRCUIT COURT. DC

Table with columns: Name, Delta, Radius, Length, Bearing, Chord, Tangent. Lists 117 items (C-1 to C-117) with numerical and bearing data.



NOTES:

- 1. THERE MAY BE ADDITIONAL RESTRICTIONS THAT ARE NOT RECORDED ON THIS PLAT THAT MAY BE FOUND IN THE PUBLIC RECORDS OF THIS COUNTY.
2. THERE SHALL BE NO BUILDINGS, STRUCTURES, CONSTRUCTION OF ANY KIND, TREES OR SHRUBS PLACED ON WATER MANAGEMENT EASEMENTS (WME)...
3. WHERE DRAINAGE AND UTILITY EASEMENTS INTERSECT, DRAINAGE EASEMENTS WILL TAKE PRECEDENCE.
4. THERE SHALL BE NO TREES, SHRUBS, OR LANDSCAPING PLACED ON WATER AND SEWER EASEMENTS OR DRAINAGE EASEMENTS...
5. THERE SHALL BE NO BUILDINGS OR ANY KIND OF CONSTRUCTION PLACED ON UTILITY EASEMENTS OR DRAINAGE EASEMENTS.
6. APPROVAL OF LANDSCAPING ON UTILITY EASEMENTS OTHER THAN WATER AND SEWER SHALL BE ONLY WITH APPROVAL OF THE UTILITIES OCCUPYING SAME.
7. LOT LINES ARE NOT OCCUPYING (RAD).
8. BEARING BASIS: BEARINGS HEREON ARE BASED UPON THE SOUTH LINE OF THE NORTH ONE-HALF OF SECTION 14, TOWNSHIP 42 SOUTH, RANGE 42 EAST, BEING NORTH 88°19'50" WEST.



LEGEND

- PRM = SET PERMANENT REFERENCE MONUMENT (PRM)
PRM = FOUND PERMANENT REFERENCE MONUMENT (PRM)
PCP = PERMANENT CONTROL POINTS (PCP)
C = CHANGE IN DIRECTION
NPBCWCD = NORTHERN PALM BEACH COUNTY WATER CONTROL DISTRICT
C/L = CENTERLINE
R/W = RIGHT-OF-WAY
P.B. = PLAT BOOK
PAGE(S) = PAGE(S)
ORB = OFFICIAL RECORD BOOK
P.C. = POINT OF CURVATURE
P.T. = POINT OF TANGENCY
RAD = RADIAL
R = RADIUS
A = DELTA OR CENTRAL ANGLE
L = ARC LENGTH OF CURVE
T = TANGENT
CH = CHORD BEARING
WME = WATER MANAGEMENT EASEMENT
WMAE = WATER MANAGEMENT ACCESS EASEMENT
WMAE = WATER MANAGEMENT MAINTENANCE EASEMENT
DE = DRAINAGE EASEMENT
WSE = WATER AND SEWER EASEMENT
WLE = WATER LINE EASEMENT
SSE = SANITARY SEWER EASEMENT
UE = GENERAL UTILITY EASEMENT
LE = LANDSCAPE EASEMENT
CA-# = COMMON AREA TRACT WITH NUMBER
ECA-# = EXCLUSIVE COMMON AREA TRACT WITH NUMBER
GC-# = GOLF COURSE TRACT WITH NUMBER
W-# = WATER MANAGEMENT TRACT WITH NUMBER
GP-# = GUEST PARKING TRACT WITH NUMBER

KESHAVARZ & ASSOCIATES, INC. THIS INSTRUMENT WAS PREPARED BY RICHARD P. BREITENBACH IN THE OFFICES OF KESHAVARZ & ASSOCIATES, INC. 1280 N. CONGRESS AVENUE, SUITE 206 WEST PALM BEACH, FLORIDA 33409 (407) 689-8600/ FAX 689-7476

TAZ 95 SUBDIVISION * Ballenissles Plat 3 PAGE 43 FLOOD MAP ZONING ZIP CODE PUD NAME cl Palm Beach Gardens