

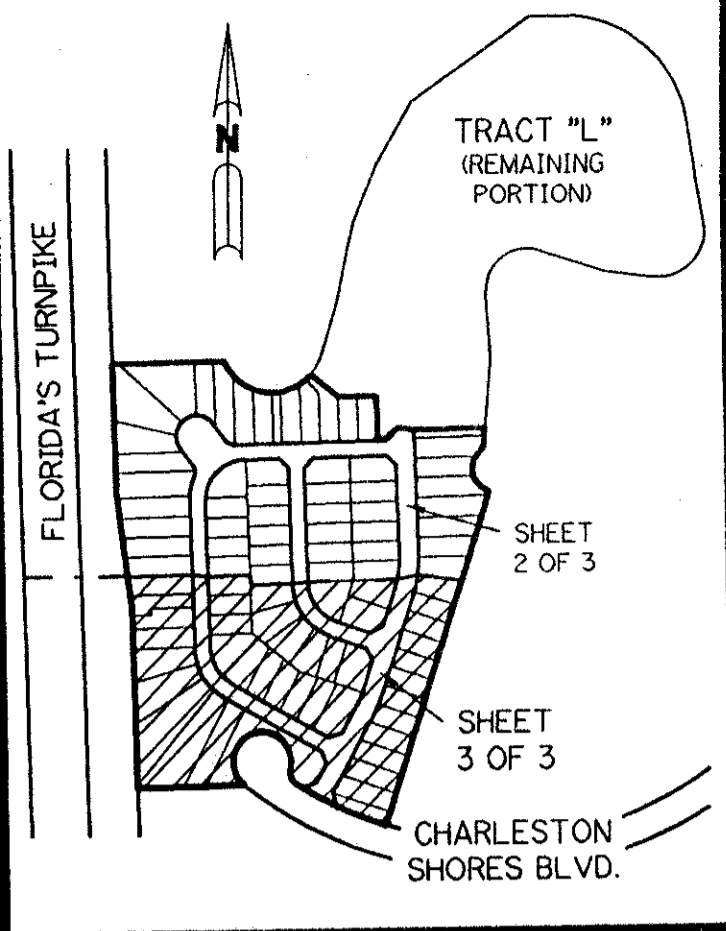
0533-026

A PART OF LAKE CHARLESTON PLANNED UNIT DEVELOPMENT

LAKE CHARLESTON - TRACT "L" - PLAT ONE

BEING A REPLAT OF A PORTION OF TRACT "L" ACCORDING TO THE
 PLAT OF LAKE CHARLESTON PLAT NO. 3 - P.U.D. AS RECORDED IN PLAT BOOK 62,
 PAGES 55 THROUGH 68, INCLUSIVE, OF THE PUBLIC RECORDS OF PALM BEACH COUNTY, FLORIDA.
 SECTIONS 8 AND 9, TOWNSHIP 45 SOUTH, RANGE 42 EAST

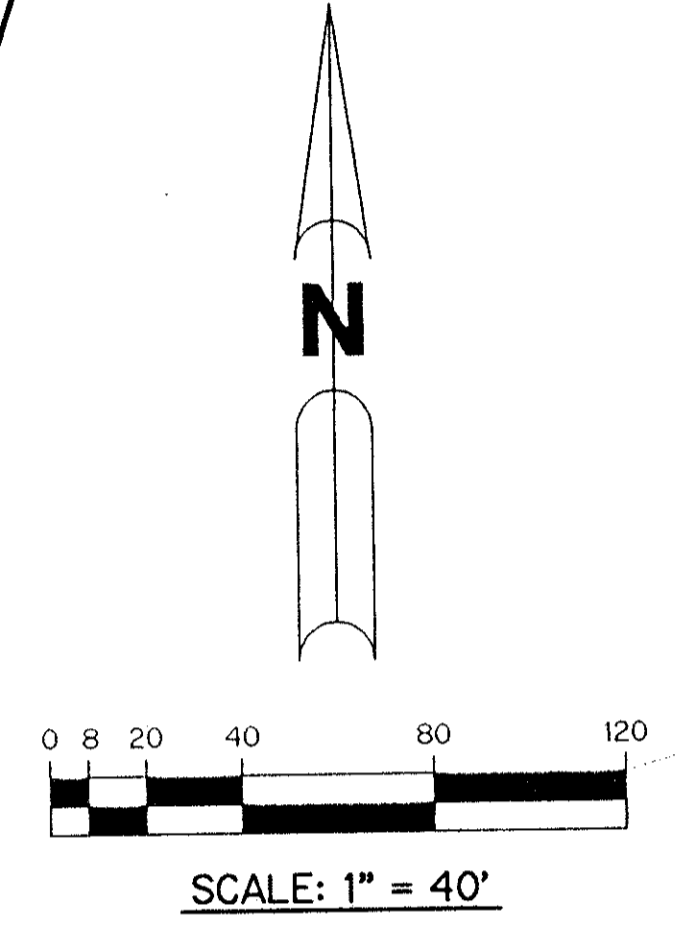
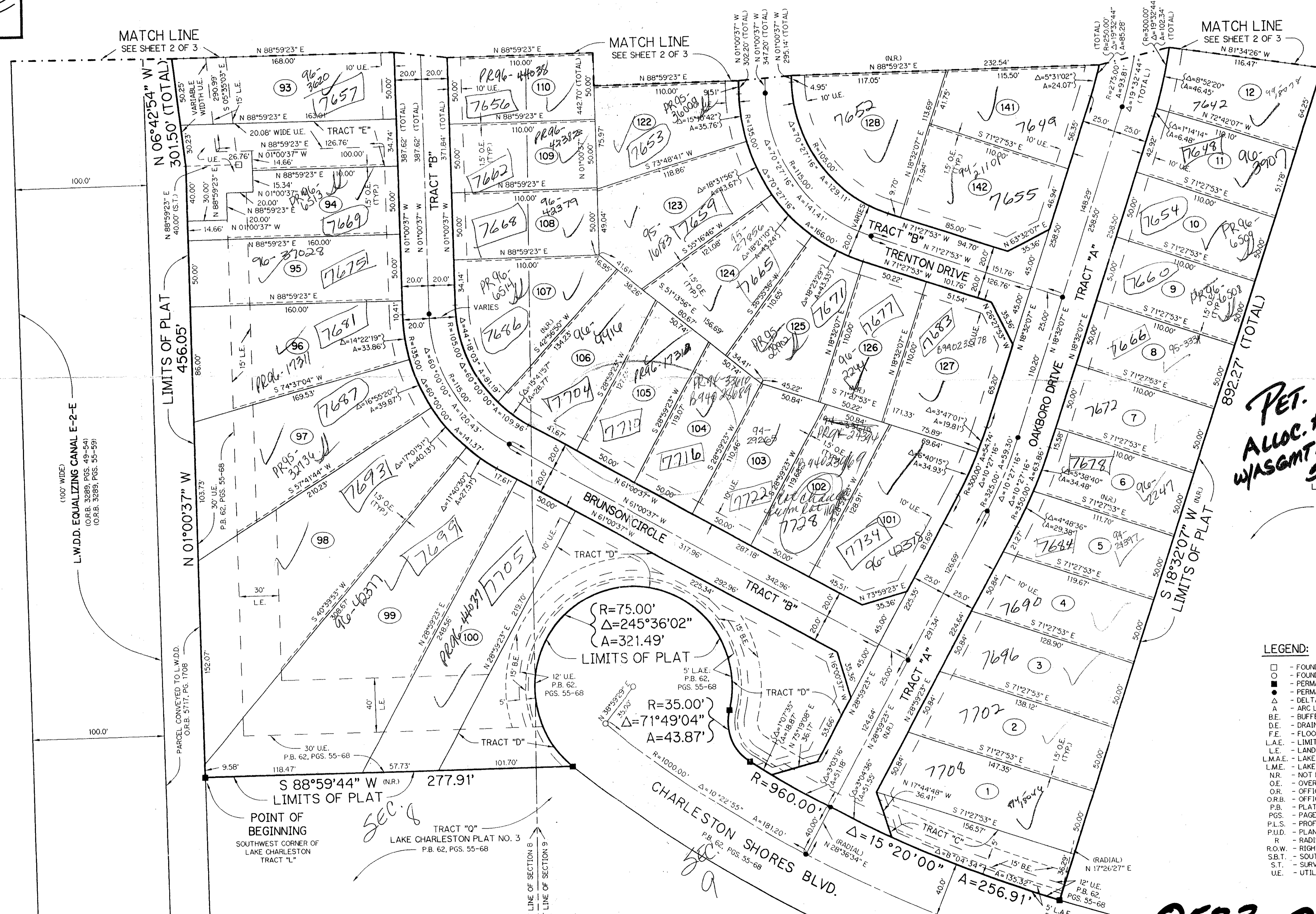
SHEET 3 OF 3 APRIL, 1994



KEY MAP
N.T.S.

FLORIDA'S TURNPIKE

SUBDIVISION # Lake Charleston Tract
 PLAT # 49
 FLOOD MAP # 185A
 ZONING R1S/SE
 QUAD # 49
 ZIP CODE 33461
 SE 86-96
 PRO NAME
 TAX 439



PET. 86-96A
 ALLOC. # 0018
 WASGMT. OF CREDIT LETTER
 5/2/2/E
 LAKE CHARLESTON
 PARCEL "M"
 P.B. 64, PGS. 10-12

- LEGEND:
- - FOUND PERMANENT REFERENCE MONUMENT, PLS #2201
 - - FOUND PERMANENT CONTROL POINT, PLS #2201
 - - PERMANENT REFERENCE MONUMENT, PLS #4213
 - - PERMANENT CONTROL POINT, PLS #4213
 - Δ - DELTA ANGLE
 - A - ARC LENGTH
 - BE - BUFFER EASEMENT
 - DE - DRAINAGE EASEMENT
 - FE - FLOOD PLAIN EASEMENT
 - LAE - LIMITED ACCESS EASEMENT
 - LE - LANDSCAPE EASEMENT
 - LMAE - LAKE MAINTENANCE ACCESS EASEMENT
 - LME - LAKE MAINTENANCE EASEMENT
 - NR - NOT RADIAL
 - OE - OVERHANG EASEMENT
 - OR - OFFICIAL RECORD
 - OR.B - OFFICIAL RECORD BOOK
 - P.B. - PLAT BOOK
 - PGS. - PAGES
 - P.L.S. - PROFESSIONAL LAND SURVEYOR
 - P.U.D. - PLANNED UNIT DEVELOPMENT
 - R - RADIUS
 - R.O.W. - RIGHT-OF-WAY
 - S.B.T. - SOUTHERN BELL TELEPHONE
 - S.T. - SURVEY TIE LINE
 - UE - UTILITY EASEMENT

THIS INSTRUMENT PREPARED BY
 PERRY C. WHITE, P.L.S. 4213 STATE OF FLORIDA
 LAWSON, NOBLE AND ASSOCIATES, INC.
 ENGINEERS PLANNERS SURVEYORS
 WEST PALM BEACH, FLORIDA

0533-026 T3/49
LAKE CHARLESTON - TRACT "L" - PLAT ONE
 SHEET 3 OF 3