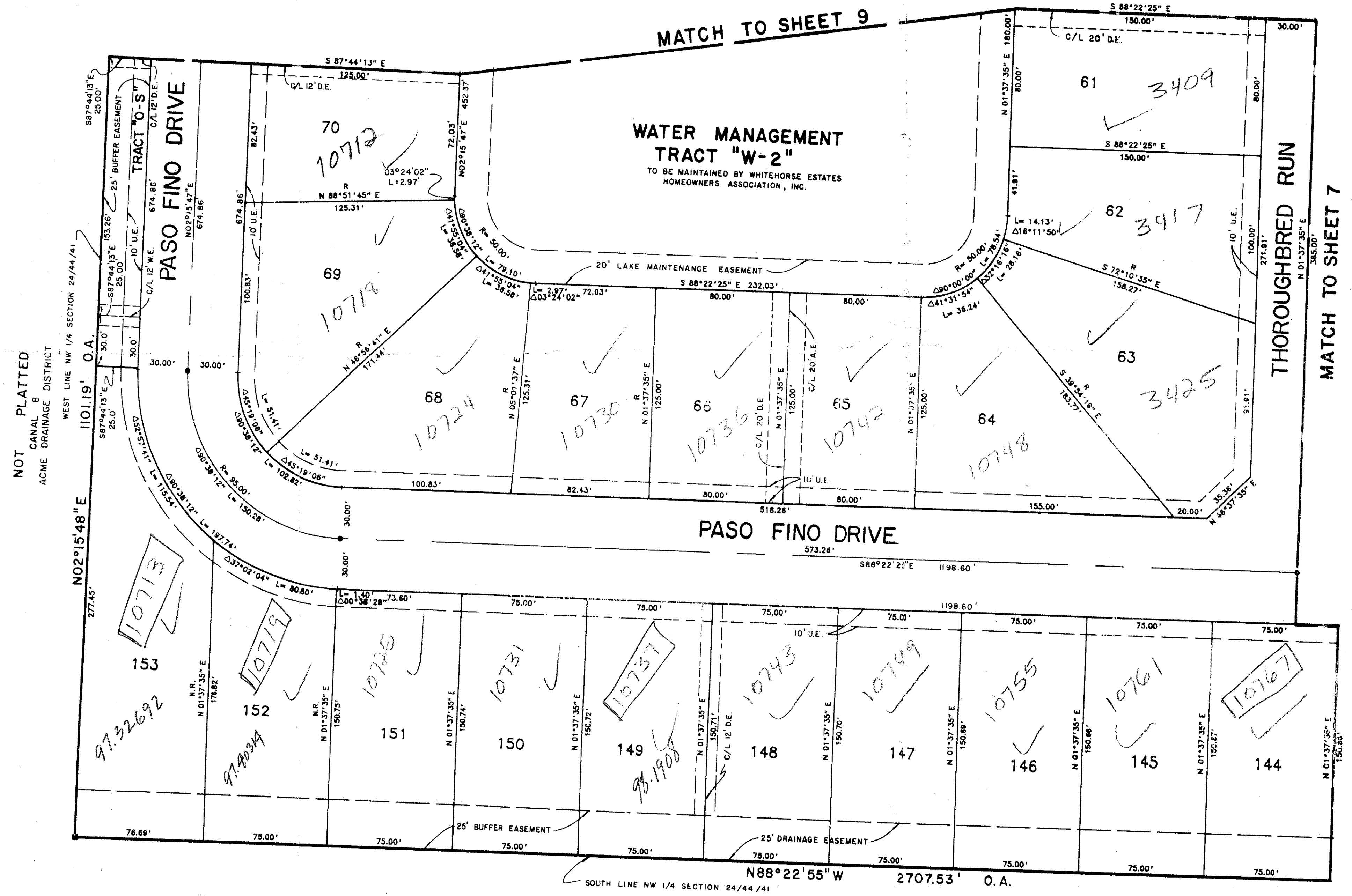


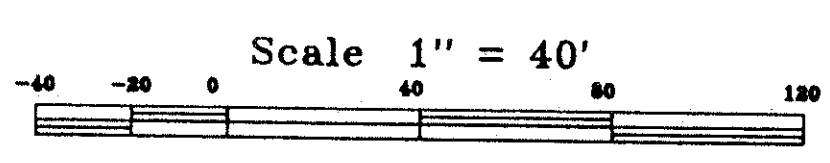
WHITEHORSE ESTATES

PALM VIEW LAKES A PLANNED UNIT DEVELOPMENT
 BEING A REPLAT OF A PORTION OF TRACTS 5 THRU 13 INCLUSIVE, BLOCK 26, PALM BEACH
 FARMS COMPANY PLAT NO. 3, PLAT BOOK 2, PAGES 45 THRU 54, INCLUSIVE, PUBLIC
 RECORDS OF PALM BEACH COUNTY, FLORIDA AND A PORTION OF THE NORTHWEST QUARTER
 OF SECTION 24, TOWNSHIP 44 SOUTH, RANGE 41 EAST, PALM BEACH COUNTY, FLORIDA.
 SHEET 10 OF 10 JULY, 1994.

STATE OF FLORIDA
 COUNTY OF PALM BEACH SS
 This Plat was filed for record at _____
 M. this _____ day of _____, 19____
 and duly recorded in Plat Book No. _____
 on Page _____
 Dorothy H. Wilken, Clerk of the Circuit Court
 By _____ D.C.



PET. 86-100A
 5/2/4/G



WHITEHORSE ESTATES
 SHEET 71
 PLAT NO. 3, PLAT BOOK 2, PAGES 45 THRU 54
 BEING A REPLAT OF A PORTION OF TRACTS 5 THRU 13 INCLUSIVE, BLOCK 26, PALM BEACH FARMS COMPANY PLAT NO. 3, PLAT BOOK 2, PAGES 45 THRU 54, INCLUSIVE, PUBLIC RECORDS OF PALM BEACH COUNTY, FLORIDA AND A PORTION OF THE NORTHWEST QUARTER OF SECTION 24, TOWNSHIP 44 SOUTH, RANGE 41 EAST, PALM BEACH COUNTY, FLORIDA.
 SHEET 10 OF 10
 JULY, 1994

NOT PLATTED

0517, 001
 73/71

Landmark Surveying & Mapping Inc.
 1850 FOREST HILL BOULEVARD
 PH. (407)433-5405 SUITE 100 W.P.B. FLORIDA

WHITEHORSE ESTATES