

# PLAT OF BENT TREE P.U.D. PHASE 1

IN PART OF SECTION 2, TOWNSHIP 42 SOUTH, RANGE 42 EAST  
CITY OF PALM BEACH GARDENS, PALM BEACH COUNTY, FLORIDA

SHEET NO. 2 OF 5

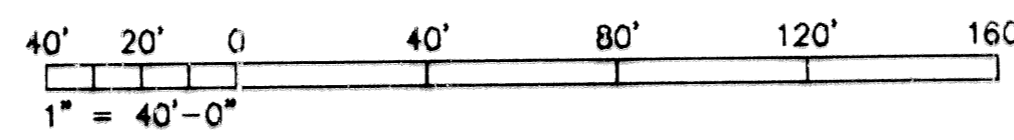
CENTRAL BOULEVARD  
P.B. 6 PG. 88



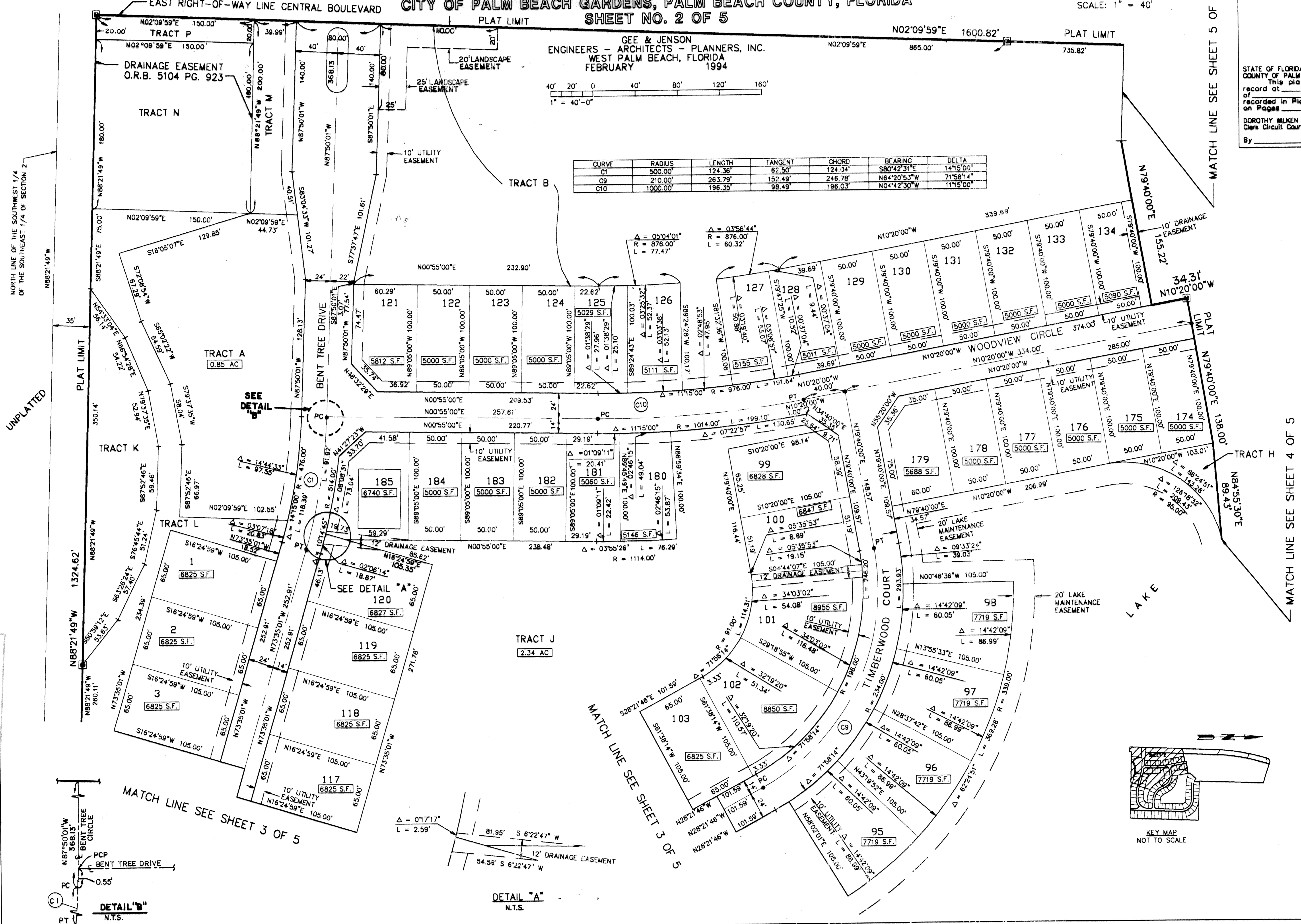
MATCH LINE SEE SHEET 5 OF 5

STATE OF FLORIDA  
COUNTY OF PALM BEACH  
This plat was filed for  
record at \_\_\_\_\_ M. this \_\_\_\_\_ day  
of \_\_\_\_\_ 1994, and duly  
recorded in Plat Book No. \_\_\_\_\_  
on Pages \_\_\_\_\_ thru \_\_\_\_\_  
DOROTHY WILKEN  
Clerk Circuit Court  
By \_\_\_\_\_ D.C.

GEE & JENSON  
ENGINEERS - ARCHITECTS - PLANNERS, INC.  
WEST PALM BEACH, FLORIDA  
FEBRUARY 1994

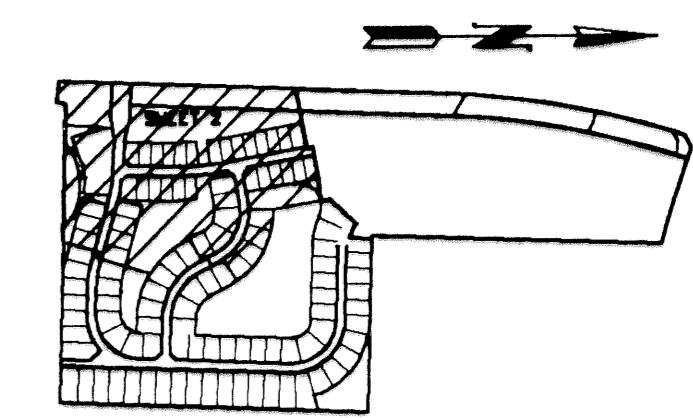
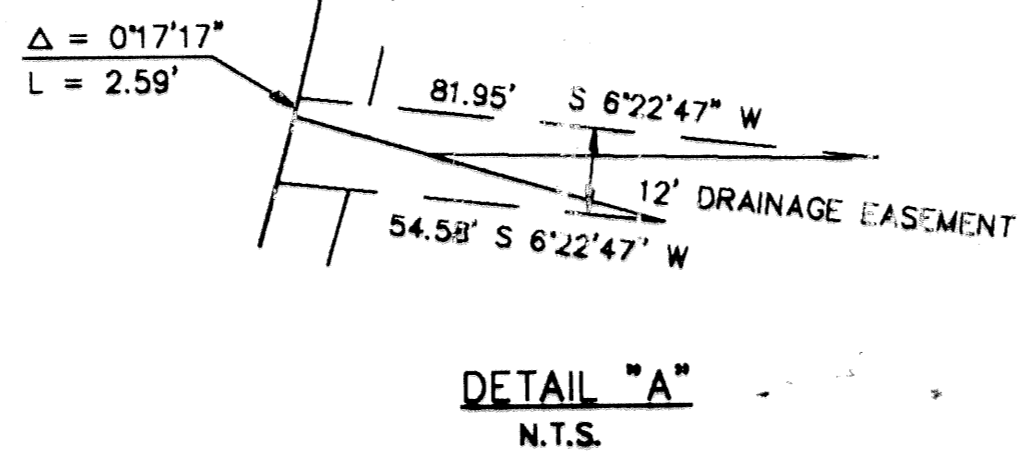
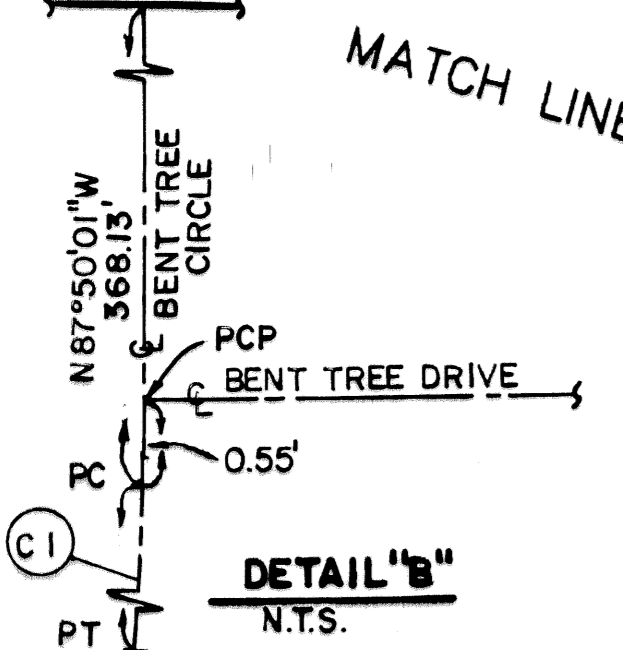


CURVE	RADIUS	LENGTH	TANGENT	CHORD	BEARING	DELTA
C1	500.00'	124.36'	62.50'	124.04'	S80°42'31"E	141°15'00"
C9	210.00'	263.79'	152.49'	246.78'	N64°20'53"W	71°58'14"
C10	1000.00'	196.35'	98.49'	196.03'	N04°42'30"W	111°19'00"



SUBDIVISION \* Bent Tree P.U.D.  
BOOK 73 PAGE 90  
CITY OF PALM BEACH GARDENS

COMPUTED \_\_\_\_\_  
DRAWN \_\_\_\_\_  
CHECKED \_\_\_\_\_  
APPROVED \_\_\_\_\_  
JOB NO. 92-258



MATCH LINE SEE SHEET 4 OF 5