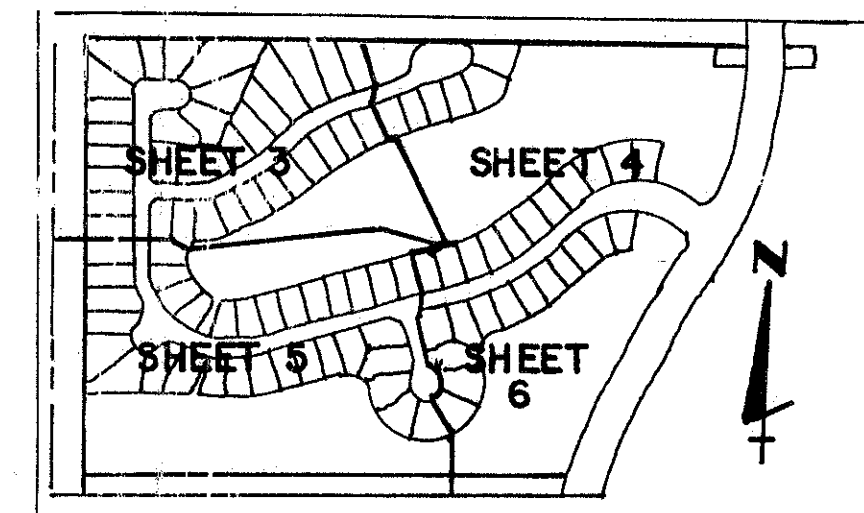


BINK'S FOREST OF THE LANDINGS AT WELLINGTON P. U. D. PLAT 3

IN PART OF SECTION 6, TOWNSHIP 44 SOUTH, RANGE 41 EAST
AND IN PART OF SECTION 31, TOWNSHIP 43 SOUTH, RANGE 41 EAST

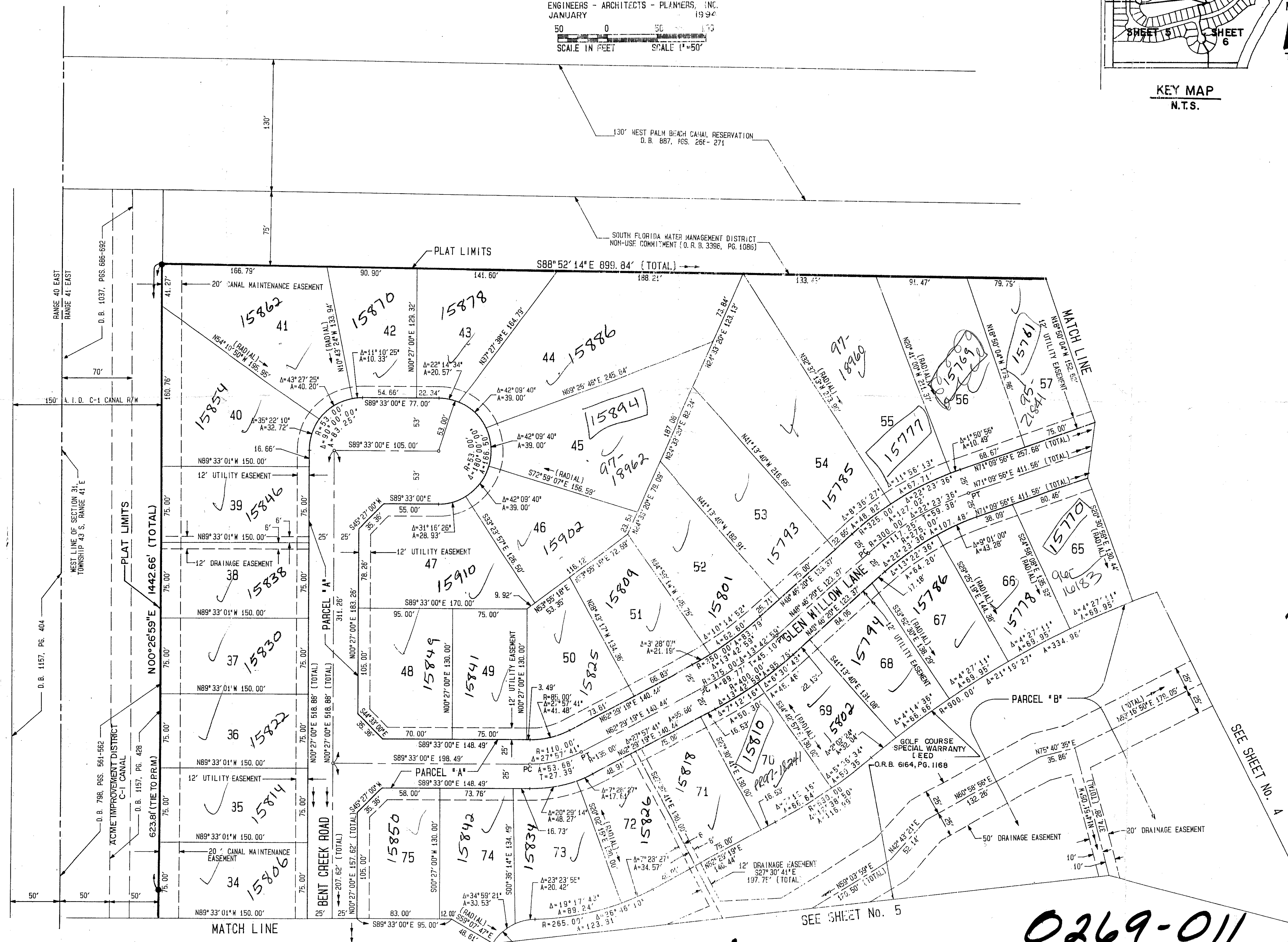
PALM BEACH COUNTY, FLORIDA
IN SIX SHEETS SHEET No. 3

SEE AND JENSON
ENGINEERS - ARCHITECTS - PLANNERS, INC.
JANUARY 1994
SCALE IN FEET SCALE 1"=50'



STATE OF FLORIDA
COUNTY OF PALM BEACH
This plat was filed for
record at _____ M. this _____ day
of _____ 1994 and duly
recorded in Plat Book No. _____
on Pages _____ and _____
DOROTHY H. WILKEN
Clerk Circuit Court
By: _____ D. C.

KEY MAP
N.T.S.



Subdivision of the
Beverly Forest of the
Landings
PAGE 103
FLOOD MAP #1003
ZONING RE
QUAD #77
ZIP CODE 33414
5689-2172
BUD NAME
WILSON

TAZ-727

UNPLATTED

PET. 78-287E
CURRENT FEES

3/43/11

73/103

COMPUTED D. W. LEI/CADD
DRAWN H. R. J./CADD
CHECKED M. J. J.
APPROVED _____

0269-011
BINK'S FOREST OF THE LANDINGS AT WELLINGTON PLAT 3
SEE SHEET No. 5
SEE SHEET No. 6