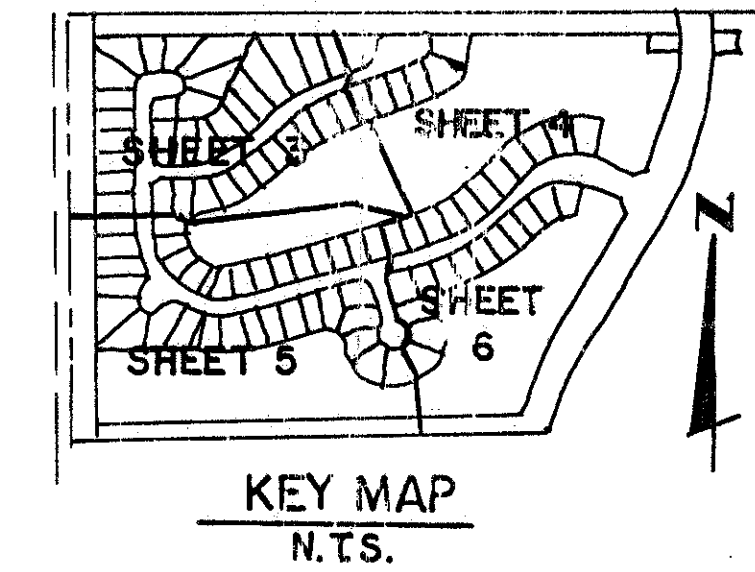


BINK'S FOREST OF THE LANDINGS AT WELLINGTON P. U. D. PLAT 3

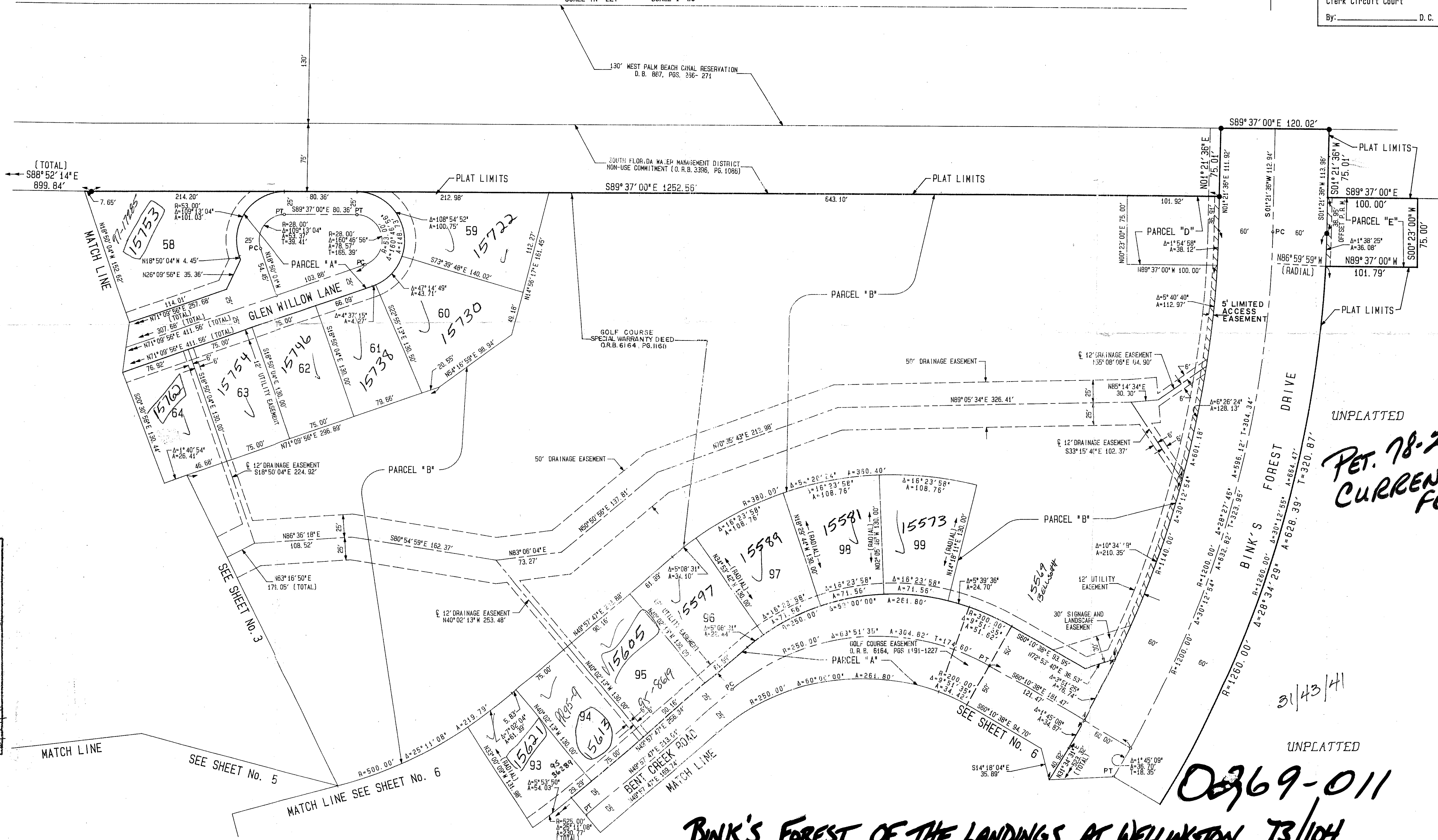
IN PART OF SECTION 6, TOWNSHIP 44 SOUTH, RANGE 41 EAST
 AND IN PART OF SECTION 31, TOWNSHIP 43 SOUTH, RANGE 41 EAST
 PALM BEACH COUNTY, FLORIDA
 IN SIX SHEETS SHEET No. 4

104

GEE AND JENSON
 ENGINEERS - ARCHITECTS - PLANNERS, INC.
 JANUARY 1994
 50 0 50 100
 SCALE IN FEET SCALE 1"=50'



STATE OF FLORIDA
 COUNTY OF PALM BEACH
 This plat was filed for
 record at _____ M. this _____ day
 of _____ 1994, and duly
 recorded in Plat Book No. _____
 on Pages _____ and _____
 DOROTHY H WILKEN
 Clerk Circuit Court
 By: _____ D.C.



*PET. 78-287E
 CURRENT
 FEES*

31/43/41

0269-011

**BINK'S FOREST OF THE LANDINGS AT WELLINGTON T3/104
 PLAT 3**

SUBDIVISION: Bink's Forest of the Landings
 BOOK: 73
 FLOOD ZONE: B
 QUAD: 77
 SE: 59-2172
 ZIP CODE: 33414
 PLAT: 104
 ZONING: RE
 TAZ-727

COMPUTED: D. M. LEI/CADD
 DRAWN: M. R. J./CADD
 CHECKED: M. J. J.
 APPROVED: _____

SEE SHEET No. 5

MATCH LINE SEE SHEET No. 6

SEE SHEET No. 3

SEE SHEET No. 6