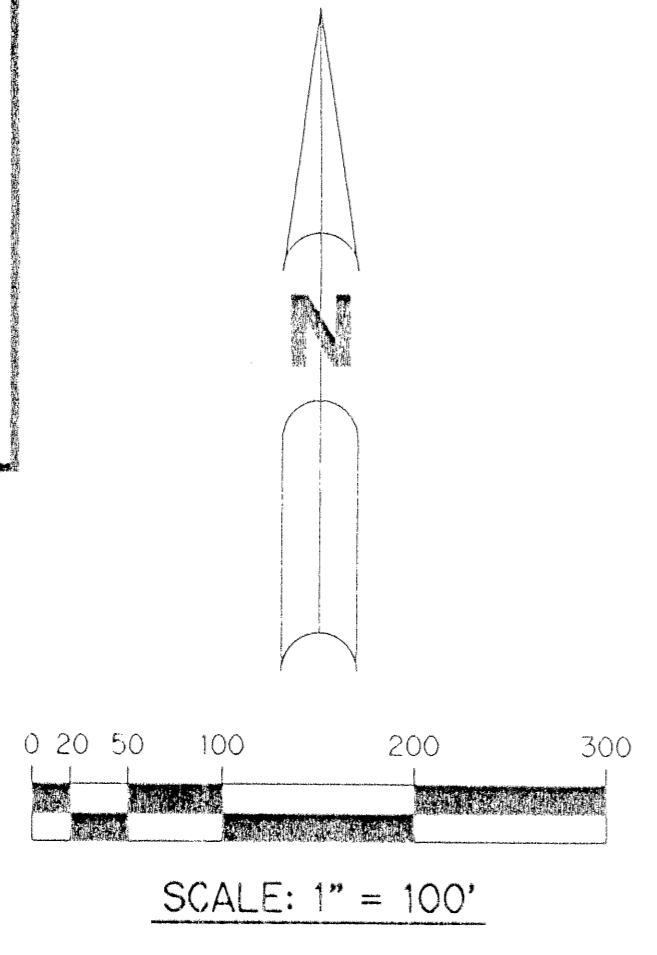
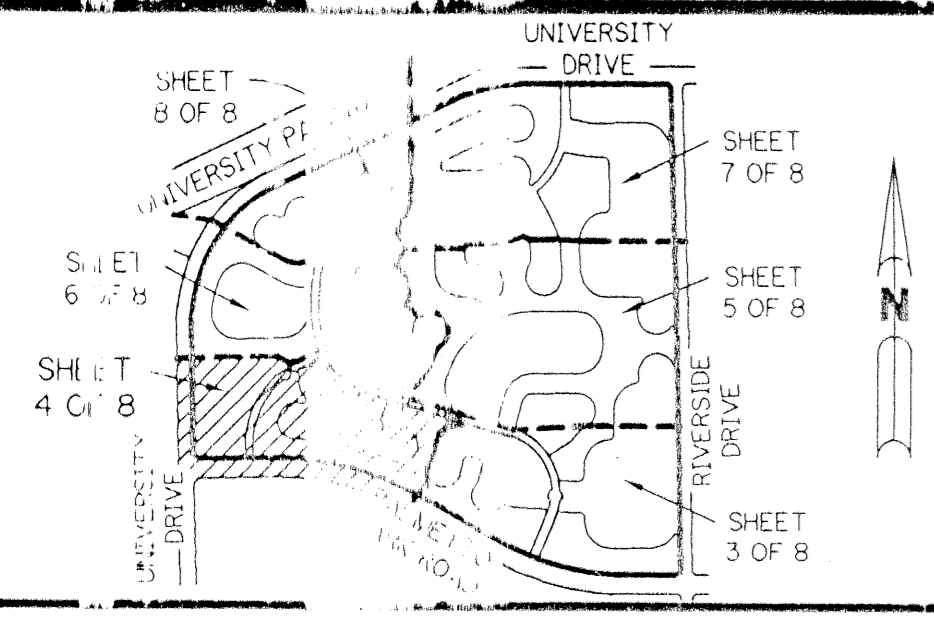


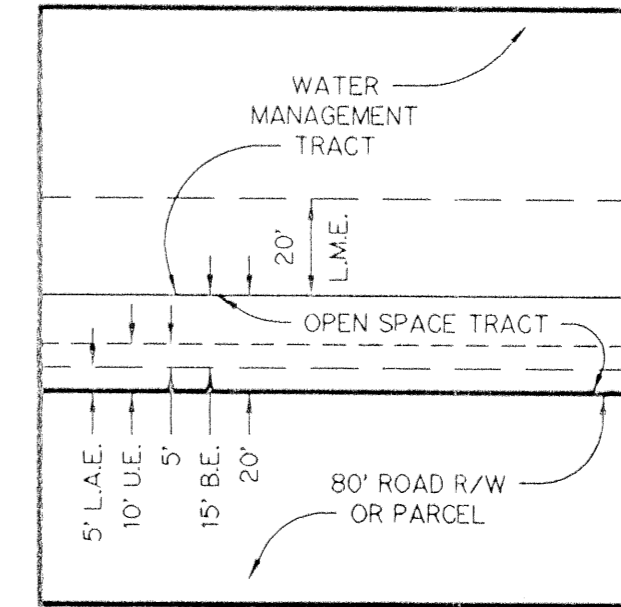
BOCA FALLS - PLAT ONE

A PART OF THE BAY WINDS PLANNED UNIT DEVELOPMENT
A PARCEL OF LAND LYING IN SECTION 22, TOWNSHIP 47 SOUTH, RANGE 41 EAST.
PALM BEACH COUNTY, FLORIDA.

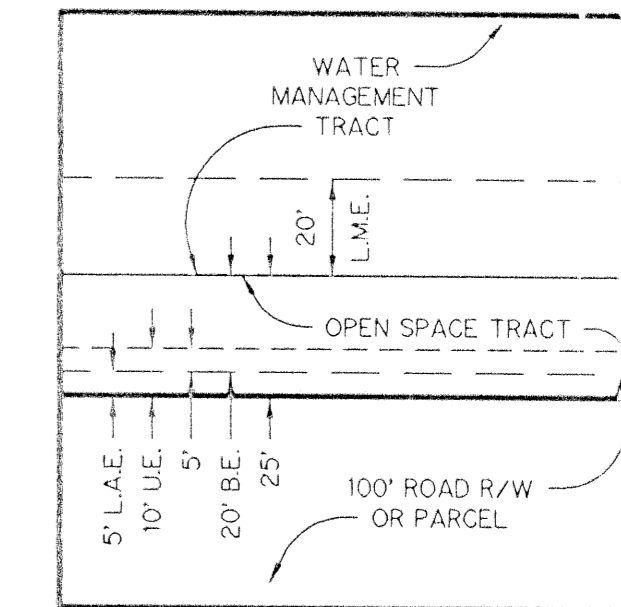
SHEET 4 OF 8 MAY, 1994



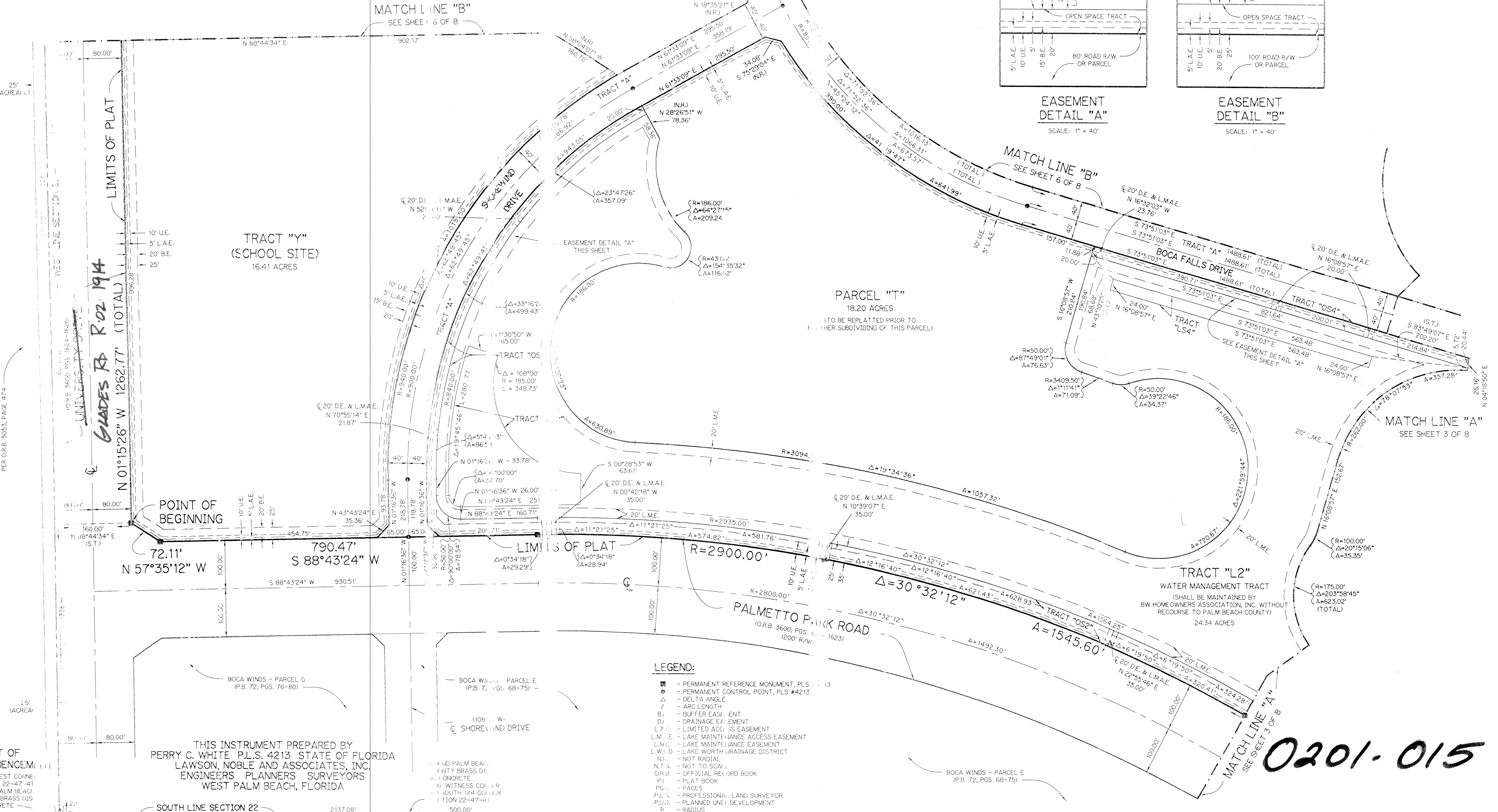
KEY MAP



EASEMENT DETAIL "A"
SCALE: 1" = 40'



EASEMENT DETAIL "B"
SCALE: 1" = 40'



- LEGEND:**
- - PERMANENT REFERENCE MONUMENT, PLS #15
 - - PERMANENT CONTROL POINT, PLS #4213
 - Δ - DELTA ANGLE
 - L - LAKE
 - R - RADIUS
 - BL - BUFFER EASEMENT
 - DI - DRAINAGE EASEMENT
 - LA.E. - LIMITED ACCESS EASEMENT
 - L.M.E. - LAKE MAINTENANCE ACCESS EASEMENT
 - L.M.W. - LAKE MAINTENANCE EASEMENT
 - L.W.D. - LAKE WORTH DRAINAGE DISTRICT
 - N.R. - NOT RADIAL
 - N.T.S. - NOT TO SCALE
 - O.R.B. - OFFICIAL RECORD BOOK
 - PI - PLAT BOOK
 - P.G. - PAGES
 - P.L.S. - PROFESSIONAL LAND SURVEYOR
 - P.U.D. - PLANNED UNIT DEVELOPMENT
 - R - RADIUS
 - R/W - RIGHT-OF-WAY
 - S.T. - SURVEY TIE
 - UI - UTILITY EASEMENT

THIS INSTRUMENT PREPARED BY
PERRY C. WHITE, P.L.S. 4213 STATE OF FLORIDA
LAWSON, NOBLE AND ASSOCIATES, INC.
ENGINEERS PLANNERS SURVEYORS
WEST PALM BEACH, FLORIDA

SUBDIVISION: BOCA FALLS - PLAT ONE
BOOK: 73
PAGE: 127
FLOOD ZONE: A0-1
QUAD: 69
SE: 80-17
ZIP CODE: 33433
PUB NAME: BAY WINDS P.U.D.

0201-015

BOCA FALLS - PLAT ONE 73/127 SHEET 4 OF 8