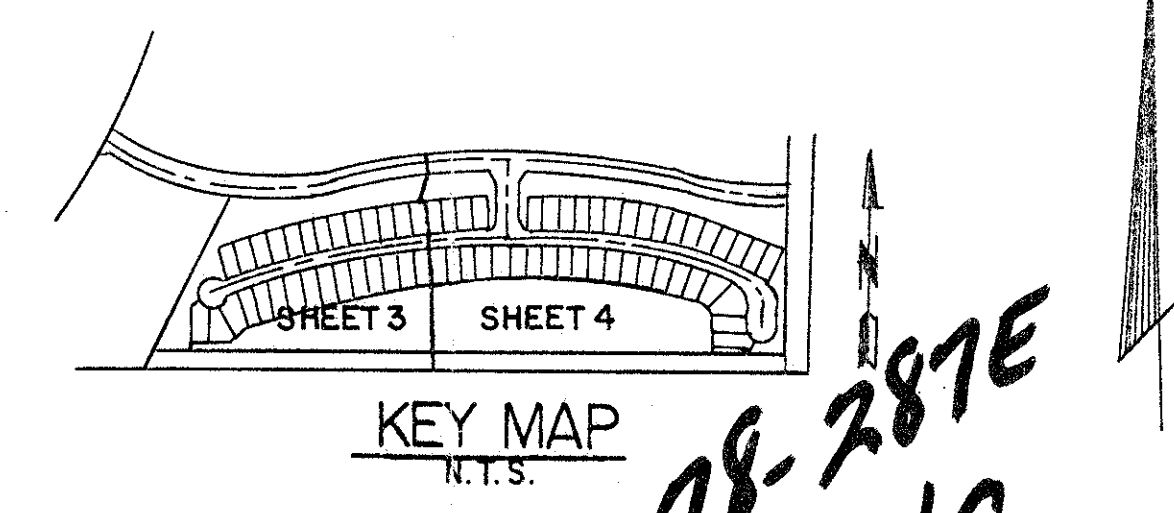


# BINK'S FOREST OF THE LANDINGS AT WELLINGTON P. U. D. PLAT 4

135

IN PART OF SECTION 6, TOWNSHIP 44 SOUTH, RANGE 41 EAST  
 AND IN PART OF SECTION 31, TOWNSHIP 43 SOUTH, RANGE 41 EAST  
 PALM BEACH COUNTY, FLORIDA  
 IN FOUR SHEETS SHEET No. 4

GEE AND JENSON  
 ENGINEERS - ARCHITECTS - PLANNERS, INC.  
 JANUARY 1994  
 SCALE IN FEET SCALE 1"=50'



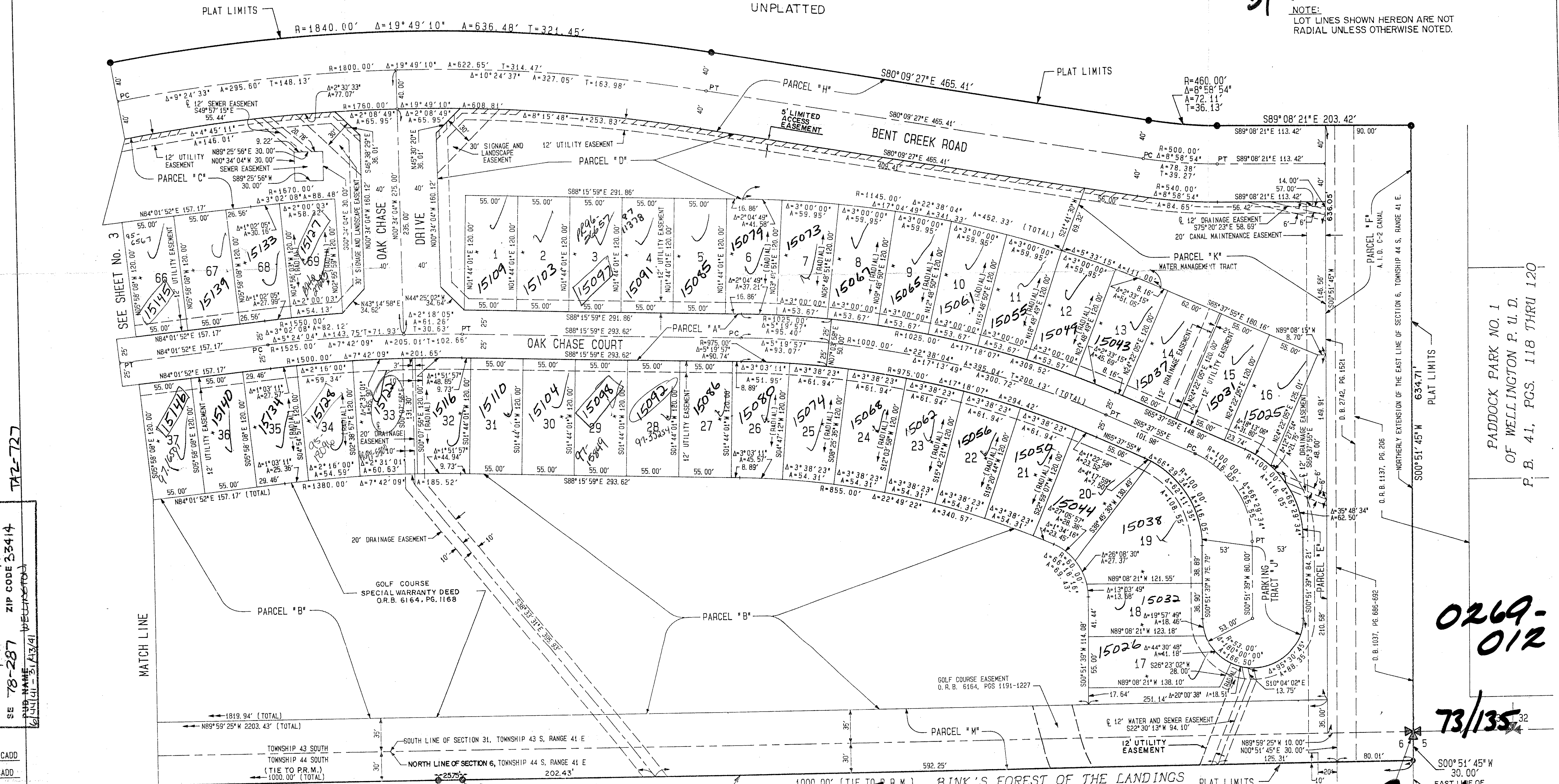
STATE OF FLORIDA  
 COUNTY OF PALM BEACH  
 This plat was filed for record at \_\_\_\_\_ M. this \_\_\_\_\_ day of \_\_\_\_\_ 1994, and duly recorded in Plat Book No. \_\_\_\_\_ on Pages \_\_\_\_\_ and \_\_\_\_\_.  
 DOROTHY H. WILKEN  
 Clerk Circuit Court  
 By: \_\_\_\_\_ D. C.

UNPLATTED

UNPLATTED

PET. 78-287E  
 5/2/4/G

NOTE:  
 LOT LINES SHOWN HEREON ARE NOT RADIAL UNLESS OTHERWISE NOTED.



SUBDIVISION + LANDINGS PLAT 4  
 BOOK 73 PAGE 135  
 FLOOD MAP # 0508  
 ZONING RE  
 QUAD # 16/77  
 SE 78-287 ZIP CODE 33414  
 PUB NAME  
 6/14/94 - 31/13/94

T-2-727

0269-012

73/135

BINK'S FOREST OF THE LANDINGS AT WELLINGTON P. U. D. - PLAT 1  
 P. B. 67 , PG. 56

BINK'S FOREST OF THE LANDINGS AT WELLINGTON P. U. D. - PLAT 4

PADDOCK PARK NO. 1  
 OF WELLINGTON P. U. D.  
 P. B. 41, PGS. 118 THRU 120

UTED  
 W. R. J. / CADD  
 W. J. J.  
 MOVED