

ROSSMOOR LAKES

SITUATE IN SECTION 27, TOWNSHIP 45 SOUTH, RANGE 42 EAST, PALM BEACH COUNTY, FLORIDA

FEBRUARY 1994

N00°12'02"W NOT PLATTED

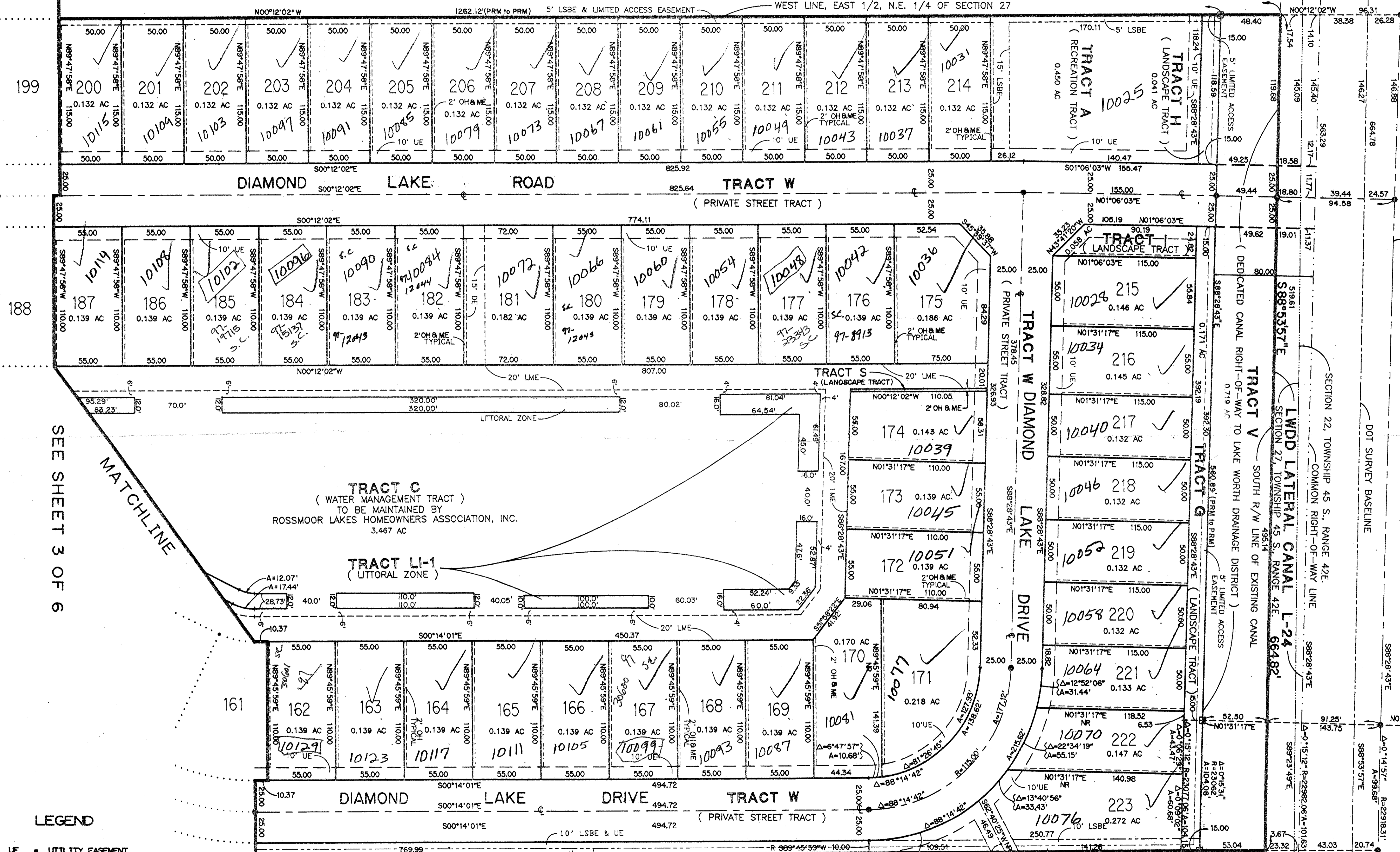
2653.51'

SHEET 2 OF 6

137

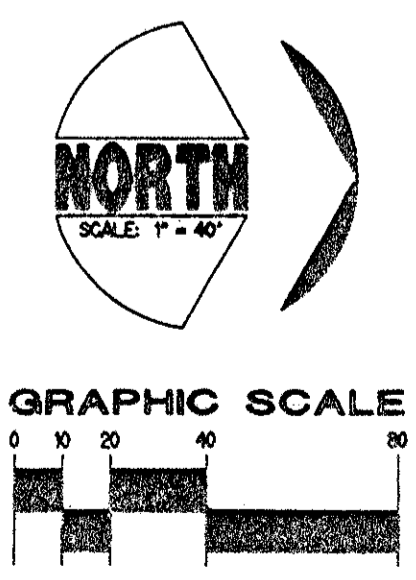
INDEX MAP

STATE OF FLORIDA
COUNTY OF PALM BEACH } SS
THIS PLAT WAS FILED FOR
RECORD AT _____ DAY OF
_____ A.D. 1994 AND
DULY RECORDED IN PLAT BOOK
_____ ON PAGES _____ AND
CIRCUIT COURT.
BY: _____ DC
DOROTHY WILKEN, CLERK



PET. 93-34
5/3/14
ALOC. # 0001
7/18/95

(PROJECT NO. 97931-2347)
(STATE ROAD 804)
OF BOYNTON BEACH BOULEVARD



KESHAVARZ & ASSOCIATES, INC.
THIS INSTRUMENT WAS PREPARED BY RICHARD P. BREITENBACH
IN THE OFFICES OF KESHAVARZ & ASSOCIATES, INC.
1280 N. CONGRESS AVENUE, SUITE 206
WEST PALM BEACH, FLORIDA 33409
(407) 689-8600 / FAX (407) 689-7470

ROSSMOOR LAKES

0626-001
73/137

BOOK 13
PAGE
FLOOD ZONE B/AI-20
FLOOD MAP # 185A
ZONING RTU
QUAD # 35
ZIP CODE 33463
TAX 44B
S.O.M.S.
PLAT 137