

ROSSMOOR LAKES

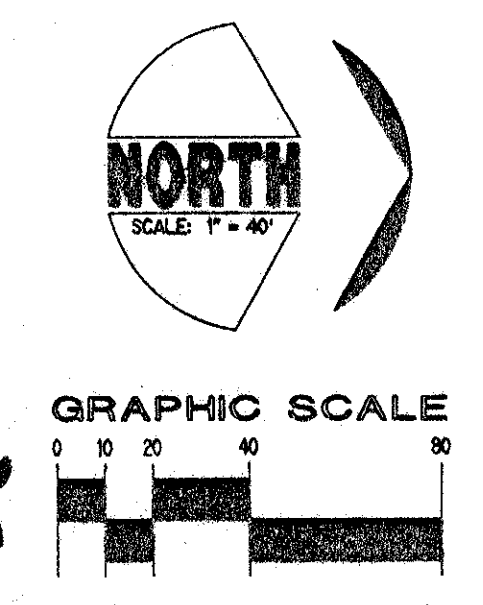
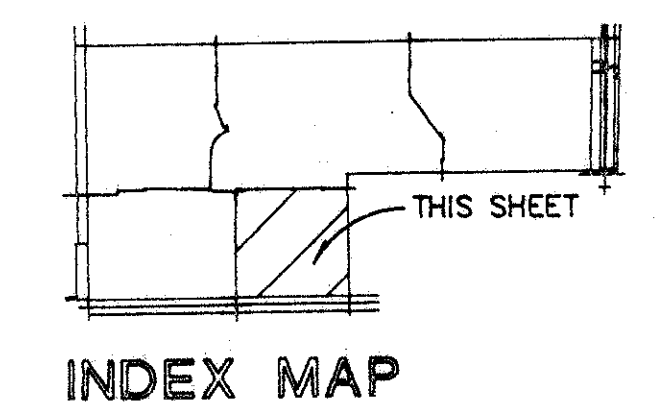
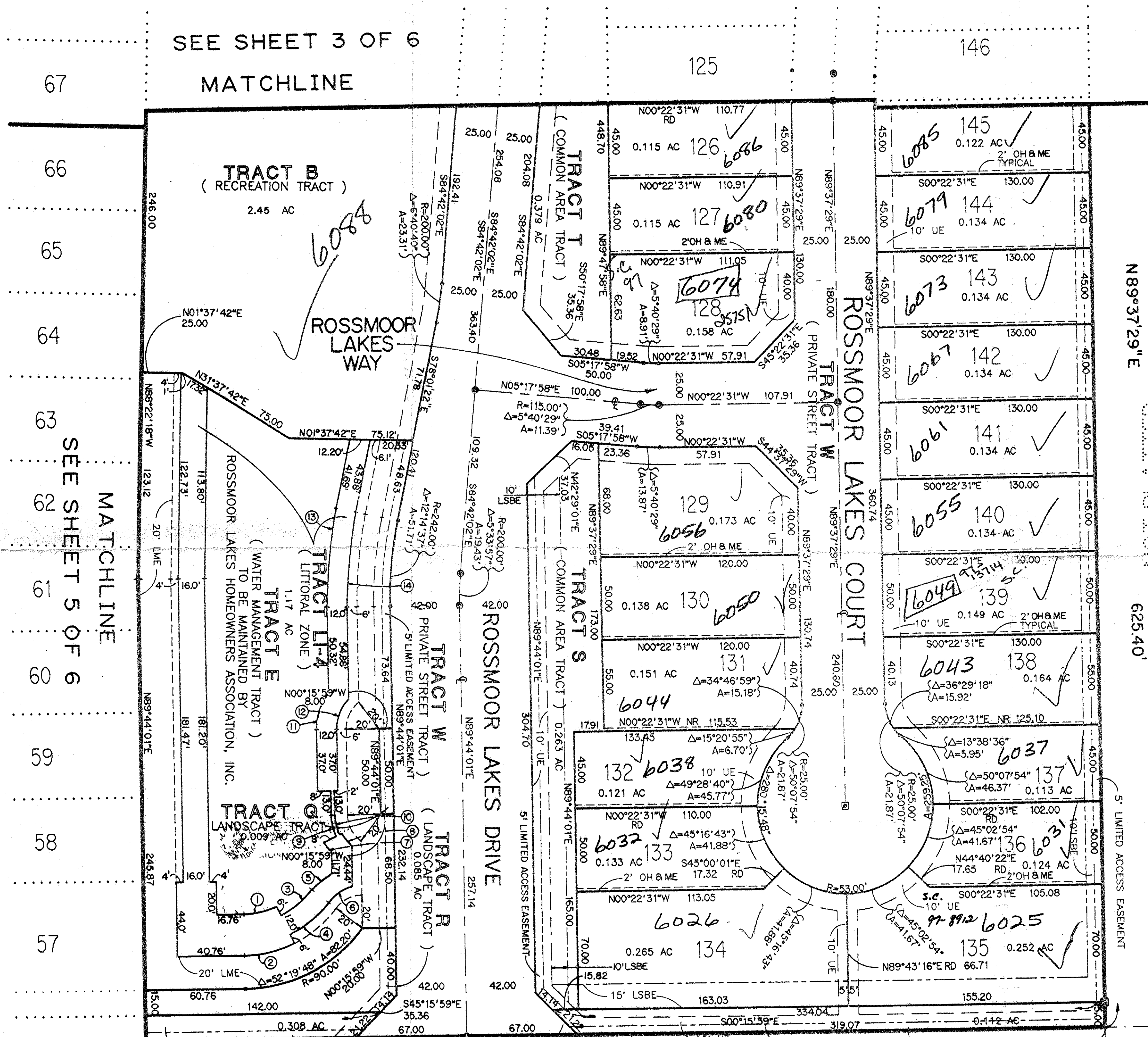
SITUATE IN SECTION 27, TOWNSHIP 45 SOUTH, RANGE 42 EAST, PALM BEACH COUNTY, FLORIDA
 FEBRUARY 1994 SHEET 6 OF 6

0626-001

141

STATE OF FLORIDA }
 COUNTY OF PALM BEACH } SS
 THIS PLAT WAS FILED FOR
 RECORD AT _____ DAY OF
 THIS _____ A.D., 1994 AND
 DULY RECORDED IN PLAT BOOK
 _____ ON PAGES _____ AND
 _____ CIRCUIT COURT.
 BY: _____ DC
 DOROTHY WILKEN, CLERK

SEE SHEET 3 OF 6
 MATCHLINE



*PET. 93-34
 5/3/94
 ALLOC #0001
 7/14/95*

CURVE DATA

- ① Δ = 25° 06' 42"
 A = 20.16'
 R = 46.00'
- ② Δ = 25° 06' 42"
 A = 30.68'
 R = 70.00'
- ③ Δ = 27° 13' 06"
 A = 24.70'
 R = 52.00'
- ④ Δ = 27° 13' 06"
 A = 30.40'
 R = 64.00'
- ⑤ Δ = 38° 59' 16"
 A = 15.96'
 R = 38.00'
- ⑥ Δ = 38° 59' 16"
 A = 17.69'
 R = 26.00'
- ⑦ Δ = 13° 51' 06"
 A = 9.19'
 R = 38.00'
- ⑧ Δ = 22° 10' 30"
 A = 10.06'
 R = 26.00'
- ⑨ Δ = 24° 00' 43"
 A = 12.57'
 R = 30.00'
- ⑩ Δ = 24° 00' 43"
 A = 11.73'
 R = 28.00'
- ⑪ Δ = 37° 51' 49"
 A = 25.11'
 R = 38.00'
- ⑫ Δ = 48° 11' 13"
 A = 20.96'
 R = 26.00'
- ⑬ Δ = 12° 14' 37"
 A = 59.83'
 R = 280.00'
- ⑭ Δ = 12° 14' 37"
 A = 57.27'
 R = 268.00'

LEGEND

- UE = UTILITY EASEMENT
- OH & ME = OVERHANG & MAINTENANCE EASEMENT
- CME = CANAL MAINTENANCE EASEMENT
- LSBE = LANDSCAPE BUFFER EASEMENT
- LME = LAKE MAINTENANCE EASEMENT
- DE = DRAINAGE EASEMENT
- LWDD = LAKE WORTH DRAINAGE DISTRICT
- RD = RADIAL
- NR = NON-RADIAL
- R = RADIUS
- Δ = DELTA
- A = ARC
- CH = CHORD
- SP = SET PERMANENT CONTROL POINT
- CP = SET 4" x 4" CONCRETE PERMANENT REFERENCE MONUMENT
- PT = POINT OF TANGENCY OR POINT OF CURVATURE (NOT SET)
- AC = ACRES

NOT PLATTED 625.40'

SEE SHEET 5 OF 6
 MATCHLINE

SUBDIVISION - ROSSMOOR LAKES
 BOOK 73
 FLOOD ZONE 8/Anc-20
 ZONING RTU
 QUAD 35
 ZIP CODE 33463

0626-001

KESHAVARZ & ASSOCIATES, INC.
 THIS INSTRUMENT WAS PREPARED BY RICHARD P. BREITENBACH
 IN THE OFFICES OF KESHAVARZ & ASSOCIATES, INC.
 1280 N. CONGRESS AVENUE, SUITE 206
 WEST PALM BEACH, FLORIDA 33409
 (407) 689-8600 / FAX 689-7476

PALM CHASE LAKES A P.U.D. (P.B. 57, PGS. 18-20)

ROSSMOOR LAKES 73/141