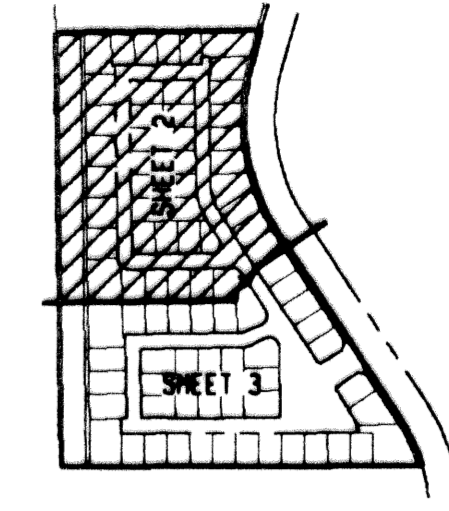


MAYFAIR AT WOODFIELD COUNTRY CLUB

IN PART OF SECTION 4, TOWNSHIP 47 SOUTH, RANGE 42 EAST
CITY OF BOCA RATON, PALM BEACH COUNTY, FLORIDA
SHEET NO. 2 OF 3

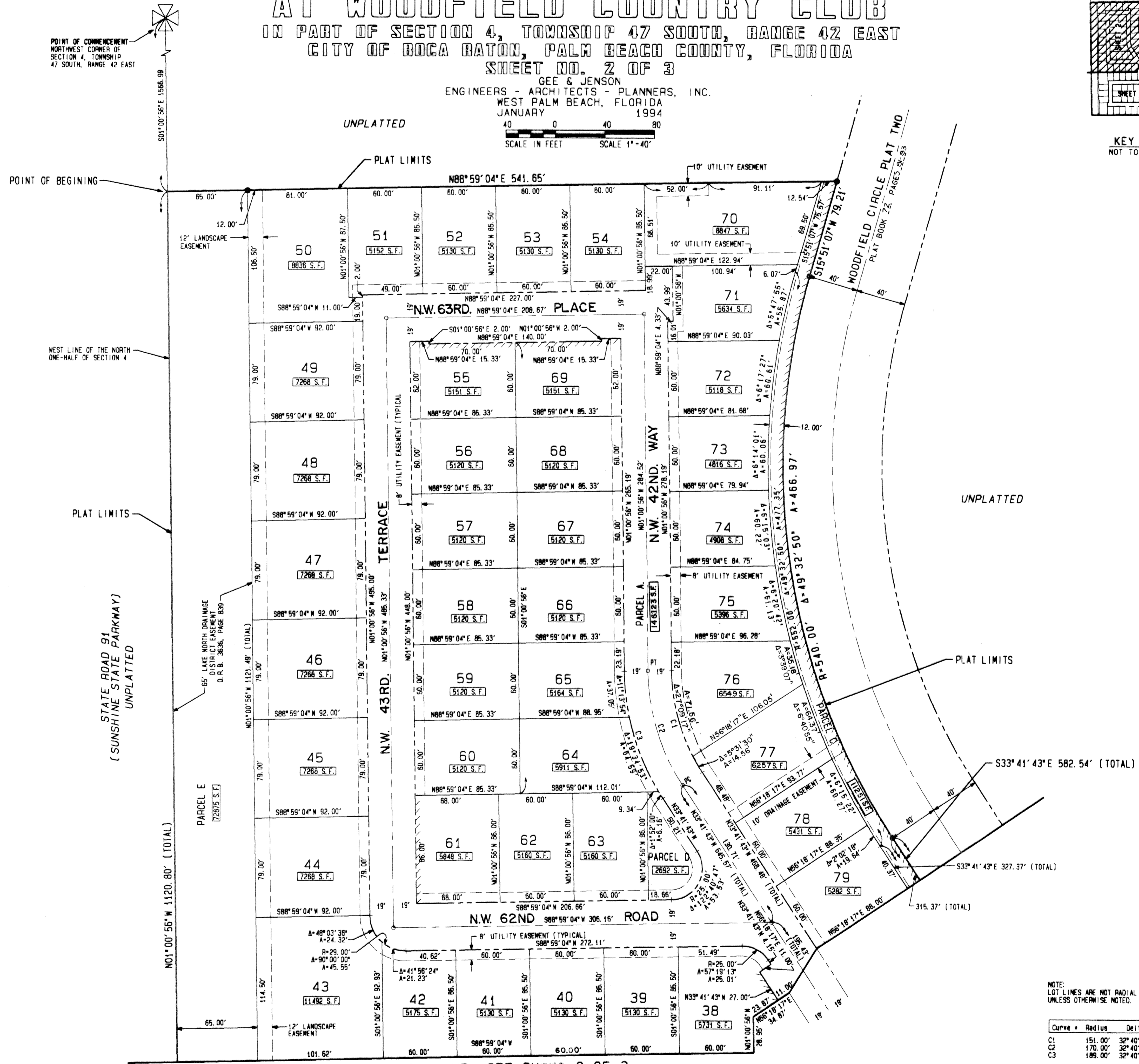
GEE & JENSON
ENGINEERS - ARCHITECTS - PLANNERS, INC.
WEST PALM BEACH, FLORIDA
JANUARY 1994

SCALE IN FEET SCALE 1" = 40'



KEY MAP
NOT TO SCALE

STATE OF FLORIDA
COUNTY OF PALM BEACH
This plat was filed for
record at _____ on this _____ day
of _____ 1994, and duly
recorded in Plat Book No. _____
on Pages _____ thru _____
DOROTHY WILKEN
Clerk Circuit Court
By _____ D. C.



POINT OF COMMENCEMENT
NORTHWEST CORNER OF
SECTION 4, TOWNSHIP
47 SOUTH, RANGE 42 EAST

POINT OF BEGINNING

WEST LINE OF THE NORTH
ONE-HALF OF SECTION 4

PLAT LIMITS

STATE ROAD 91
(SUNSHINE STATE PARKWAY)
UNPLATTED

N01°00'56"W 1120.80' (TOTAL)

PARCEL E
72875 S.F.

65' LAKE NORTH DRAINAGE
DISTRICT EASEMENT
D.R.B. 3636, PAGE 839

MATCH LINE SEE SHEET 3 OF 3

UNPLATTED

PLAT LIMITS

S33°41'43"E 582.54' (TOTAL)

S33°41'43"E 327.37' (TOTAL)

315.37' (TOTAL)

NOTE:
LOT LINES ARE NOT RADIAL
UNLESS OTHERWISE NOTED.

Curve	Radius	Delta	Length	Tangent	Chord/Brg
C1	151.00'	32°40'47"	86.12'	44.27'	64.96' N17-21-19.4W
C2	170.00'	32°40'47"	96.96'	49.84'	95.65' N17-21-19.4W
C3	189.00'	32°40'47"	107.80'	55.41'	106.34' N17-21-19.4W

SUBDIVISION * MAYFAIR AT WOODFIELD
COUNTRY CLUB
BOOK 73 PAGE 150
FLOOD MAP *
QUAD * ZONING
S.S. ZIP CODE
PUD NAME C130CA
4/47/94

COMPUTED D. BACHOR
DRAWN D. BACHOR
CHECKED
APPROVED
JOB NO. 93-330