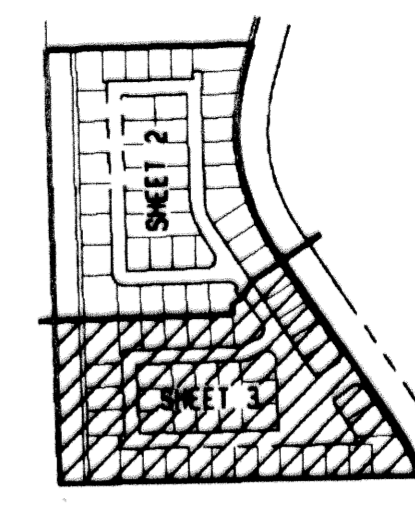
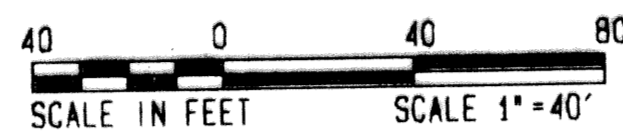


# MAYFAIR AT WOODFIELD COUNTRY CLUB

IN PART OF SECTION 4, TOWNSHIP 47 SOUTH, RANGE 42 EAST  
CITY OF BOCA RATON, PALM BEACH COUNTY, FLORIDA  
SHEET NO. 3 OF 3

GEE & JENSON  
ENGINEERS - ARCHITECTS - PLANNERS, INC.  
WEST PALM BEACH, FLORIDA  
JANUARY 1994



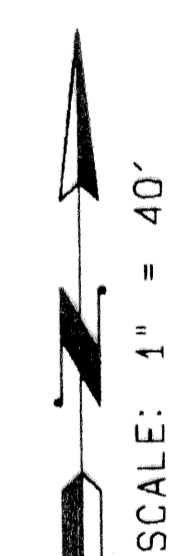
KEY MAP  
NOT TO SCALE

151

STATE OF FLORIDA  
COUNTY OF PALM BEACH  
This plat was filed for  
record at \_\_\_\_\_ M this day  
of \_\_\_\_\_ 1994, and duly  
recorded in Plat Book No. \_\_\_\_\_  
on Pages \_\_\_\_\_ thru \_\_\_\_\_.

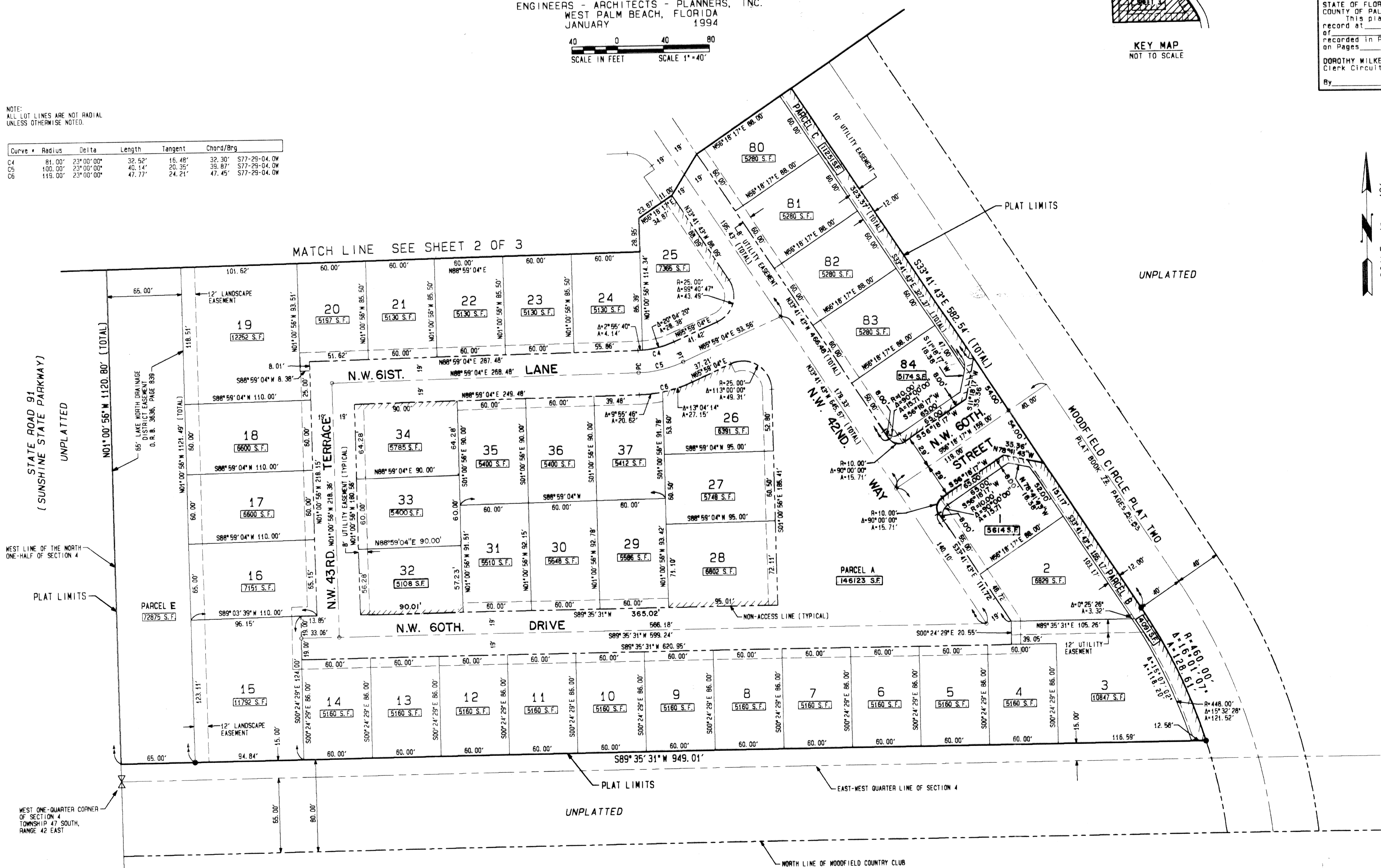
DOROTHY WILKEN  
Clerk Circuit Court

By \_\_\_\_\_ D. C.



NOTE:  
ALL LOT LINES ARE NOT RADIAL  
UNLESS OTHERWISE NOTED.

Curve	Radius	Delta	Length	Tangent	Chord/Brg
C4	81.00'	23°00'00"	32.52'	16.48'	S77-29-04.0W
C5	100.00'	23°00'00"	40.14'	20.35'	S77-29-04.0W
C6	119.00'	23°00'00"	47.77'	24.21'	S77-29-04.0W



SUBDIVISION: MAYFAIR AT WOODFIELD COUNTRY CLUB  
 BOOK: 73  
 FLOOD ZONE: \_\_\_\_\_  
 QUAD: \_\_\_\_\_  
 S.E. ZIP CODE: \_\_\_\_\_  
 PLAT NAME: C | BOCA  
 SHEET NO: 151

COMPUTED: D. BACHOR  
 DRAWN: D. BACHOR  
 CHECKED: \_\_\_\_\_  
 APPROVED: \_\_\_\_\_  
 JOB NO.: 93-330

WOODFIELD COUNTRY CLUB  
PLAT BOOK 54, PAGE 79