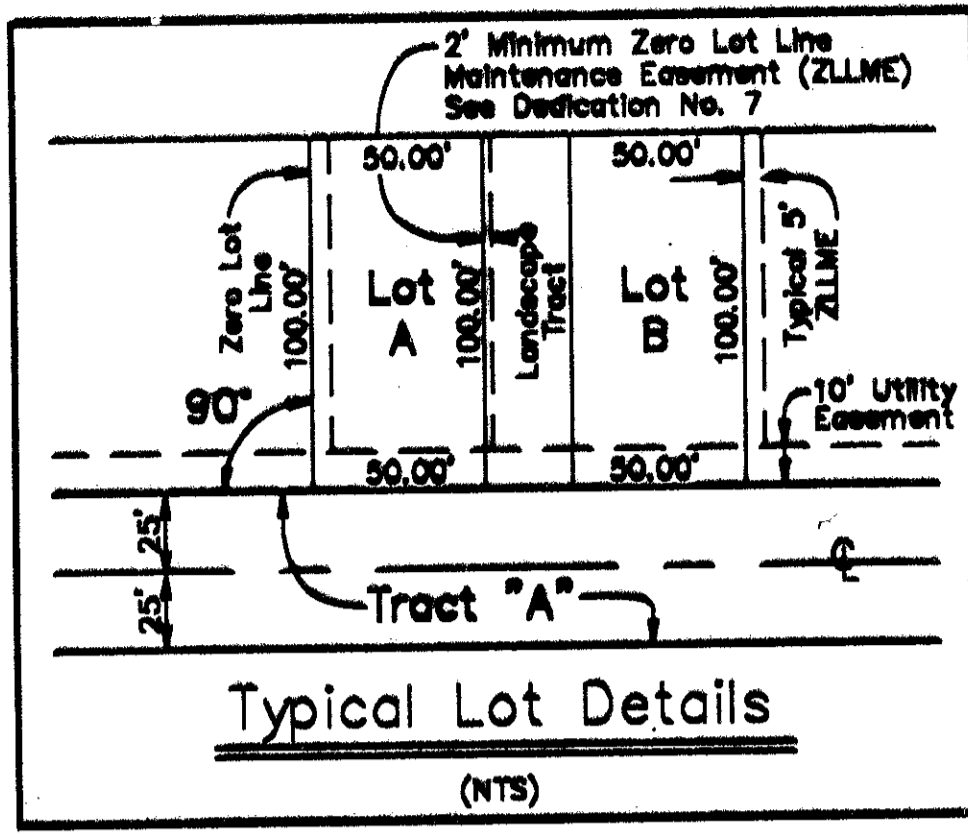


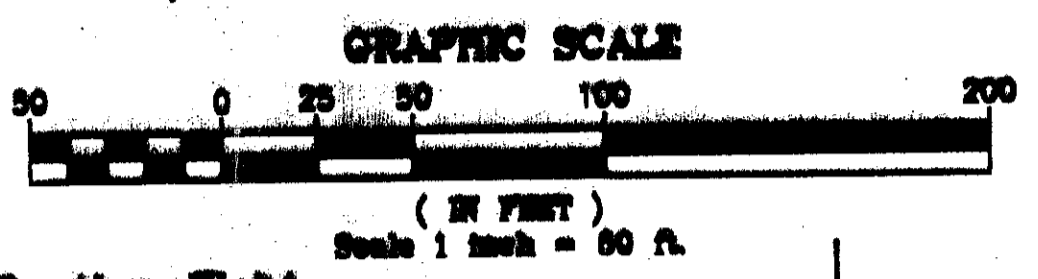
# Sterling Bridge

Situate in Sections 29, 30, 31 and 32, Township 47 South, Range 42 East  
 Being a replat of all of Tracts 86, 87, 88, and the west half of Tract 89, Block  
 80, a portion of Tracts 5, 6, 7, and 8, Block 83, and the adjacent abandoned  
 roadways, Palm Beach Farms Company Plat No. 3 as recorded in Plat Book 2,  
 Page 45 through 54, inclusive, Public Records of Palm Beach County, Florida

STATE OF FLORIDA 38  
 COUNTY OF PALM BEACH  
 This plat filed for record at \_\_\_\_\_  
 this \_\_\_\_\_ day of \_\_\_\_\_  
 19\_\_\_\_ and duly recorded in Plat  
 Book \_\_\_\_\_ on page \_\_\_\_\_  
 DOROTHY H. WALKER, CLERK of the  
 Circuit Court.  
 By: \_\_\_\_\_ D.C.



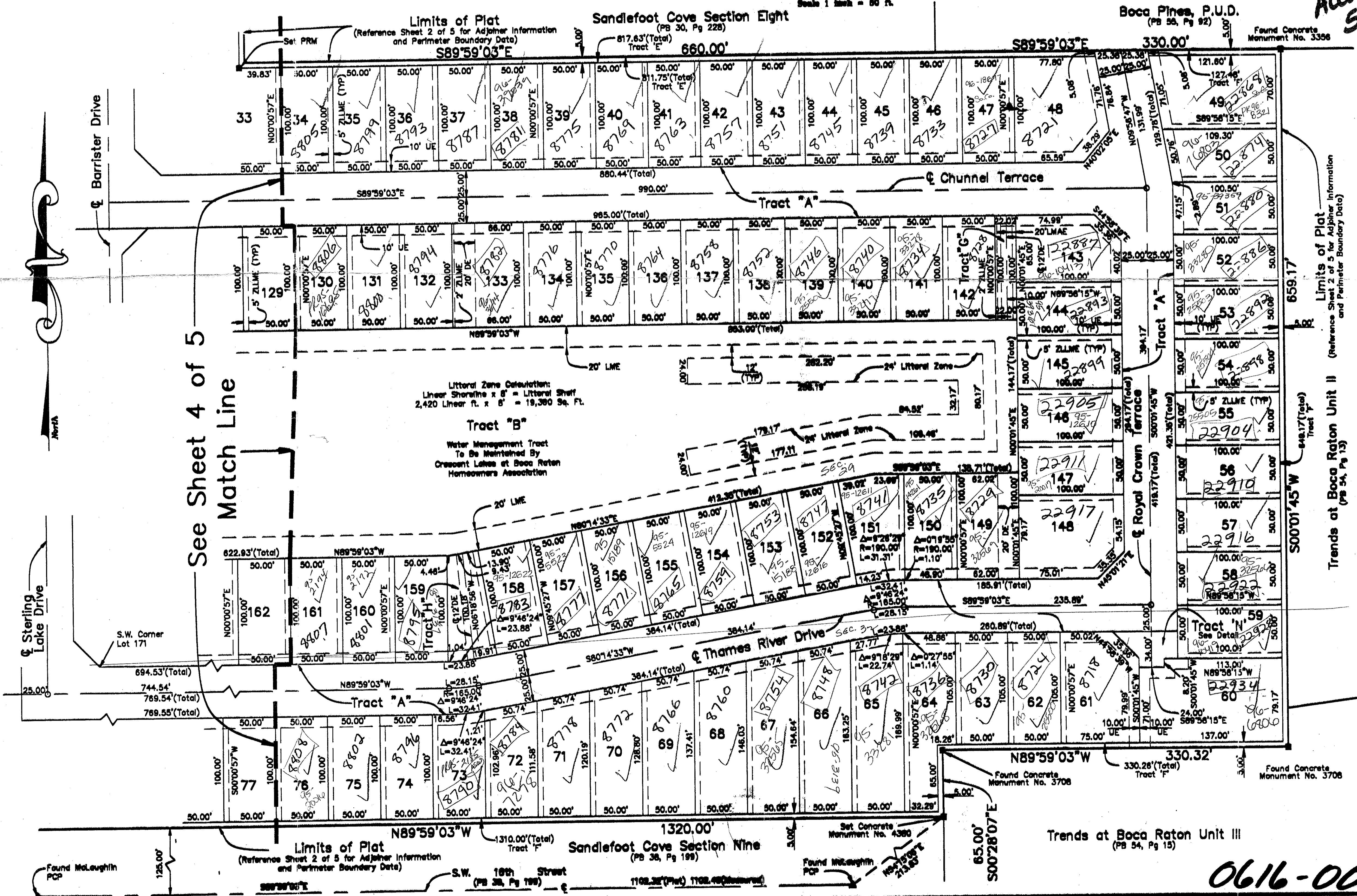
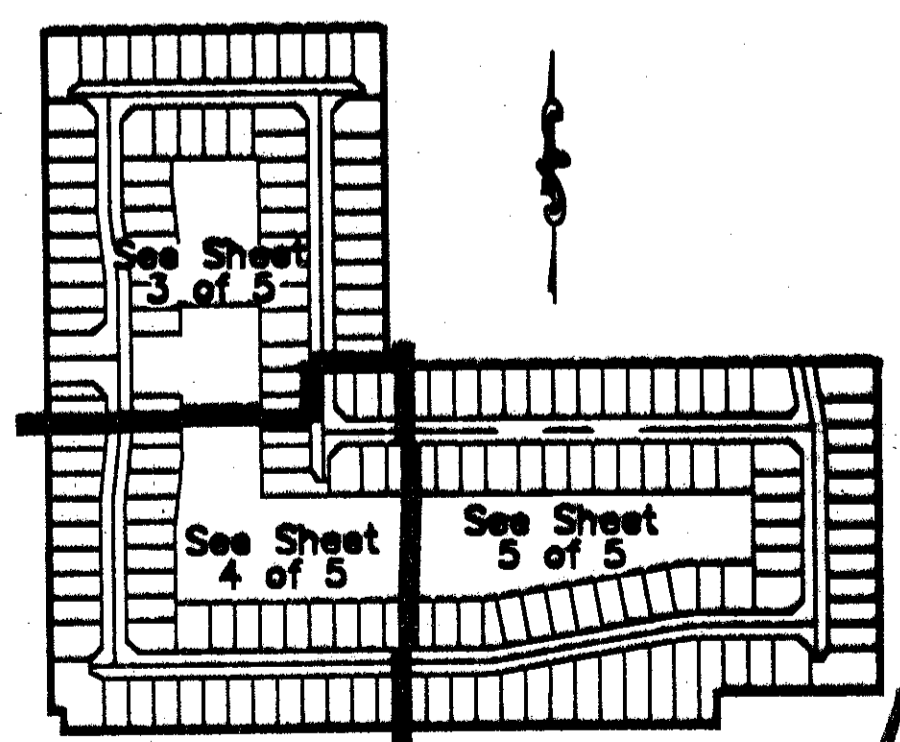
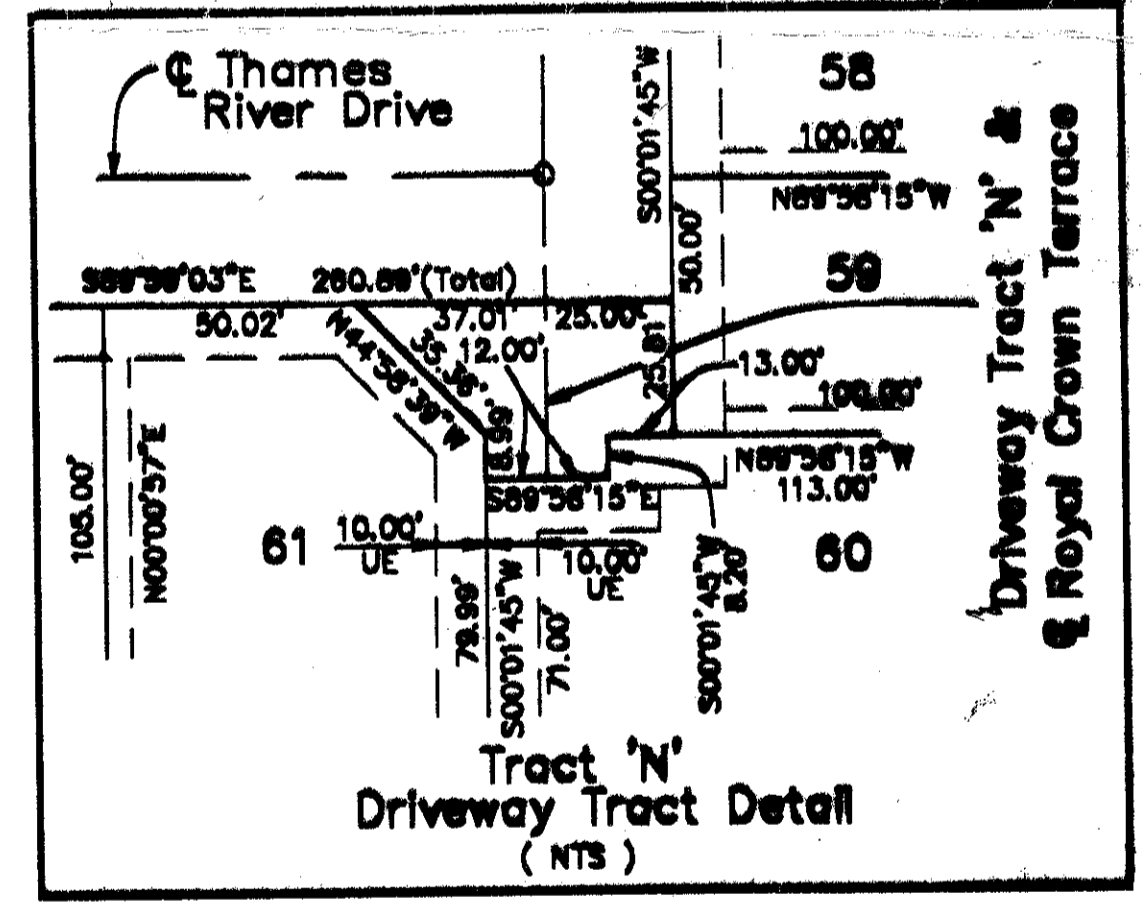
August, 1994



Sheet 5 of 5

PET. 91-45  
 ALLOC. #0001  
 5/3/31M

- Map Legend :
- = Permanent Control Point
  - = Permanent Reference Monument
  - = Centerline
  - Δ = Central Angle (Delta)
  - DE = Drainage Easement
  - DT = Driveway Tract
  - FL = Feet
  - L = Arc Length
  - LAE = Limited Access Easement
  - LME = Lake Maintenance Easement
  - LMAE = Lake Maintenance Access Easement
  - ORB = Official Record Book
  - PB = Plat Book
  - PC = Point of Curvature
  - PCP = Permanent Reference Point
  - Pg = Page
  - PRM = Permanent Reference Monument
  - R = Radius Length
  - Typ = Typical
  - UE = Utility Easement
  - ZLLME = Zero Lot Line Maintenance Easement



See Sheet 4 of 5  
 Match Line

SUBDIVISION - Sterling Bridge  
 BOOK 73 PAGE 167  
 FLOOD ZONE AU-1 FLOOD MAP #24003  
 ZONING RS  
 QUAD # 54  
 SE 91-45  
 ZIP CODE 33433  
 PUD NAME SCUL  
 23-27-47-22  
 TAZ-789

Atlantic - Caribbean Mapping, Inc.  
 PROFESSIONAL LAND SURVEYORS AND MAPPERS  
 357 Liana Drive  
 West Palm Beach, Florida 33415  
 (407) 687-5898 - Fax (407) 471-6782

Project No. 93445 Dwg No. 445\_P005 Plat of Sterling Bridge

0616-002