

RIVER BRIDGE P.U.D. PARCEL 3A PLAT 2

BEING A REPLAT OF A PORTION OF PARCEL 3A
RIVER BRIDGE P.U.D. PHASE 3B, (P.B. 70, PGS. 178 AND 179)

LYING IN SECTION 15, TOWNSHIP 44 SOUTH, RANGE 42 EAST,
CITY OF GREENACRES, PALM BEACH COUNTY, FLORIDA.

NOVEMBER 1994

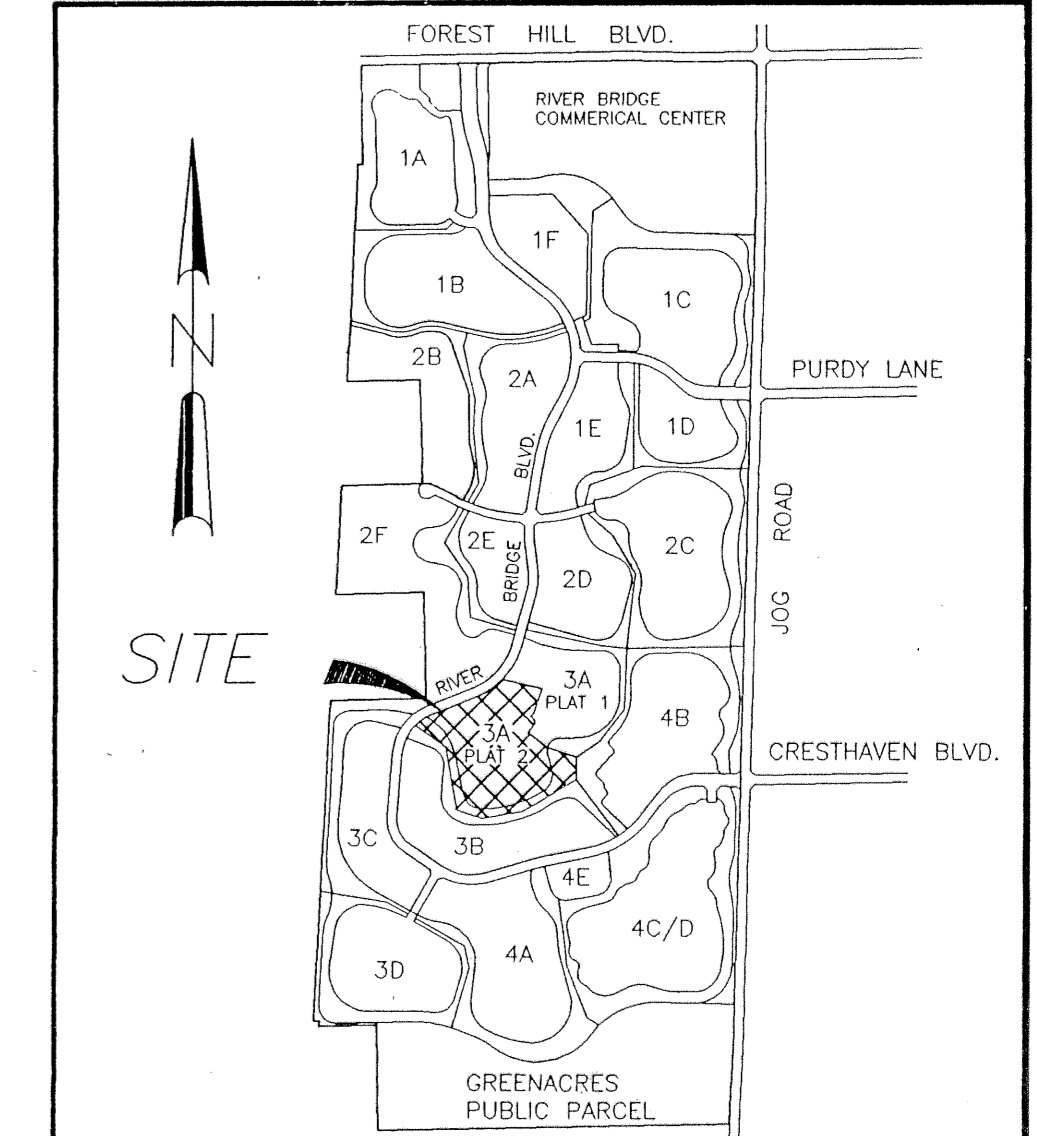
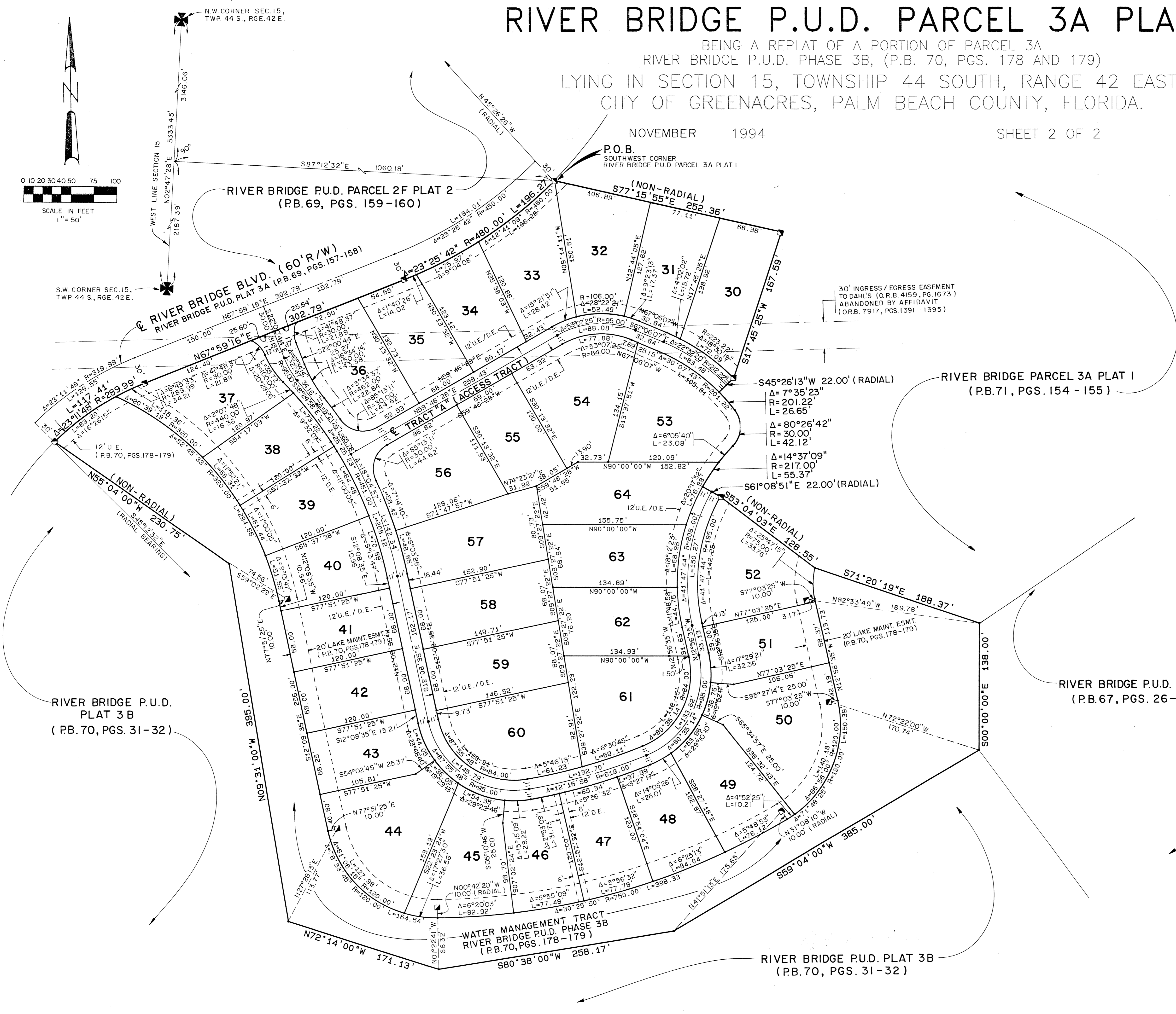
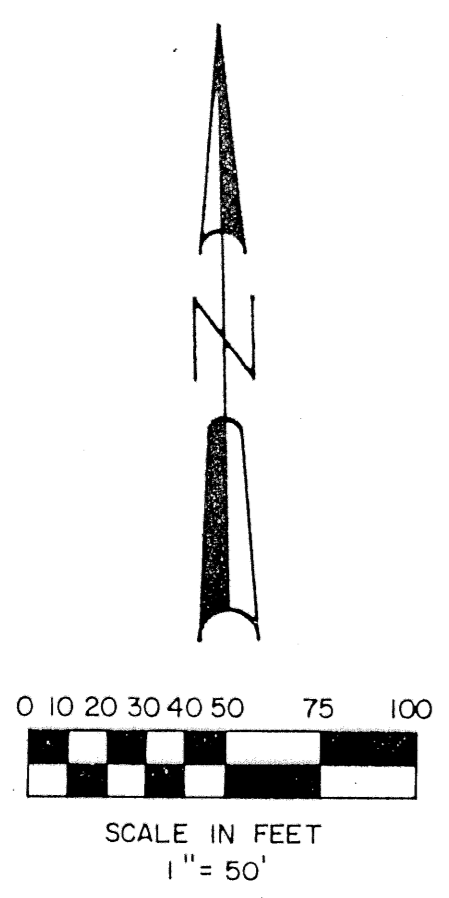
SHEET 2 OF 2

8

STATE OF FLORIDA
COUNTY OF PALM BEACH

This plat was filed for
record at _____ this _____ 1994,
day of _____
and duly recorded in
Plat Book No. _____ on
Pages _____ thru _____

DOROTHY H. WILKEN
Clerk Circuit Court
By: _____



P.U.D. LOCATION MAP N.T.S.

ABBREVIATION LEGEND

| | |
|--------|------------------------------|
| C/CALC | CALCULATED DIMENSION |
| D.E. | DRAINAGE EASEMENT |
| DISC | BRASS DISC |
| FD/FND | FOUND |
| L.B. | LICENSED BUSINESS |
| L.S. | LAND SURVEYOR |
| N.R. | NON-RADIAL |
| O.R.B. | OFFICIAL RECORD BOOK |
| P/PLAT | PREVIOUSLY PLATTED |
| P.B. | PLAT BOOK |
| P.C.P. | PERMANENT CONTROL POINT |
| P.L.S. | PROFESSIONAL LAND SURVEYOR |
| P.O.B. | POINT OF BEGINNING |
| P.O.C. | POINT OF COMMENCEMENT |
| P.R.M. | PERMANENT REFERENCE MONUMENT |
| PC. | POINT OF CURVATURE |
| PK | PK BRAND NAIL |
| PT. | POINT OF TANGENCY |
| R/REC | RECORD DATA |
| R/W | RIGHT-OF-WAY |
| REF. | REFERENCE |
| RGE. | RANGE |
| SEC. | SECTION |
| TWP. | TOWNSHIP |
| TYP. | TYPICAL |
| U.E. | UTILITY EASEMENT |

subdivision River Bridge Parcel 3A
BOOK 73
FLOOR PLANS - 8
QUAD -
SE
PUD NAME C/Greenacres
CODE -

PETSCHÉ & ASSOCIATES, INC.
Professional Engineers - Land Surveyors - Development Consultants - Planning Services
2581 Metairie Boulevard, Suite 5, West Palm Beach, Florida 33407 (407) 640-3800
6799 Overseas Highway, Suite 7, Marathon, Florida 33050 (305) 743-5788

RIVER BRIDGE P.U.D. PARCEL 3A PLAT 2
SECTION 15, TOWNSHIP 44S., RANGE 42E.
CITY OF GREENACRES, FLORIDA
Drawn by: D.W.O./M.E.H. Date: SEPT. 1994
Designed by: R. HAGLER Checked by: R. HAGLER
SCALE: 1" = 50'
JOB NUMBER: 93015-1
SHEET OF: 2 OF 2