

COVENTRY AT WOODFIELD COUNTRY CLUB

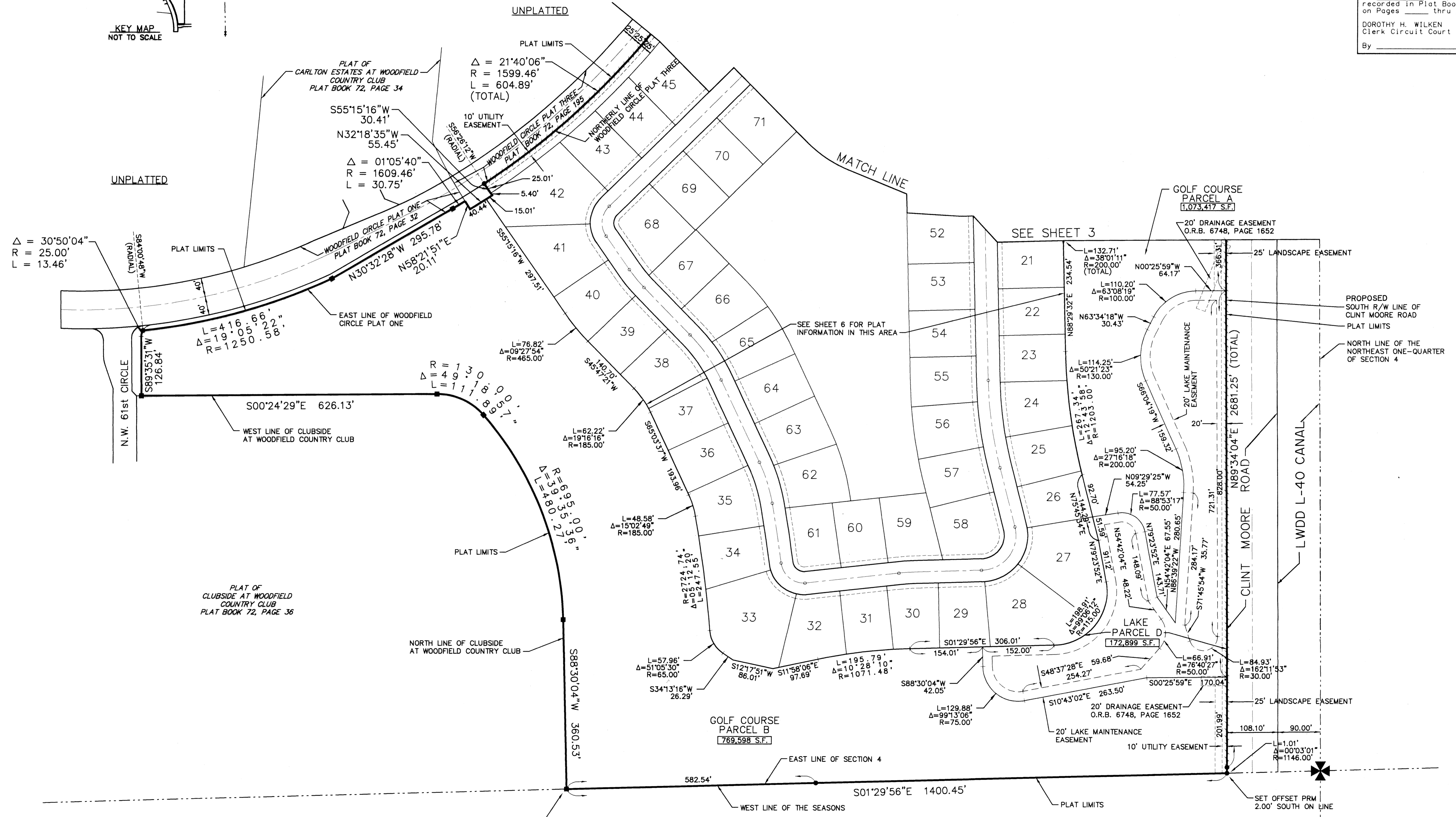
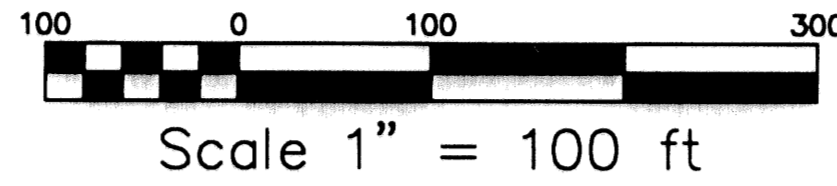
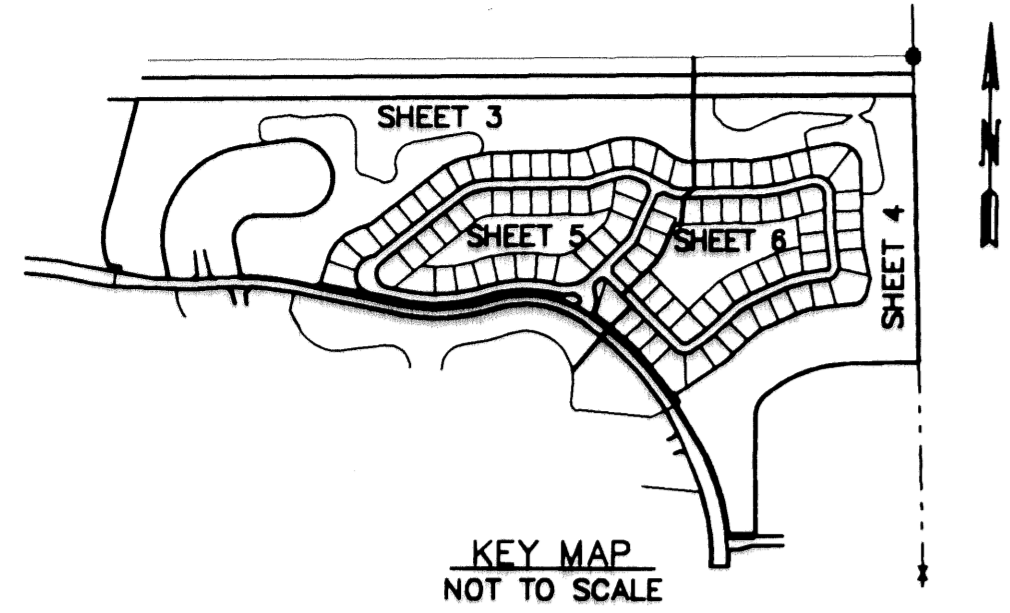
IN PART OF SECTION 4, TOWNSHIP 47 SOUTH, RANGE 42 EAST

CITY OF BOCA RATON, FLORIDA

SHEET NO. 4 OF 6

GEE & JENSON
ENGINEERS - ARCHITECTS - PLANNERS, INC.
WEST PALM BEACH, FLORIDA
JANUARY 1994

STATE OF FLORIDA
COUNTY OF PALM BEACH
This plat was filed for
record at _____ M. this _____ day
of _____ 1994, and duly
recorded in Plat Book No. _____
on Pages _____ thru _____
DOROTHY H. WILKEN
Clerk Circuit Court
By _____ D. C.



SUBDIVISION Coventry at Woodfield
BOOK 74
FLOOD ZONE
QUAD
SE
PUD NAME C/ Boca Raton

COMPUTED _____
DRAWN _____
CHECKED _____
APPROVED _____
JOB NO. 93-330

THIS INSTRUMENT PREPARED BY:
JAMES A. DAVIS, PLS
FOR GEE & JENSON, ENGINEERS - ARCHITECTS - PLANNERS, INC.
ONE HARVARD CIRCLE
WEST PALM BEACH, FLORIDA 33409-1923

POINT OF BEGINNING
NORTHEAST CORNER OF
CLUBSIDE AT WOODFIELD
COUNTRY CLUB

SEASONS
PLAT BOOK 57, PAGE 161