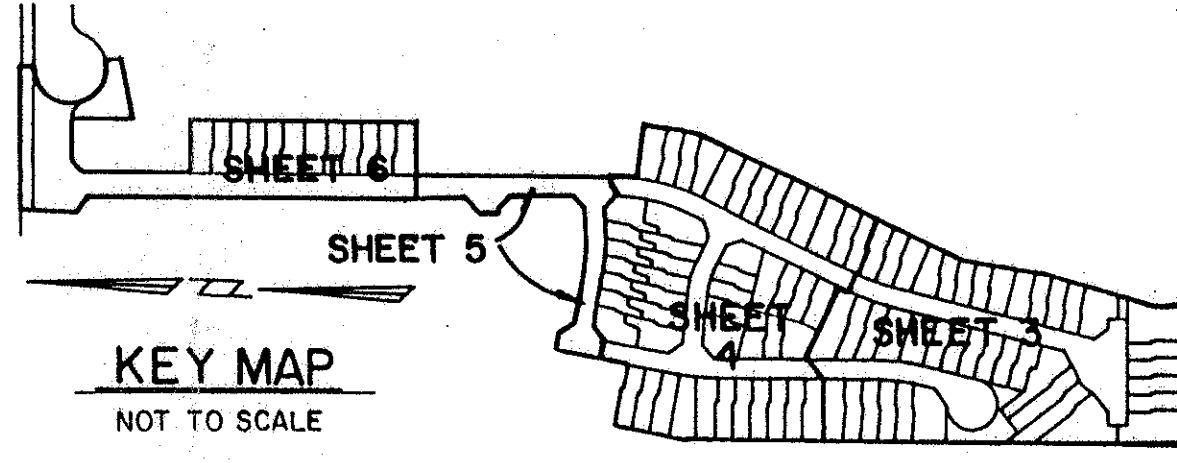


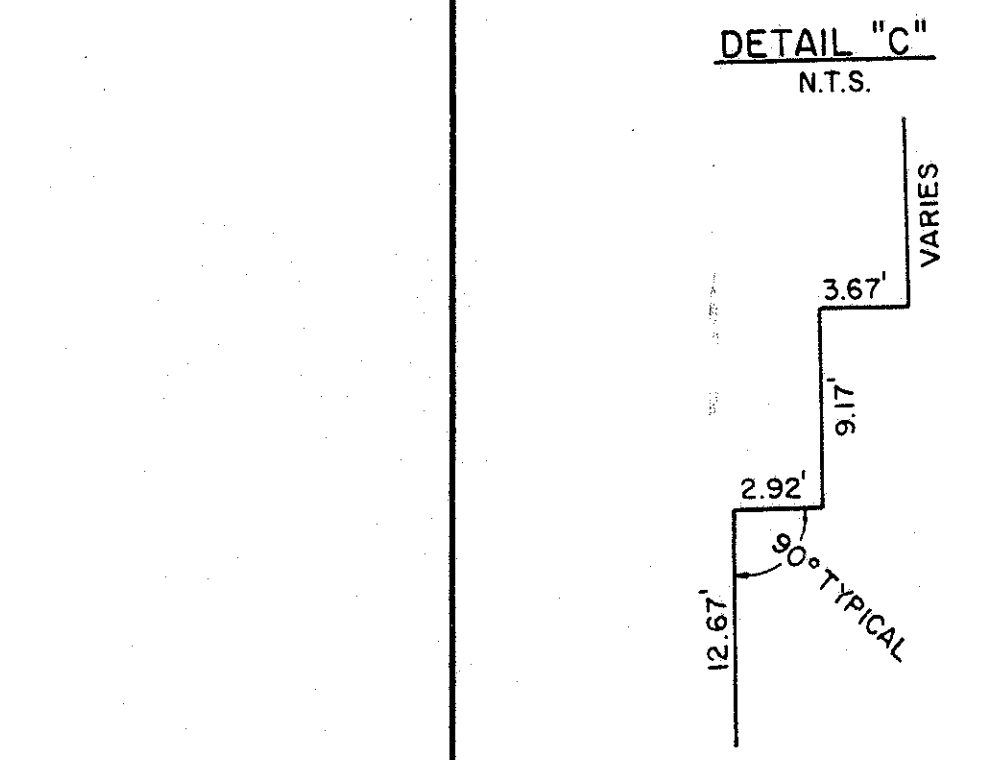
# LAKE CHARLESTON TRACT "G" PLAT I

A PART OF LAKE CHARLESTON PLANNED UNIT DEVELOPMENT

BEING A REPLAT OF A PORTION OF TRACT G OF LAKE CHARLESTON PLAT NO. 3 AS RECORDED IN PLAT BOOK 62, PAGES 55 THRU 68, PUBLIC RECORDS OF PALM BEACH COUNTY, FLORIDA LYING IN SECTION 9, TOWNSHIP 45 SOUTH, RANGE 42 EAST, PALM BEACH COUNTY, FLORIDA  
SHEET 4 OF 6  
JUNE, 1994



STATE OF FLORIDA  
COUNTY OF PALM BEACH  
This Plat was filed for record at \_\_\_\_\_  
M. this \_\_\_\_\_ day of \_\_\_\_\_ 19\_\_\_\_  
and duly recorded in Plat Book No. \_\_\_\_\_  
on Page \_\_\_\_\_  
Dorothy H. Wilken, Clerk of the Circuit Court  
By \_\_\_\_\_ D.C.



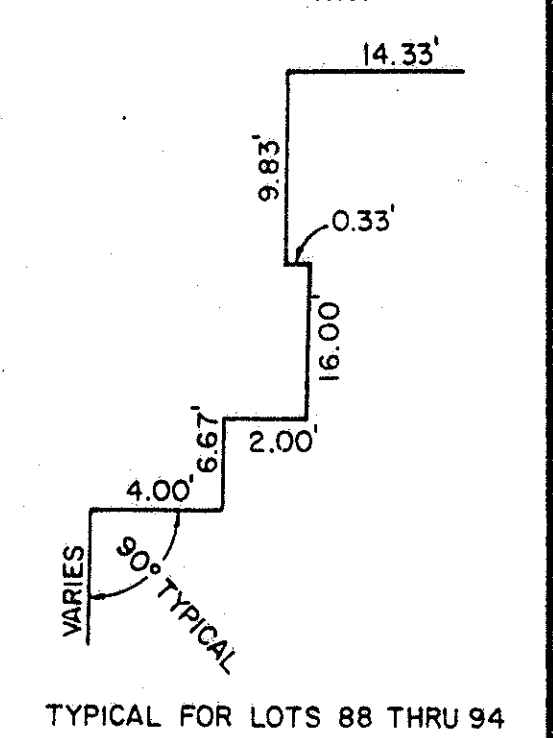
TYPICAL FOR LOTS 95 THRU 101

A PORTION OF  
TRACT "G"  
LAKE CHARLESTON PLAT NO. 3  
(PLAT BOOK 62, PAGES 55 - 68)

PET. 86-96  
ALLOC. #0001  
5/2/94

TYPICAL FOR LOTS 17 THRU 22, LOTS 60 THRU 63 & LOTS 78 THRU 87

DETAIL "B" N.T.S.



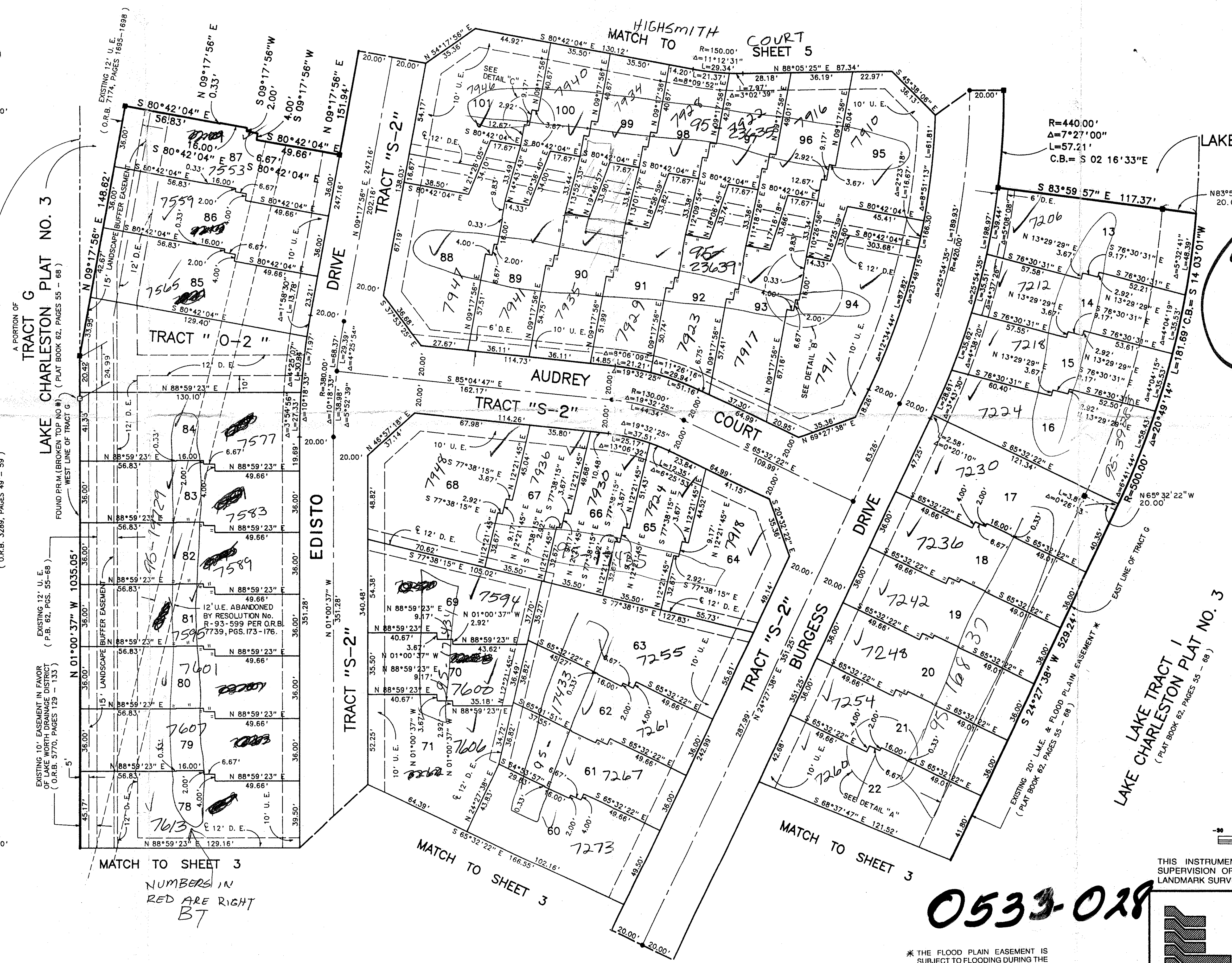
TYPICAL FOR LOTS 88 THRU 94

Subdivision # PLAT I  
BOOK 74 PAGE 35  
FLOOD ZONE B FLOOD MAP # 18 SA  
QUAD # 49 ZONING KTS  
SE 86-96 ZIP CODE 33437  
PUD NAME  
LAKE CHARLESTON TRACT "G"

TAZ-439

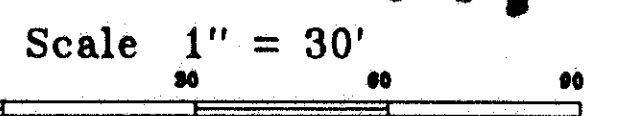
FLORIDA'S TURNPIKE ( SUNSHINE STATE PARKWAY )

LAKE WORTH DRAINAGE DISTRICT E-2-E CANAL  
( O.R.B. 3289, PAGES 48 - 59 )



R=440.00'  
Δ=7°27'00"  
L=57.21'  
C.B.= S 02 16'33"E

LAKE TRACT I  
LAKE CHARLESTON PLAT NO. 3  
( PLAT BOOK 62, PAGES 55 - 68 )



THIS INSTRUMENT WAS PREPARED BY LESLIE BISPOTT UNDER THE SUPERVISION OF CRAIG S. PUSEY, PROFESSIONAL LAND SURVEYOR OF LANDMARK SURVEYING & MAPPING, INC.

Landmark Surveying & Mapping Inc.  
1850 FOREST HILL BOULEVARD  
PH. (407)433-5405 SUITE 100 W.P.B. FLORIDA

LAKE CHARLESTON TRACT "G"  
PLAT I

0533-028

\* THE FLOOD PLAIN EASEMENT IS SUBJECT TO FLOODING DURING THE THREE YEAR TWENTY-FOUR HOUR RAINFALL EVENT.

MATCH TO SHEET 3  
NUMBERS IN RED ARE RIGHT BT

MATCH TO SHEET 3

MATCH TO SHEET 3