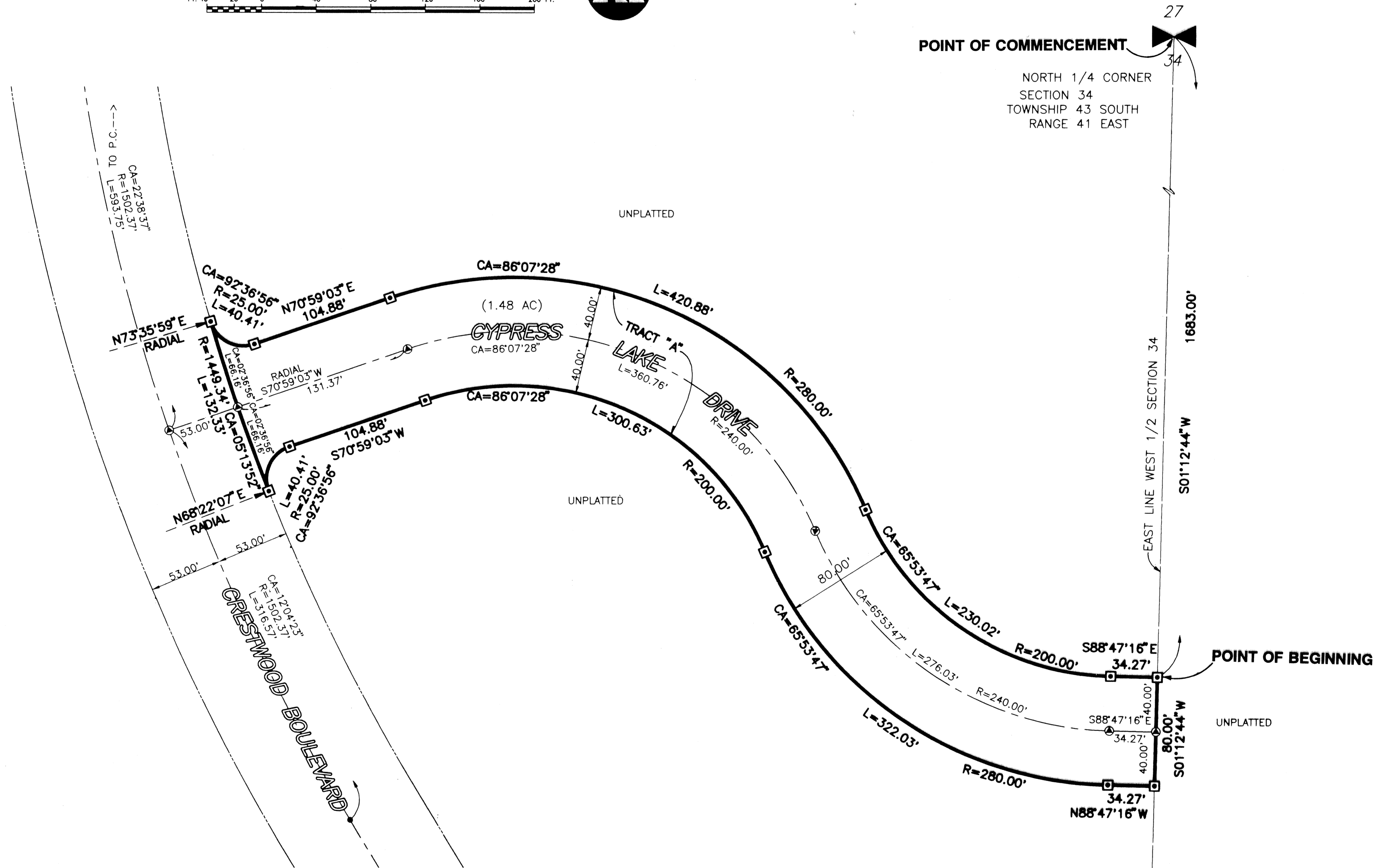
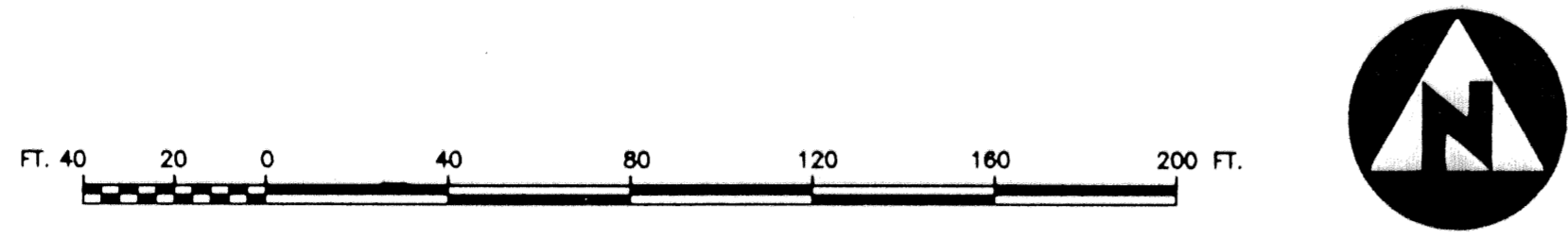


CYPRESS LAKE DRIVE

LYING IN SECTION 34, TOWNSHIP 43 SOUTH, RANGE 41 EAST, VILLAGE OF ROYAL PALM BEACH, PALM BEACH COUNTY, FLORIDA



- SURVEYOR'S NOTES:**
- BEARINGS SHOWN HEREON ARE BASED ON AND RELATIVE TO THE ASSUMED BEARING OF SOUTH 01°12'44" WEST, ALONG THE WEST LINE OF THE NORTHEAST QUARTER OF SECTION 34, TOWNSHIP 43 SOUTH, RANGE 41 EAST, VILLAGE OF ROYAL PALM BEACH, PALM BEACH COUNTY, FLORIDA.
 - ☐ DENOTES A SET #2424 PERMANENT REFERENCE MONUMENT (P.R.M.).
 - ⊙ DENOTES A SET #2424 PERMANENT CONTROL POINT (P.C.P.).
 - LINES WHICH INTERSECT CURVES ARE NON-RADIAL UNLESS OTHERWISE NOTED.
 - IN THOSE INSTANCES WHERE UTILITY/DRAINAGE STRUCTURES ARE CONSTRUCTED IN CONFLICT WITH THE PLATTED PERMANENT CONTROL POINTS (P.C.P.) POSITION, STRADDLERS MONUMENTED AS PERMANENT CONTROL POINTS WILL BE SET TO REFERENCE THE PLATTED PERMANENT CONTROL POINT POSITIONS.

This instrument was prepared by Wm. R. Van Campen, R.L.S., in and for the offices of Bench Mark Land Surveying & Mapping, Inc., 4152 West Blue Heron Boulevard, Suite 121, Riviera Beach, Florida

BENCH MARK
Land Surveying and Mapping, Inc.
4152 West Blue Heron Blvd., Suite 121, Riviera Beach, FL 33404
Fax: (407) 844-9828 Phone: (407) 844-2162

RECORD PLAT
CYPRESS LAKE DRIVE

DRWN	FB	DATE 11-09-94	WO.#	P3
CKD	FILE	SCALE	SHEET	2

SUBDIVISION * Cypress Lake Drive
BOOK 174 PAGE 47
FLOOD ZONE -
ZONING -
SEAL -
PUB. NAME - Royal Palm Beach