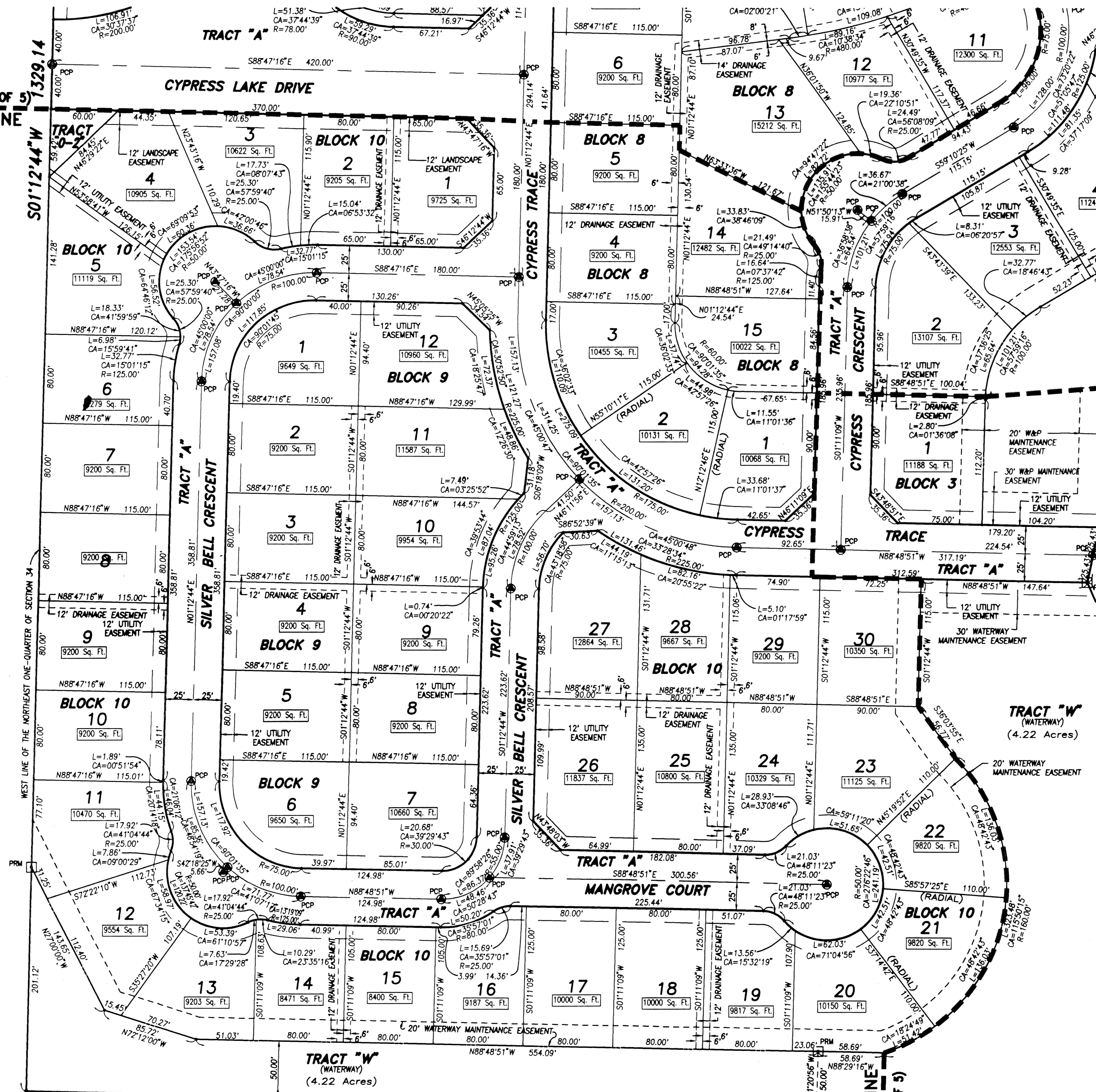
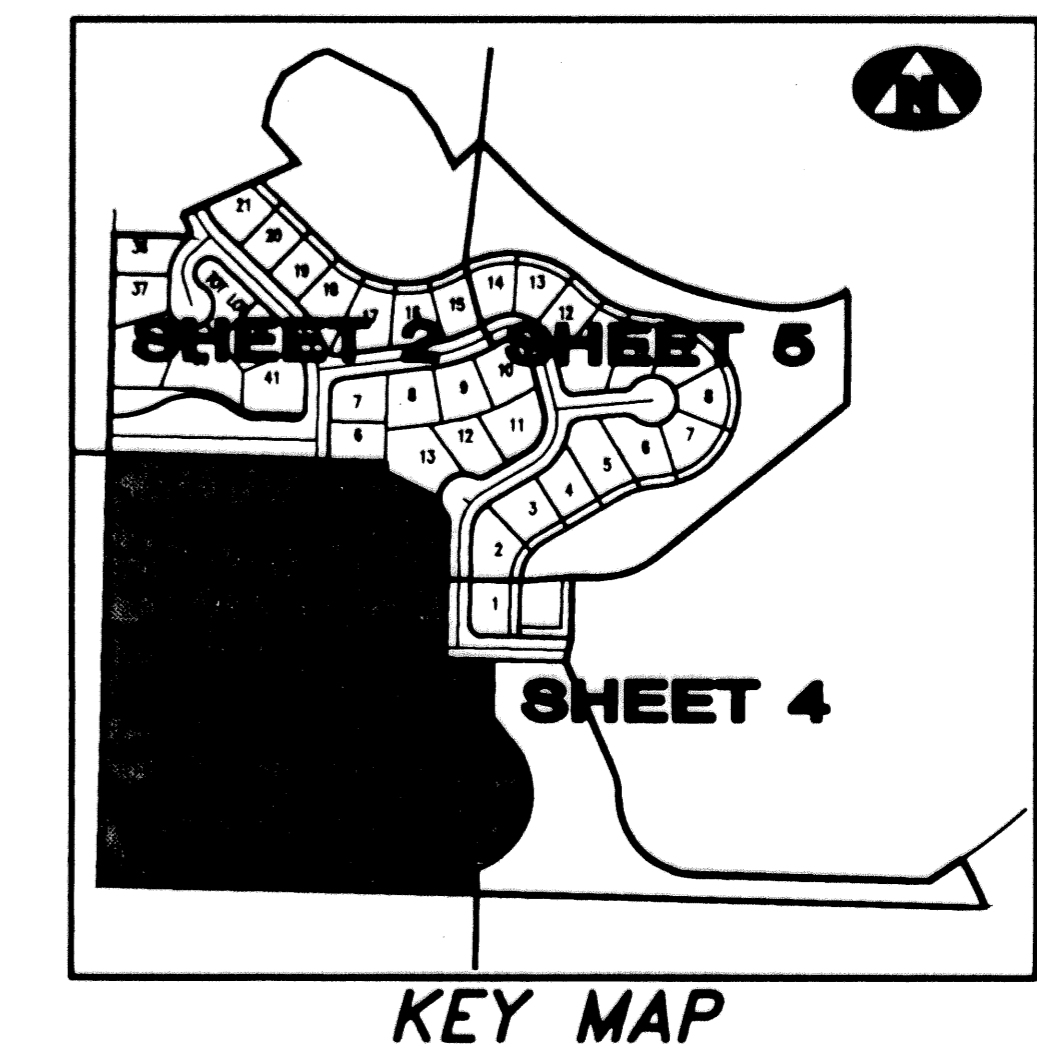
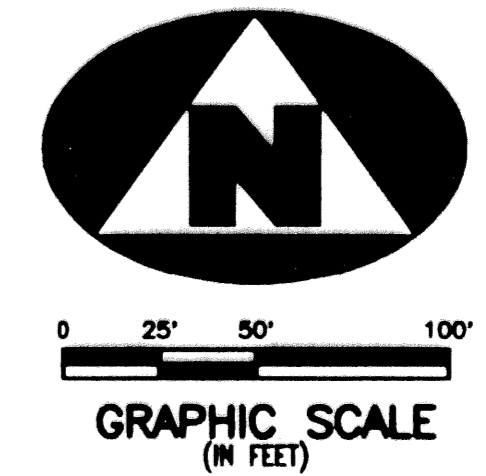


CYPRESS HEAD UNIT 2 PLAT 1

LYING IN SECTION 34, TOWNSHIP 43 SOUTH, RANGE 41 EAST, VILLAGE OF ROYAL PALM BEACH, PALM BEACH COUNTY, FLORIDA



(SEE SHEET 2 OF 5) MATCH LINE

- NOT PLATTED -

MATCH LINE (SEE SHEET 4 OF 5)

SUBDIVISION: Cypress Head Unit 2
BLOCK: 74
FLOOD ZONE: FLOOD HAZARD
QUAD: 20N08E
SE: 1
PUD NAME: W/Royal Palm Bch

- SURVEYOR'S NOTES AND LEGEND:**
- BEARINGS SHOWN OR STATED HEREON, ARE BASED ON, OR ARE RELATIVE TO THE BEARING OF SOUTH 01°12'44" WEST ALONG THE WEST LINE OF THE NORTHEAST ONE-QUARTER OF SECTION 34, TOWNSHIP 43 SOUTH, RANGE 41 EAST, PALM BEACH COUNTY, FLORIDA.
 - IN THOSE INSTANCES WHERE UTILITY/DRAINAGE STRUCTURES ARE CONSTRUCTED IN CONFLICT WITH THE PLATTED PERMANENT CONTROL POINTS (P.C.P.) POSITION, STRADDLERS MONUMENTED AS PERMANENT CONTROL POINTS WILL BE SET TO REFERENCE THE PLATTED P.C.P. POSITION.
 - LINE INTERSECTING CURVES ARE NON RADIAL UNLESS OTHERWISE NOTED.
 - W&P DENOTES WATERWAY AND PRESERVE AREA.
 - SQ. FT. DENOTES SQUARE FEET
 - C/L DENOTES A CENTERLINE
 - PRM DENOTES A SET #2424 PERMANENT REFERENCE MONUMENT (P.R.M.)
 - PCP DENOTES A SET #2424 PERMANENT CONTROL POINT (P.C.P.)

This instrument was prepared by Wm. R. Van Campen, R.L.S., in and for the offices of Bench Mark Land Surveying & Mapping, Inc., 4152 West Blue Heron Boulevard, Suite 121, Riviera Beach, Florida

BENCH MARK
Land Surveying and Mapping, Inc.
4152 West Blue Heron Blvd., Suite 121, Riviera Beach, FL 33404
Fax (407) 844-9659 Phone (407) 848-2102

RECORD PLAT		CYPRESS HEAD UNIT 2 PLAT 1	
DWN	DM	FB	DATE 11/01/94
CKD	FILE	P3-A1.dwg	SCALE 1" = 50'
WO.#	P3	SHEET 3 OF 5	