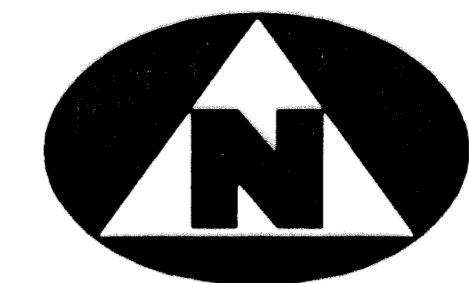
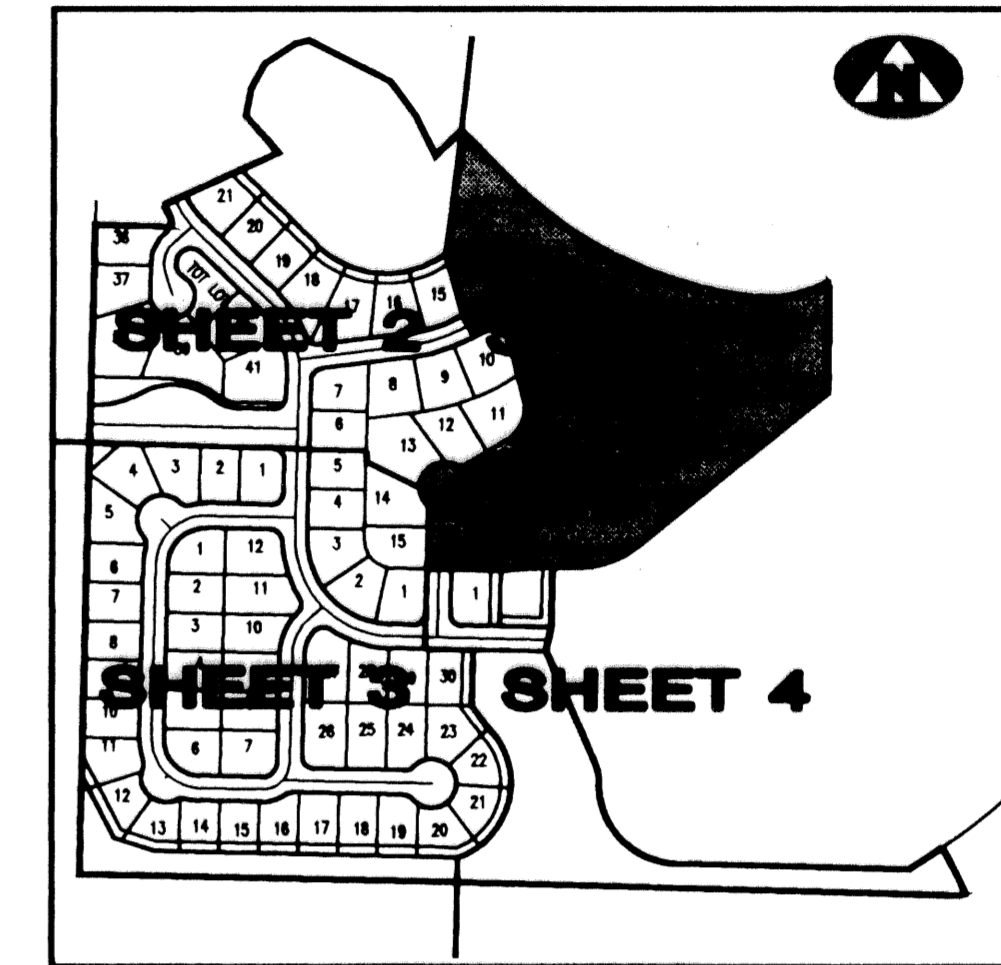


# CYPRESS HEAD UNIT 2 PLAT 1

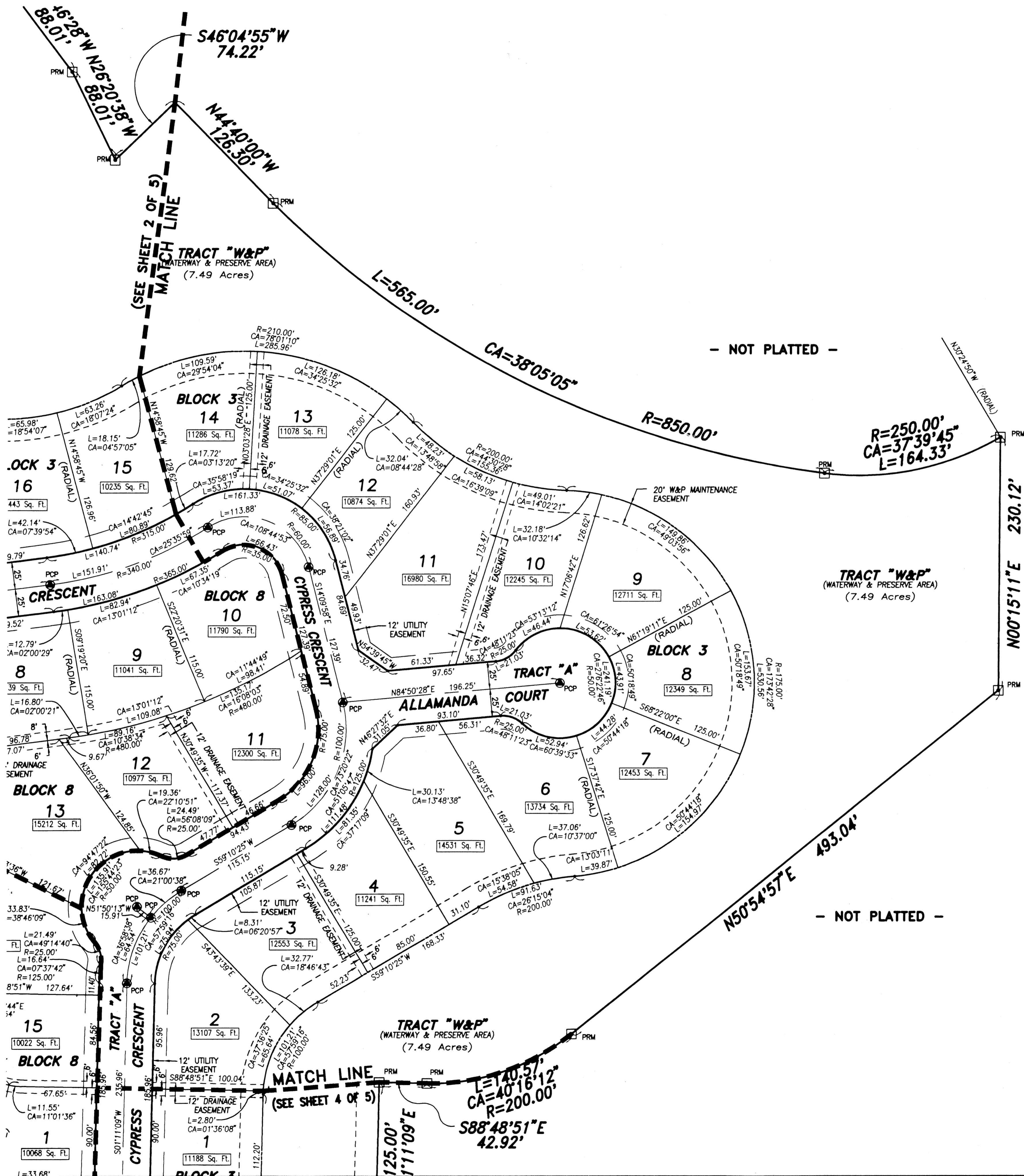
LYING IN SECTION 34, TOWNSHIP 43 SOUTH, RANGE 41 EAST, VILLAGE OF ROYAL PALM BEACH, PALM BEACH COUNTY, FLORIDA



0 25' 50' 100'  
GRAPHIC SCALE  
(IN FEET)



KEY MAP



**SURVEYOR'S NOTES AND LEGEND:**

- BEARINGS SHOWN OR STATED HEREON, ARE BASED ON, OR ARE RELATIVE TO THE BEARING OF SOUTH 0112'44" WEST ALONG THE WEST LINE OF THE NORTHEAST ONE-QUARTER OF SECTION 34, TOWNSHIP 43 SOUTH, RANGE 41 EAST, PALM BEACH COUNTY, FLORIDA.
- IN THOSE INSTANCES WHERE UTILITY/DRAINAGE STRUCTURES ARE CONSTRUCTED IN CONFLICT WITH THE PLATTED PERMANENT CONTROL POINTS (P.C.P.) POSITION, STRADDLERS MONUMENTED AS PERMANENT CONTROL POINTS WILL BE SET TO REFERENCE THE PLATTED P.C.P. POSITION.
- LINE INTERSECTING CURVES ARE NON RADIAL UNLESS OTHERWISE NOTED.
- W&P DENOTES WATERWAY AND PRESERVE AREA.
- SQ. FT. DENOTES SQUARE FEET
- C/L DENOTES A CENTERLINE
- PRM DENOTES A SET #2424 PERMANENT REFERENCE MONUMENT (P.R.M.)
- PCP DENOTES A SET #2424 PERMANENT CONTROL POINT (P.C.P.)

SUBDIVISION \* Cypress Head Unit 2  
 BOOK 74 PAGE 52  
 FLOOD ZONE FLOOD MAP  
 QUAD ZONING  
 SE ZIP CODE  
 PUD NAME V/royal Palm Bch

This instrument was prepared by Wm. R. Van Campen, R.L.S., in and for the offices of Bench Mark Land Surveying & Mapping, Inc., 4152 West Blue Heron Boulevard, Suite 121, Riviera Beach, Florida

**BENCH MARK**  
Land Surveying and Mapping, Inc.  
4152 West Blue Heron Blvd, Suite 121, Riviera Beach, FL 33404  
Fax (407) 844-9859 Phone (407) 848-2102

RECORD PLAT		CYPRESS HEAD UNIT 2 PLAT 1	
DWN	DAM	FB	DATE 11/01/94
CKD	FILE P3-A1.dwg	SCALE 1" = 50'	WO.# P3