

MAJESTIC ISLES - PLAT ONE

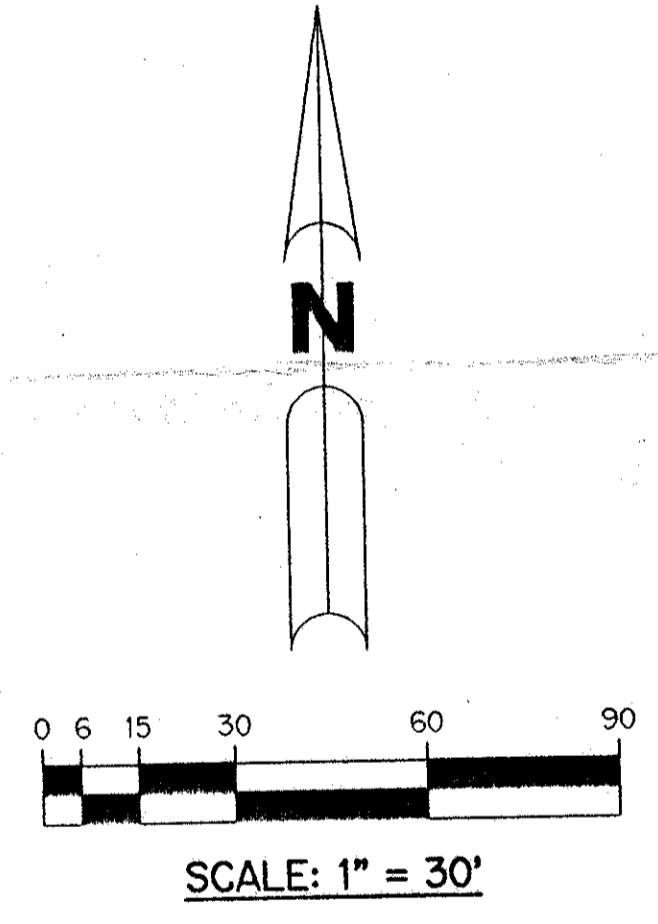
BEING A REPLAT OF A PORTION OF TRACTS 33, 34, 35, 36, 37, 52, 53, AND 54 AND ASSOCIATED ABANDONED RIGHT-OF-WAY ACCORDING TO THE PLAT OF THE SUBDIVISION OF SECTION 26-45S-42E, AS RECORDED IN PLAT BOOK 6, PAGE 26, PUBLIC RECORDS OF PALM BEACH COUNTY, FLORIDA, LYING IN SECTION 26, TOWNSHIP 45 SOUTH, RANGE 42 EAST.

SHEET 7 OF 7 APRIL, 1994

92

PET. 88-139B
NO SCHOOLS D
RESTRICTIVE
COVENANT
5/9/94

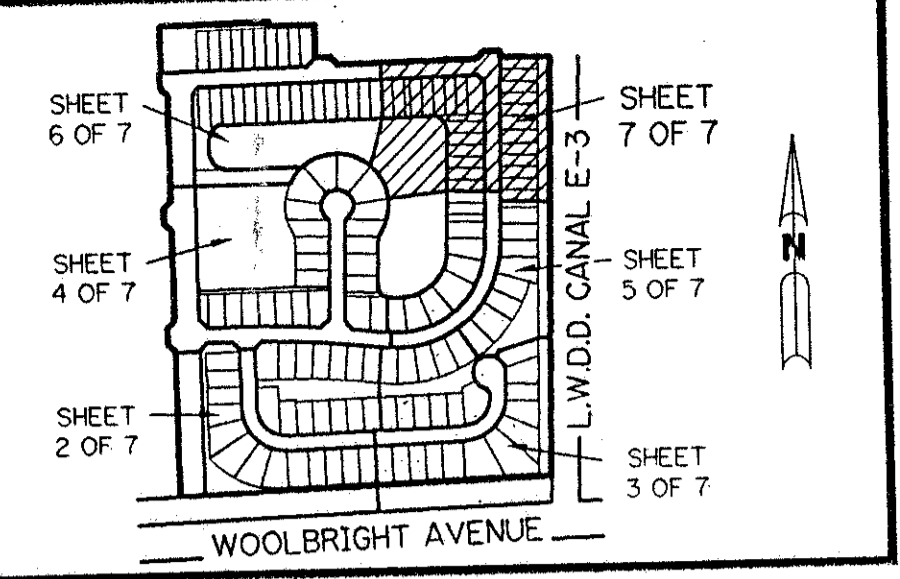
PALM CHASE
(P.B. 49, PGS. 51-53)



PALM CHASE
(P.B. 49, PGS. 51-53)

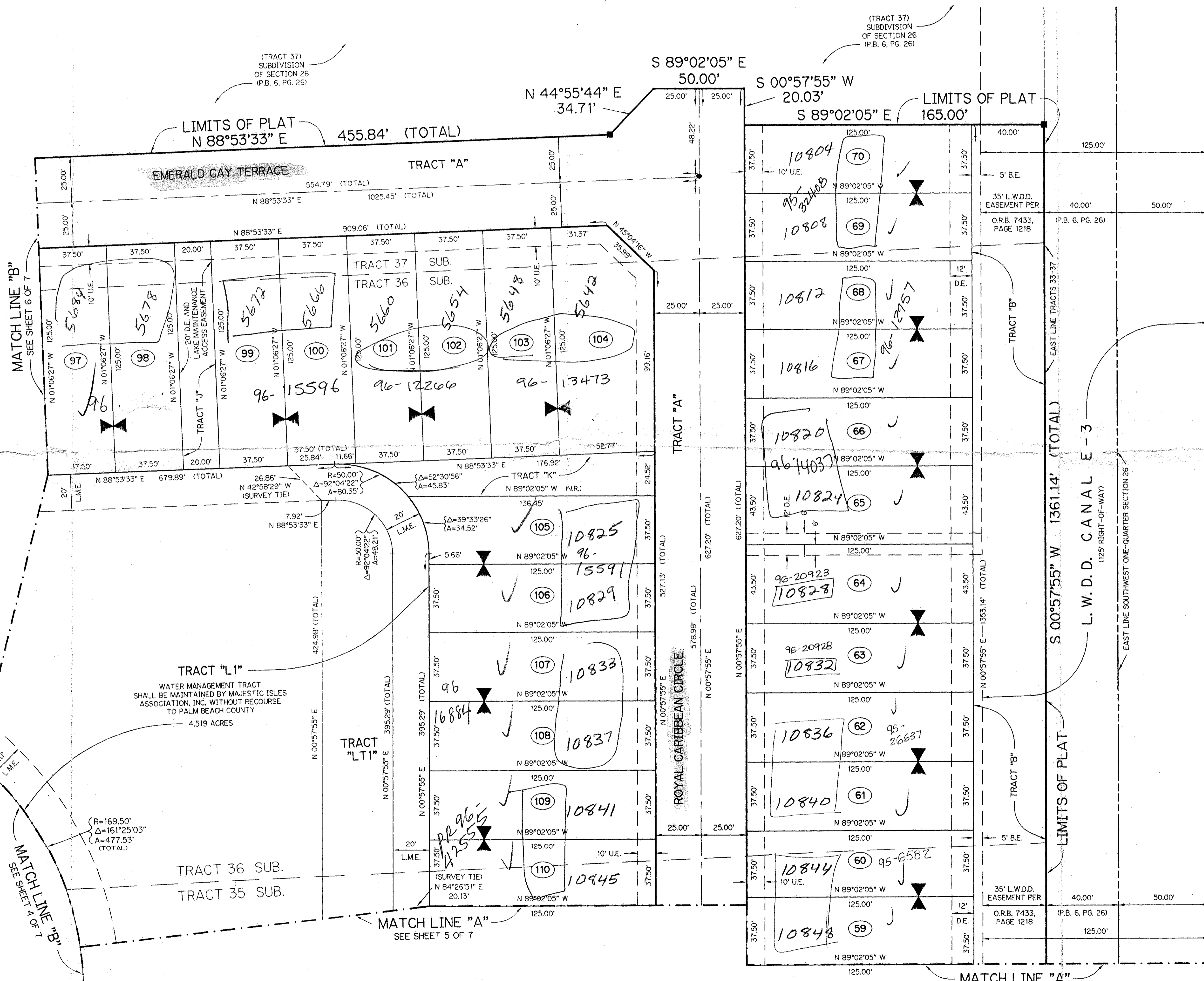
74/92
0627-001

MAJESTIC ISLES - PLAT ONE



KEY MAP
N.T.S.

- LEGEND:**
- - PERMANENT REFERENCE MONUMENT, PLS #4213
 - - PERMANENT CONTROL POINT, PLS #4213
 - Δ - DELTA ANGLE
 - A - ARC LENGTH
 - B.E. - BUFFER EASEMENT
 - D.E. - DRAINAGE EASEMENT
 - L.A.E. - LIMITED ACCESS EASEMENT
 - L.M.E. - LAKE MAINTENANCE EASEMENT
 - L.W.D.D. - LAKE WORTH DRAINAGE DISTRICT
 - N.R. - NOT RADIAL
 - N.T.S. - NOT TO SCALE
 - O.E. - OVERHANG EASEMENT
 - O.R.B. - OFFICIAL RECORD BOOK
 - P.B. - PLAT BOOK
 - PGS. - PAGES
 - P.L.S. - PROFESSIONAL LAND SURVEYOR
 - SUB. - SUBDIVISION OF SECTION 26 (P.B. 6, PG. 26)
 - R - RADIUS
 - TYP. - TYPICAL
 - U.E. - UTILITY EASEMENT
 - ▲ - INDICATES ZERO LOT LINE
 - ⌘ - INDICATES COMMON LOT LINE



THIS INSTRUMENT PREPARED BY
PERRY C. WHITE P.L.S. 4213 STATE OF FLORIDA
LAWSON, NOBLE AND ASSOCIATES, INC.
ENGINEERS PLANNERS SURVEYORS
WEST PALM BEACH, FLORIDA

SUBDIVISION - Majestic Isles Plat 1
BOOK 74 PAGE 92
FLOOD ZONE B FLOOD MAP # 190B
CHAND # 35 ZONING KS
SE 88-139 ZIP CODE 33431
PUD NAME SAME
26-45S-42E

TAZ-448