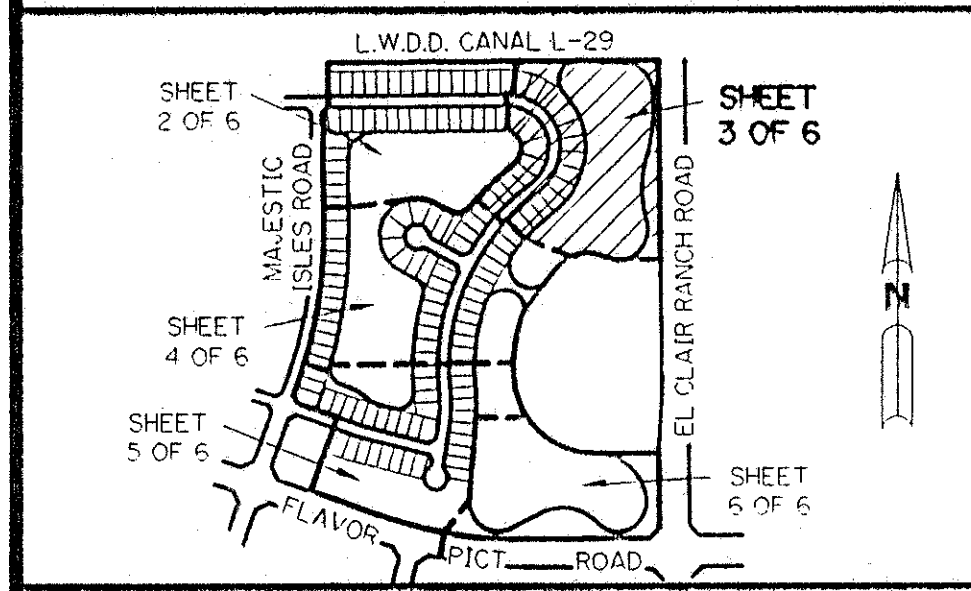


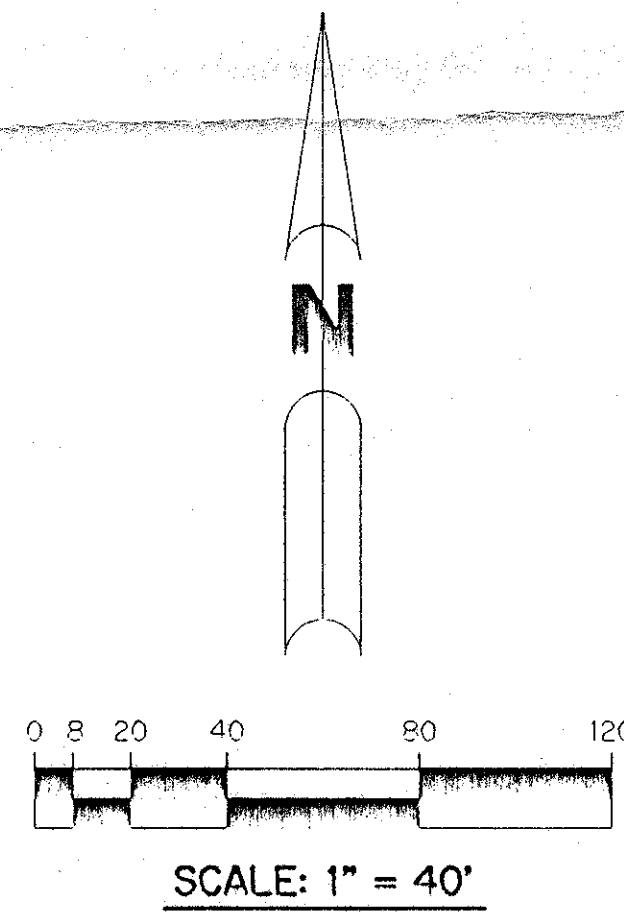
# PLAT OF CORAL LAKES IV

BEING A REPLAT OF A PORTION OF TRACT "A" OF THE  
PLAT OF CORAL LAKES AS RECORDED IN PLAT BOOK 67, PAGES 197-198,  
LYING IN SECTION 3, TOWNSHIP 46 SOUTH, RANGE 42 EAST,  
PALM BEACH COUNTY, FLORIDA

APRIL, 1993 SHEET 3 OF 6



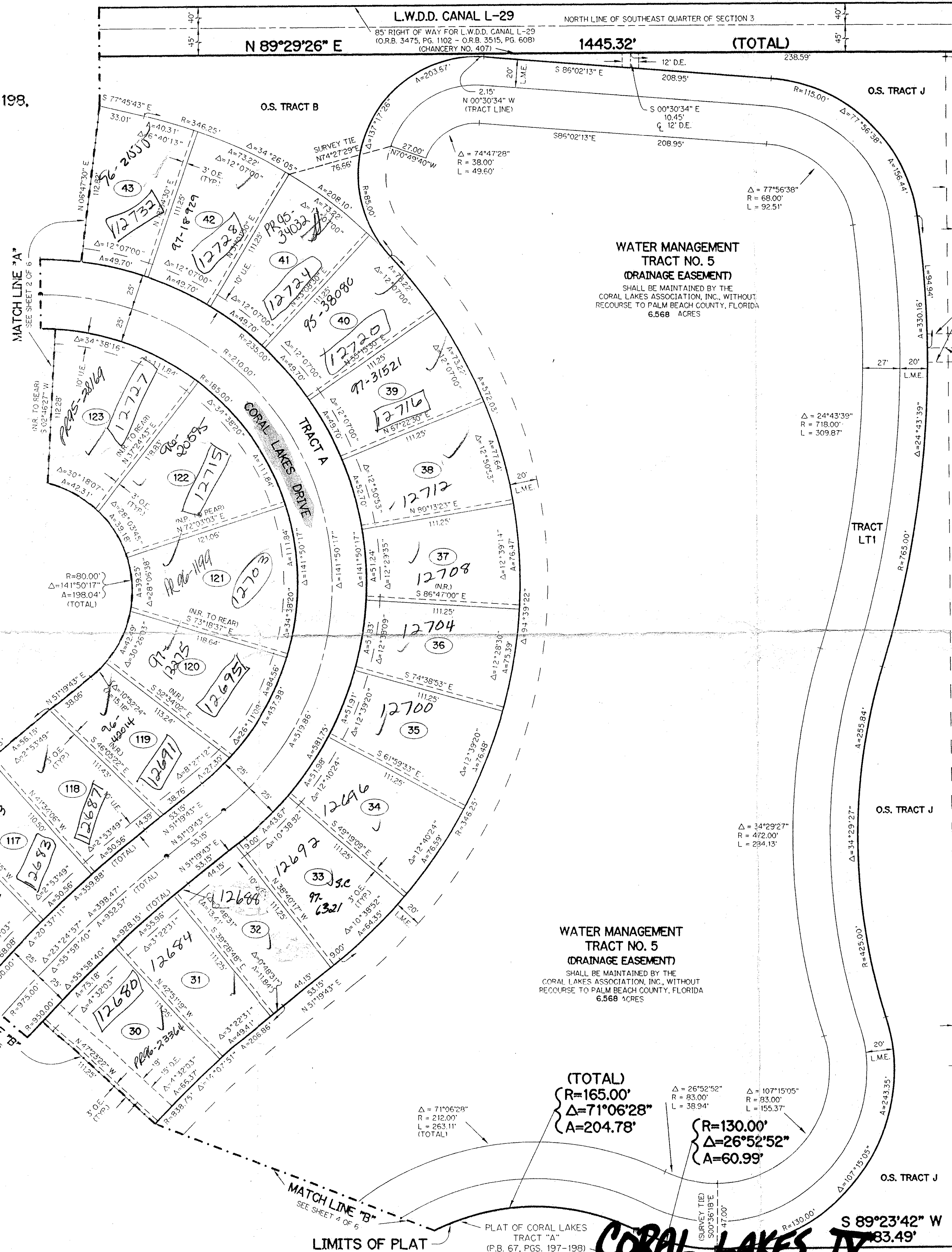
KEY MAP  
N.T.S.



**LEGEND**

- L.A.E. - LIMITED ACCESS EASEMENT
- R - RADIUS
- Δ - DELTA ANGLE
- P.B. - PLAT BOOK
- P.G.S. - PAGES
- O.R. - OFFICIAL RECORD
- P.U.D. - PLANNED UNIT DEVELOPMENT
- P.L.S. - PROFESSIONAL LAND SURVEYOR
- N.R. - NOT RADIAL
- - PERMANENT REFERENCE MONUMENT, PLS #4213
- - PERMANENT CONTROL POINT, PLS #4213
- O.E. - OVERHANG EASEMENT
- U.E. - UTILITY EASEMENT
- D.E. - DRAINAGE EASEMENT
- F.E. - FLOOD PLAIN EASEMENT
- O.S. - OPEN SPACE
- O.R.B. - OFFICIAL RECORD BOOK
- R.O.W. - RIGHT-OF-WAY
- L.M.E. - LAKE MAINTENANCE EASEMENT
- L.M.A.E. - LAKE MAINTENANCE ACCESS EASEMENT

THIS INSTRUMENT PREPARED BY  
PERRY C. WHITE P.L.S. 4213 STATE OF FLORIDA  
LAWSON, NOBLE AND ASSOCIATES, INC.  
ENGINEERS PLANNERS SURVEYORS  
WEST PALM BEACH, FLORIDA



**0614-013**  
**ALLOT. #0001**  
**NO SCHOOLS D**  
**5/3/3/K**

T-2-456

SUBDIVISION Coral Lakes IV  
BOOK 74 PAGE 95  
FLOOD ZONE B  
QUAD # 26  
ZONING AR  
ZIP CODE 33437  
PUD NAME SOURCE  
3/24/95

**WATER MANAGEMENT TRACT NO. 5 (DRAINAGE EASEMENT)**  
SHALL BE MAINTAINED BY THE  
CORAL LAKES ASSOCIATION, INC. WITHOUT  
RECOURSE TO PALM BEACH COUNTY, FLORIDA  
6.568 ACRES

(TOTAL)  
R=165.00'  
Δ=71°06'28"  
A=204.78'  
R=130.00'  
Δ=26°52'52"  
A=60.99'

**0614-005**  
**7/1/95**  
SHEET 3 OF 6