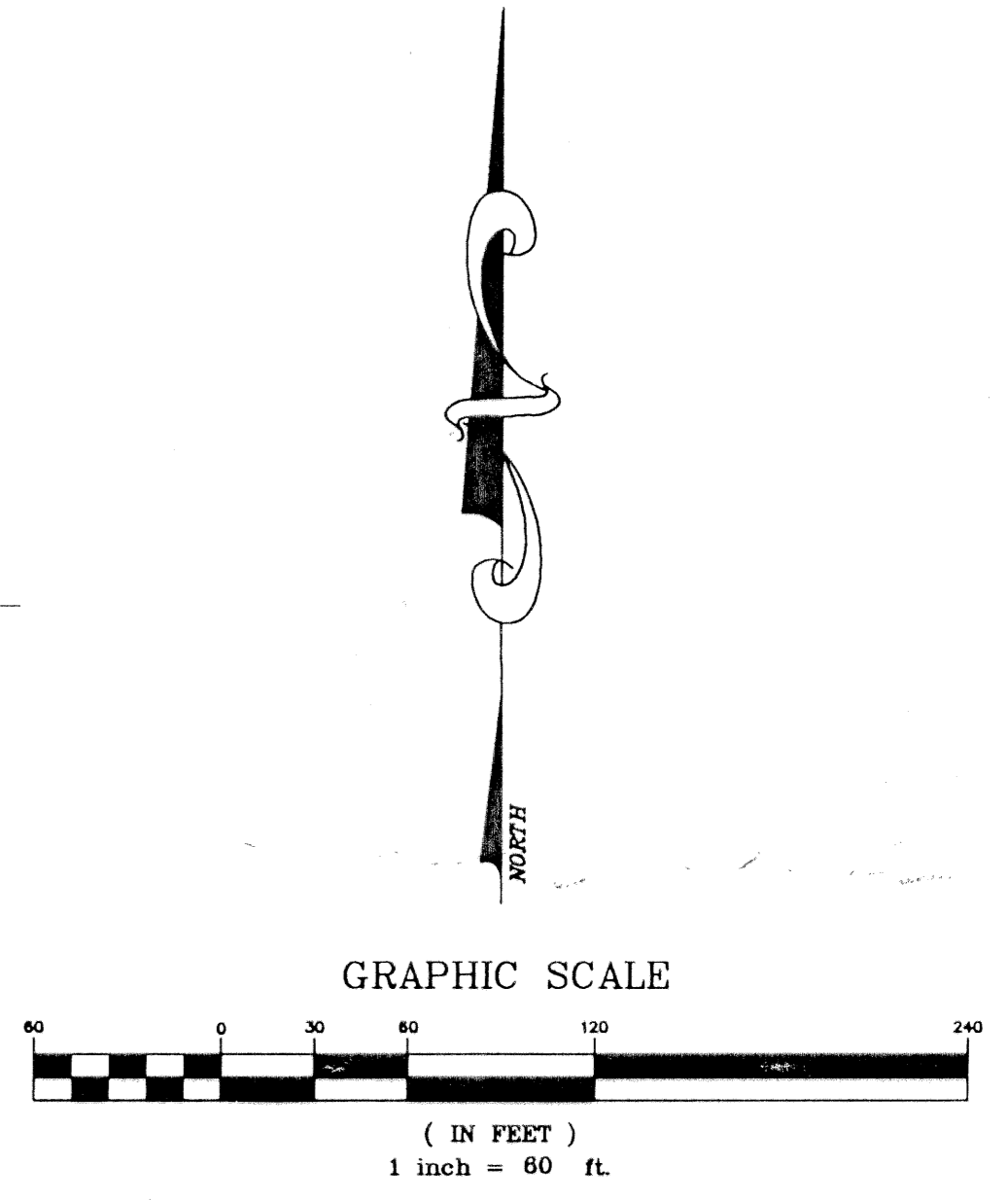
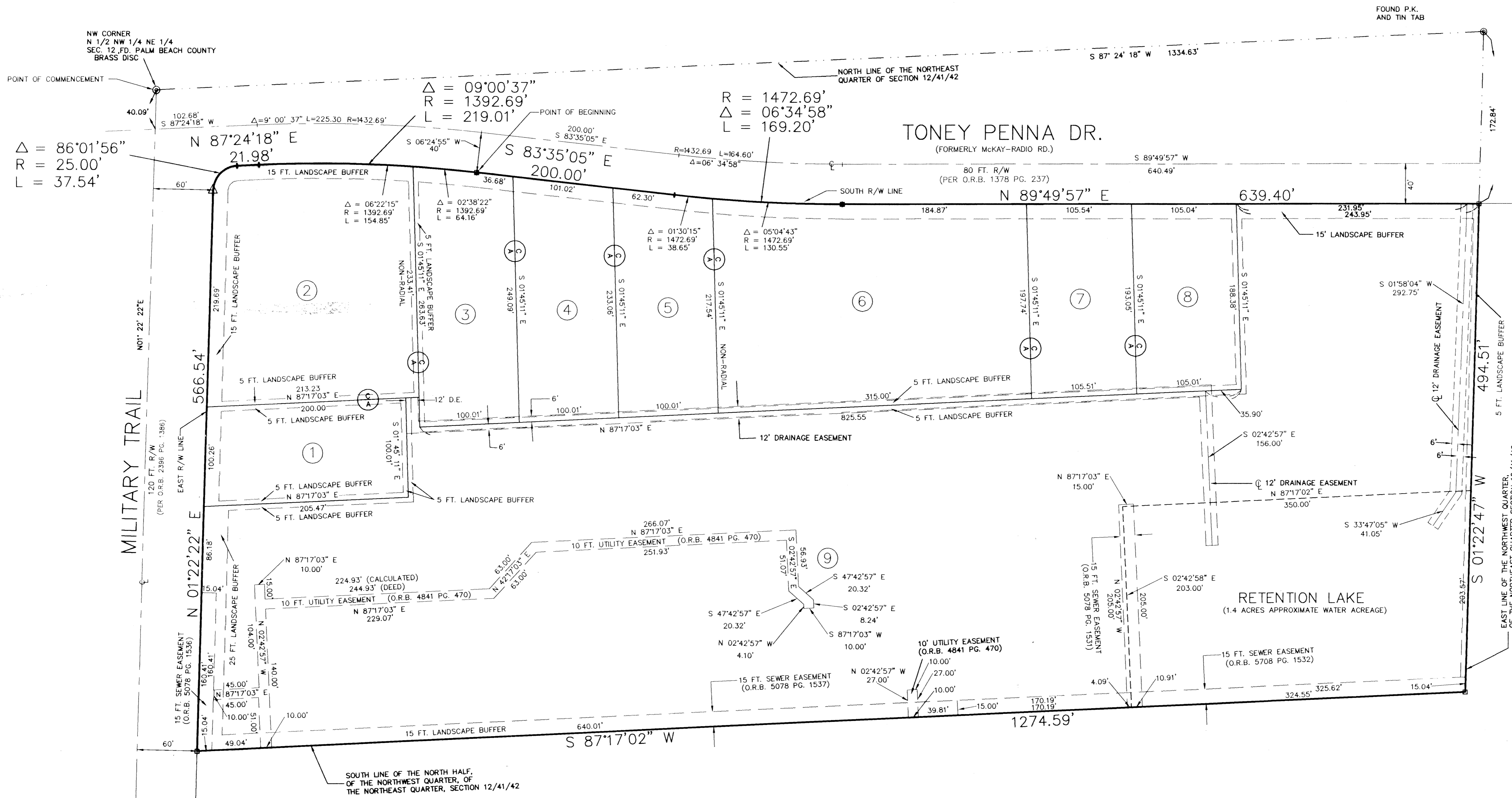


A PLAT OF SOUTHERN PARK OF COMMERCE

A PLANNED UNIT DEVELOPMENT
LYING IN SECTION 12, TOWNSHIP 41 SOUTH, RANGE 42 EAST
TOWN OF JUPITER, PALM BEACH COUNTY, FLORIDA

JANUARY, 1995

100



UNPLATTED

UNPLATTED

BEARING BASE: THE NORTH LINE OF THE NORTHEAST QUARTER OF SECTION 12/41/42 IS TAKEN TO BEAR S 87° 24' 18" W AND ALL OTHER BEARINGS ARE RELATIVE THERETO

- LEGEND:
- = PERMANENT REFERENCE MONUMENT SET
4" X 4" CONCRETE MONUMENT "LS 4382"
 - △ = PERMANENT REFERENCE MONUMENT SET
NAIL & DISK SET IN CONCRETE "LS 4382"
 - O.R.B. = OFFICIAL RECORD BOOK
 - P.G. = PAGE
 - R/W = RIGHT-OF-WAY
 - FT. = FEET
 - DR. = DRIVE
 - SEC. = SECTION
 - C = CENTER LINE
 - R = RADIUS
 - Δ = DELTA ANGLE
 - L = LENGTH OF CURVE
 - FD. = FOUND
 - D.E. = DRAINAGE EASEMENT
 - ⊕ = CROSS ACCESS EASEMENT

REFERENCE JOB# 93-349

SUBDIVISION - Southern Park of Commerce
BOOK 74 PAGE 100
FLOOD HAZ. FLOOD MAP
QUAD # ZONING
SE ZIP CODE
PID NAME T/Jupiter



LINDAHL, BROWNING, FERRARI, & HELLSTROM, INC.
CONSULTING ENGINEERS, PLANNERS & SURVEYORS
210 JUPITER LAKES BLVD. 2400 SE MONTEREY ROAD 2222 COLONIAL ROAD 2000 PALM BEACH LAKES BLVD.
BLDG. 5000, SUITE 104 SUITE 300 SUITE 200 SUITE 702
JUPITER, FL 33468 STUART, FL 34996 FT. PIERCE, FL 34950 WEST PALM BEACH, FL 33409
407-746-9248 407-286-3883 407-461-2450 407-684-3375

2 2
Sheet of

94303PL2.dwg