

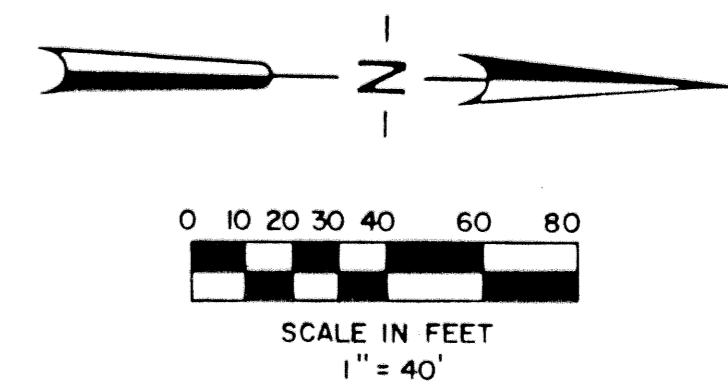
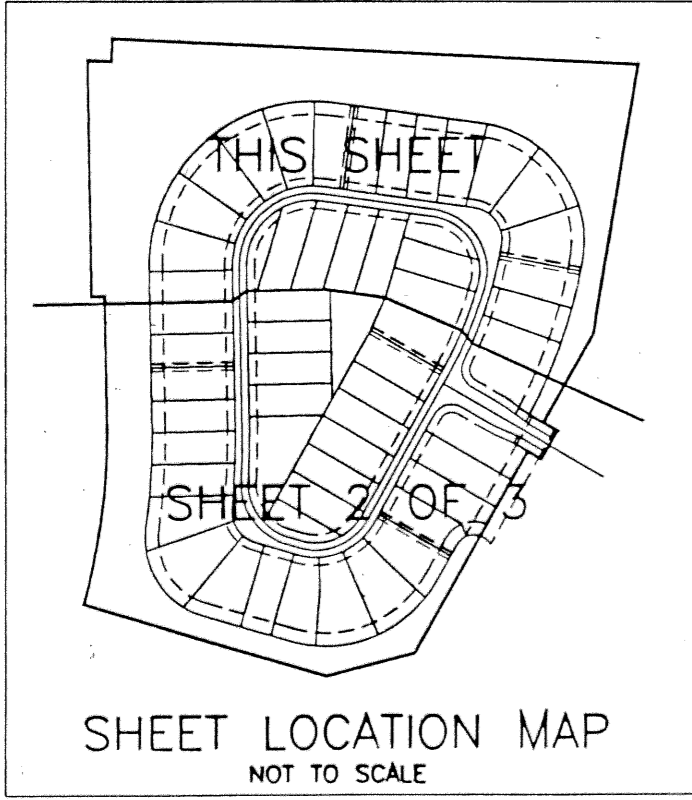
STATE OF FLORIDA  
COUNTY OF PALM BEACH  
This plat was filed for record at \_\_\_\_\_ this \_\_\_\_\_ day of \_\_\_\_\_ 1995 and duly recorded in Plat Book No. \_\_\_\_\_ on Pages \_\_\_\_\_ thru \_\_\_\_\_  
DOROTHY H. WILKIN  
Clerk Circuit Court  
By: \_\_\_\_\_

# RIVER BRIDGE P.U.D. PARCEL 3D

BEING A REPLAT OF PARCEL 3D  
RIVER BRIDGE P.U.D. PLAT 4C (P.B. 73, PGS. 112 - 113)  
OF THE PUBLIC RECORDS OF PALM BEACH COUNTY, FLORIDA  
LYING IN SECTIONS 15 AND 22, TOWNSHIP 44 SOUTH, RANGE 42 EAST,  
CITY OF GREENACRES, PALM BEACH COUNTY, FLORIDA.

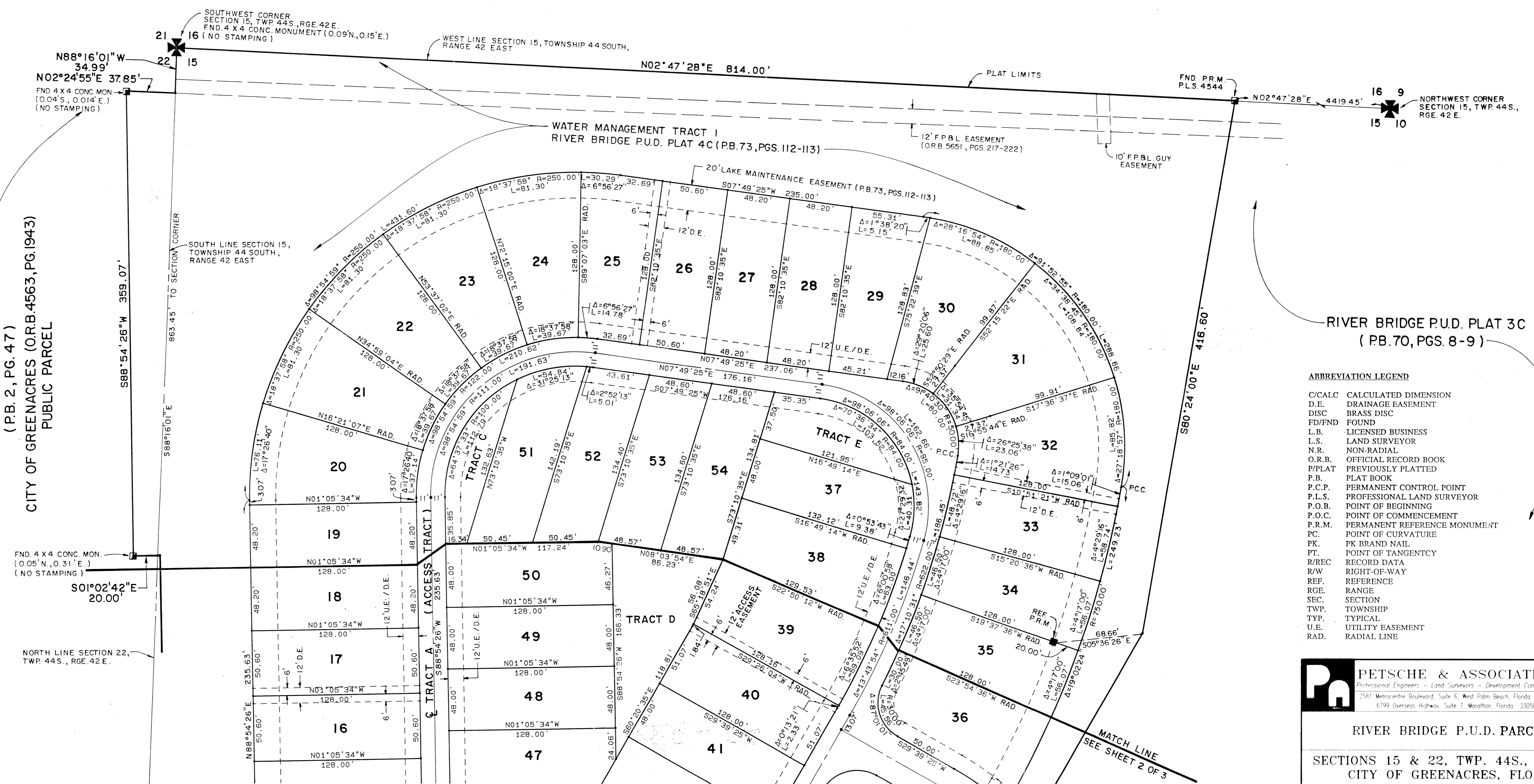
MARCH 1995

SHEET 3 OF 3



SUBDIVISION - River Bridge P.U.D.  
BOOK - 74  
PAGE - 105  
FLOOD ZONE -  
OWNER -  
SE -  
PUD NAME - Greenacres

PALM BEACH FARMS COMPANY PLAT No. 3  
(P.B. 2, PG. 47)  
CITY OF GREENACRES (O.R.B. 4563, PG. 1943)  
PUBLIC PARCEL



- ABBREVIATION LEGEND**
- C/CALC CALCULATED DIMENSION
  - D.E. DRAINAGE EASEMENT
  - DISC BRASS DISC
  - FD/FND FOUND
  - L.B. LICENSED BUSINESS
  - L.S. LAND SURVEYOR
  - N.R. NON-RADIAL
  - O.R.B. OFFICIAL RECORD BOOK
  - P/PLAT PREVIOUSLY PLATTED
  - P.B. PLAT BOOK
  - P.C.P. PERMANENT CONTROL POINT
  - P.L.S. PROFESSIONAL LAND SURVEYOR
  - P.O.B. POINT OF BEGINNING
  - P.O.C. POINT OF COMMENCEMENT
  - P.R.M. PERMANENT REFERENCE MONUMENT
  - PC. POINT OF CURVATURE
  - PK. PK BRAND NAIL
  - PT. POINT OF TANGENCY
  - R/REC RECORD DATA
  - R/W RIGHT-OF-WAY
  - REF. REFERENCE
  - RGE. RANGE
  - SEC. SECTION
  - TWP. TOWNSHIP
  - TYP. TYPICAL
  - U.E. UTILITY EASEMENT
  - RAD. RADIAL LINE

**Pa PETSCHÉ & ASSOCIATES, INC.**  
Professional Engineers - Land Surveyors - Development Consultants - Testing Services  
3581 Metrocentre Boulevard, Suite 6, West Palm Beach, Florida 33407 (407) 640-3909  
6799 Overseas Highway, Suite 7, Marathon, Florida 33050 (305) 743-5788

RIVER BRIDGE P.U.D. PARCEL 3D  
SECTIONS 15 & 22, TWP. 44S., RGE 42E.  
CITY OF GREENACRES, FLORIDA

Drawn by: DWO/MEH	Date: NOV 1994	SCALE: 1" = 40'	JOB NUMBER: 94-006	SHEET: 3 OF 3
Designed by:	Checked by: P. HAGLER			