

BOCA FALLS - PARCEL "T"

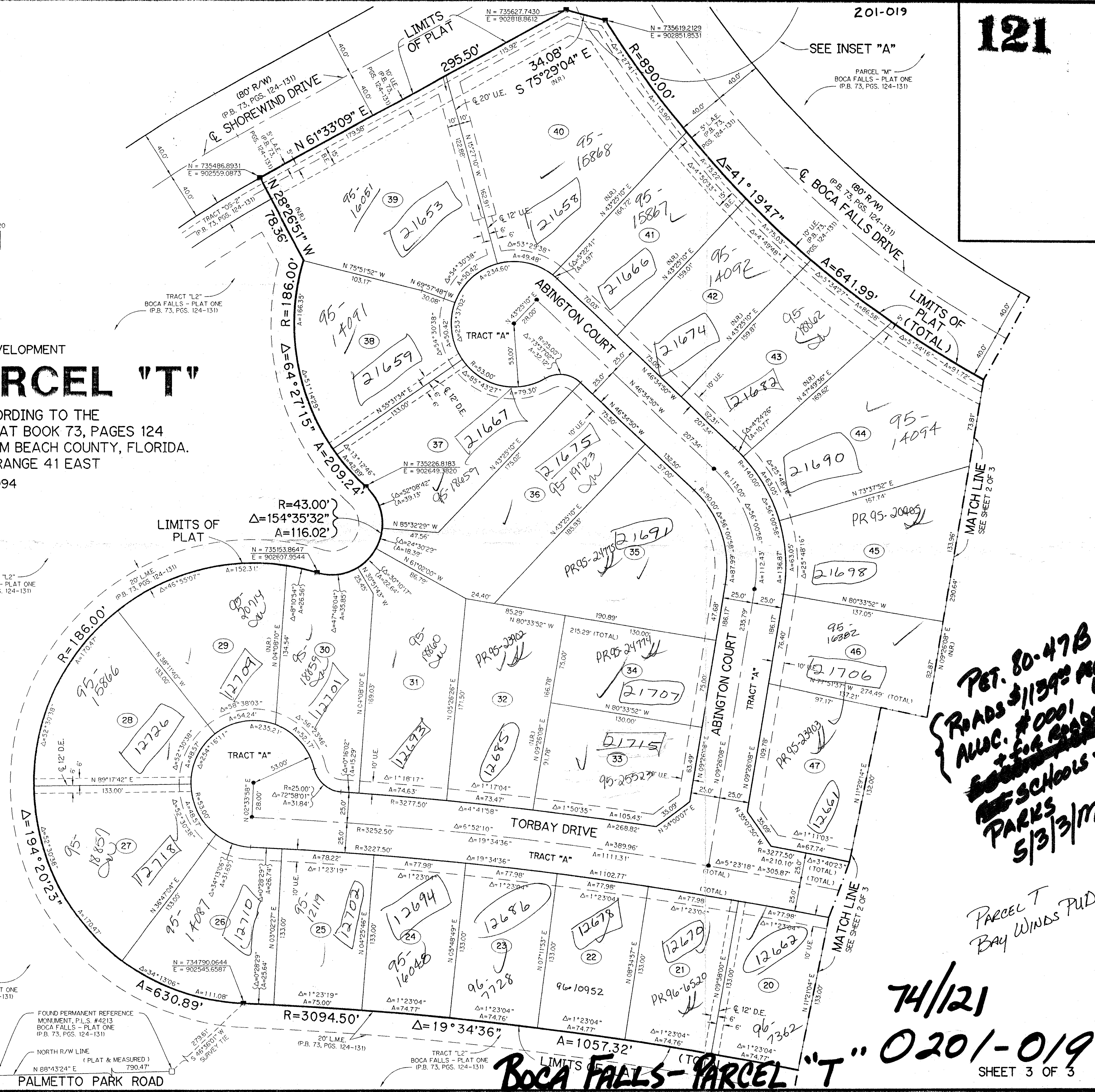
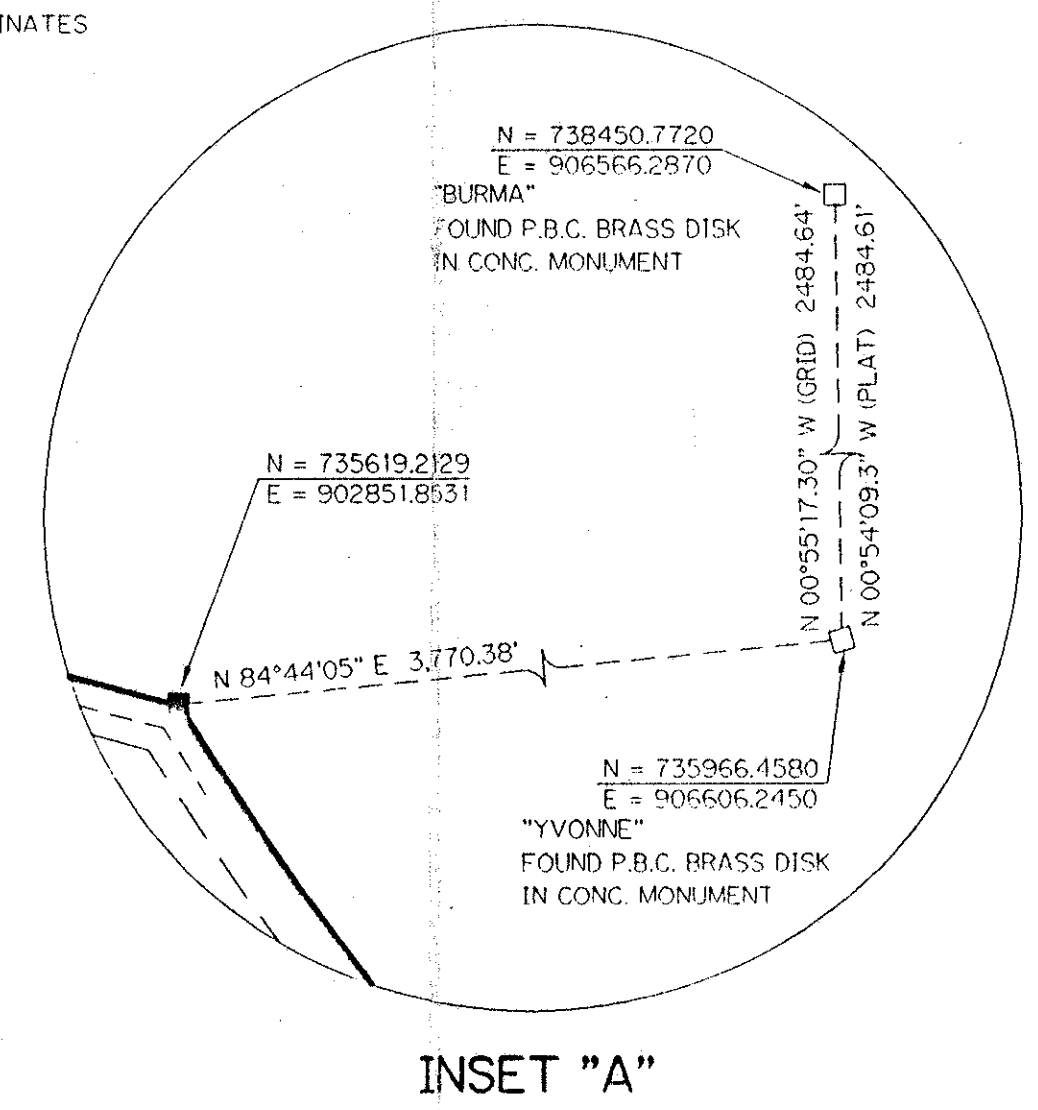
BEING A REPLAT OF ALL OF PARCEL "T" ACCORDING TO THE PLAT OF BOCA FALLS - PLAT ONE AS RECORDED IN PLAT BOOK 73, PAGES 124 THROUGH 131, INCLUSIVE, OF THE PUBLIC RECORDS OF PALM BEACH COUNTY, FLORIDA. LYING IN SECTION 22, TOWNSHIP 47 SOUTH, RANGE 41 EAST

SHEET 3 OF 3 SEPTEMBER, 1994

A PART OF THE BAY WINDS PLANNED UNIT DEVELOPMENT

LEGEND:

- - PERMANENT REFERENCE MONUMENT, PLS #4213
- - PERMANENT CONTROL POINT, PLS #4213
- Δ - DELTA ANGLE
- A - ARC LENGTH
- B.E. - BUFFER EASEMENT
- D.E. - DRAINAGE EASEMENT
- L.M.E. - LAKE MAINTENANCE EASEMENT
- N.R. - NOT RADIAL
- N.T.S. - NOT TO SCALE
- P.B. - PLAT BOOK
- PGS. - PAGES
- P.L.S. - PROFESSIONAL LAND SURVEYOR
- R - RADIUS
- R/W - RIGHT-OF-WAY
- U.E. - UTILITY EASEMENT
- N = 1000.000 - STATE PLANE COORDINATES
- E = 1000.000



*PET. 80-47B
ROADS 5/1/94
ALUC. #0001
FOR SCHOOLS &
PARKS
5/3/97*

*Parcel T
Bay Winds PUD*

*74/121
0201-019
SHEET 3 OF 3*

THIS INSTRUMENT PREPARED BY
PERRY C. WHITE, P.L.S. 4213 STATE OF FLORIDA
LAWSON, NOBLE AND ASSOCIATES, INC.
ENGINEERS PLANNERS SURVEYORS
WEST PALM BEACH, FLORIDA

SUBDIVISION Boca Falls-Parcel T
 BOOK 74 PAGE 121
 FLOOD ZONE Ab-1
 ZONING RT
 ROAD # 69
 80-47 ZIP CODE 33428
 PUD NAME Bay Winds PUD
 22/12/14

T-2-778