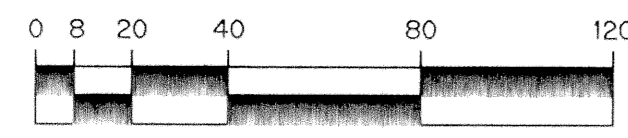
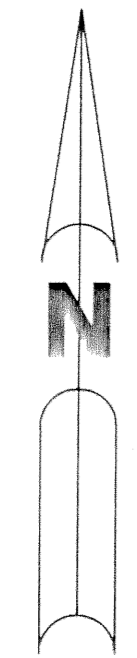


KEY MAP  
NOT TO SCALE

# RIVERWALK - PLAT ONE

A PARCEL OF LAND LYING IN  
SECTION 21, TOWNSHIP 43 SOUTH, RANGE 42 EAST,  
CITY OF WEST PALM BEACH,  
PALM BEACH COUNTY, FLORIDA.

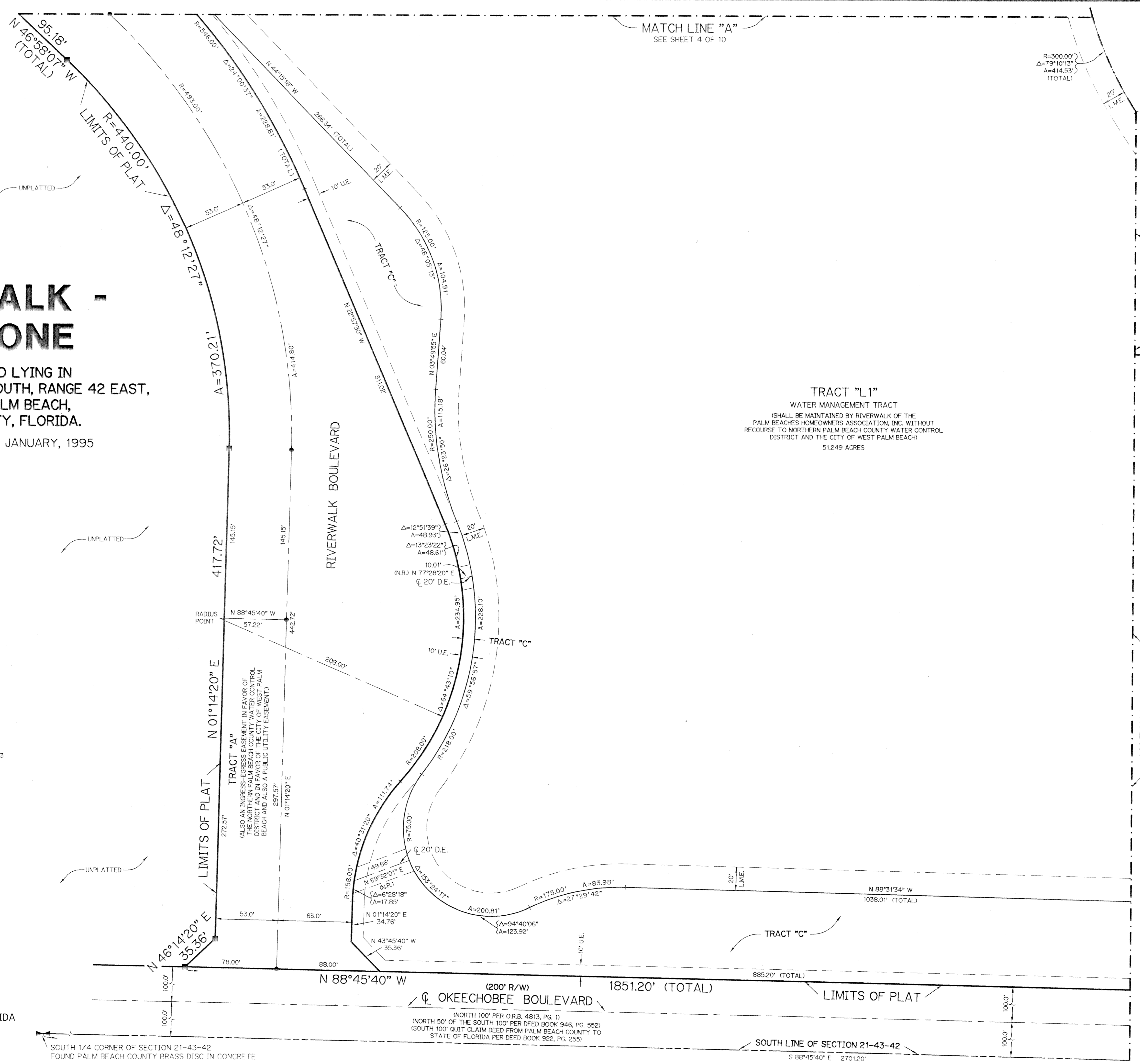
SHEET 2 OF 10      JANUARY, 1995



SCALE: 1" = 40'

**LEGEND:**

- - PERMANENT REFERENCE MONUMENT, PLS #4213
- - PERMANENT CONTROL POINT, PLS #4213
- Δ - DELTA ANGLE
- A - ARC LENGTH
- B.E. - BUFFER EASEMENT
- D.E. - DRAINAGE EASEMENT
- L.M.A.E. - LAKE MAINTENANCE ACCESS EASEMENT
- L.M.E. - LAKE MAINTENANCE EASEMENT
- L.W.D.D. - LAKE WORTH DRAINAGE DISTRICT
- N.R. - NOT RADIAL
- N.T.S. - NOT TO SCALE
- O.R.B. - OFFICIAL RECORD BOOK
- P.B. - PLAT BOOK
- R.E. - RIVERWALK EASEMENT
- PGS. - PAGES
- P.L.S. - PROFESSIONAL LAND SURVEYOR
- R - RADIUS
- R/W - RIGHT-OF-WAY
- S.T. - SURVEY TIE
- U.E. - UTILITY EASEMENT
- ⊥ - INDICATES ZERO LOT LINE
- ⊗ - INDICATES COMMON LOT LINE



TRACT "L1"  
WATER MANAGEMENT TRACT  
(SHALL BE MAINTAINED BY RIVERWALK OF THE  
PALM BEACHES HOMEOWNERS ASSOCIATION, INC. WITHOUT  
RECOURSE TO NORTHERN PALM BEACH COUNTY WATER CONTROL  
DISTRICT AND THE CITY OF WEST PALM BEACH)  
51.249 ACRES

TRACT "A"  
(ALSO AN INGRESS-EGRESS EASEMENT IN FAVOR OF  
THE NORTHERN PALM BEACH COUNTY WATER CONTROL  
DISTRICT AND IN FAVOR OF THE CITY OF WEST PALM  
BEACH AND ALSO A PUBLIC UTILITY EASEMENT.)

THIS INSTRUMENT PREPARED BY  
PERRY C. WHITE P.L.S. 4213 STATE OF FLORIDA  
LAWSON, NOBLE AND ASSOCIATES, INC.  
ENGINEERS PLANNERS SURVEYORS  
WEST PALM BEACH, FLORIDA

SOUTH 1/4 CORNER OF SECTION 21-43-42  
FOUND PALM BEACH COUNTY BRASS DISC IN CONCRETE

(NORTH 100' PER O.R.B. 4813, PG. 1)  
(NORTH 50' OF THE SOUTH 100' PER DEED BOOK 946, PG. 552)  
(SOUTH 100' QUIT CLAIM DEED FROM PALM BEACH COUNTY TO  
STATE OF FLORIDA PER DEED BOOK 922, PG. 255)

SOUTH LINE OF SECTION 21-43-42  
S 88°45'40" E 2701.20'

SUBDIVISION # Riverwalk-Plat One  
BOOK 74 PAGE 138 FLOOD MAP # -  
QUAD # - ZONING -  
SE - ZIP CODE -  
PUD NAME C/WPB.