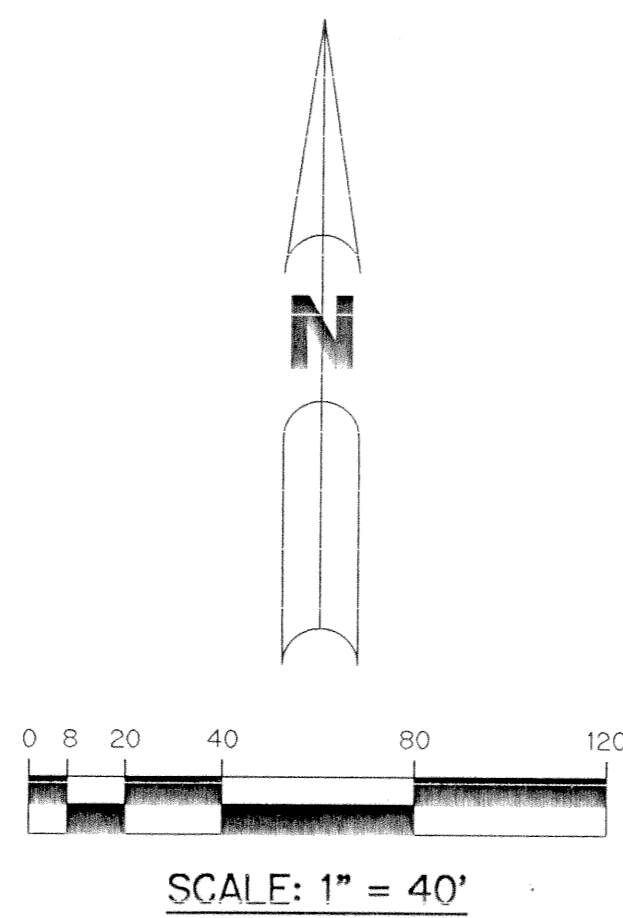
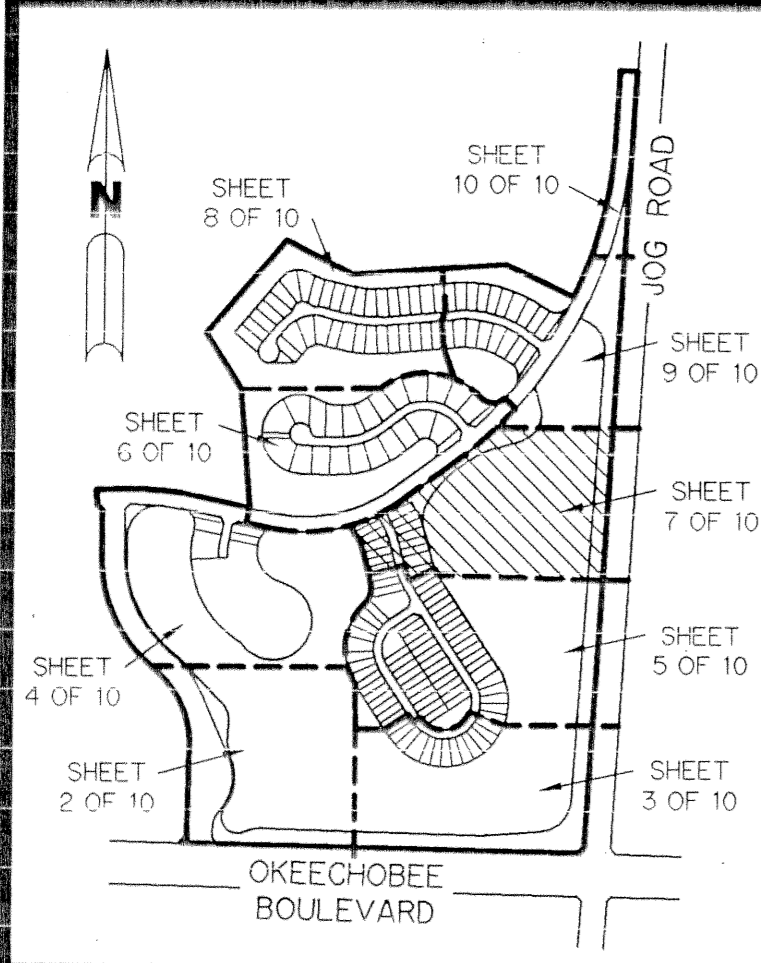


RIVERWALK - PLAT ONE

A PARCEL OF LAND LYING IN SECTION 21, TOWNSHIP 43 SOUTH,
RANGE 42 EAST, CITY OF WEST PALM BEACH,
PALM BEACH COUNTY, FLORIDA.

SHEET 7 OF 10 JANUARY, 1995



KEY MAP
NOT TO SCALE

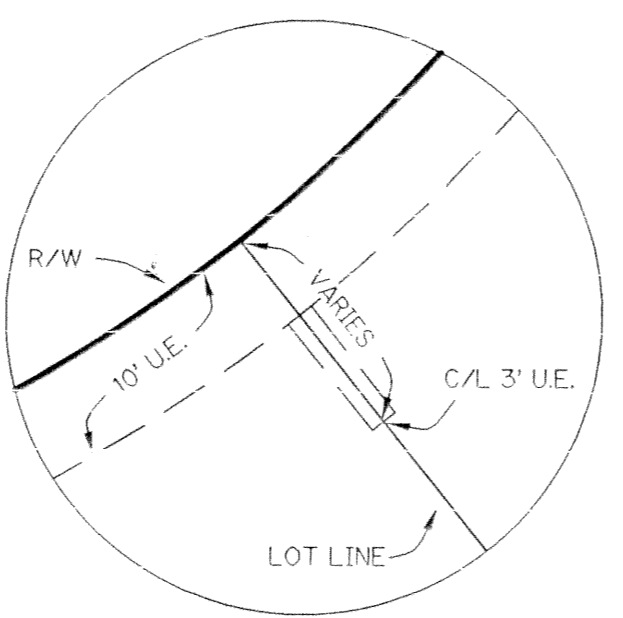
LEGEND:

- - PERMANENT REFERENCE MONUMENT, PLS #4213
- - PERMANENT CONTROL POINT, PLS #4213
- Δ - DELTA ANGLE
- A - ARC LENGTH
- B.E. - BUFFER EASEMENT
- D.E. - DRAINAGE EASEMENT
- L.M.A.E. - LAKE MAINTENANCE ACCESS EASEMENT
- L.M.E. - LAKE MAINTENANCE EASEMENT
- L.W.D.D. - LAKE WORTH DRAINAGE DISTRICT
- N.R. - NOT RADIAL
- N.T.S. - NOT TO SCALE
- O.R.B. - OFFICIAL RECORD BOOK
- P.B. - PLAT BOOK
- R.E. - RIVERWALK EASEMENT
- P.G.S. - PAGES
- P.L.S. - PROFESSIONAL LAND SURVEYOR
- R - RADIUS
- R/W - RIGHT-OF-WAY
- S.T. - SURVEY TIE
- U.E. - UTILITY EASEMENT
- ⊥ - INDICATES ZERO LOT LINE
- ⊗ - INDICATES COMMON LOT LINE

THIS INSTRUMENT PREPARED BY
PERRY C. WHITE, P.L.S. STATE OF FLORIDA
LAWSON, NOBLE AND ASSOCIATES, INC.
ENGINEERS PLANNERS SURVEYORS
WEST PALM BEACH, FLORIDA

(ALSO AN INGRESS-EGRESS EASEMENT IN FAVOR OF THE
NORTHERN PALM BEACH COUNTY WATER CONTROL DISTRICT
AND IN FAVOR OF THE CITY OF WEST PALM BEACH AND ALSO
A PUBLIC UTILITY EASEMENT.)

TRACT "L1"
WATER MANAGEMENT TRACT
(SHALL BE MAINTAINED BY RIVERWALK OF THE
PALM BEACHES HOMEOWNERS ASSOCIATION, INC. WITHOUT
RECOURSE TO NORTHERN PALM BEACH COUNTY WATER CONTROL
DISTRICT AND THE CITY OF WEST PALM BEACH)
51.249 ACRES



Mar 20, 1995 10:45 AM
SUBDIVISION # Riverwalk-Plat One
BOOK 74 PAGE 143
FLOOD ZONE FLOOD MAP #
QUAD # ZONING
SE ZIP CODE
PUD NAME CWPB

