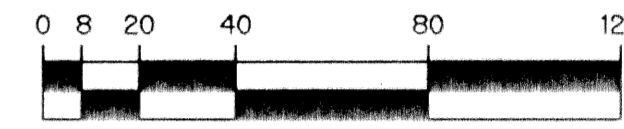


# RIVERWALK - PLAT ONE

A PARCEL OF LAND LYING IN SECTION 21, TOWNSHIP 43 SOUTH, RANGE 42 EAST, CITY OF WEST PALM BEACH, PALM BEACH COUNTY, FLORIDA.

SHEET 8 OF 10 JANUARY, 1995

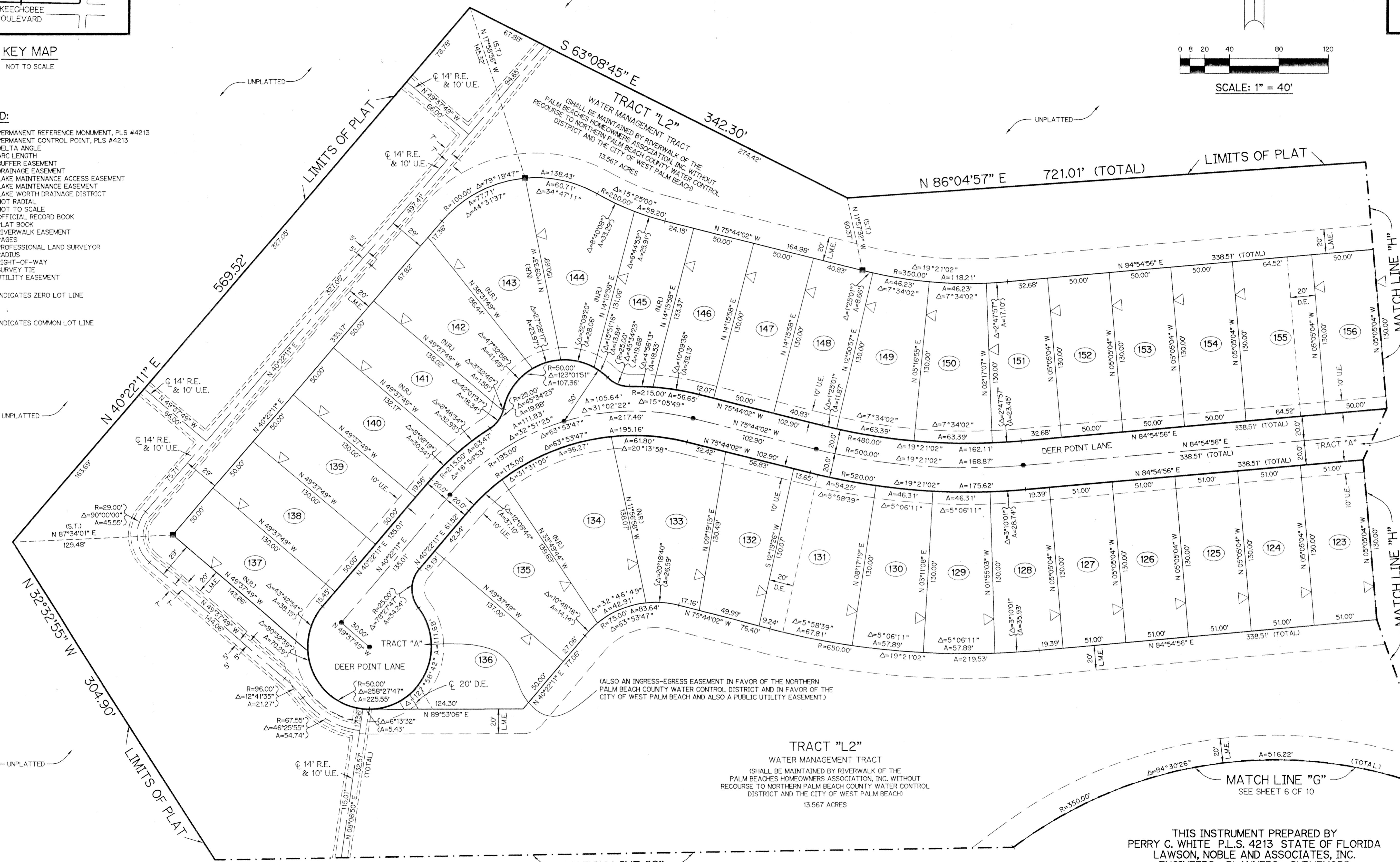


SCALE: 1" = 40'

KEY MAP  
NOT TO SCALE

### LEGEND:

- - PERMANENT REFERENCE MONUMENT, PLS #4213
- - PERMANENT CONTROL POINT, PLS #4213
- Δ - DELTA ANGLE
- A - ARC LENGTH
- B.E. - BUFFER EASEMENT
- D.E. - DRAINAGE EASEMENT
- L.M.A.E. - LAKE MAINTENANCE ACCESS EASEMENT
- L.M.E. - LAKE MAINTENANCE EASEMENT
- L.W.D.D. - LAKE WORTH DRAINAGE DISTRICT
- NR - NOT RADIAL
- N.T.S. - NOT TO SCALE
- O.R.B. - OFFICIAL RECORD BOOK
- P.B. - PLAT BOOK
- R.E. - RIVERWALK EASEMENT
- P.S. - PAGES
- P.L.S. - PROFESSIONAL LAND SURVEYOR
- R - RADIUS
- R/W - RIGHT-OF-WAY
- S.T. - SURVEY TIE
- U.E. - UTILITY EASEMENT
- ▽ - INDICATES ZERO LOT LINE
- ⊗ - INDICATES COMMON LOT LINE



SUBDIVISION - Riverwalk Plat One  
 BOOK - 74  
 PAGE - 144  
 FLOOD ZONE -  
 ZONING -  
 QUARTER -  
 SE -  
 ZIP CODE -  
 PUD NAME - C/WPB  
 2/19/95

(ALSO AN INGRESS-EGRESS EASEMENT IN FAVOR OF THE NORTHERN PALM BEACH COUNTY WATER CONTROL DISTRICT AND IN FAVOR OF THE CITY OF WEST PALM BEACH AND ALSO A PUBLIC UTILITY EASEMENT.)

**TRACT "L2"**  
 WATER MANAGEMENT TRACT  
 (SHALL BE MAINTAINED BY RIVERWALK OF THE PALM BEACHES HOMEOWNERS ASSOCIATION, INC. WITHOUT RECOURSE TO NORTHERN PALM BEACH COUNTY WATER CONTROL DISTRICT AND THE CITY OF WEST PALM BEACH)  
 13.567 ACRES

THIS INSTRUMENT PREPARED BY  
 PERRY C. WHITE P.L.S. 4213 STATE OF FLORIDA  
 LAWSON, NOBLE AND ASSOCIATES, INC.  
 ENGINEERS PLANNERS SURVEYORS  
 WEST PALM BEACH, FLORIDA