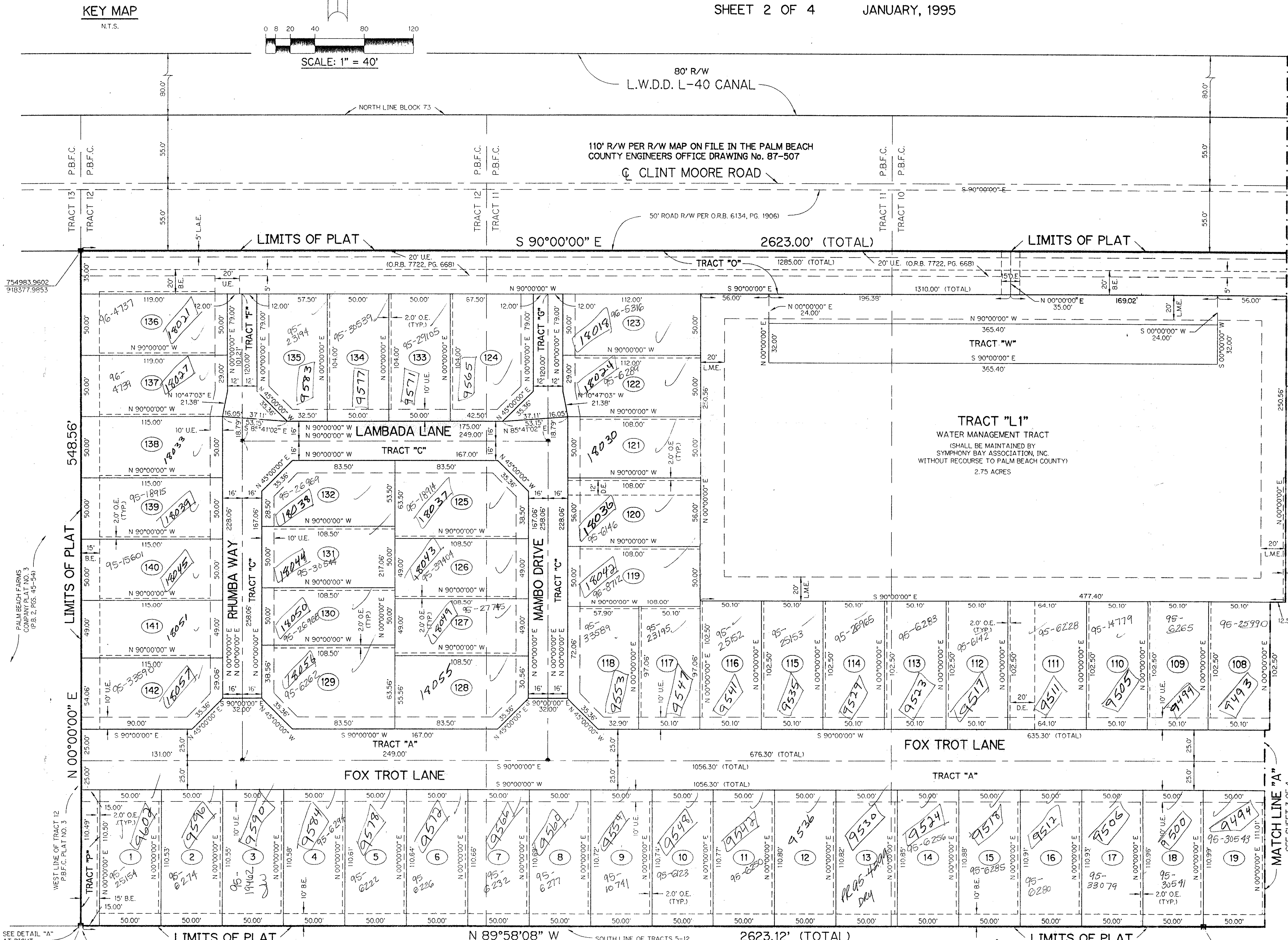
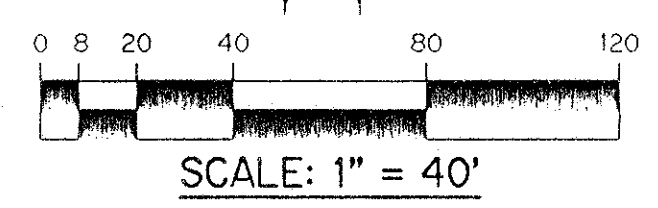
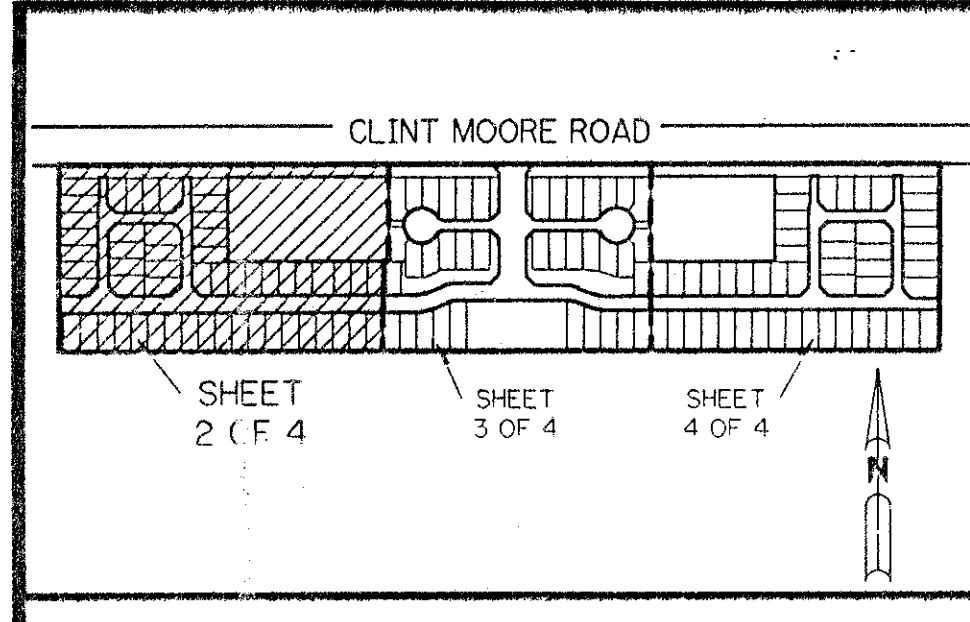


A PLANNED UNIT DEVELOPMENT

# SYMPHONY BAY

BEING A REPLAT OF A PORTION OF TRACTS 5, 6, 7, 8, 9, 10, 11, AND 12 AND ASSOCIATED RIGHT-OF-WAY ALL IN BLOCK 73 ACCORDING TO THE PLAT OF PALM BEACH FARMS COMPANY PLAT NO. 3, AS RECORDED IN PLAT BOOK 2, PAGE 45, PUBLIC RECORDS OF PALM BEACH COUNTY, FLORIDA, LYING IN SECTION 6, TOWNSHIP 47 SOUTH, RANGE 42 EAST

SHEET 2 OF 4 JANUARY, 1995



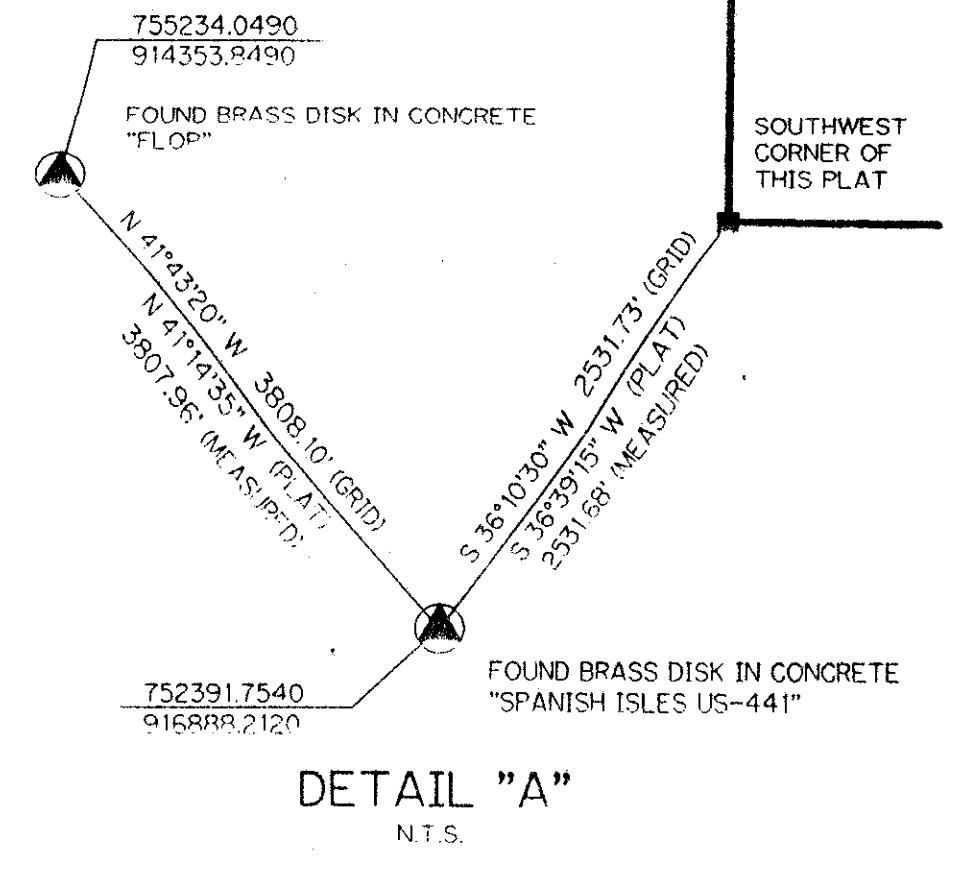
- LEGEND:**
- - PERMANENT REFERENCE MONUMENT, PLS #4213
  - - PERMANENT CONTROL POINT, PLS #4213
  - △ - DELTA ANGLE
  - A - ARC LENGTH
  - BE - BUFFER EASEMENT
  - DE - DRAINAGE EASEMENT
  - L.M.A.E. - LAKE MAINTENANCE ACCESS EASEMENT
  - L.M.E. - LAKE MAINTENANCE EASEMENT
  - L.W.D.D. - LAKE WORTH DRAINAGE DISTRICT
  - N.R. - NOT RADIAL
  - N.T.S. - NOT TO SCALE
  - O.E. - OVERHANG EASEMENT
  - O.R.B. - OFFICIAL RECORD BOOK
  - P.B. - PLAT BOOK
  - P.B.F.C. - BLOCK 73, PALM BEACH FARMS CO. PLAT NO. 3 (PLAT BOOK 2, PAGE 45)
  - PGS. - PAGES
  - P.L.S. - PROFESSIONAL LAND SURVEYOR
  - R - RADIUS
  - R/W - RIGHT-OF-WAY
  - U.E. - UTILITY EASEMENT

**NOTE:**

COORDINATES SHOWN ARE GRID COORDINATES DATUM = 1983 NORTH AMERICAN DATUM (1990 ADJUSTMENT) ZONE = FLORIDA EAST ZONE LINEAR UNIT = US SURVEY FEET COORDINATE SYSTEM = 1983 STATE PLANE TRANSVERSE MERCATOR PROJECTION

ALL DISTANCES SHOWN ARE GROUND DISTANCES UNLESS OTHERWISE NOTED SCALE FACTOR = 1.0000207 GRID DISTANCE = (GROUND DISTANCE) x (SCALE FACTOR)

BEARING ROTATION (PLAT TO GRID) = -00°28'45" EXAMPLE: S 90°00'00" E (PLAT BEARING) = N 89°31'15" E (GRID BEARING)



THIS INSTRUMENT PREPARED BY PERRY C. WHITE P.L.S. 4213 STATE OF FLORIDA LAWSON, NOBLE AND ASSOCIATES, INC. ENGINEERS PLANNERS SURVEYORS WEST PALM BEACH, FLORIDA

0642-001  
74/167  
SHEET 2 OF 4

PET. 94-98  
5/3/3/M

**Symphony Bay**

SUBDIVISION - Symphony Bay  
BLOCK 74  
FLOOD ZONE B  
QUAD # 53  
SE 74-48  
PUD NAME same  
PAGE 167  
FLOOD MAP #215A  
ZONING PUD  
ZIP CODE 33496  
T42-769

SEE DETAIL "A" AT RIGHT  
754435.4116  
918392.5739

BOCA GARDENS (P.U.D.) (P.B. 50, PGS. 25-35)

BOCA GARDENS (P.U.D.) (P.B. 50, PGS. 25-35)

754442.5699  
919297.5650