

A PLANNED UNIT DEVELOPMENT SYMPHONY BAY

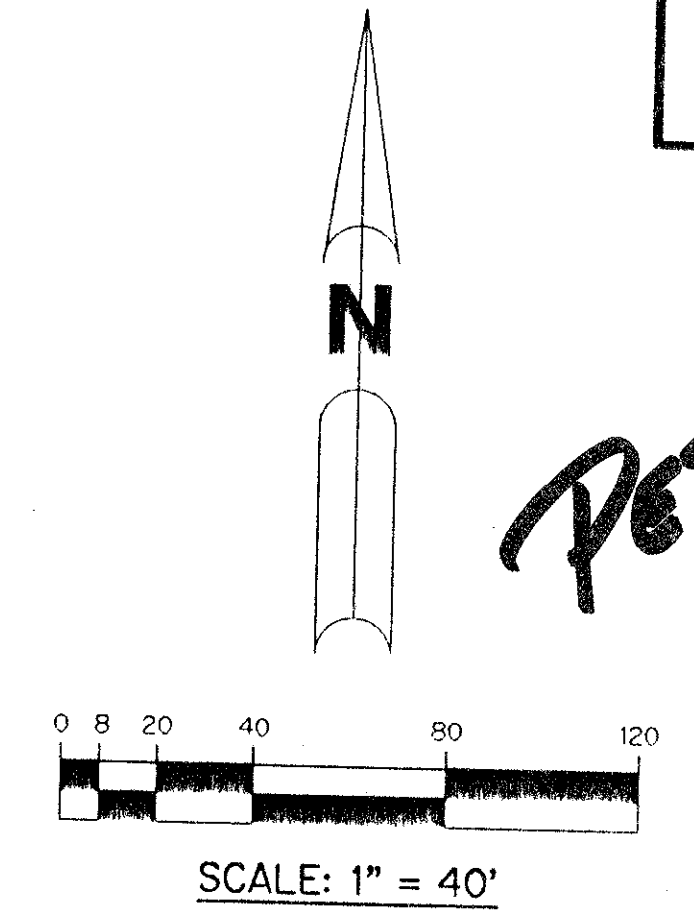
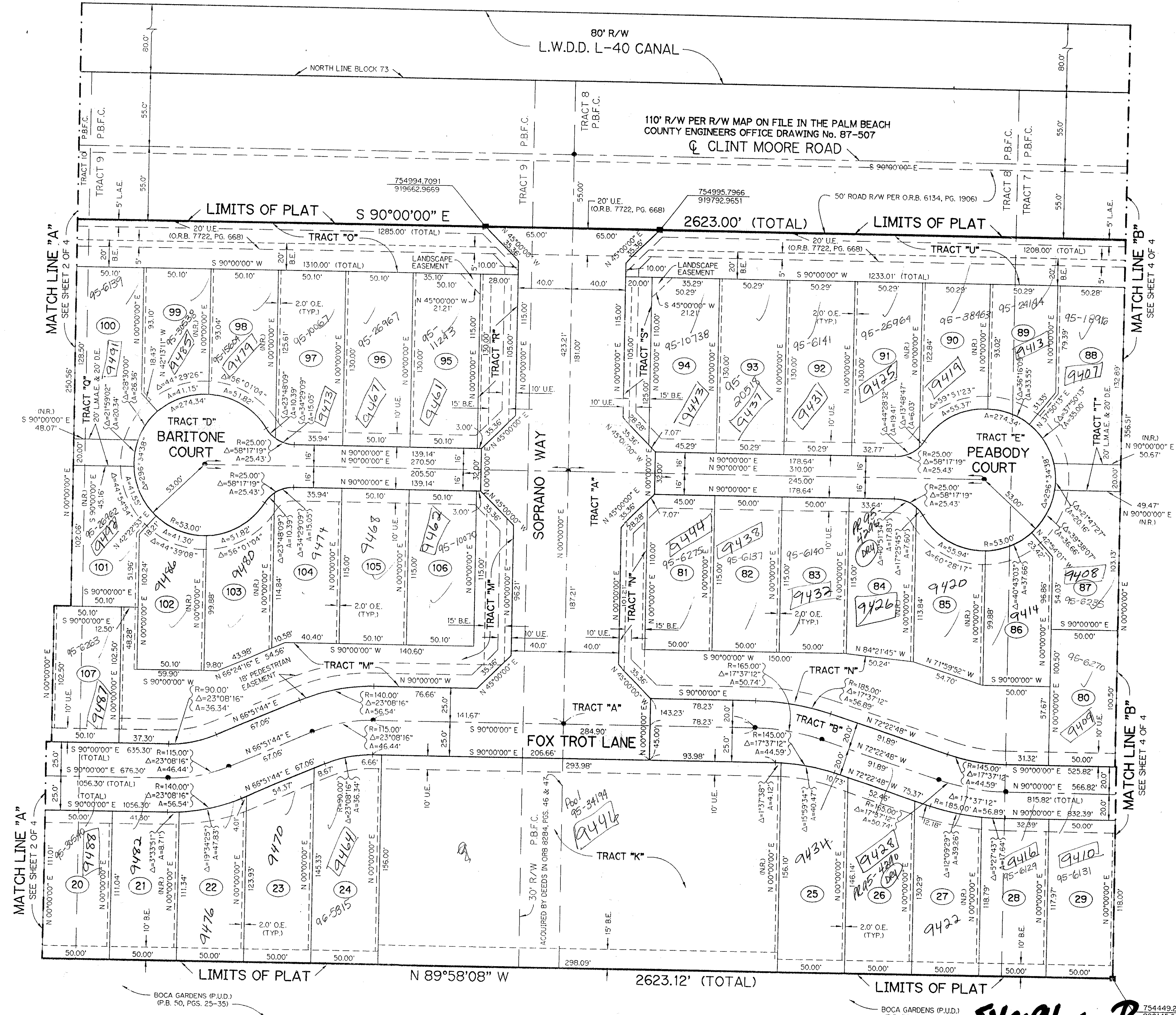
642-001

168

BEING A REPLAT OF A PORTION OF TRACTS 5, 6, 7, 8, 9, 10, 11, AND 12 AND ASSOCIATED RIGHT-OF-WAY ALL IN BLOCK 73 ACCORDING TO THE PLAT OF PALM BEACH FARMS COMPANY PLAT NO. 3, AS RECORDED IN PLAT BOOK 2, PAGE 45, PUBLIC RECORDS OF PALM BEACH COUNTY, FLORIDA. LYING IN SECTION 6, TOWNSHIP 47 SOUTH, RANGE 42 EAST

SHEET 3 OF 4 JANUARY, 1995

KEY MAP
N.T.S.



LEGEND:

- PERMANENT REFERENCE MONUMENT, P.L.S. #4213
- PERMANENT CONTROL POINT, P.L.S. #4213
- Δ DELTA ANGLE
- A ARC LENGTH
- BE BUFFER EASEMENT
- DE DRAINAGE EASEMENT
- L.M.A.E. LAKE MAINTENANCE ACCESS EASEMENT
- L.M.E. LAKE MAINTENANCE EASEMENT
- L.W.D.D. LAKE WORTH DRAINAGE DISTRICT
- NR NOT RADIAL
- N.T.S. NOT TO SCALE
- O.E. OVERHANG EASEMENT
- O.R.B. OFFICIAL RECORD BOOK
- P.B. PLAT BOOK
- P.B.F.C. BLOCK 73, PALM BEACH FARMS CO. PLAT NO. 3 (PLAT BOOK 2, PAGE 45)
- PGS. PAGES
- P.L.S. PROFESSIONAL LAND SURVEYOR
- R RADIUS
- R/W RIGHT-OF-WAY
- U.E. UTILITY EASEMENT
- ORB OFFICIAL RECORD BOOK

NOTE:

COORDINATES SHOWN ARE GRID COORDINATES
 DATUM = 1983 NORTH AMERICAN DATUM (1990 ADJUSTMENT)
 ZONE = FLORIDA EAST ZONE
 LINEAR UNIT = US SURVEY FEET
 COORDINATE SYSTEM = 1983 STATE PLANE, TRANSVERSE MERCATOR PROJECTION
 ALL DISTANCES SHOWN ARE GROUND DISTANCES UNLESS OTHERWISE NOTED
 SCALE FACTOR = 1.0000207
 GRID DISTANCE = (GROUND DISTANCE) x (SCALE FACTOR)
 BEARING ROTATION (PLAT TO GRID) = -0°28'45"
 EXAMPLE: S 90°00'00" E (PLAT BEARING) = N 89°31'15" E (GRID BEARING)

THIS INSTRUMENT PREPARED BY
 PERRY C. WHITE P.L.S. 4213 STATE OF FLORIDA
 LAWSON, NOBLE AND ASSOCIATES, INC.
 ENGINEERS PLANNERS SURVEYORS
 WEST PALM BEACH, FLORIDA

*Pet. 94-98
5/3/3/m*

T&Z - 769

SUBDIVISION = Symphony Bay
 BOOK 74 PAGE 168
 FLOOD MAP # 215A
 QUAD # 53 ZONING PUD
 SE 94-48 ZIP CODE 33496
 PUD NAME same
 642-001

Symphony Bay

*0642-001
74/168*