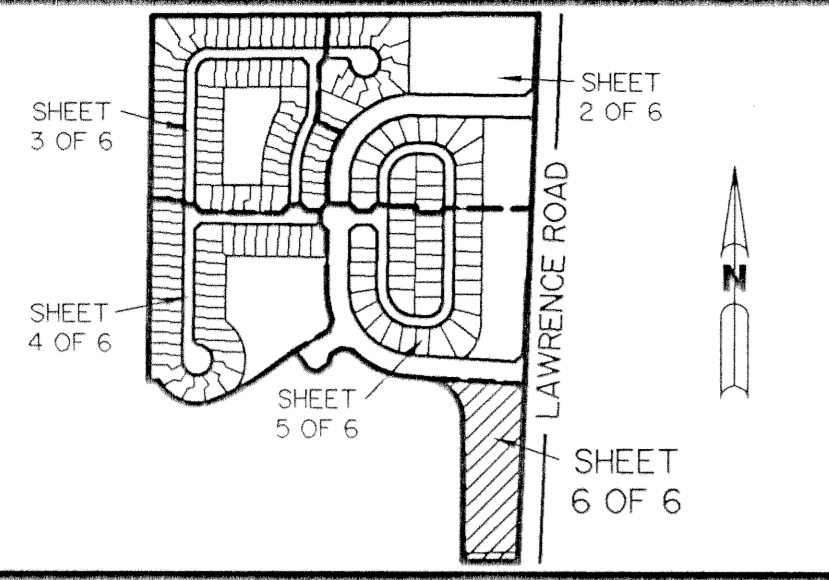


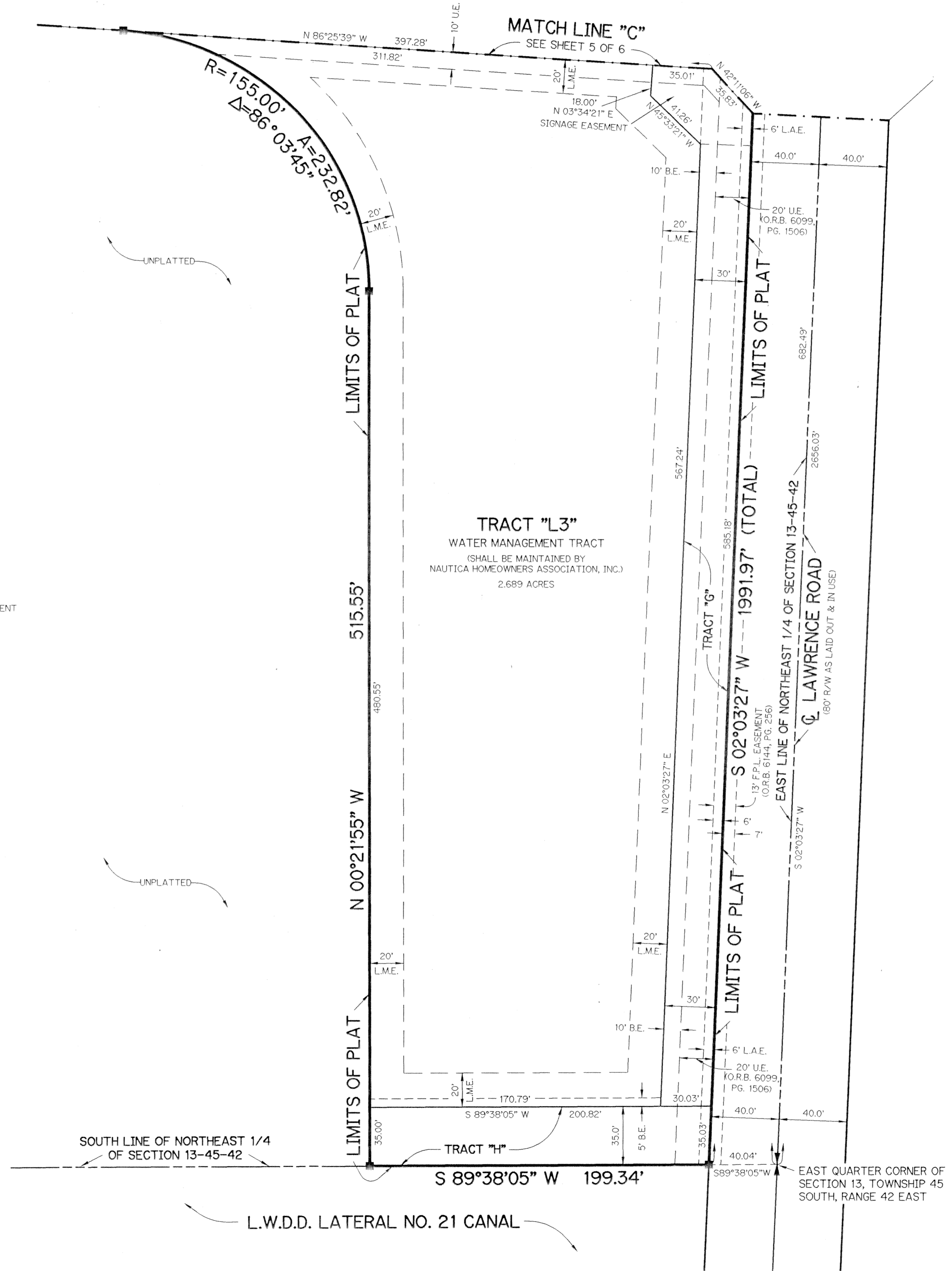
NAUTICA P.U.D. - PLAT ONE

A PARCEL OF LAND LYING IN SECTION 13,
TOWNSHIP 45 SOUTH, RANGE 42 EAST, CITY OF BOYNTON BEACH,
PALM BEACH COUNTY, FLORIDA.

SHEET 6 OF 6 JANUARY, 1995

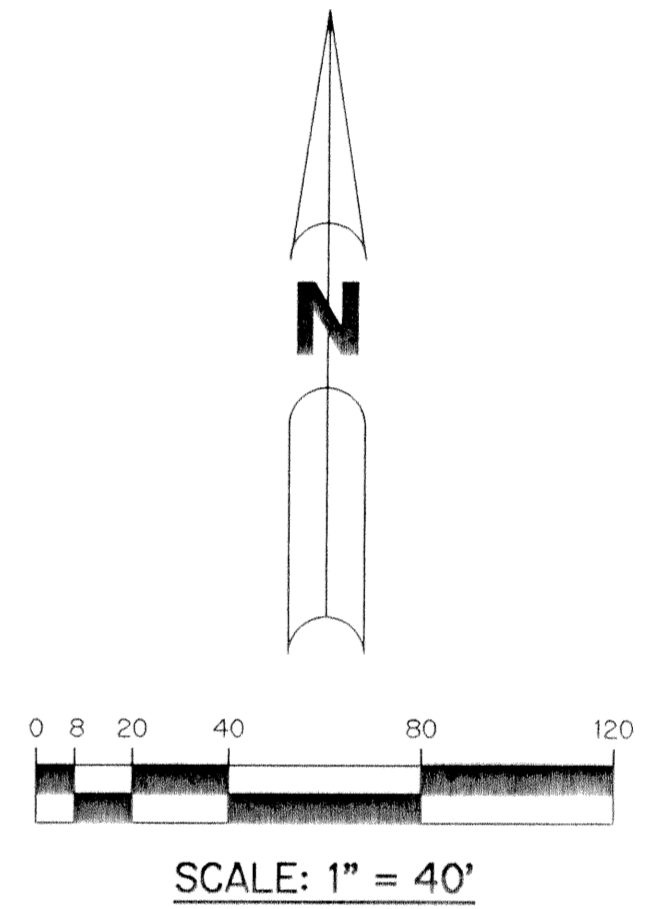


KEY MAP
N.T.S.



LEGEND:

- - PERMANENT REFERENCE MONUMENT, PLS #4190
- - PERMANENT CONTROL POINT, PLS #4190
- Δ - DELTA ANGLE
- A - ARC LENGTH
- B.E. - BUFFER EASEMENT
- D.E. - DRAINAGE EASEMENT
- F.P.L. - FLORIDA POWER & LIGHT EASEMENT
- L.A.E. - LIMITED ACCESS EASEMENT
- L.M.A.E. - LAKE MAINTENANCE ACCESS EASEMENT
- L.M.E. - LAKE MAINTENANCE EASEMENT
- L.W.D.D. - LAKE WORTH DRAINAGE DISTRICT
- M.E. - DRAINAGE, MAINTENANCE AND OVERHANG EASEMENT
- N.R. - NOT RADIAL
- N.T.S. - NOT TO SCALE
- OR.B. - OFFICIAL RECORD BOOK
- P.B. - PLAT BOOK
- PGS. - PAGES
- P.L.S. - PROFESSIONAL LAND SURVEYOR
- R - RADIUS
- R/W - RIGHT-OF-WAY
- S.T. - SURVEY TIE
- U.E. - UTILITY EASEMENT



THIS INSTRUMENT PREPARED BY
WILBUR F. DIVINE, P.L.S. 4190, STATE OF FLORIDA
LAWSON, NOBLE AND ASSOCIATES, INC.
ENGINEERS PLANNERS SURVEYORS
WEST PALM BEACH, FLORIDA

SUBDIVISION * Nautica Plat 1
BOOK 74 PAGE 175
FLOOD ZONE FLOOD MAP *
QUAD ZONING
SE ZIP CODE
PUD NAME c/ Boynton Bch.