

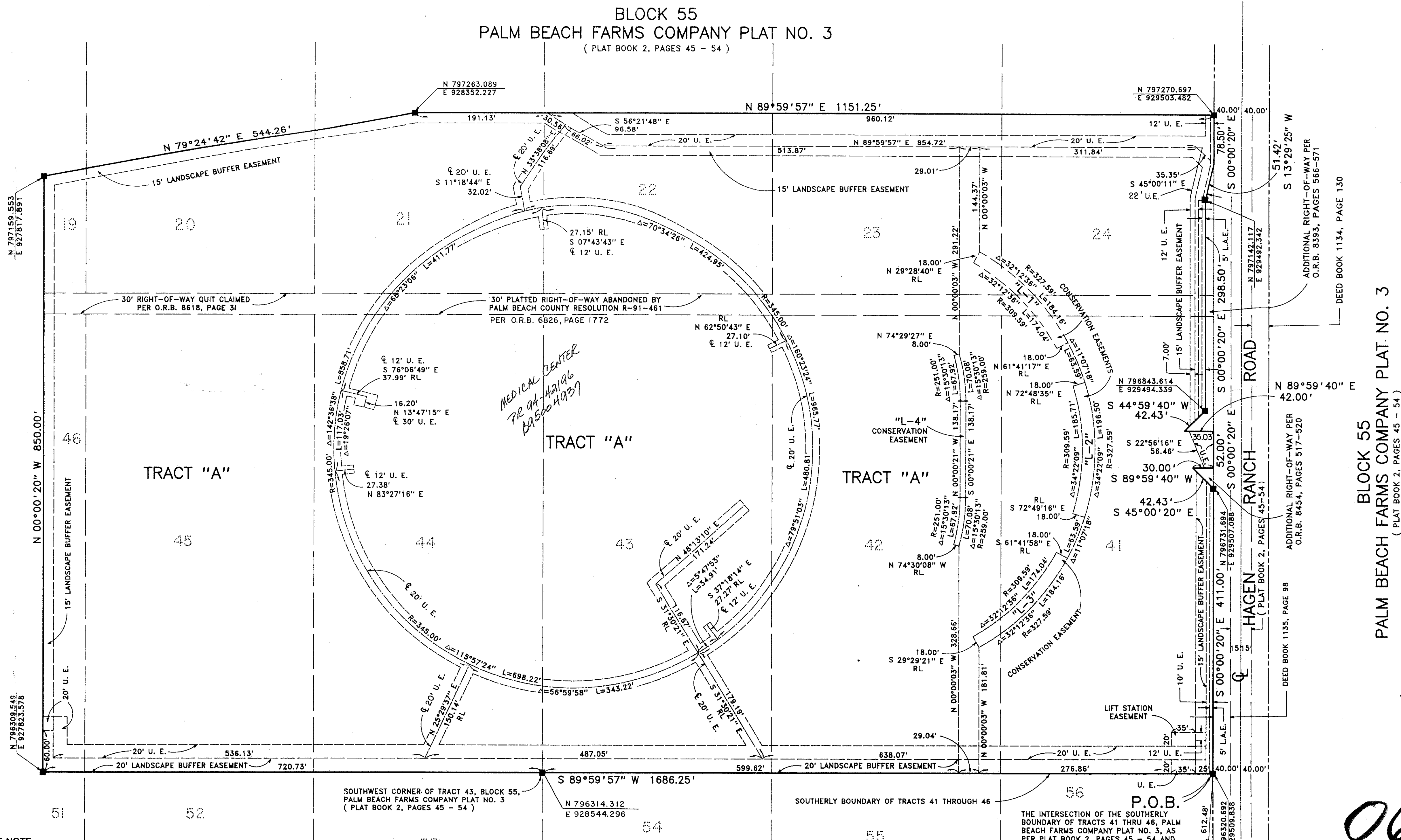
A PLAT OF BETHESDA HEALTH CITY

LYING IN SECTION 28, TOWNSHIP 45 SOUTH, RANGE 42 EAST,
BEING A REPLAT OF TRACTS 42 THRU 45, INCLUSIVE, TOGETHER WITH PORTIONS OF TRACTS
19 THROUGH 24, INCLUSIVE, AND PORTIONS OF TRACTS 41 AND 46, ALL IN BLOCK 55,
PALM BEACH FARMS COMPANY PLAT NO. 3, AS RECORDED IN PLAT BOOK 2, PAGES 45
THROUGH 54, INCLUSIVE, OF THE PUBLIC RECORDS OF PALM BEACH COUNTY, FLORIDA.
SHEET 2 OF 2

198

STATE OF FLORIDA
COUNTY OF PALM BEACH
This Plat was filed for record at _____
M. this _____ day of _____ 19____
and duly recorded in Plat Book No. _____
on Page _____
Dorothy H. Wilken, Clerk of the Circuit Court
By _____ D.C.

BLOCK 55 PALM BEACH FARMS COMPANY PLAT NO. 3 (PLAT BOOK 2, PAGES 45 - 54)



PET. 93-35
5/3/3/K

BLOCK 55
PALM BEACH FARMS COMPANY PLAT NO. 3
(PLAT BOOK 2, PAGES 45 - 54)

BLOCK 55
PALM BEACH FARMS COMPANY PLAT NO. 3
(PLAT BOOK 2, PAGES 45 - 54)

BLOCK 55 PALM BEACH FARMS COMPANY PLAT NO. 3 (PLAT BOOK 2, PAGES 45 - 54)

COORDINATE NOTE:

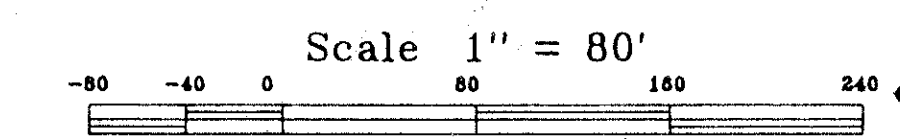
STATE PLANE COORDINATES SHOWN ARE GRID DATUM, NAD 83 1990
ADJUSTMENT, FLORIDA EAST ZONE, COORDINATE SYSTEM 1983 STATE PLANE,
TRANSVERSE MERCATOR PROJECTION
LINEAR UNIT = US SURVEY FEET
ALL DISTANCES ARE GROUND
SCALE FACTOR = 1.0000263
GROUND DISTANCE X SCALE FACTOR = GRID DISTANCE

S 89°59'57" W (PLAT BEARING) -00°22'40" = BEARING ROTATION
S 89°37'17" W (GRID BEARING) (PLAT TO GRID)

SOUTH LINE OF TRACTS 41 THROUGH 46, BLOCK 55, PALM BEACH FARMS
COMPANY PLAT NO. 3, AS RECORDED IN PLAT BOOK 2, PAGES 45-54, INCLUSIVE
OF THE PUBLIC RECORDS OF PALM BEACH COUNTY, FLORIDA.

THE INTERSECTION OF THE SOUTHERLY
BOUNDARY OF TRACTS 41 THRU 46, PALM
BEACH FARMS COMPANY PLAT NO. 3, AS
PER PLAT BOOK 2, PAGES 45 - 54 AND
THE WESTERLY RIGHT-OF-WAY LINE OF
HAGEN RANCH ROAD AS PER DEED BOOK
1135, PAGE 98.

0644-001



Landmark Surveying & Mapping Inc.
1850 FOREST HILL BOULEVARD
PH. (407)433-5405 SUITE 100 W.P.B. FLORIDA

A PLAT OF
BETHESDA HEALTH CITY

BOOK 74
PAGE 198
FLOOD ZONE D
QUAD # 50
SE 10073-35
PUD NAME
28145141

742-449