

GREENBRIAR I OF SHERBROOKE - P.U.D. REPLAT

0309-011

15

BEING A REPLAT OF LOT A-1 AND LOT A-2 OF A REPLAT OF PARCEL "A", GREENBRIAR I OF SHERBROOKE - P.U.D. AS RECORDED IN PLAT BOOK 36, PAGE 144 AND ALSO BEING A REPLAT OF LOTS 7 THRU 13, AND LOTS 20 AND 26 OF GREENBRIAR I OF SHERBROOKE - P.U.D., AS RECORDED IN PLAT BOOK 33, PAGES 55, 56 AND 57 OF THE PUBLIC RECORDS OF PALM BEACH COUNTY, FLORIDA

IN PART OF SECTIONS 5 AND 6, TOWNSHIP 45 SOUTH, RANGE 42 EAST
PALM BEACH COUNTY, FLORIDA
SHEET NO. 2 OF 2

GEE & JENSON
ENGINEERS - ARCHITECTS - PLANNERS, INC.
WEST PALM BEACH, FLORIDA
JANUARY 1995

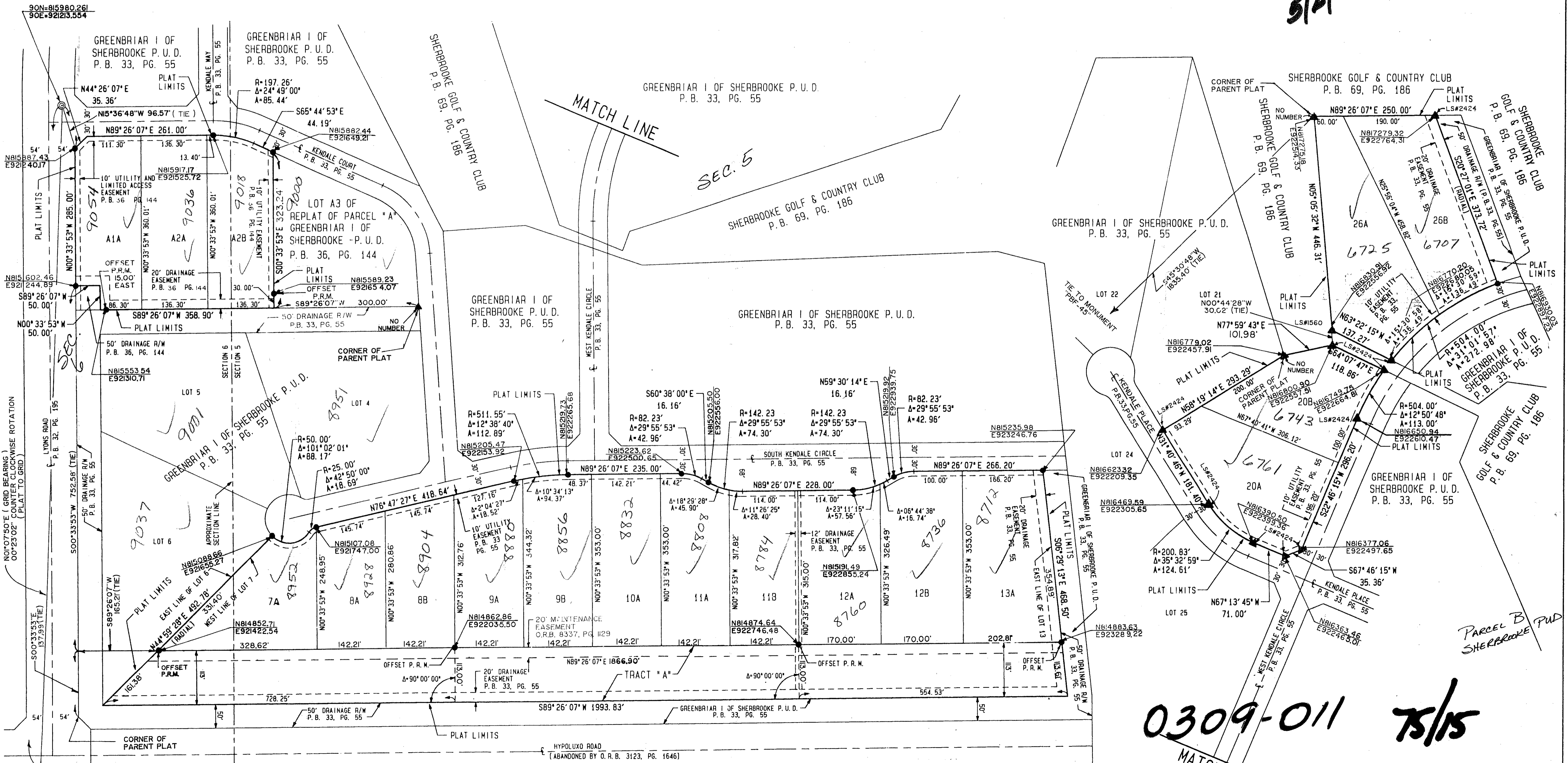


SCALE 1" = 100'

STATE OF FLORIDA
COUNTY OF PALM BEACH
This plat was filed for record at _____ M. this _____ day of _____ 1995, and duly recorded in Plat Book No. _____ on Pages _____ thru _____.
DOROTHY H. WILKEN
Clerk Circuit Court
By _____ D. C.

*PT. 76-139
5/2/2/I*

PALM BEACH COUNTY
CONTROL POINT "PBF-45"



TAZ-740

BOOK 75
PAGE 15
FLOOD MAP #170A
ZONING RE/PD
QUAD #49
SE
PUD NAME Sherbrooke P.U.D.
5/15/95

PARCEL B
SHERBROOKE PUD

0309-011 75/15

GREENBRIAR I OF SHERBROOKE

PALM BEACH COUNTY
CONTROL POINT "PBF-46"
90N=814604.879
90E=92186.415

SCALE FACTOR USED FOR
STATE PLANE COORDINATES
IS 1.0000216

THIS INSTRUMENT PREPARED BY:
James A. Davis, PLS
FOR GEE & JENSON, ENGINEERS-ARCHITECTS-PLANNERS, INC.
ONE HARVARD CIRCLE
WEST PALM BEACH, FLORIDA 33409