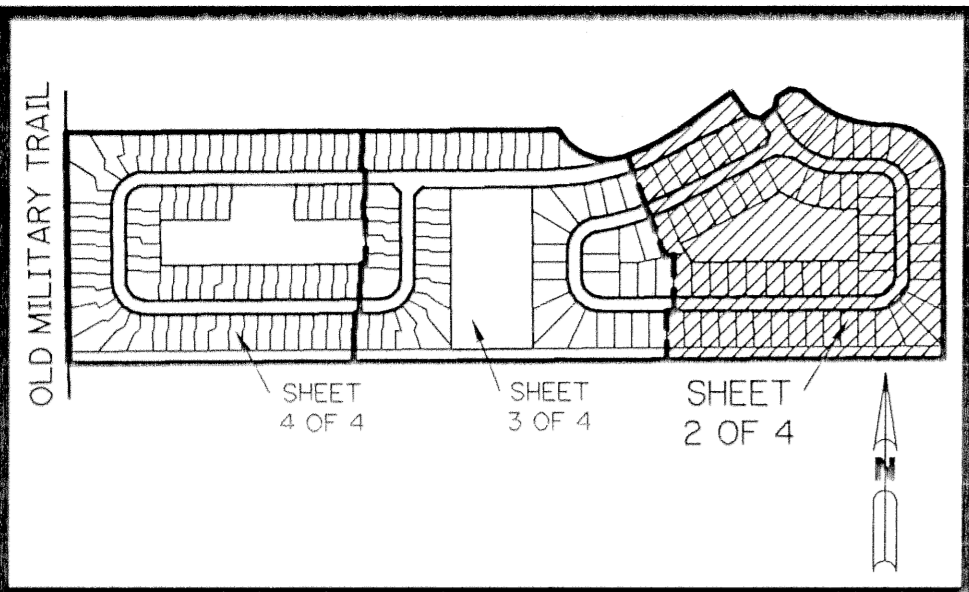


NAUTICA P.U.D. - PLAT TWO

A PARCEL OF LAND LYING IN SECTION 13,
TOWNSHIP 45 SOUTH, RANGE 42 EAST, CITY OF BOYNTON BEACH,
PALM BEACH COUNTY, FLORIDA.

SHEET 2 OF 4 JANUARY, 1995

A PLANNED UNIT DEVELOPMENT



KEY MAP
N.T.S.

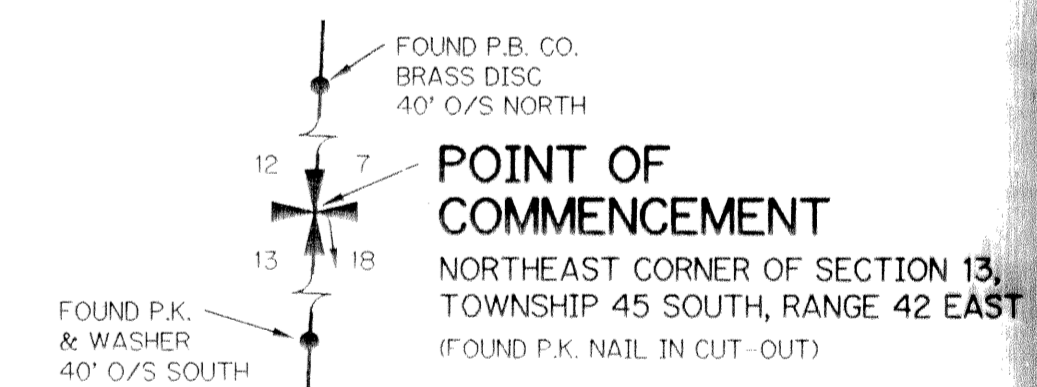
NAUTICA - PLAT ONE
(P.B. 74, PGS. 170-175)

NAUTICA - PLAT ONE
(P.B. 74, PGS. 170-175)

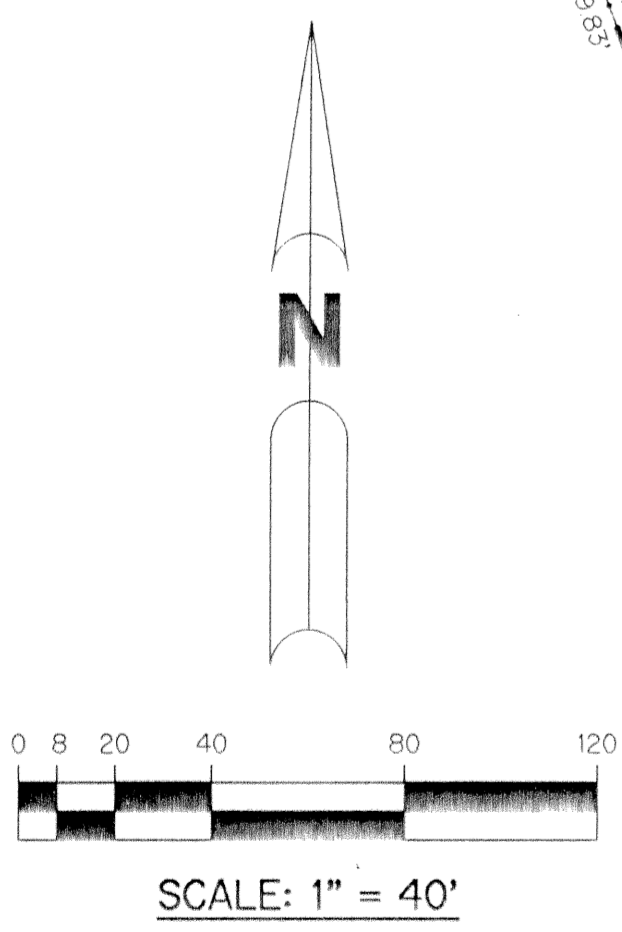
THIS INSTRUMENT PREPARED BY
WILBUR F. DIVINE, P.L.S. 4190, STATE OF FLORIDA
LAWSON, NOBLE AND ASSOCIATES, INC.
ENGINEERS PLANNERS SURVEYORS
WEST PALM BEACH, FLORIDA

LEGEND:

- - PERMANENT REFERENCE MONUMENT, PLS #4190
- - PERMANENT CONTROL POINT, PLS #4190
- Δ - DELTA ANGLE
- A - ARC LENGTH
- BE - BUFFER EASEMENT
- DE - DRAINAGE EASEMENT
- LA.E. - LIMITED ACCESS EASEMENT
- L.M.A.E. - LAKE MAINTENANCE ACCESS EASEMENT
- L.M.E. - LAKE MAINTENANCE EASEMENT
- L.W.D.D. - LAKE WORTH DRAINAGE DISTRICT
- ME - DRAINAGE, MAINTENANCE AND OVERHANG EASEMENT
- NR - NOT RADIAL
- N.T.S. - NOT TO SCALE
- O.R.B. - OFFICIAL RECORD BOOK
- P.B. - PLAT BOOK
- PGS. - PAGES
- P.L.S. - PROFESSIONAL LAND SURVEYOR
- R - RADIUS
- R/W - RIGHT-OF-WAY
- S.T. - SURVEY TIE
- U.E. - UTILITY EASEMENT

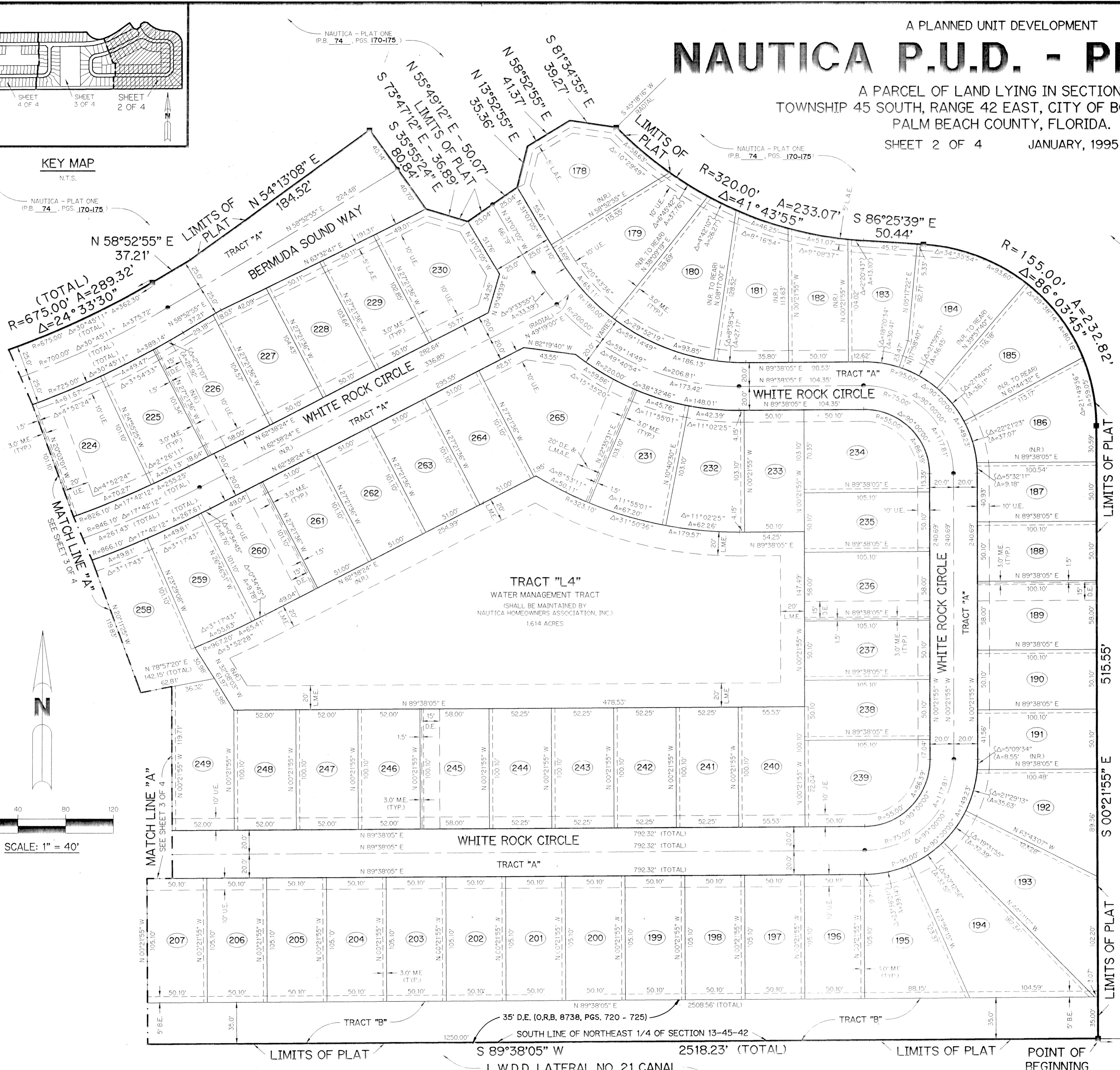


POINT OF COMMENCEMENT
NORTHEAST CORNER OF SECTION 13,
TOWNSHIP 45 SOUTH, RANGE 42 EAST
(FOUND P.K. NAIL IN CUT-OUT)



SCALE: 1" = 40'

SUBDIVISION * Nautica P.U.D. - Plat 2
BOOK 75 PAGE 34 FLOOD MAP *
QUAD # ZONING *
SE ZIP CODE *
PUD NAME C/Boynton Bch



EAST QUARTER CORNER OF SECTION 13, TOWNSHIP 45 SOUTH, RANGE 42 EAST