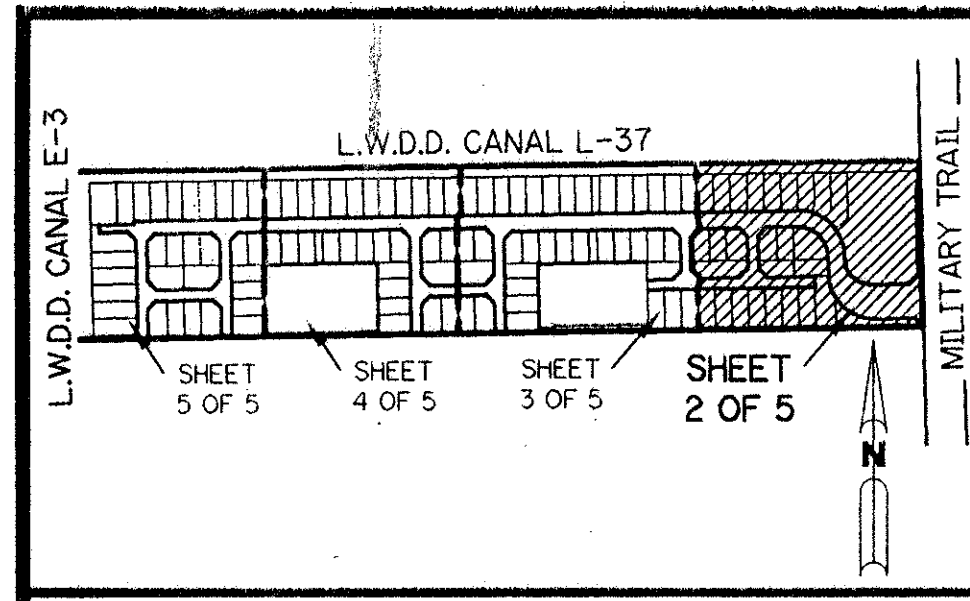


A PLANNED UNIT DEVELOPMENT

# VENTURA P.U.D.

THE NORTH ONE-HALF OF THAT PART OF THE NORTH ONE-HALF OF THE SOUTHEAST ONE-QUARTER OF SECTION 26, TOWNSHIP 46 SOUTH, RANGE 42 EAST, PALM BEACH COUNTY, FLORIDA, LYING SOUTH OF LAKE WORTH DRAINAGE DISTRICT LATERAL NO. 37, LESS THE RIGHT-OF-WAY OF STATE ROAD 809 (MILITARY TRAIL).

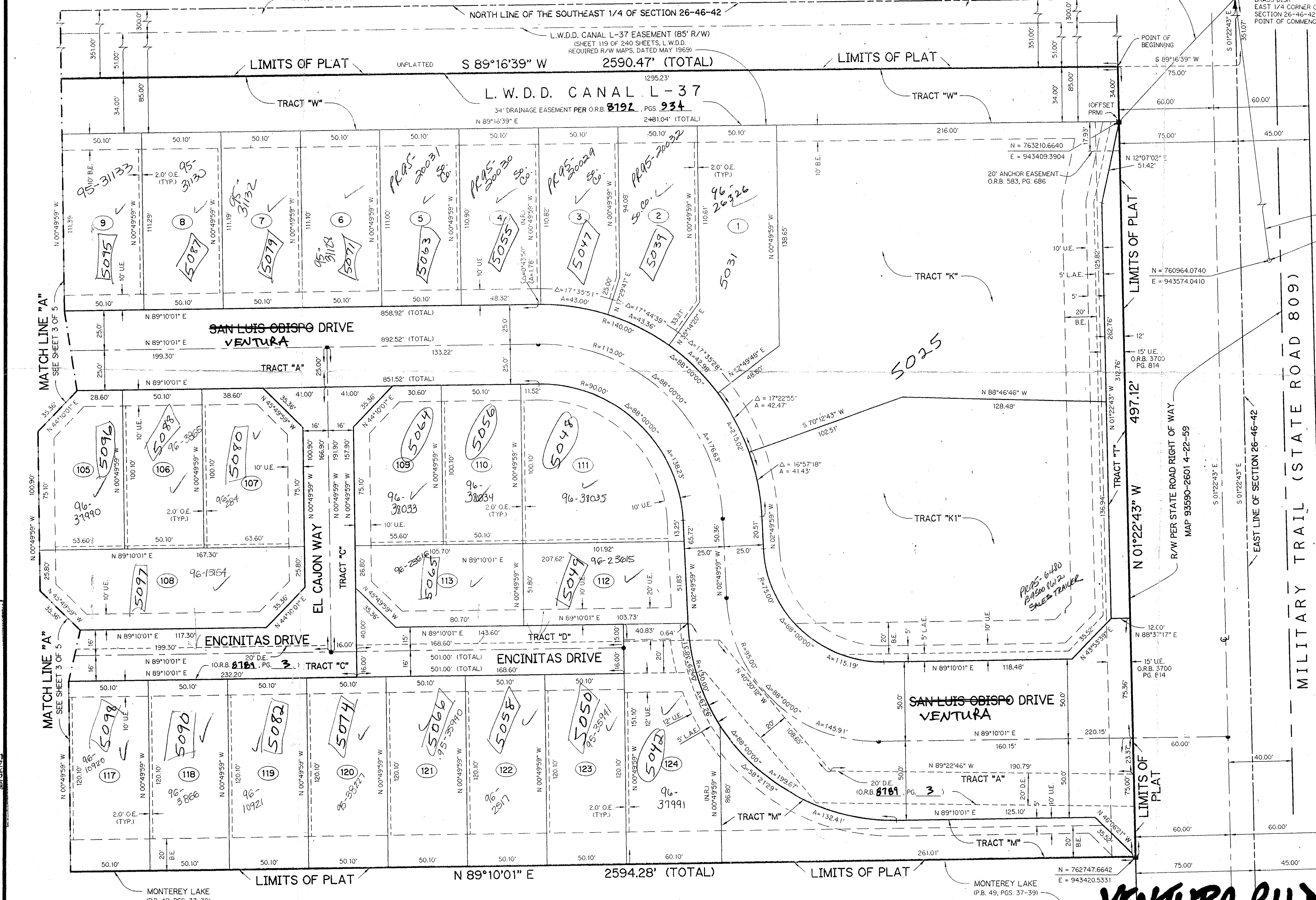
SHEET 2 OF 5 MARCH, 1995



KEY MAP  
N.T.S.

PLAT 1 OF LA CASA  
(P.B. 58, PGS. 187-190)

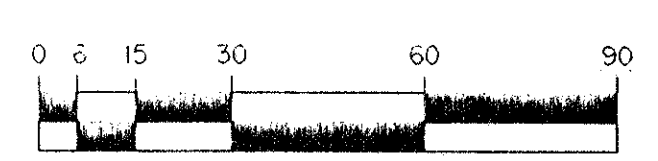
PLAT 1 OF LA CASA  
(P.B. 58, PGS. 187-190)



N 09°40'00" E 391.48' (GRID)  
N 09°40'00" E 391.47' (GROUND)

N = 763596.5870  
E = 943475.1270

P.B. COUNTY BRASS DISK EAST 1/4 CORNER OF SECTION 26-46-42 POINT OF COMMENCEMENT



SCALE: 1" = 30'

S 02°09'07" E 2634.37' (GRID)  
S 02°09'07" E 2634.29' (GROUND)

P.K. & BRASS WASHER STAMPED "N.E. CORNER"

### LEGEND:

- - PERMANENT REFERENCE MONUMENT, PLS #4190
- ▲ - PERMANENT CONTROL POINT, PLS #4190
- Δ - DELTA ANGLE
- A - ARC LENGTH
- BE - BUFFER EASEMENT
- DE - DRAINAGE EASEMENT
- L.M.A.E. - LAKE MAINTENANCE ACCESS EASEMENT
- L.A.E. - LIMITED ACCESS EASEMENT
- L.M.E. - LAKE MAINTENANCE EASEMENT
- L.W.D.D. - LAKE WORTH DRAINAGE DISTRICT
- NR - NOT RADIAL
- N.T.S. - NOT TO SCALE
- O.E. - OVERHANG EASEMENT AND MAINTENANCE EASEMENT
- O.R.B. - OFFICIAL RECORD BOOK
- P.B. - PLAT BOOK
- PGS. - PAGES
- P.L.S. - PROFESSIONAL LAND SURVEYOR
- P.U.D. - PLANNED UNIT DEVELOPMENT
- R - RADIUS
- R/W - RIGHT-OF-WAY
- S.T. - SURVEY TIE
- U.E. - UTILITY EASEMENT
- N = 1000.0000 - STATE PLANE COORDINATES
- E = 1000.0000 - CENTERLINE

DEL-AIRE GOLF CLUB SECOND ADDITION  
(P.B. 39, PGS. 66-67)

SEE MILITARY TRAIL PUD

DEL AIRE GOLF CLUB  
(P.B. 35, PGS. 1-4)

THIS INSTRUMENT PREPARED BY  
WILBUR F. DIVINE, P.L.S. 4190, STATE OF FLORIDA  
LAWSON, NOBLE AND ASSOCIATES, INC.  
ENGINEERS PLANNERS SURVEYORS  
WEST PALM BEACH, FLORIDA

75/43

0648-001  
SHEET 2 OF 5

# VENTURA P.U.D.

VISION Ventura PUD  
PAGE 43  
FLOOD MAP # 2200  
ZONING PUD  
809 + 37  
94-59  
NAME  
DATE

TAR 476

MONTEREY LAKE  
(P.B. 49, PGS. 37-39)

MONTEREY LAKE  
(P.B. 49, PGS. 37-39)

N = 762747.6642  
E = 943420.5331