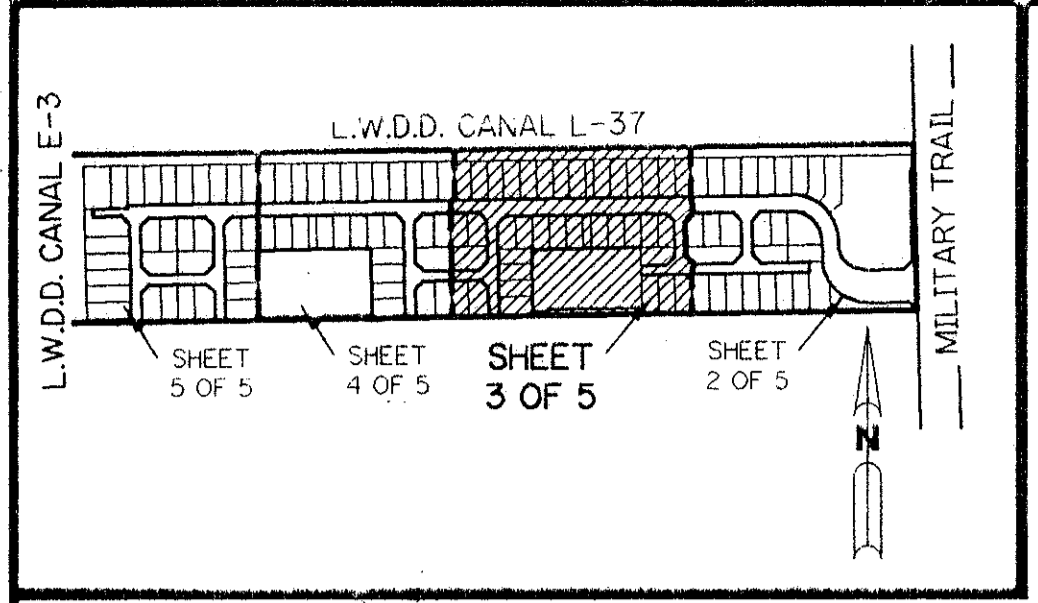


A PLANNED UNIT DEVELOPMENT

VENTURA P.U.D.

THE NORTH ONE-HALF OF THAT PART OF THE NORTH ONE-HALF OF THE SOUTHEAST ONE-QUARTER OF SECTION 26, TOWNSHIP 46 SOUTH, RANGE 42 EAST, PALM BEACH COUNTY, FLORIDA, LYING SOUTH OF LAKE WORTH DRAINAGE DISTRICT LATERAL NO. 37, LESS THE RIGHT-OF-WAY OF STATE ROAD 809 (MILITARY TRAIL).

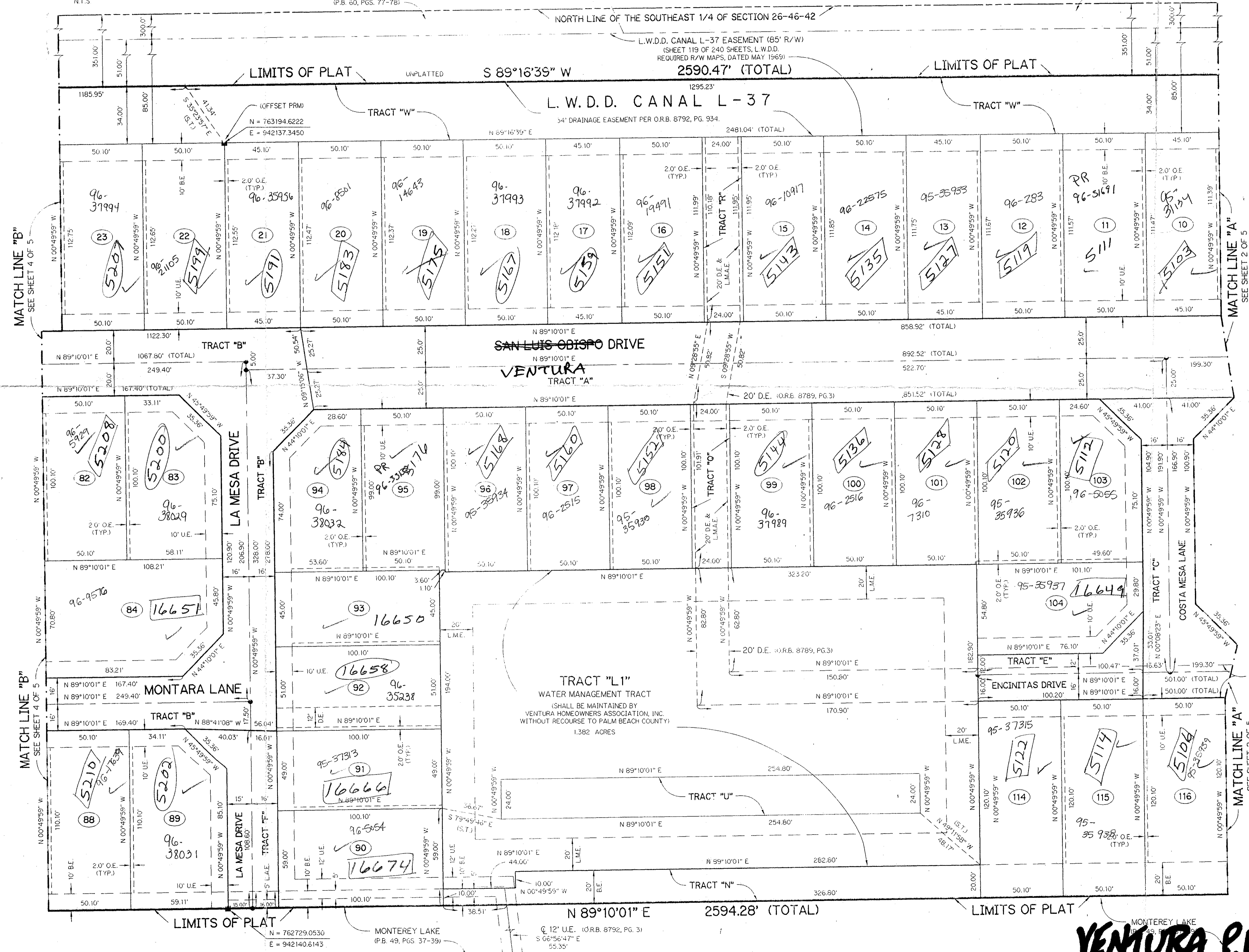
SHEET 3 OF 5 MARCH, 1995



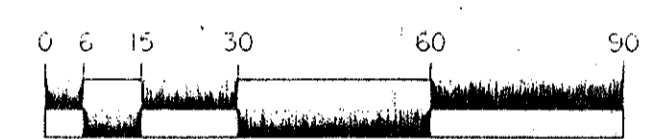
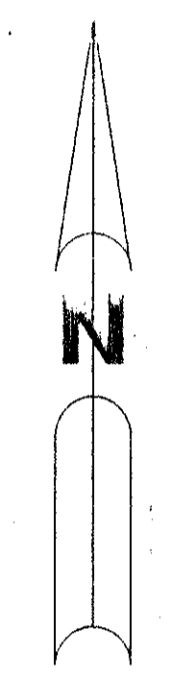
KEY MAP NTS

PLAT 2 OF LA CASA (P.B. 60, PGS. 77-78)

PLAT 1 OF LA CASA (P.B. 58, PGS. 187-190)



PET. 94-59
ALOC. #0001
5/3/3/K



SCALE: 1" = 30'

LEGEND:

- - PERMANENT REFERENCE MONUMENT, PLS #4190
- ▲ - PERMANENT CONTROL POINT, PLS #4190
- ∠ - DELTA ANGLE
- A - ARC LENGTH
- B.E. - BUFFER EASEMENT
- D.E. - DRAINAGE EASEMENT
- L.M.A.E. - LAKE MAINTENANCE ACCESS EASEMENT
- L.A.E. - LIMITED ACCESS EASEMENT
- L.M.E. - LAKE MAINTENANCE EASEMENT
- L.W.D.D. - LAKE WORTH DRAINAGE DISTRICT
- N.R. - NOT RADIAL
- N.T.S. - NOT TO SCALE
- O.E. - OVERHANG EASEMENT AND MAINTENANCE EASEMENT
- O.R.B. - OFFICIAL RECORD BOOK
- P.B. - PLAT BOOK
- P.G.S. - PAGES
- P.L.S. - PROFESSIONAL LAND SURVEYOR
- P.U.D. - PLANNED UNIT DEVELOPMENT
- R - RADIUS
- R/W - RIGHT-OF-WAY
- S.T. - SURVEY TIE
- U.E. - UTILITY EASEMENT
- N = 1000.0000 - STATE PLANE COORDINATES
- E = 1000.0000 - STATE PLANE COORDINATES

SUBDIVISION * Ventura P.U.D.
BOOK 75 PAGE 44
FLOOD MAP # 2208
QUAD # 37
SE 94-59
PUD NAME same.
ZIP CODE 33445

TAZ 476

SEE MILITARY TRAIL PUD

THIS INSTRUMENT PREPARED BY
WILBUR F. DIVINE, P.L.S. 4190, STATE OF FLORIDA
LAWSON, NOBLE AND ASSOCIATES, INC.
ENGINEERS PLANNERS SURVEYORS
WEST PALM BEACH, FLORIDA

75/44
0648-001

VENTURA P.U.D.