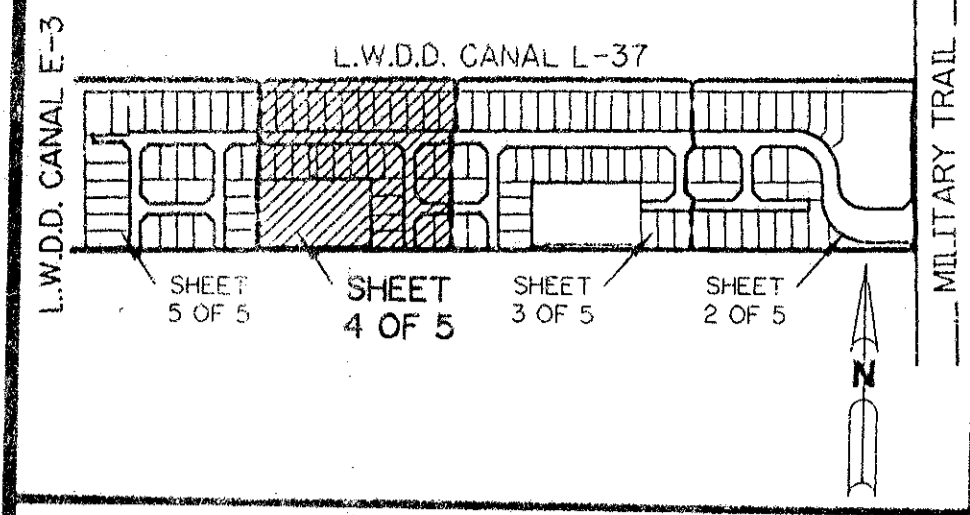


A PLANNED UNIT DEVELOPMENT

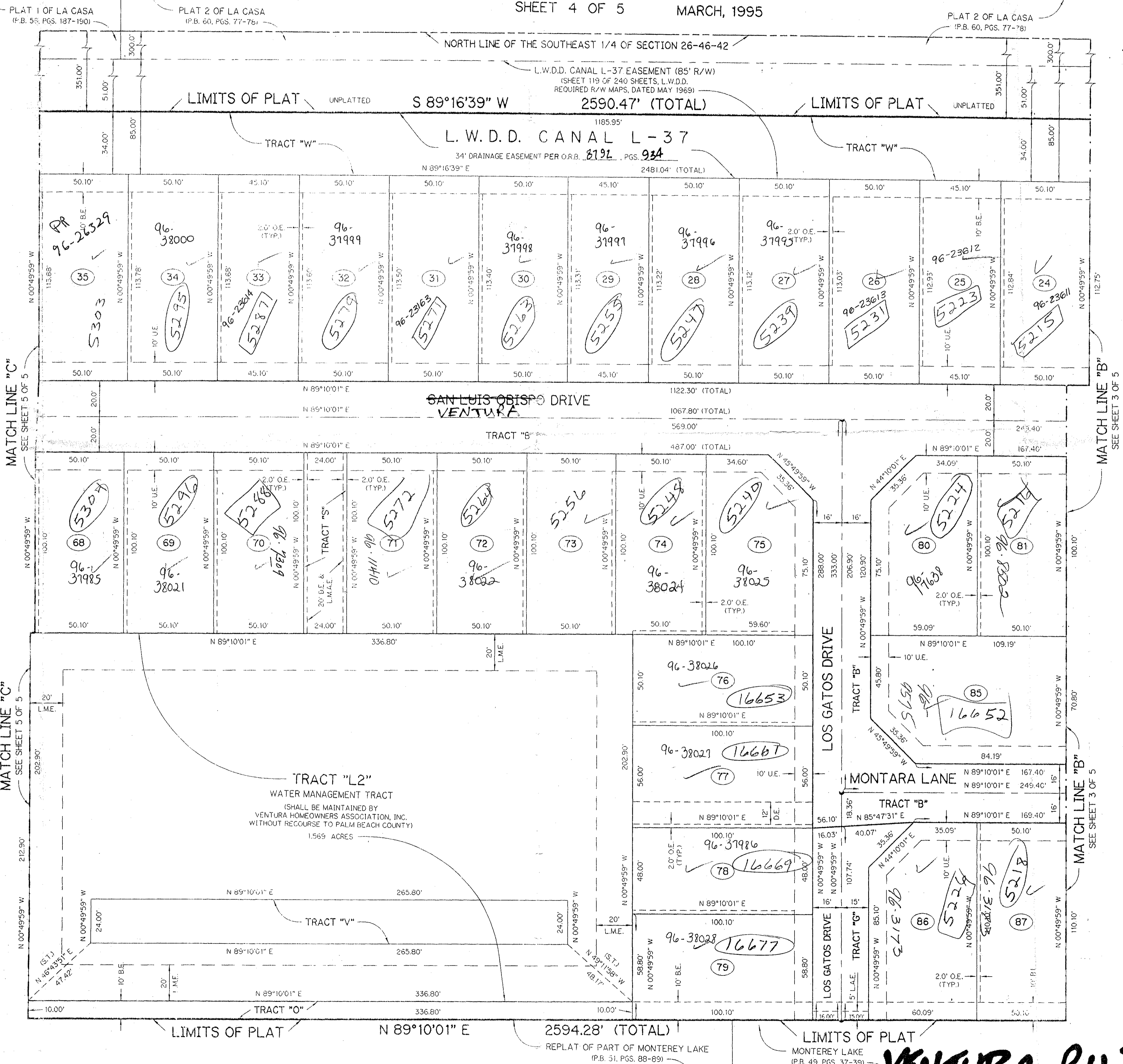
VENTURA P.U.D.

THE NORTH ONE-HALF OF THAT PART OF THE NORTH ONE-HALF OF THE SOUTHEAST ONE-QUARTER OF SECTION 26, TOWNSHIP 46 SOUTH, RANGE 42 EAST, PALM BEACH COUNTY, FLORIDA, LYING SOUTH OF LAKE WORTH DRAINAGE DISTRICT LATERAL NO. 37, LESS THE RIGHT-OF-WAY OF STATE ROAD 809 (MILITARY TRAIL).

SHEET 4 OF 5 MARCH, 1995

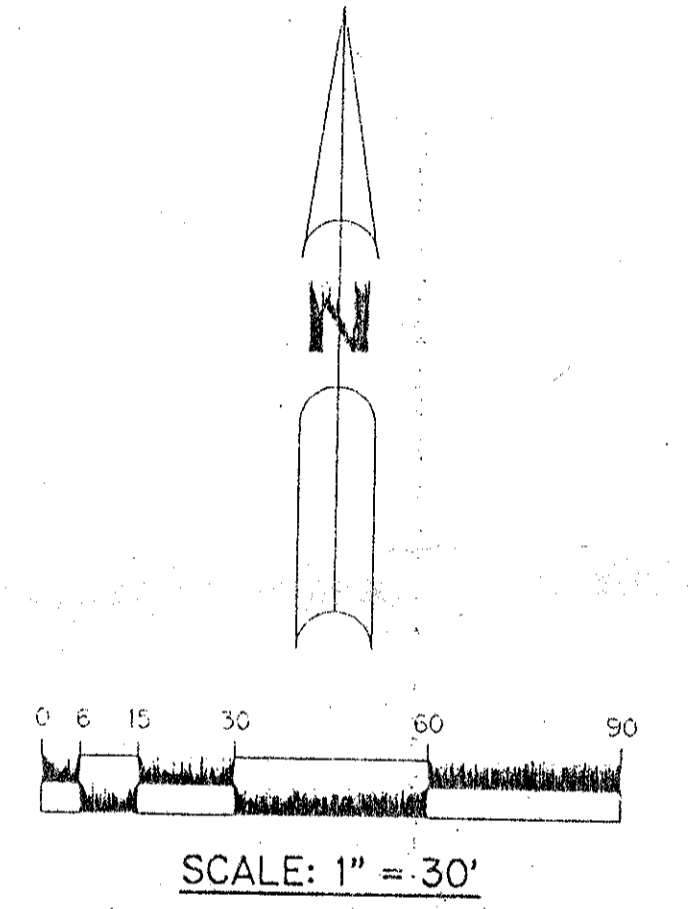


KEY MAP N.T.S.



- LEGEND:**
- M - PERMANENT REFERENCE MONUMENT, PLS #4190
 - Δ - PERMANENT CONTROL POINT, PLS #4190
 - Δ - DELTA ANGLE
 - A - ARC LENGTH
 - BE - BUFFER EASEMENT
 - DE - DRAINAGE EASEMENT
 - L.M.A.E. - LAKE MAINTENANCE ACCESS EASEMENT
 - L.A.E. - LIMITED ACCESS EASEMENT
 - L.M.E. - LAKE MAINTENANCE EASEMENT
 - L.W.D.D. - LAKE WORTH DRAINAGE DISTRICT
 - N.R. - NOT RADIAL
 - N.T.S. - NOT TO SCALE
 - O.E. - OVERHANG EASEMENT AND MAINTENANCE EASEMENT
 - O.R.B. - OFFICIAL RECORD BOOK
 - P.B. - PLAT BOOK
 - P.G.S. - PAGES
 - P.L.S. - PROFESSIONAL LAND SURVEYOR
 - P.U.D. - PLANNED UNIT DEVELOPMENT
 - R - RADIUS
 - R/W - RIGHT-OF-WAY
 - S.T. - SURVEY TIE
 - U.E. - UTILITY EASEMENT
 - N = 1000.0000 - STATE PLANE COORDINATES
 - E = 1000.0000

PET. 94-59
ALLOC. #0001
5/3/3/K



SUBDIVISION - Ventura P.U.D.
BOOK 76 PAGE 45
FLOOD ZONE B
QUAD #37
SE 24-57
PUB NAME SAME
SEE 16742

THIS INSTRUMENT PREPARED BY
WILBUR F. DIVINE, P.L.S. 4190, STATE OF FLORIDA
LAWSON, NOBLE AND ASSOCIATES, INC.
ENGINEERS PLANNERS SURVEYORS
WEST PALM BEACH, FLORIDA

75/45

0648-001

VENTURA P.U.D.