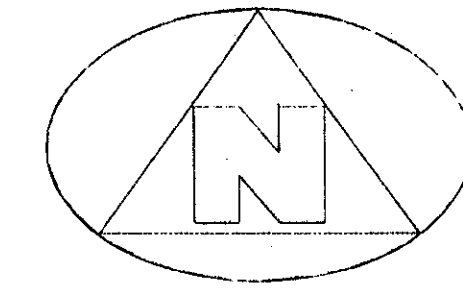


QUAIL WOODS

(A P.U.D.)

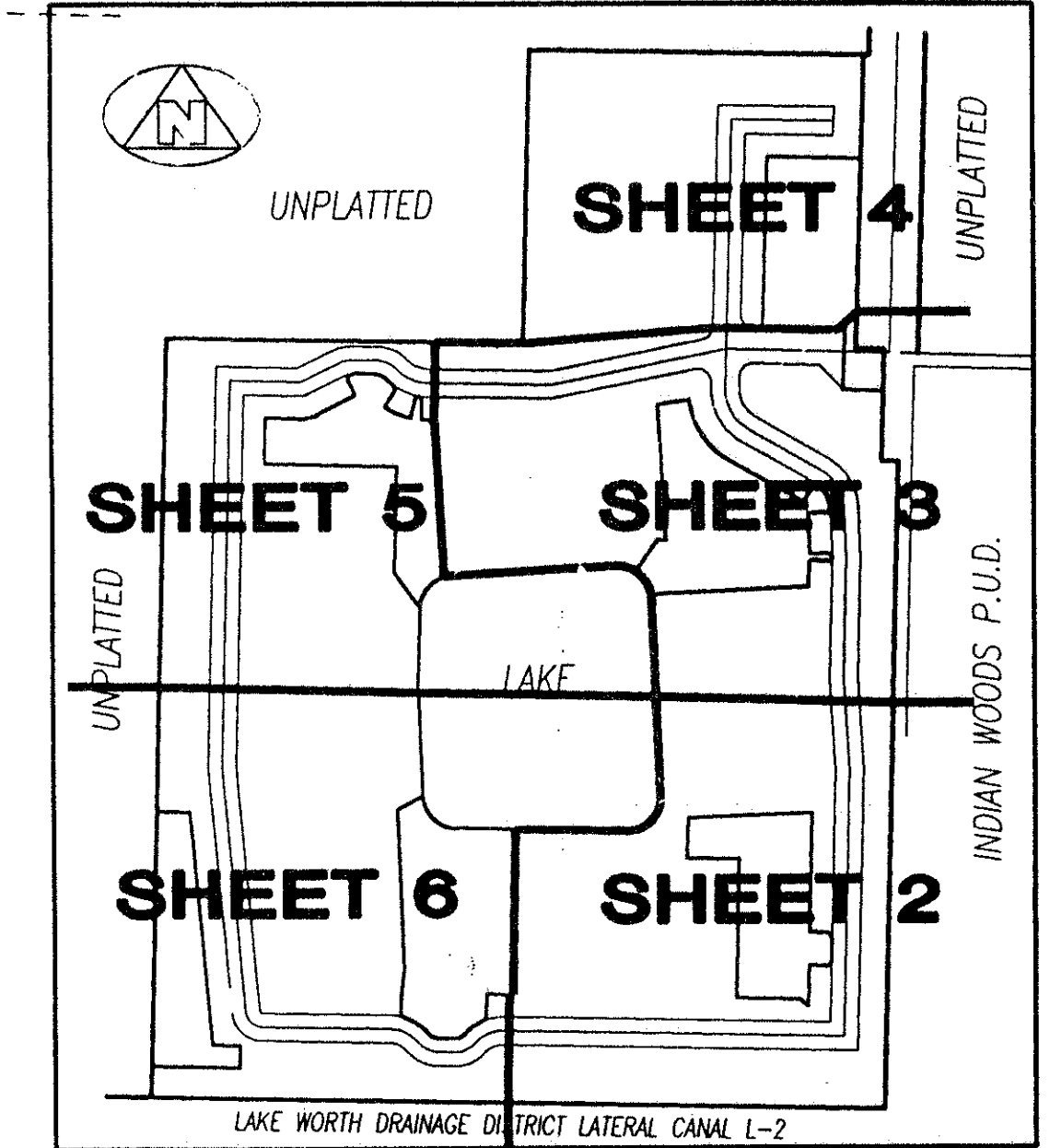
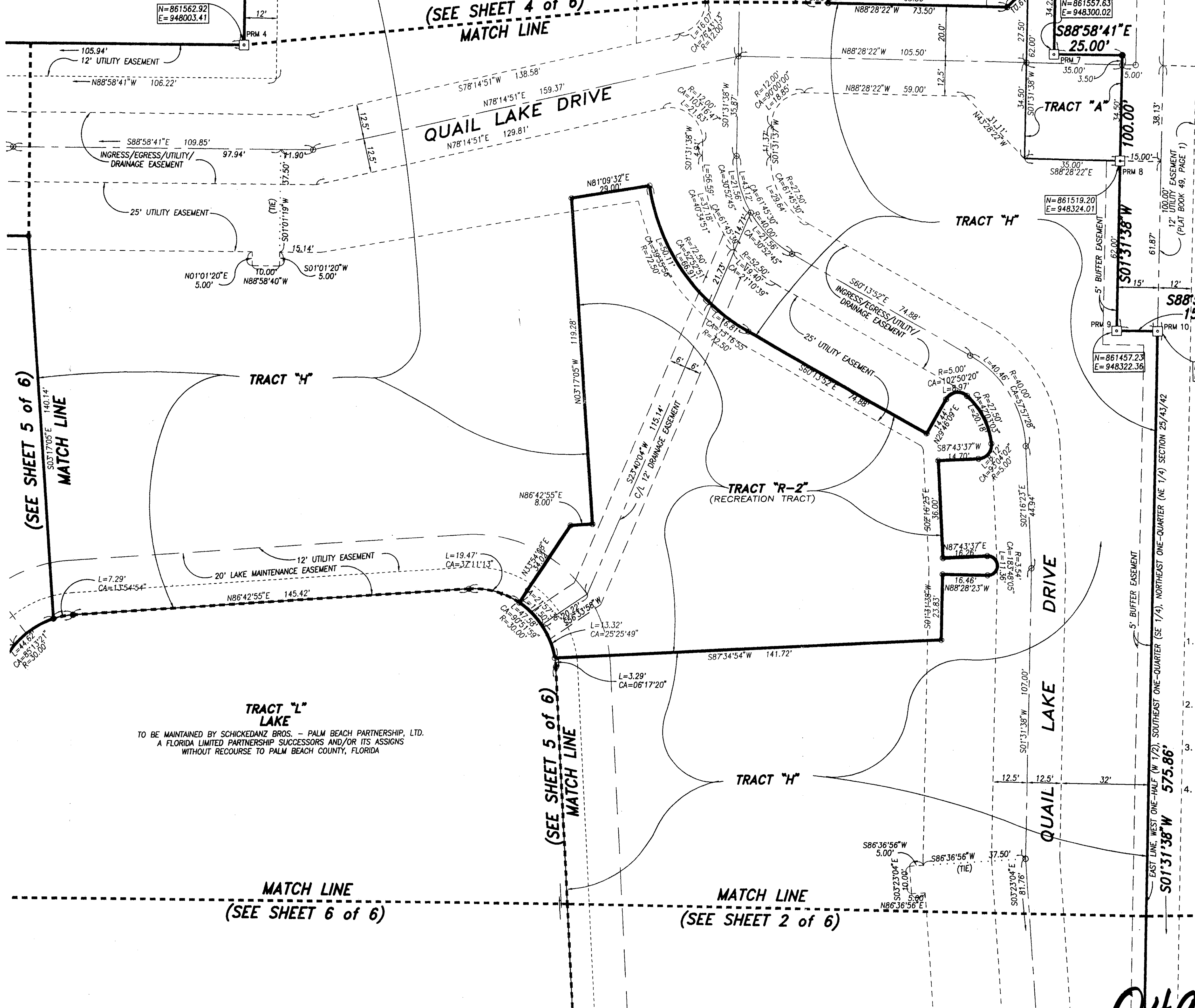
LYING IN THE NORTHEAST ONE-QUARTER OF SECTION 25, TOWNSHIP 43 SOUTH, RANGE 42 EAST, PALM BEACH COUNTY, FLORIDA



0 10' 20' 40'
GRAPHIC SCALE
(IN FEET)
SCALE: 1" = 20'

UNPLATTED

UNPLATTED



KEY MAP

SURVEYOR'S NOTES AND LEGEND:

1. BEARINGS SHOWN OR STATED HEREON, ARE BASED ON, OR ARE RELATIVE TO THE ASSUMED BEARING OF NORTH 88°50'49" WEST ALONG THE SOUTH LINE, NORTHEAST ONE-QUARTER OF SECTION 25, TOWNSHIP 43 SOUTH, RANGE 42 EAST.
2. IN THOSE INSTANCES WHERE UTILITY/DRAINAGE STRUCTURES ARE CONSTRUCTED IN CONFLICT WITH THE PLATTED PERMANENT CONTROL POINTS (P.C.P.) POSITION, STRADDLERS MONUMENTED AS PERMANENT CONTROL POINTS WILL BE SET TO REFERENCE THE PLATTED P.C.P. POSITION.
3. LINES WHICH INTERSECT CURVES ARE NOT RADIAL, UNLESS OTHERWISE NOTED.
4. C/L DENOTES A CENTERLINE
5. PRM DENOTES A SET #2424 PERMANENT REFERENCE MONUMENT (P.R.M.)
6. PCP DENOTES A SET #2424 PERMANENT CONTROL POINT (P.C.P.)
7. PRM DENOTES A FOUND #2424 PERMANENT REFERENCE MONUMENT (P.R.M.)
8. PCP DENOTES A FOUND #2424 PERMANENT CONTROL POINT (P.C.P.)
9. N=860909.29 DENOTES NORTHING STATE PLANE GRID COORDINATE
10. E=948322.77 DENOTES EASTING STATE PLANE GRID COORDINATE

COORDINATE, DISTANCE, AND BEARING NOTES:

1. THE COORDINATES SHOWN HEREON ARE STATE PLANE GRID COORDINATES ACCORDING TO THE TRANSVERSE MERCATOR PROJECTION OF THE FLORIDA EAST ZONE, N.A.D. 83, PER THE 1990 ADJUSTMENT.
2. THE LINEAR DIMENSIONS SHOWN HEREON ARE GROUND DISTANCES IN U.S. FEET AND DECIMAL PARTS THEREOF.
3. THE GROUND DISTANCE TO GRID DISTANCE SCALE FACTOR IS 1.0000395 (GROUND DISTANCE X SCALE FACTOR = GRID DISTANCE)
4. THE COMMON LINE BETWEEN THIS PLAT AND THE PALM BEACH COUNTY SECTIONAL DATUM (N.A.D. 83, 1990 ADJUSTMENT) IS THE SOUTH LINE OF THE NORTHEAST ONE-QUARTER OF SECTION 25, TOWNSHIP 43 SOUTH, RANGE 42 EAST.

COMMON LINE PLAT BEARING = N.88°50'49"W.

COMMON LINE GRID BEARING = N.88°50'51"W.

PLAT TO GRID BEARING COUNTERCLOCKWISE ROTATION = 00°00'02"

This instrument was prepared by Wm. R. Van Campen, R.L.S., in and for the offices of Bench Mark Land Surveying & Mapping, Inc., 4152 West Blue Heron Boulevard, Suite 121, Riviera Beach, Florida

BENCH MARK
Land Surveying and Mapping, Inc.
4152 West Blue Heron Blvd., Suite 121, Riviera Beach, FL 33404
WORLD WY 9839 (407) 846-2102

RECORD PLAT
QUAIL WOODS
A P.U.D.

DWN	DUM	FB	DATE	NO. #	P10
CKD	FILE	P10-A2.dwg	SCALE	1" = 20'	SHEET 3 OF 6

Subdivision * Quail Woods
BOOK 75 PAGE 51
FLOOD ZONE B FLOOD MAP #155B
QUAD # 31 ZONING R/H
SE 85-86(B) ZIP CODE 33409
PUD NAME SAME
25/43/12

T&Z 211

PET. 85-86
5/2/2/E

0491-002 75/51