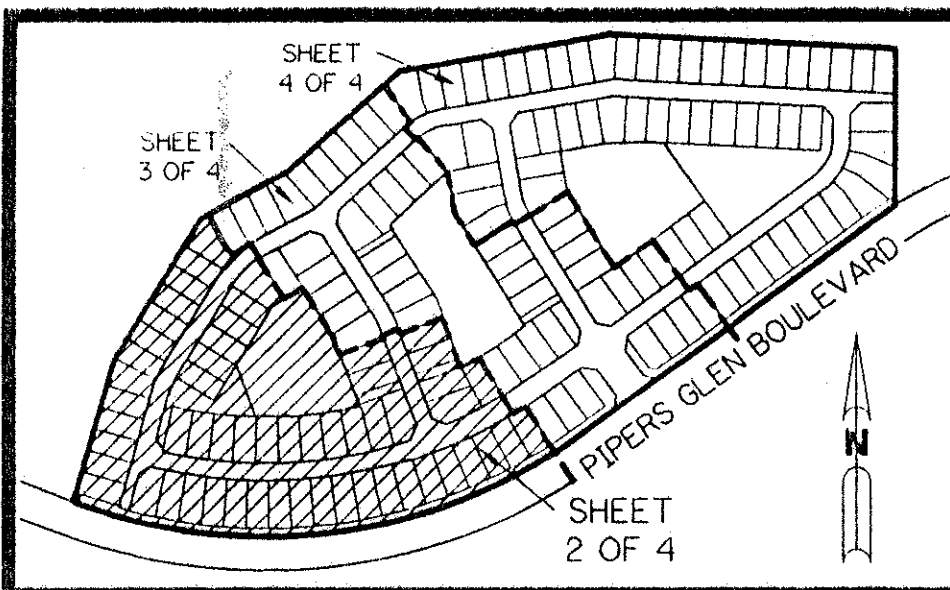


PIPERS GLEN - PARCEL "E"

BEING A PARCEL OF LAND LYING IN SECTIONS 3 AND 4, TOWNSHIP 46 SOUTH, RANGE 42 EAST, AND A PORTION OF TRACTS 1, 31, AND 32 OF BLOCK 64 OF PALM BEACH FARMS COMPANY PLAT NO. 3, AS RECORDED IN PLAT BOOK 2, PAGES 45 THROUGH 54, INCLUSIVE, AND THAT RIGHT-OF-WAY ABANDONED ACCORDING TO OFFICIAL RECORD BOOK 3566, PAGE 1728, OF THE PUBLIC RECORDS OF PALM BEACH COUNTY, FLORIDA.

SHEET 2 OF 4 MARCH, 1995



KEY MAP
N.T.S.

P.B. FARMS CO. PLAT No. 3
(P.B. 2, PGS. 45-54)

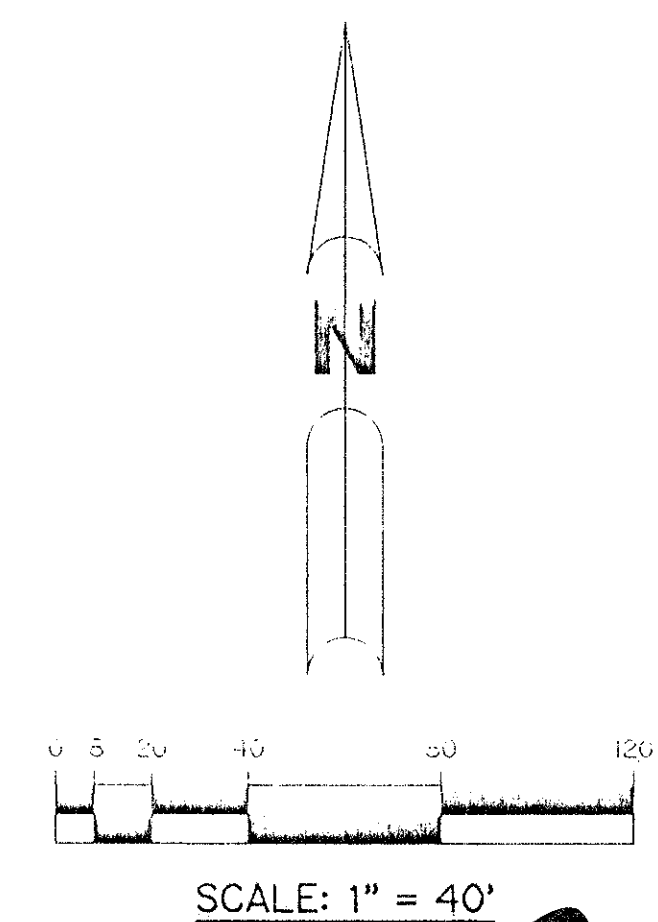
TRACT 2 TRACT 1
TRACT 31 TRACT 32

EAST LINE OF SECTION 4 - T46S - R42E
WEST LINE OF SECTION 3 - T46S - R42E

LEGEND:

- - PERMANENT REFERENCE MONUMENT, PLS #4213
- △ - PERMANENT CONTROL POINT, PLS #4213
- Δ - DELTA ANGLE
- A - ARC LENGTH
- B.E. - BUFFER EASEMENT
- D.E. - DRAINAGE EASEMENT
- L.M.A.E. - LAKE MAINTENANCE ACCESS EASEMENT
- L.M.E. - LAKE MAINTENANCE EASEMENT
- L.W.D.D. - LAKE WORTH DRAINAGE DISTRICT
- NR - NOT RADIAL
- N.T.S. - NOT TO SCALE
- N₆ - NUMBER
- O.E. - OVERHANG EASEMENT
- O.R.B. - OFFICIAL RECORD BOOK
- P.B. - PLAT BOOK
- PGS. - PAGES
- P.L.S. - PROFESSIONAL LAND SURVEYOR
- R - RADIUS
- R/W - RIGHT-OF-WAY
- S.T. - SURVEY TIE
- U.E. - UTILITY EASEMENT

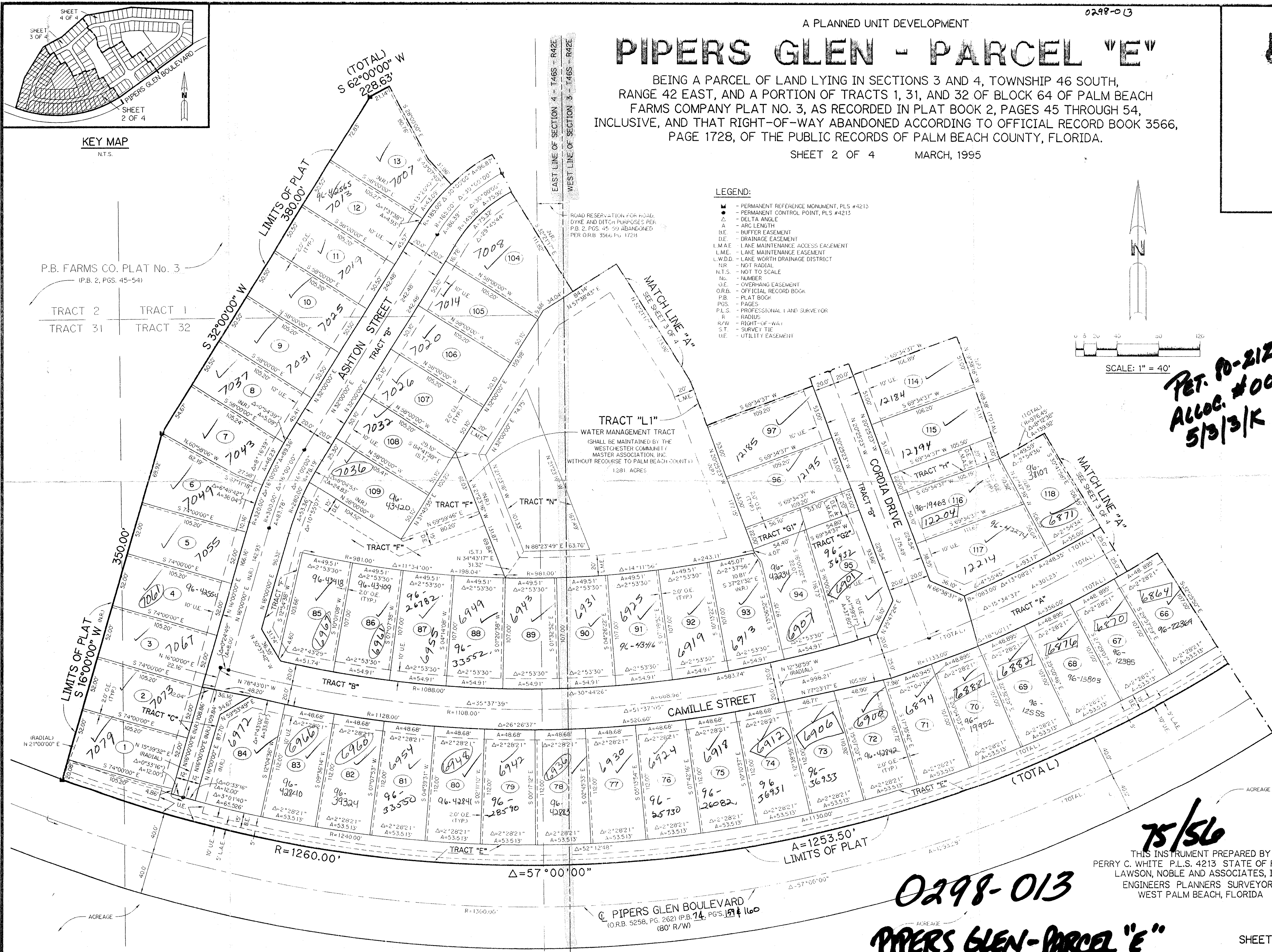
ROAD RESERVATION FOR ROAD, DYKE AND DITCH PURPOSES PER P.B. 2, PGS. 45-54 ABANDONED PER O.R.B. 3566 PG. 1728



PET. 80-212D
ALLOC. #0003
5/13/1K

SUBDIVISION - Pipers Glen Parcel E
BOOK 75 PAGE 56
FLOOD ZONE B
QUAD #36, S1
SE 20-212
PUD NAME SCALC
3/7/46/42

T42456



75/56

THIS INSTRUMENT PREPARED BY
PERRY C. WHITE P.L.S. 4213 STATE OF FLORIDA
LAWSON, NOBLE AND ASSOCIATES, INC.
ENGINEERS PLANNERS SURVEYORS
WEST PALM BEACH, FLORIDA

0298-013

PIPERS GLEN - PARCEL "E"