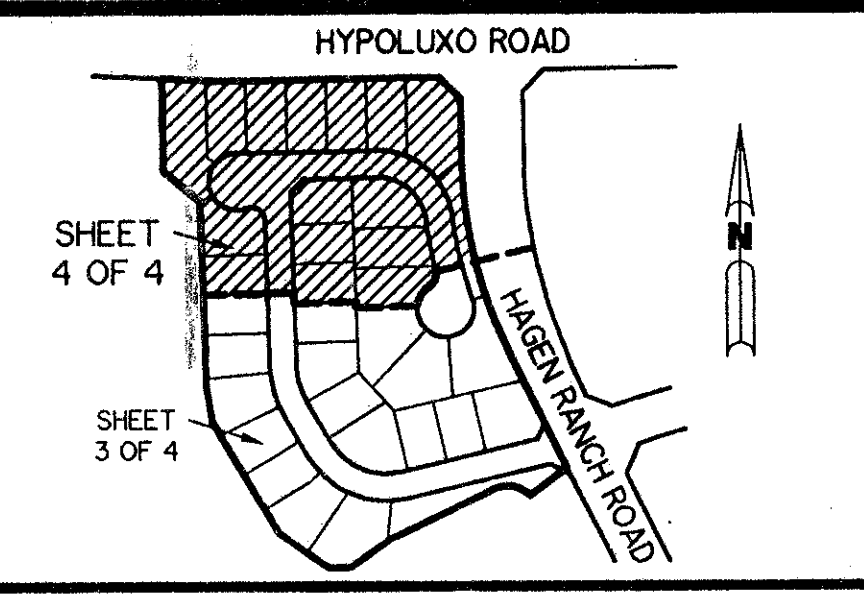


A PART OF LAKE CHARLESTON PLANNED UNIT DEVELOPMENT

LAKE CHARLESTON - TRACT "CC"

BEING A REPLAT OF ALL OF CHURCH TRACT 1 AND BUFFER TRACT 1 AS SHOWN ON LAKE CHARLESTON PLAT NO. 3 AS RECORDED IN PLAT BOOK 62, PAGES 55 THROUGH 68, INCLUSIVE, OF THE PUBLIC RECORDS OF PALM BEACH COUNTY, FLORIDA, AND A PORTION OF TRACTS 1, 2, 31, 32 AND A PORTION OF ABANDONED ROAD RIGHT OF WAY, BLOCK 41, PALM BEACH FARMS COMPANY PLAT NO. 3 AS RECORDED IN PLAT BOOK 2, PAGES 45 THROUGH 54, INCLUSIVE, OF SAID PALM BEACH COUNTY PUBLIC RECORDS. LYING IN SECTIONS 4 AND 9, TOWNSHIP 45 SOUTH, RANGE 42 EAST

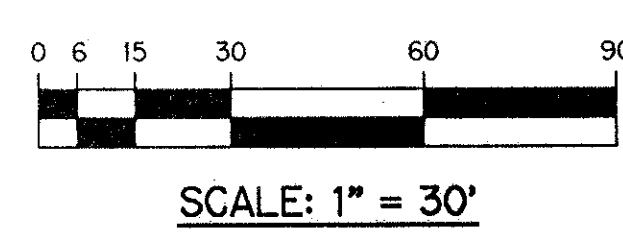
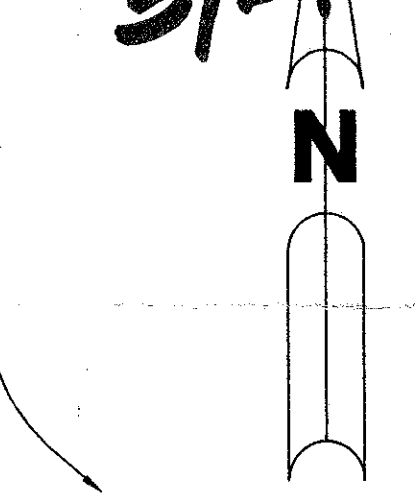
SHEET 4 OF 4 MARCH 1995



KEY MAP N.T.S.

THIS INSTRUMENT PREPARED BY
WILBUR F. DIVINE, P.L.S. 4190, STATE OF FLORIDA
LAWSON, NOBLE AND ASSOCIATES, INC.
ENGINEERS PLANNERS SURVEYORS
WEST PALM BEACH, FLORIDA

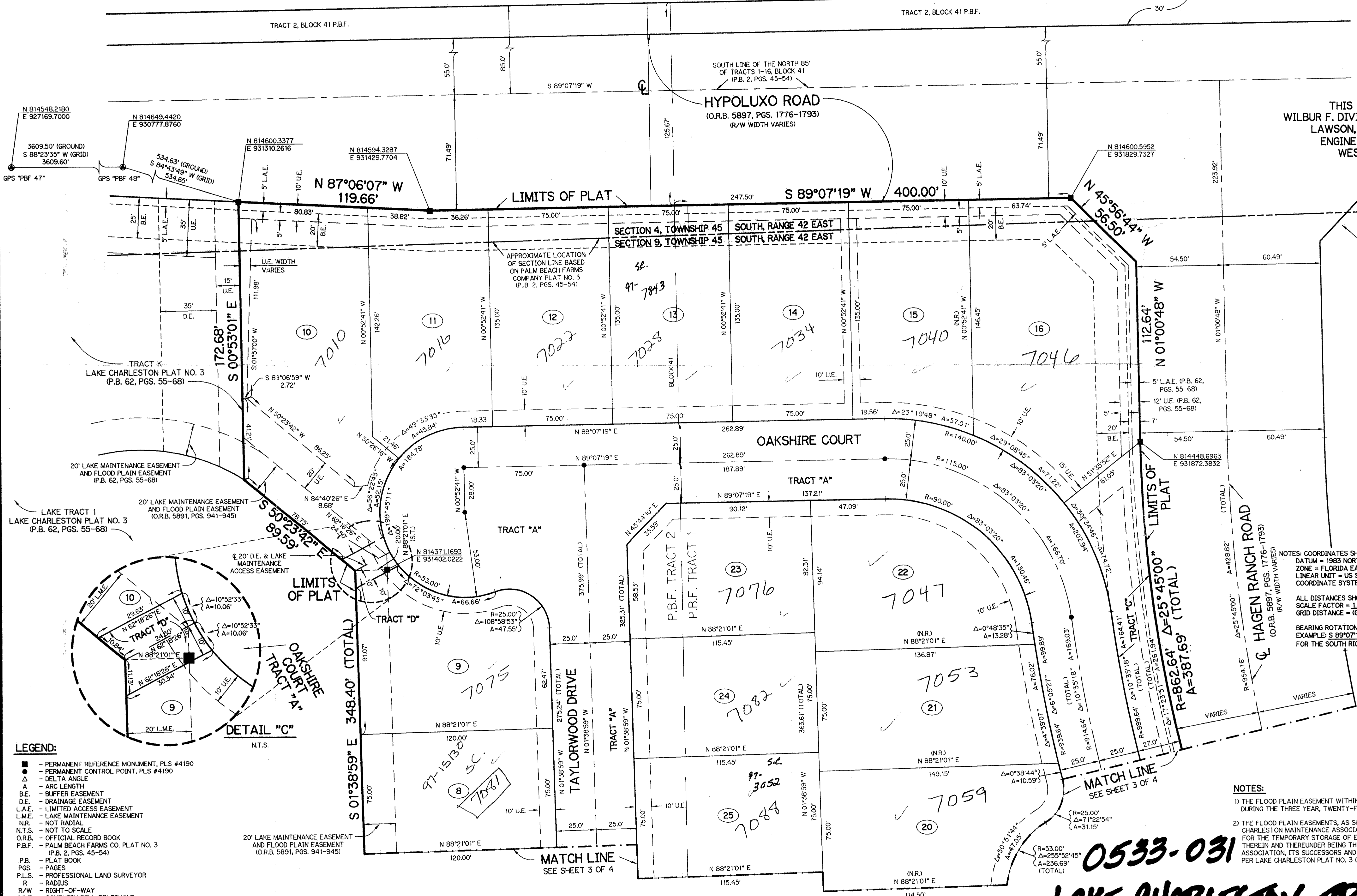
*PET. 86-96D
AVOC. #0001
5/2/2/I*



SCALE: 1" = 30'

TAZ 439

SUBDIVISION - Lake Charleston Tract "CC"
BOOK 75 FLOOD MAP #185A
FLOOD ZONE B ZONING RTS
QUAD # 49 ZIP CODE 33467
SE 86-96
PUD NAME - 914514



- LEGEND:**
- - PERMANENT REFERENCE MONUMENT, PLS #4190
 - - PERMANENT CONTROL POINT, PLS #4190
 - Δ - DELTA ANGLE
 - A - ARC LENGTH
 - B.E. - BUFFER EASEMENT
 - D.E. - DRAINAGE EASEMENT
 - L.A.E. - LIMITED ACCESS EASEMENT
 - L.M.E. - LAKE MAINTENANCE EASEMENT
 - N.R. - NOT RADIAL
 - N.T.S. - NOT TO SCALE
 - O.R.B. - OFFICIAL RECORD BOOK
 - P.B.F. - PALM BEACH FARMS CO. PLAT NO. 3 (P.B. 2, PGS. 45-54)
 - P.B. - PLAT BOOK
 - PGS. - PAGES
 - P.L.S. - PROFESSIONAL LAND SURVEYOR
 - R - RADIUS
 - R/W - RIGHT-OF-WAY
 - S.B.T. - SOUTHERN BELL TELEPHONE
 - S.T. - SURVEY TIE
 - U.E. - UTILITY EASEMENT

NOTES: COORDINATES SHOWN ARE GRID COORDINATES
DATUM = 1983 NORTH AMERICAN DATUM (1990 ADJUSTMENT)
ZONE = FLORIDA EAST ZONE
LINEAR UNIT = US SURVEY FEET
COORDINATE SYSTEM = 1983 STATE PLANE TRANSVERSE MERCATOR PROJECTION

ALL DISTANCES SHOWN ARE GROUND DISTANCES UNLESS OTHERWISE NOTED
SCALE FACTOR = 1.0000284
GRID DISTANCE = (GROUND DISTANCE) x (SCALE FACTOR)

BEARING ROTATION (PLAT TO GRID) = -0°01'10" (COUNTER CLOCKWISE)
EXAMPLE: S 89°07'19" W (PLAT BEARING) = S 89°06'09" W (GRID BEARING)
FOR THE SOUTH RIGHT OF WAY LINE OF HYPOLUXO ROAD.

NOTES:

- 1) THE FLOOD PLAIN EASEMENT WITHIN THE REAR OF EACH LOT IS SUBJECT TO FLOODING DURING THE THREE YEAR, TWENTY-FOUR HOUR RAINFALL EVENT.
- 2) THE FLOOD PLAIN EASEMENTS, AS SHOWN HEREON, HAVE BEEN DEDICATED TO THE LAKE CHARLESTON MAINTENANCE ASSOCIATION, INC., A FLORIDA NOT-FOR-PROFIT CORPORATION, FOR THE TEMPORARY STORAGE OF EXCESS WATER IN TIMES OF HEAVY RAINFALL, THE LAND THEREIN AND THEREUNDER BEING THE PERPETUAL MAINTENANCE RESPONSIBILITY OF SAID ASSOCIATION, ITS SUCCESSORS AND ASSIGNS, WITHOUT RECOURSE TO PALM BEACH COUNTY, PER LAKE CHARLESTON PLAT NO. 3 (PLAT BOOK 62, PAGES 55 THROUGH 68).

0533-031

LAKE CHARLESTON - TRACT "CC" SHEET 4 OF 4

75/75