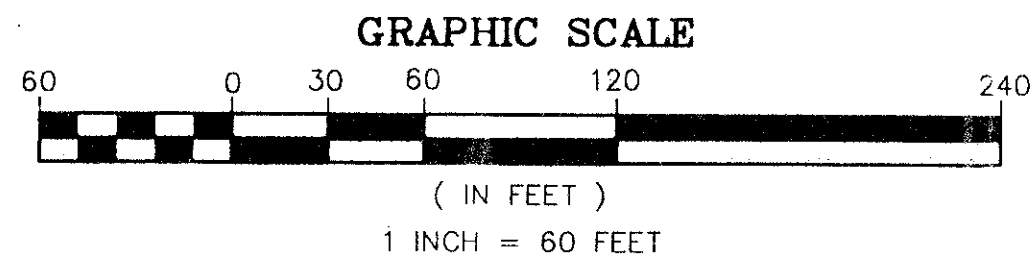


BOCA AZUL - PHASE FOUR AND FIVE

BEING A REPLAT OF TRACTS 56,57,58, AND 59 AND A PORTION OF TRACTS 55 AND 60, BLOCK 72, PALM BEACH FARMS COMPANY
 PLAT NO. 3, AS RECORDED IN PLAT BOOK 2, PAGES 45 THROUGH 54 OF THE
 PUBLIC RECORDS OF PALM BEACH COUNTY, FLORIDA, LYING IN
 SECTION 5, TOWNSHIP 47 SOUTH, RANGE 42 EAST,
 PALM BEACH COUNTY, FLORIDA

203-002

77

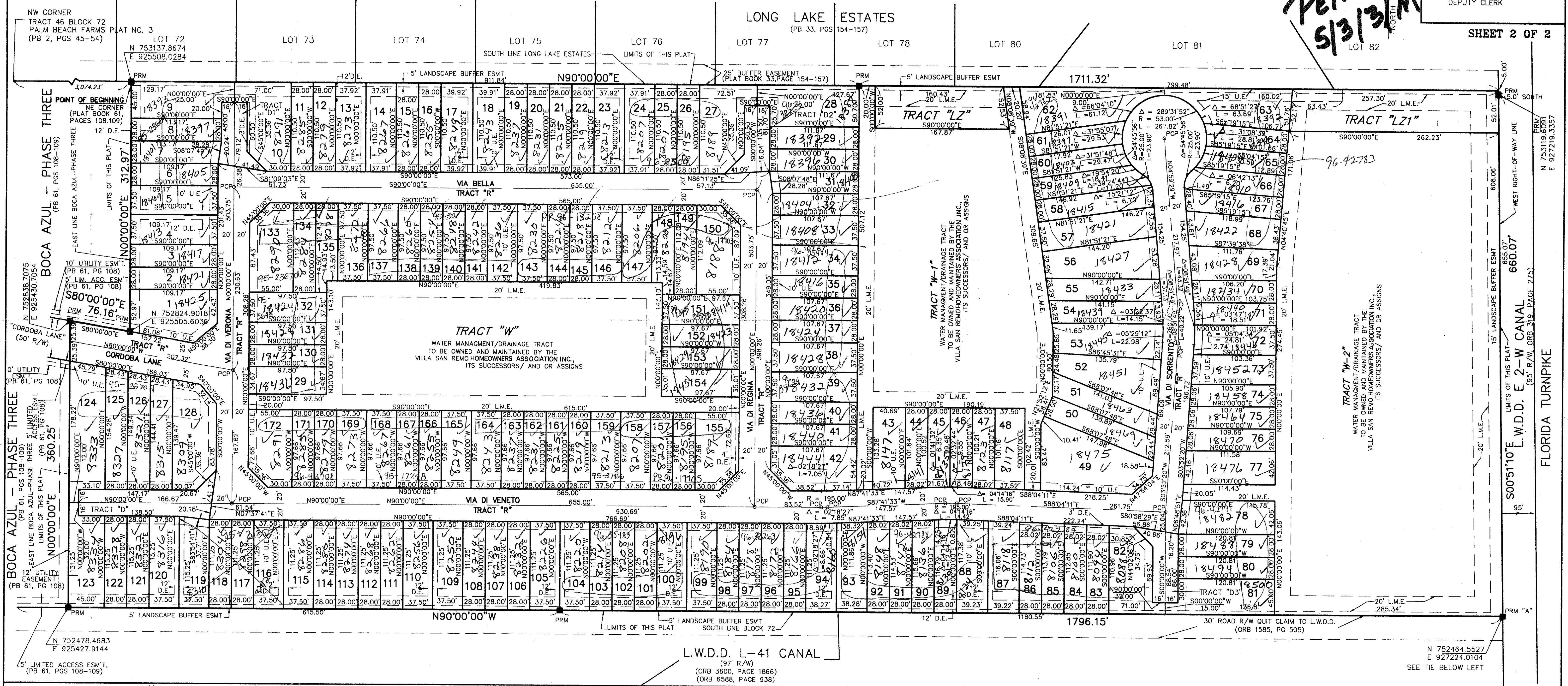


THIS INSTRUMENT PREPARED BY
 DAVID P. LINDLEY
 OF
CAULFIELD and WHEELER, INC.
 ENGINEERS - PLANNERS - SURVEYORS
 7301-A WEST PALMETTO PARK ROAD, SUITE 100A
 BOCA RATON, FLORIDA 33433 - (407)392-1991
 DECEMBER - 1994

STATE OF FLORIDA
 COUNTY OF PALM BEACH
 THIS PLAT WAS FILED FOR
 RECORD AT _____ M.
 THIS _____ DAY OF _____
 A.D. 1995 AND DULY RECORDED
 IN PLAT BOOK _____ ON
 PAGES _____ AND _____
 DOROTHY H. WILKEN
 CLERK CIRCUIT COURT
 BY: _____
 DEPUTY CLERK

*PET. 80-115
 5/3/13/M*

SHEET 2 OF 2



TAZ 768

SUBDIVISION * Boca Azul
 BOOK 75
 FLOOD ZONE B
 QUAD # 53
 SE 80-115
 PUD NAME 5147142

NOTES
 COORDINATES, BEARINGS AND DISTANCES

COORDINATES SHOWN ARE GRID
 DATUM = NAD 83 1990 ADJUSTMENT
 ZONE = FLORIDA EAST
 LINEAR UNIT = US SURVEY FEET
 COORDINATE SYSTEM 1983 STATE PLANE
 TRANSVERSE MERCATOR PROJECTION

ALL DISTANCES ARE GROUND
 SCALE FACTOR = 1.0000249
 GROUND DISTANCE X SCALE FACTOR = GRID DISTANCE

N90°00'00"W (PLAT BEARING) (CLOCKWISE)
 -00°26'38" = BEARING ROTATION (PLAT TO GRID)

N89°33'22"W (GRID BEARING) (PLAT TO GRID)
 SOUTH LINE BOCA AZUL PHASE FOUR AND FIVE (THIS PLAT)

WHISPER WALK A P.U.D.
 (PB 43, PGS 139-191)

PUD TABULAR DATA

TOTAL AREA THIS PLAT	26.61 ACRES
AREA OF RESIDENTIAL	15.18 ACRES
AREA OF PRIVATE ROADWAY (TRACTS R,D1,D2,D3)	3.31 ACRES
AREA OF WATER MANAGEMENT (TRACTS W,W1,W2)	7.61 ACRES
AREA OF TRACTS LZ AND LZ1	0.51 ACRES
TOTAL NUMBER OF UNITS PROPOSED THIS PLAT	172
DENSITY PROPOSED THIS PLAT	6.54 UNITS/ACRE
LAND USE -	TOWNHOUSE/CONDOMINIUM

*0203-002
 75/77*

Boca Azul-Phase 4+5

PLAT TIE
 401.20'(MEASURED GROUND DISTANCE)
 588°29'20"W (GRID)
 N 752475.13
 E 927625.08

N 752464.5527
 E 927224.0104
 SEE TIE BELOW LEFT