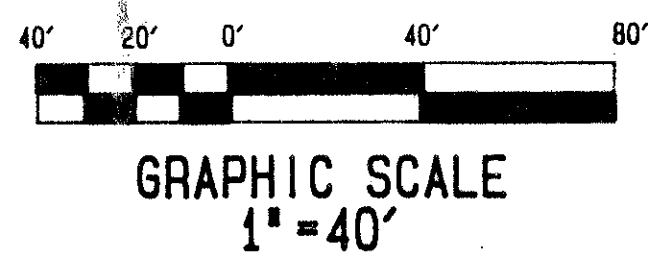


# EAGLE POINT

0641-001



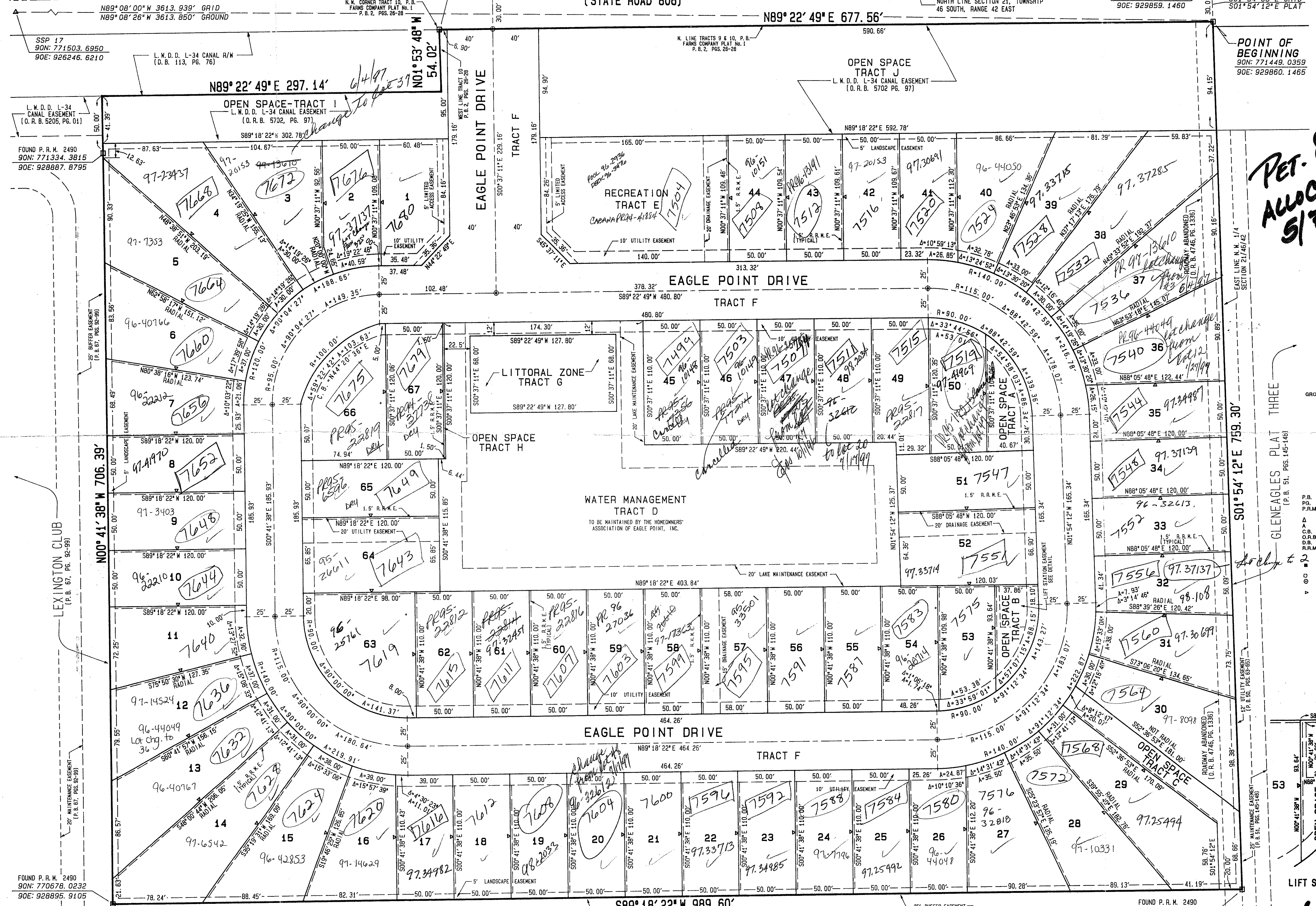
NOT PLATTED

A REPLAT OF TRACTS 9 AND 10, AND PORTIONS OF TRACTS 11, 22, 23, AND 24, PALM BEACH FARMS COMPANY PLAT No. 1, RECORDED IN PLAT BOOK 2, AT PAGES 26 - 28, INCLUSIVE, PUBLIC RECORDS OF PALM BEACH COUNTY, FLORIDA; LYING IN SECTION 21, TOWNSHIP 46 SOUTH, RANGE 42 EAST, PALM BEACH COUNTY, FLORIDA.

MARCH 1995  
SHEET 2 OF 2

POINT OF COMMENCEMENT  
N.E. CORNER OF THE N.W. 1/4 SECTION 21,  
TOWNSHIP 46 SOUTH, RANGE 42 EAST,  
FOUND PALM BEACH COUNTY DISK  
IN CONCRETE.

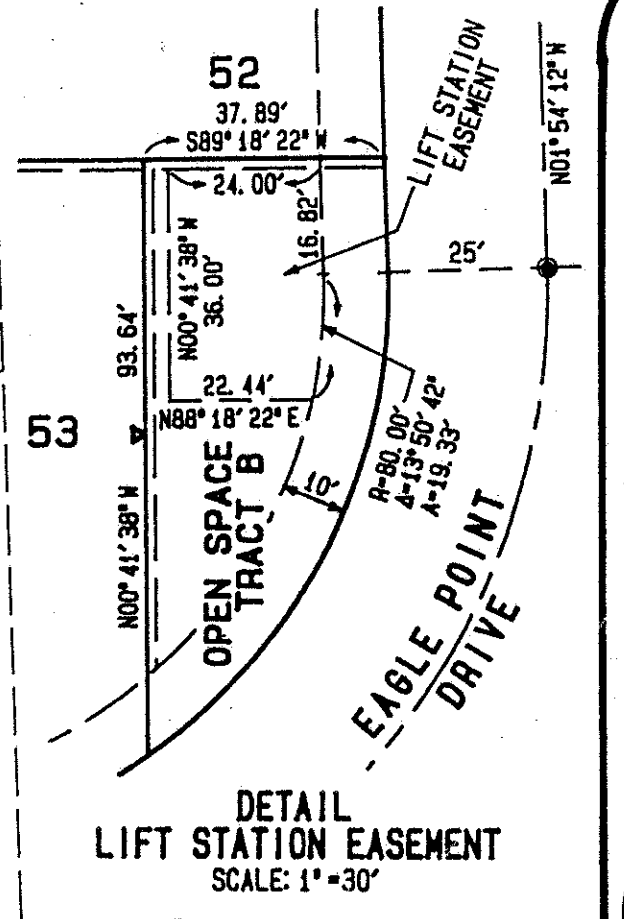
# 79



PET. 86-7  
ALLOC. #0001  
5/2/3/4

NOTES:  
COORDINATES, BEARINGS, & DISTANCES  
COORDINATES SHOWN ARE GRID  
DATUM - NAD 83 1985 ADJUSTMENT  
ZONE - FLORIDA EAST  
LINEAR UNIT - US SURVEY FEET  
COORDINATE SYSTEM - 1983 STATE PLANE  
TRANSVERSE MERCATOR PROJECTION  
ALL DISTANCES ARE GROUND  
SCALE FACTOR = 1.00002454  
GROUND DISTANCE x SCALE FACTOR = GRID DISTANCE  
BEARING ROTATION PLAT TO GRID  
0° 00' 28" COUNTER CLOCKWISE

LEGEND:  
P.B. PLAT BOOK  
P.P. PERMANENT REFERENCE MONUMENT  
P.R.M. PERMANENT REFERENCE MONUMENT  
D.A. DELTA ANGLE  
A.L. ARC LENGTH  
C.B. CHORD BEARING  
O.R.B. OFFICIAL RECORD BOOK  
D.B. DEED BOOK  
R.O. ROOF OVERHANG AND RECIPROCAL MAINTENANCE EASEMENTS  
D.E. DENOTES SET P.R.M. UNLESS OTHERWISE NOTED  
D.F. DENOTES FOUND P.R.M. AS NOTED  
D.P. DENOTES SET PERMANENT CONTROL POINT (P.C.P.)  
D.Z. DENOTES ZERO LOT LINE ON THE SIDE OF THE LINE SHOWN



SUBDIVISION \* Eagle Point  
BOOK 75 PAGE 79  
FLOOD MAP # 215A  
QUAD # 52 ZONING KTY  
SE 26-76  
PUD NAME 2146/42

TAZ 468

**Dailey-Fotopay, Inc.**  
land surveyors, planners, engineers  
5200 10th Avenue North, Suite 2 - Lake Worth, Florida 33463-2022  
Phone 407/944-9797

0641-001 EAGLE POINT 75/79