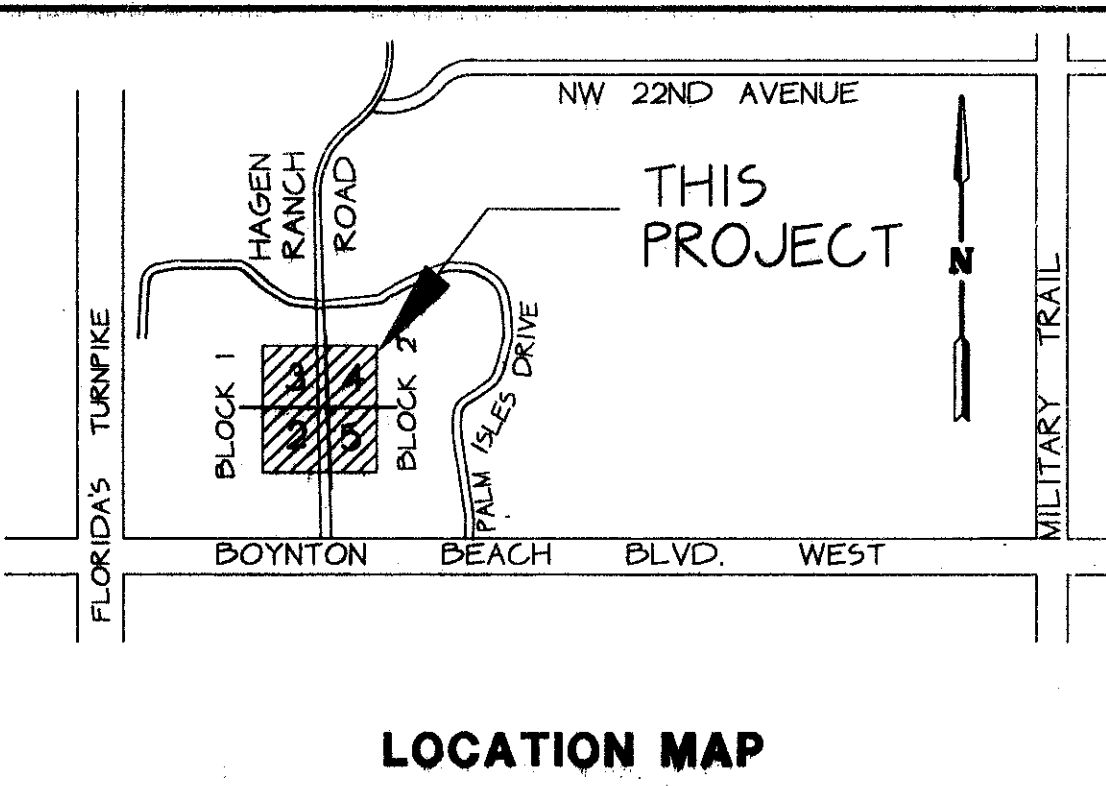


PALM ISLES WEST

A REPLAT OF TRACTS 55 THROUGH 58, 71 THROUGH 74 AND 87 THROUGH 90, BLOCK 49 OF PALM BEACH FARMS COMPANY PLAT NO. 3, AS RECORDED IN PLAT BOOK 2, PAGES 45 THROUGH 54 INCLUSIVE OF THE PALM BEACH COUNTY RECORDS ALL IN SECTION 21, TOWNSHIP 45 SOUTH, RANGE 42 EAST

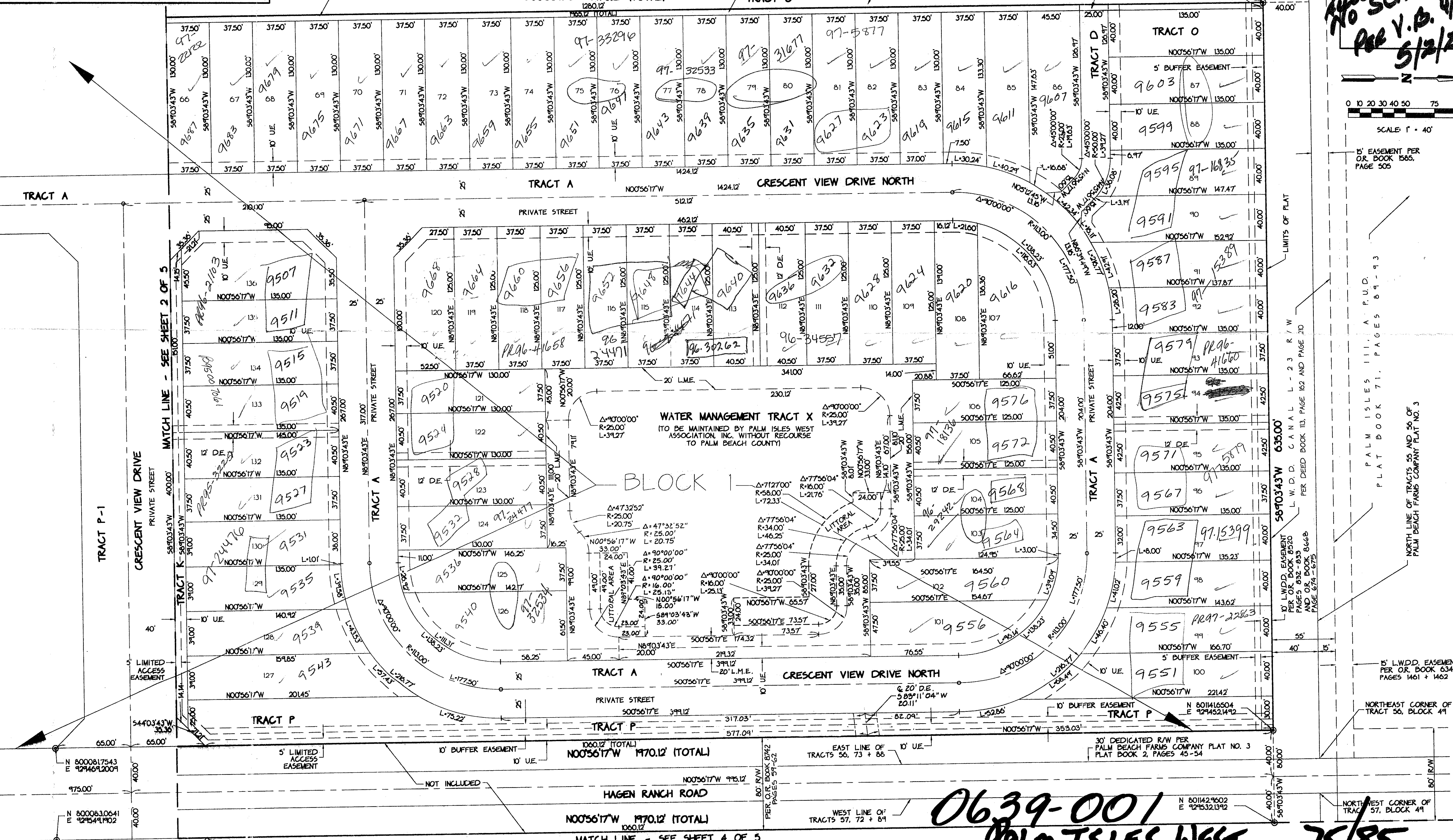
THIS INSTRUMENT PREPARED BY JAMES E. PARK, P.L.S.
 WILLIAMS, HATFIELD & STONER, INC. - ENGINEERS PLANNERS SURVEYORS
 1901 SOUTH CONGRESS AVENUE, SUITE 150, BOYNTON BEACH, FLORIDA 33426

SHEET 3 OF 5



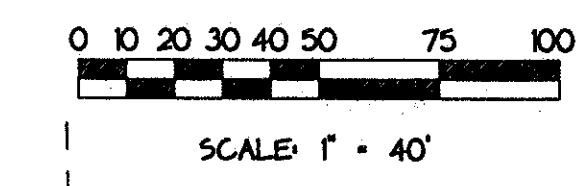
PALM BEACH FARMS COMPANY
 PLAT NO. 3
 PLAT BOOK 2, PAGES 45-54

*PET. 94-18
 4400+000.00
 No SCHOOLS
 See V.B. 4/1/19
 5/2/2/1*



SUBDIVISION * Palm Isles West
 BOOK 75 PAGE 85
 FLOOD MAP # 185A
 QUAD # 50 ZONING RTU
 SE ZIP CODE 33437
 PUD NAME SAVS/42

TAZ 443



5' EASEMENT PER OR. BOOK 1565, PAGE 506

PALM ISLES III, A.P.D.
 PLAT BOOK 71, PAGES 89-93

15' L.W.D.D. EASEMENT PER OR. BOOK 8520 PAGES 832-833 AND OR. BOOK 8668 PAGE 674-675

NORTH LINE OF TRACTS 55 AND 56 OF PALM BEACH FARMS COMPANY PLAT NO. 3

0639-001
 PALM ISLES WEST
 75/85