

0638-001

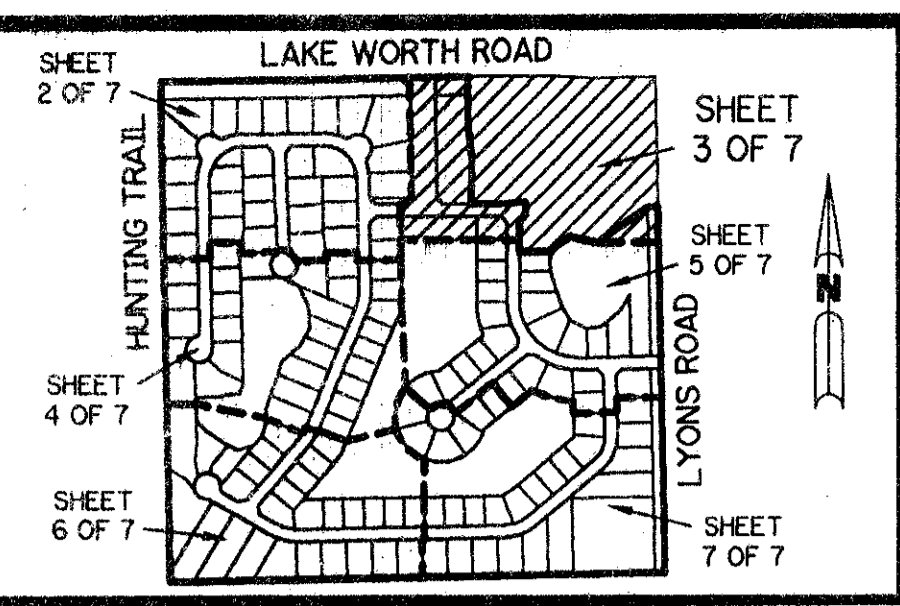
102

A PLANNED UNIT DEVELOPMENT

REGENCY LAKE ESTATES

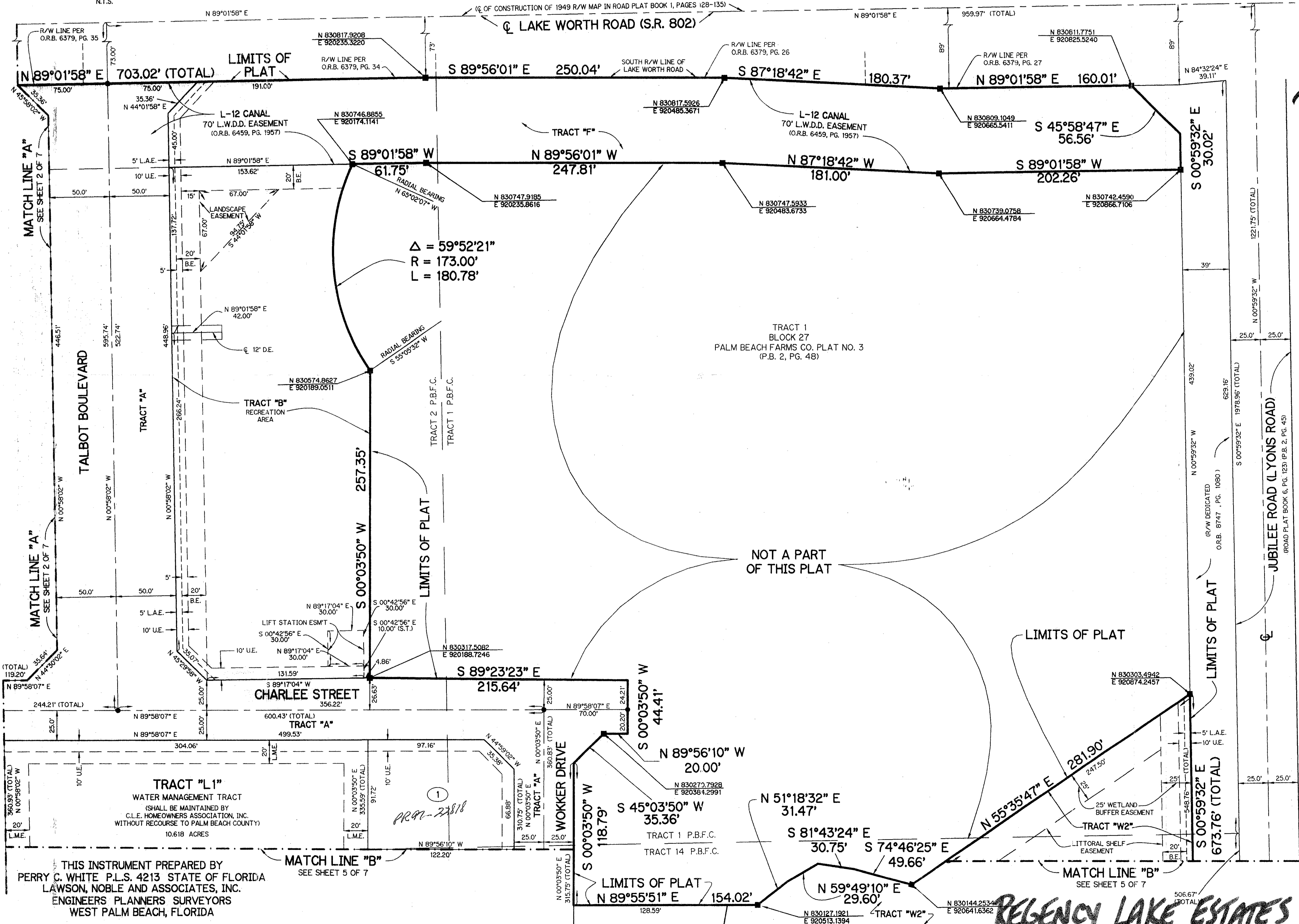
BEING A REPLAT OF A PORTION OF TRACTS 1, 2, 3, 12, 13, 14, 15, 16, AND 17 AND ASSOCIATED ABANDONED RIGHT-OF-WAY ALL IN BLOCK 27 ACCORDING TO THE PLAT OF PALM BEACH FARMS CO. PLAT NO. 3, AS RECORDED IN PLAT BOOK 2, PAGE 45, PUBLIC RECORDS OF PALM BEACH COUNTY, FLORIDA. LYING IN SECTION 30, TOWNSHIP 44 SOUTH, RANGE 42 EAST.

SHEET 3 OF 7 SEPTEMBER, 1994

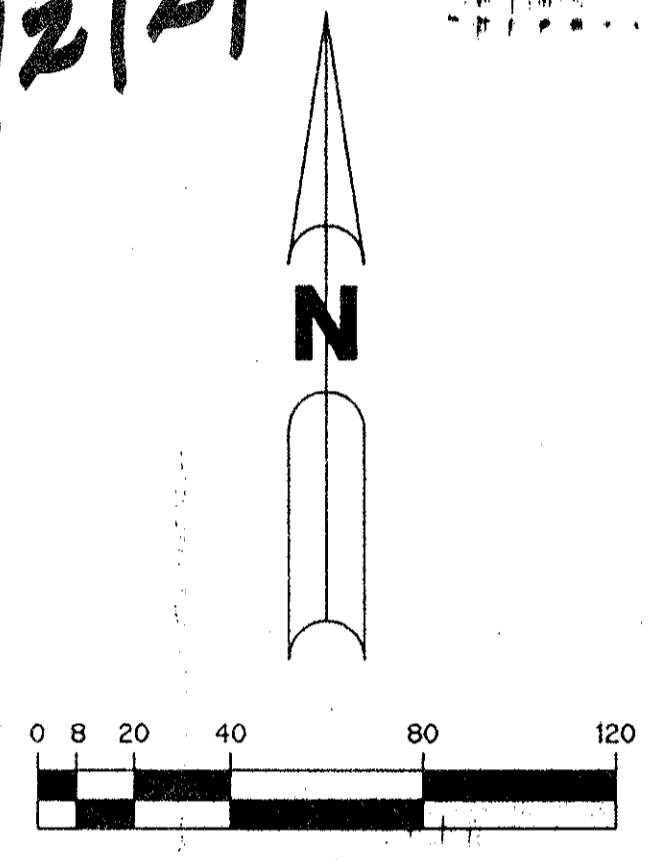


PALM BEACH FARMS CO. PLAT No. 3

KEY MAP N.T.S.



PET. 94-4
CURRENT
S/2/2/E



OVERALL
KENT PUD

- LEGEND:**
- - PERMANENT REFERENCE MONUMENT, PLS #4213
 - - PERMANENT CONTROL POINT, PLS #4213
 - Δ - DELTA ANGLE
 - A - ARC LENGTH
 - B.E. - BUFFER EASEMENT
 - D.E. - DRAINAGE EASEMENT
 - F.P.L. - FLORIDA POWER & LIGHT COMPANY
 - L.M.A.E. - LAKE MAINTENANCE ACCESS EASEMENT
 - L.M.E. - LAKE MAINTENANCE EASEMENT
 - L.W.D.D. - LAKE WORTH DRAINAGE DISTRICT
 - N.R. - NOT RADIAL
 - N.T.S. - NOT TO SCALE
 - O.R.B. - OFFICIAL RECORD BOOK
 - P.B. - PLAT BOOK
 - P.B.F.C. - BLOCK 27, PALM BEACH FARMS CO. PLAT NO. 3 (PLAT BOOK 2, PAGE 45)
 - P.G.S. - PAGES
 - P.L.S. - PROFESSIONAL LAND SURVEYOR
 - R - RADIUS
 - R/W - RIGHT-OF-WAY
 - U.E. - UTILITY EASEMENT
 - S.T. - SURVEY TIE LINE

PALM BEACH FARMS CO. PLAT No. 3

0638-001

75/102

REGENCY LAKE ESTATES

SHEET 3 OF 7

THIS INSTRUMENT PREPARED BY
PERRY C. WHITE P.L.S. 4213 STATE OF FLORIDA
LAWSON, NOBLE AND ASSOCIATES, INC.
ENGINEERS PLANNERS SURVEYORS
WEST PALM BEACH, FLORIDA

SUBDIVISION - Regency Lake Estates
BOOK 75 PAGE 102
FLOOD ZONE D FLOOD MAP #170A
QUAD # 48 ZONING PUD
SE 94-04
PUD NAME 30/44/42

TAZ 738

PR 91-22818