

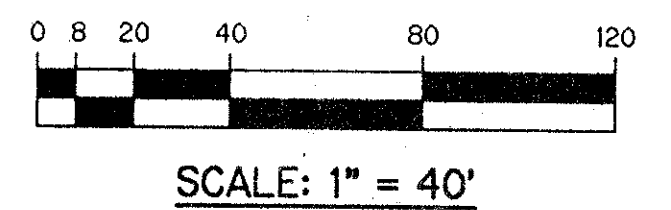
# REGENCY LAKE ESTATES

BEING A REPLAT OF A PORTION OF TRACTS 1, 2, 3, 12, 13, 14, 15, 16, AND 17 AND ASSOCIATED ABANDONED RIGHT-OF-WAY ALL IN BLOCK 27 ACCORDING TO THE PLAT OF PALM BEACH FARMS CO. PLAT NO. 3, AS RECORDED IN PLAT BOOK 2, PAGE 45, PUBLIC RECORDS OF PALM BEACH COUNTY, FLORIDA, LYING IN SECTION 30, TOWNSHIP 44 SOUTH, RANGE 42 EAST.

# 103

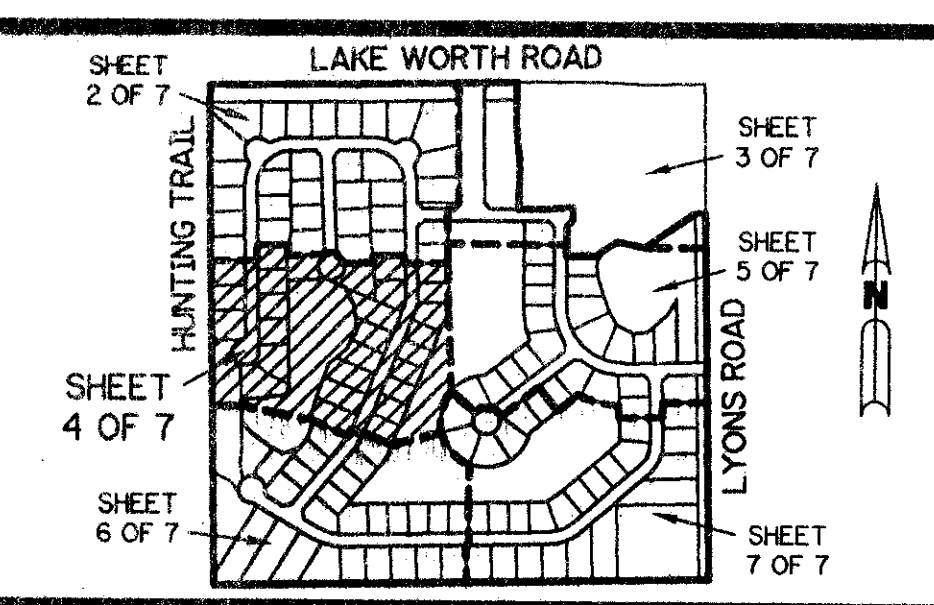
SHEET 4 OF 7 SEPTEMBER, 1994

PET. 94-4  
CURRENT  
5/2/2/I



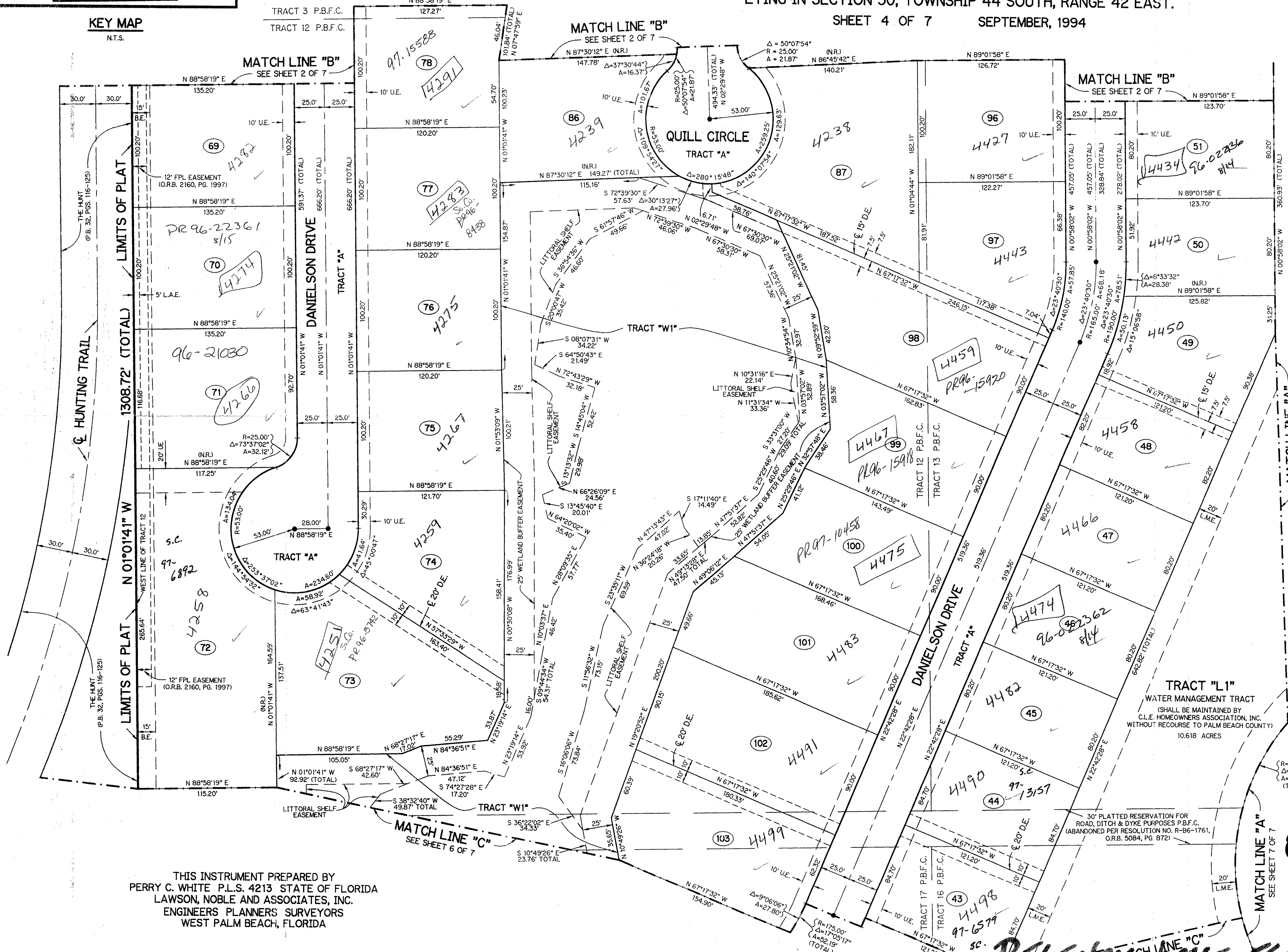
OVERALL  
KENT PUD

- LEGEND:**
- - PERMANENT REFERENCE MONUMENT, PLS #4213
  - - PERMANENT CONTROL POINT, PLS #4213
  - Δ - DELTA ANGLE
  - A - ARC LENGTH
  - B.E. - BUFFER EASEMENT
  - D.E. - DRAINAGE EASEMENT
  - F.P.L. - FLORIDA POWER & LIGHT COMPANY
  - L.M.A.E. - LAKE MAINTENANCE ACCESS EASEMENT
  - L.M.E. - LAKE MAINTENANCE EASEMENT
  - L.W.D.D. - LAKE WORTH DRAINAGE DISTRICT
  - NR. - NOT RADIAL
  - N.T.S. - NOT TO SCALE
  - O.R.B. - OFFICIAL RECORD BOOK
  - P.B. - PLAT BOOK
  - P.B.F.C. - BLOCK 27, PALM BEACH FARMS CO. PLAT NO. 3 (PLAT BOOK 2, PAGE 45)
  - P.G.S. - PAGES
  - P.L.S. - PROFESSIONAL LAND SURVEYOR
  - R - RADIUS
  - R/W - RIGHT-OF-WAY
  - U.E. - UTILITY EASEMENT



KEY MAP  
N.T.S.

TRACT 3 P.B.F.C.  
TRACT 12 P.B.F.C.



SUBDIVISION - Regency Lake Estates  
BOOK 75  
PAGE 103  
FLOOD ZONE B  
QUAD - 48  
SE 94-04  
PUD NAME  
ZIP CODE 33467  
30/44/42

THIS INSTRUMENT PREPARED BY  
PERRY C. WHITE P.L.S. 4213 STATE OF FLORIDA  
LAWSON, NOBLE AND ASSOCIATES, INC.  
ENGINEERS PLANNERS SURVEYORS  
WEST PALM BEACH, FLORIDA

## REGENCY LAKE ESTATES

0638-001  
75/103