

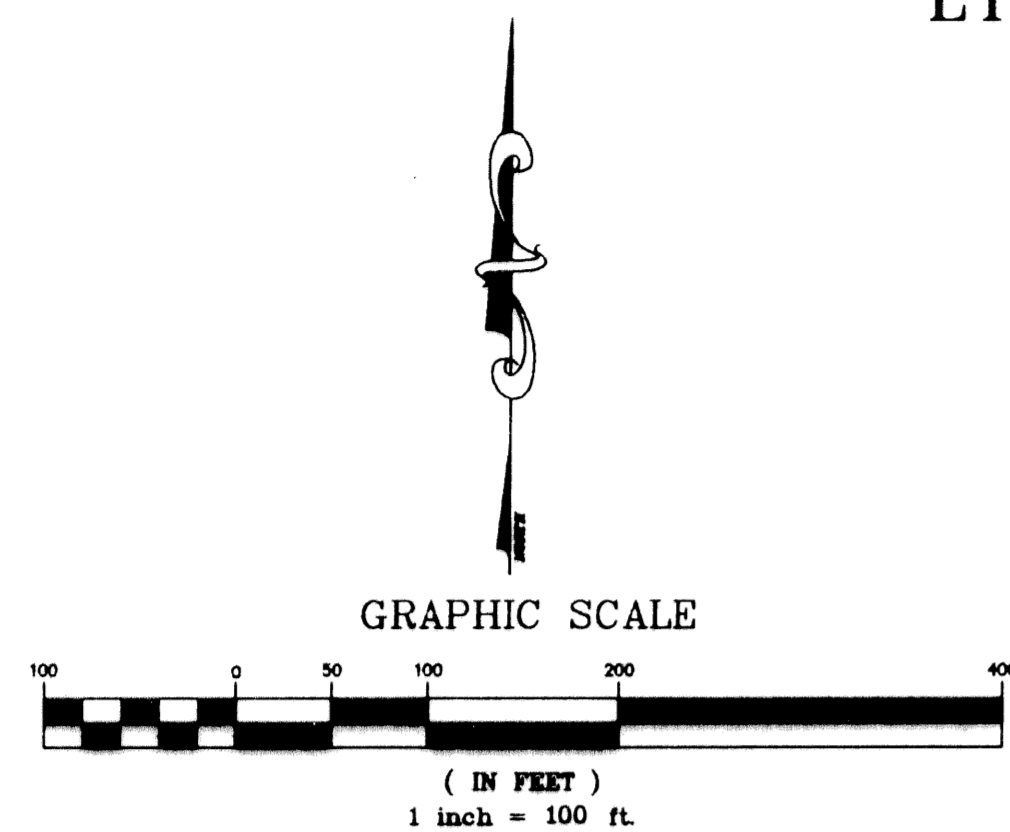
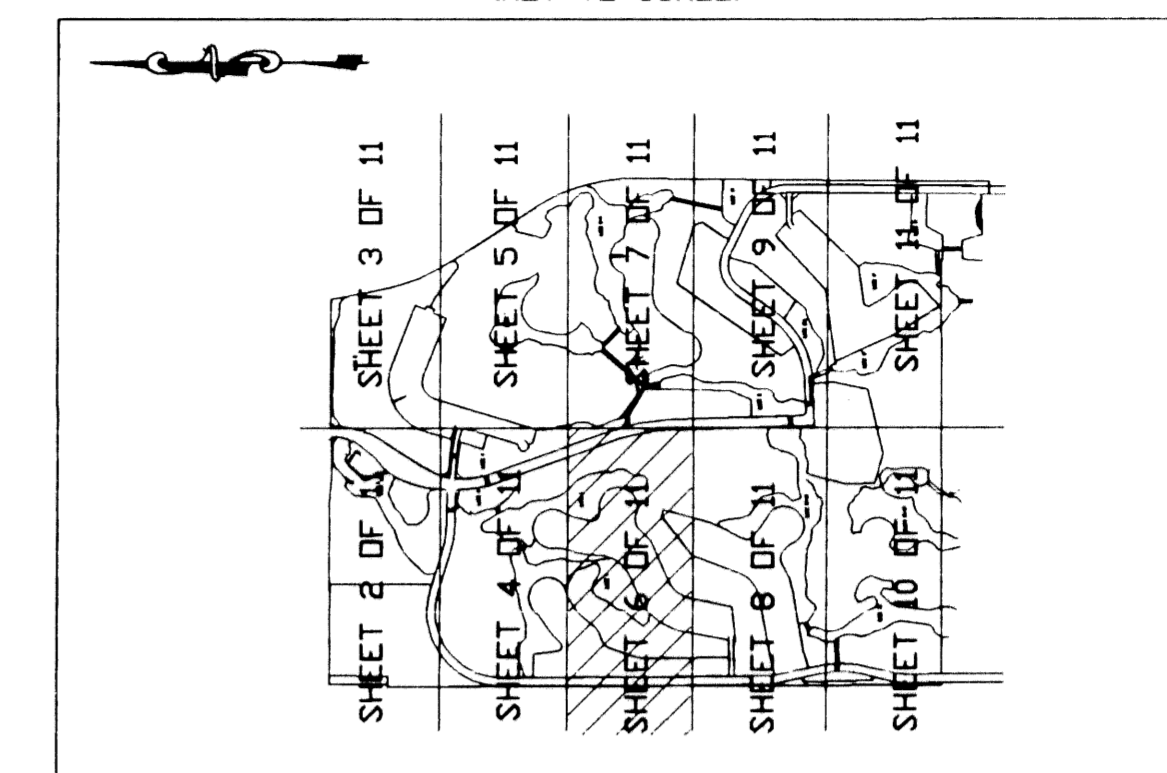


# A PLAT OF IBIS GOLF AND COUNTRY CLUB PLAT NO. 14

A PLANNED UNIT DEVELOPMENT  
LYING IN SECTIONS 13, 24 AND 25, TOWNSHIP 42 SOUTH, RANGE 41 EAST  
CITY OF WEST PALM BEACH, PALM BEACH COUNTY, FLORIDA

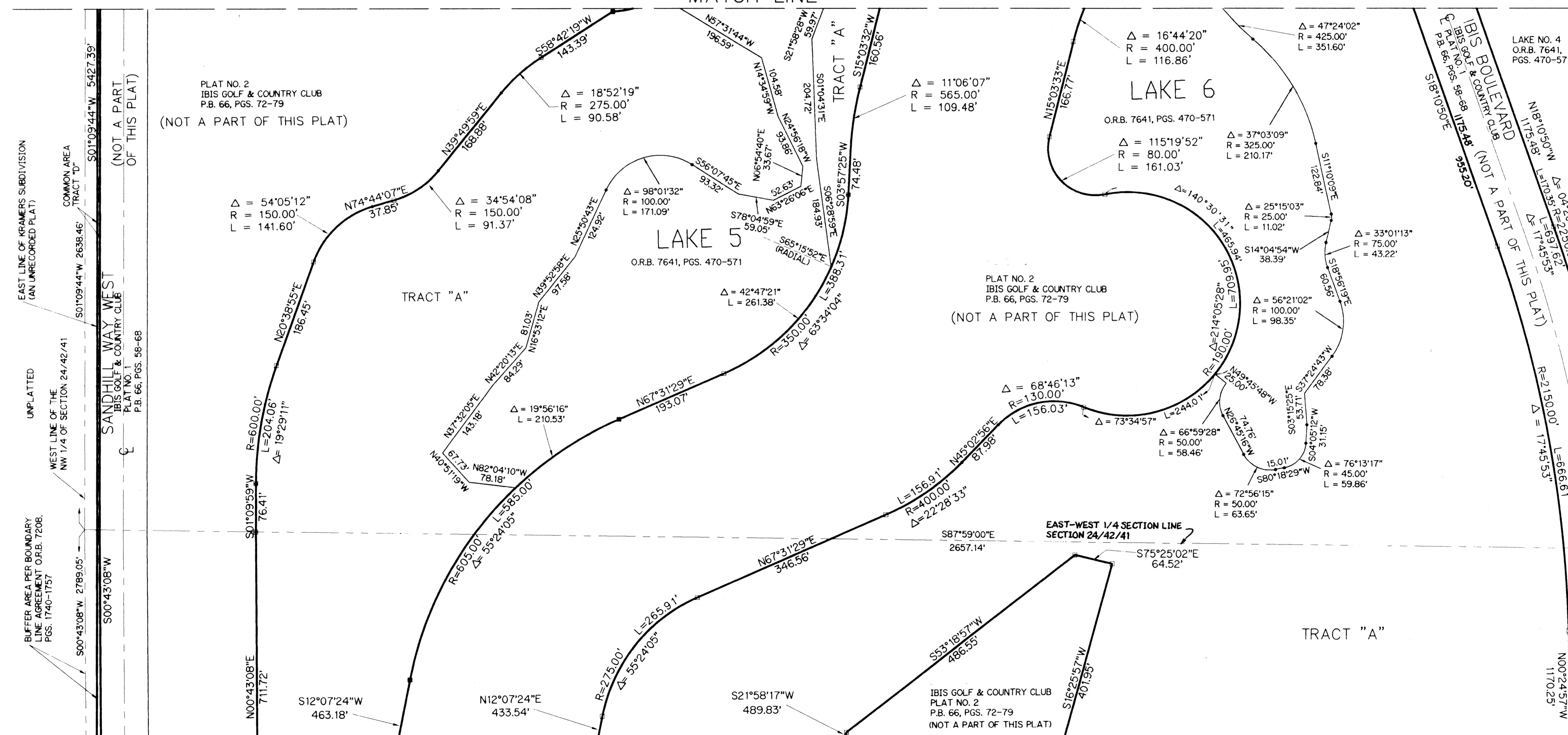
# 112

KEY MAP  
(NOT TO SCALE)



- LEGEND:
- O.R.B. - OFFICIAL RECORD BOOK
  - P.B. - PLAT BOOK
  - PGS. - PAGES
  - W.M.E. - WATER MANAGEMENT EASEMENT
  - - PERMANENT REFERENCE MONUMENT FOUND NO. LB 959
  - - PERMANENT REFERENCE MONUMENT SET NO. LS 4382
  - ⊕ - SECTION CORNER
  - ⊕ - ONE-QUARTER SECTION CORNER

(SEE SHEET 4 OF 11)  
MATCH LINE



MATCH LINE  
(SEE SHEET 8 OF 11)

MATCH LINE  
(SEE SHEET 7 OF 11)

SUBDIVISION # Ibis Golf And Country  
BOOK 75  
PAGE 112  
FLOOD ZONE  
QUAD #  
SE  
PUD NAME C/West Palm Beach  
13, 24, 25, 42, 41



LINDAHL, BROWNING, FERRARI, & HELLSTROM, INC.  
CONSULTING ENGINEERS, PLANNERS & SURVEYORS

210 JUPITER LAKES BLVD. SUITE 201 JUPITER, FL 33469 407-746-9240  
2400 SE MONTEREY ROAD SUITE 300 STUART, FL 34996 407-286-3882  
2222 COLONIAL ROAD SUITE 702 WEST PALM BEACH, FL 33409 407-461-2450  
2600 PALM BEACH LAKES BLVD. SUITE 702 WEST PALM BEACH, FL 33409 407-684-3375

6 11  
Sheet of