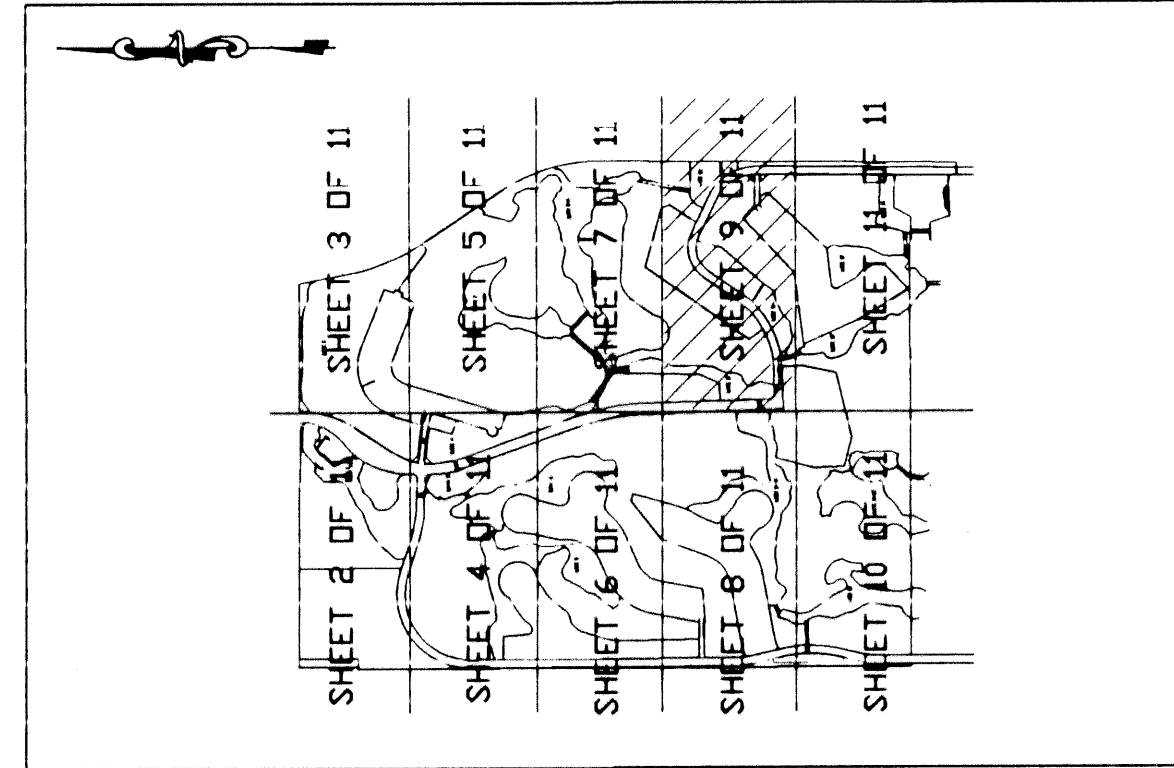


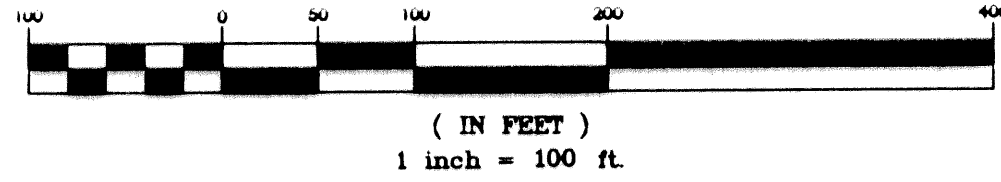
IBIS GOLF AND COUNTRY CLUB PLAT NO. 14

A PLANNED UNIT DEVELOPMENT
LYING IN SECTIONS 13, 24 AND 25, TOWNSHIP 42 SOUTH, RANGE 41 EAST
CITY OF WEST PALM BEACH, PALM BEACH COUNTY, FLORIDA

KEY MAP
(NOT TO SCALE)



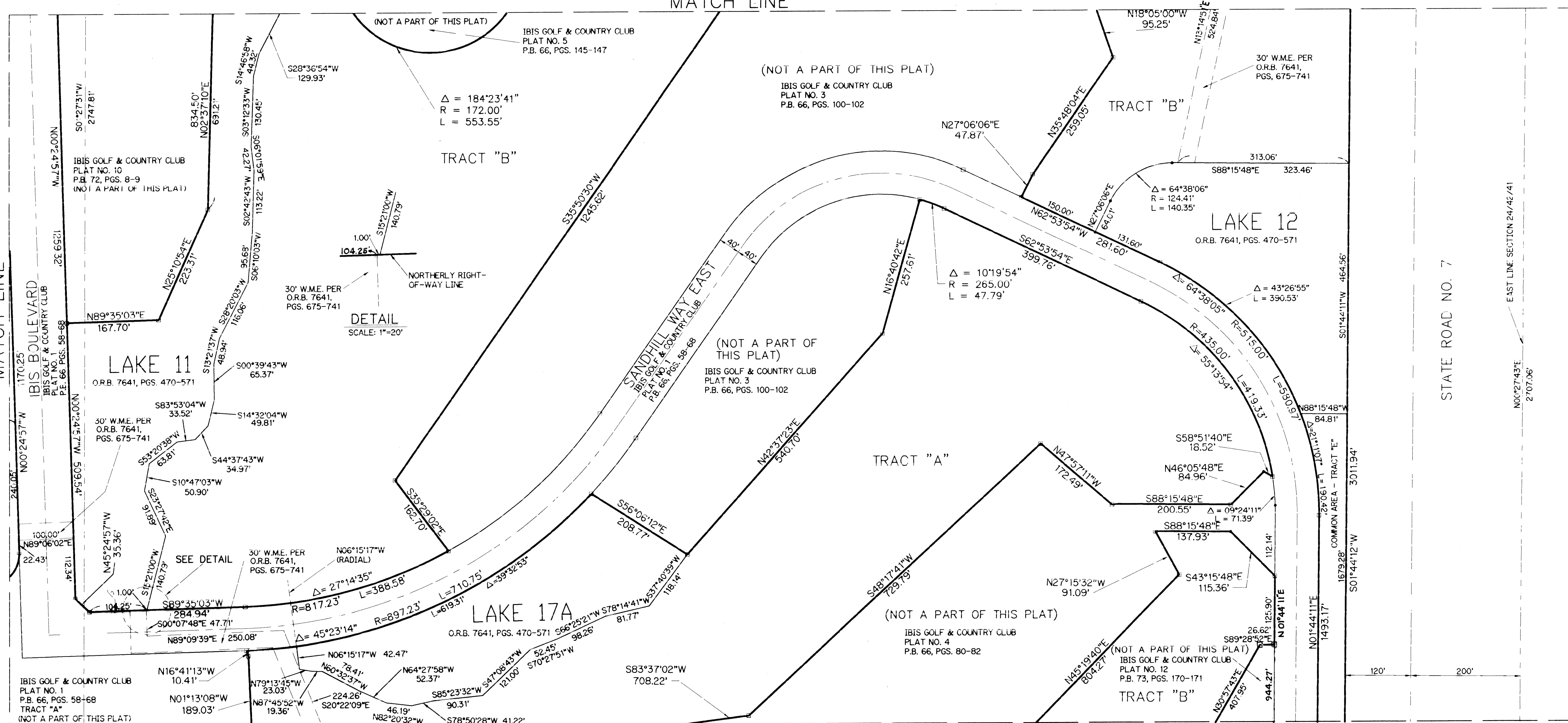
GRAPHIC SCALE



- LEGEND:
- O.R.B. - OFFICIAL RECORD BOOK
 - P.B. - PLAT BOOK
 - PGS. - PAGES
 - W.M.E. - WATER MANAGEMENT EASEMENT
 - - PERMANENT REFERENCE MONUMENT FOUND NO. LB 959
 - - PERMANENT REFERENCE MONUMENT SET NO. LS 4382
 - ⊕ - SECTION CORNER
 - ⊕ - ONE-QUARTER SECTION CORNER

(SEE SHEET 7 OF 11)
MATCH LINE

(SEE SHEET 8 OF 11)
MATCH LINE



MATCH LINE
(SEE SHEET 11 OF 11)

SUBDIVISION - Ibis Golf And Country Club Plat 14
 BOOK - 75
 FLOOD MAP - PAGE 115
 ZONING -
 QUAD -
 SE -
 ZIP CODE -
 PUD NAME - C/West Palm Beach 13, 24, 25/42/41

lfp LINDAHL, BROWNING, FERRARI, & HELLSTROM, INC.
 CONSULTING ENGINEERS, PLANNERS & SURVEYORS
 210 JUPITER LAKES BLVD. 2400 S.E. MONTEREY ROAD 2222 COLONIAL ROAD 2000 PALM BEACH LAKES BLVD.
 SUITE 3000 SUITE 100 SUITE 200
 JUPITER, FL 33468 STUART, FL 34996 FT. PIERCE, FL 34950 WEST PALM BEACH, FL 33409
 407-746-9248 407-286-3883 407-461-2450