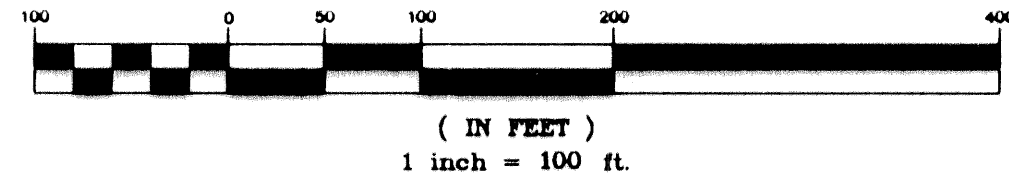


# IBIS GOLF AND COUNTRY CLUB PLAT NO. 14

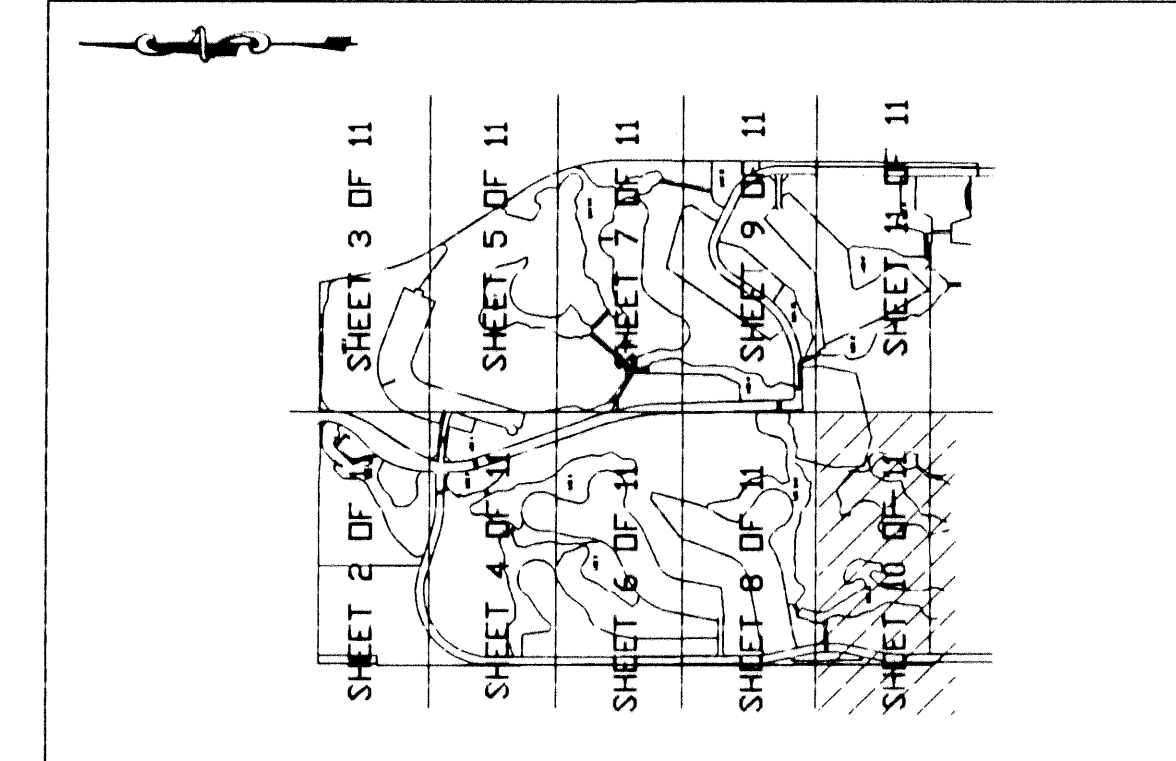
A PLANNED UNIT DEVELOPMENT  
LYING IN SECTIONS 13, 24 AND 25, TOWNSHIP 42 SOUTH, RANGE 41 EAST  
CITY OF WEST PALM BEACH, PALM BEACH COUNTY, FLORIDA

GRAPHIC SCALE

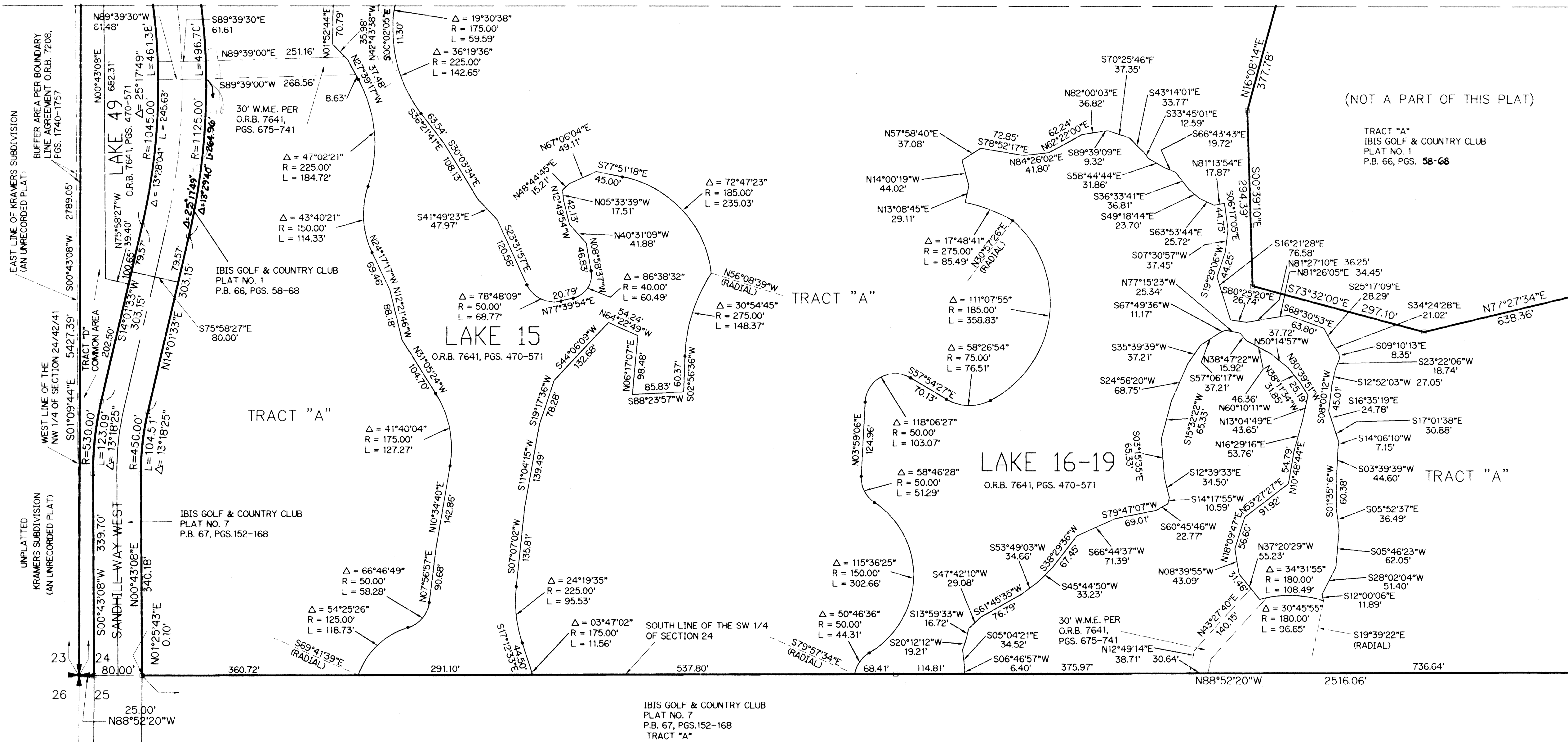


- LEGEND:
- O.R.B. - OFFICIAL RECORD BOOK
  - P.B. - PLAT BOOK
  - PGS. - PAGES
  - W.M.E. - WATER MANAGEMENT EASEMENT
  - - PERMANENT REFERENCE MONUMENT FOUND NO. LB 959
  - - PERMANENT REFERENCE MONUMENT SET NO. LS 4382
  - ⊕ - SECTION CORNER
  - ⊕ - ONE-QUARTER SECTION CORNER

KEY MAP  
(NOT TO SCALE)



(SEE SHEET 8 OF 11)  
MATCH LINE



(NOT A PART OF THIS PLAT)

TRACT "A"  
IBIS GOLF & COUNTRY CLUB  
PLAT NO. 1  
P.B. 66, PGS. 58-66

TRACT "A"

LAKE 16-19  
O.R.B. 7641, PGS. 470-571

TRACT "A"

MATCH LINE  
(SEE SHEET 11 OF 11)

SUBDIVISION #	Ibis Golf And Country Club Plat 14
BOOK	75
FLOOD ZONE	FACE 116
QUAD #	FLOOD MAP #
SE	ZONING
PUD NAME	ZIP CODE
	13, 24, 25, 42, 41



**LINDAHL, BROWNING, FERRARI, & HELLSTROM, INC.**  
CONSULTING ENGINEERS, PLANNERS & SURVEYORS

210 JUPITER LAKES BLVD. SUITE 200 JUPITER, FL 33458  
2400 S.E. MONTEREY ROAD SUITE 200 WEST PALM BEACH, FL 33409  
2222 COLONIAL ROAD SUITE 200 WEST PALM BEACH, FL 33409  
2000 PALM BEACH LAKES BLVD. SUITE 200 WEST PALM BEACH, FL 33409